

PC-/Rack-Architect
Version 4.3
System-Architect
Version 1.0

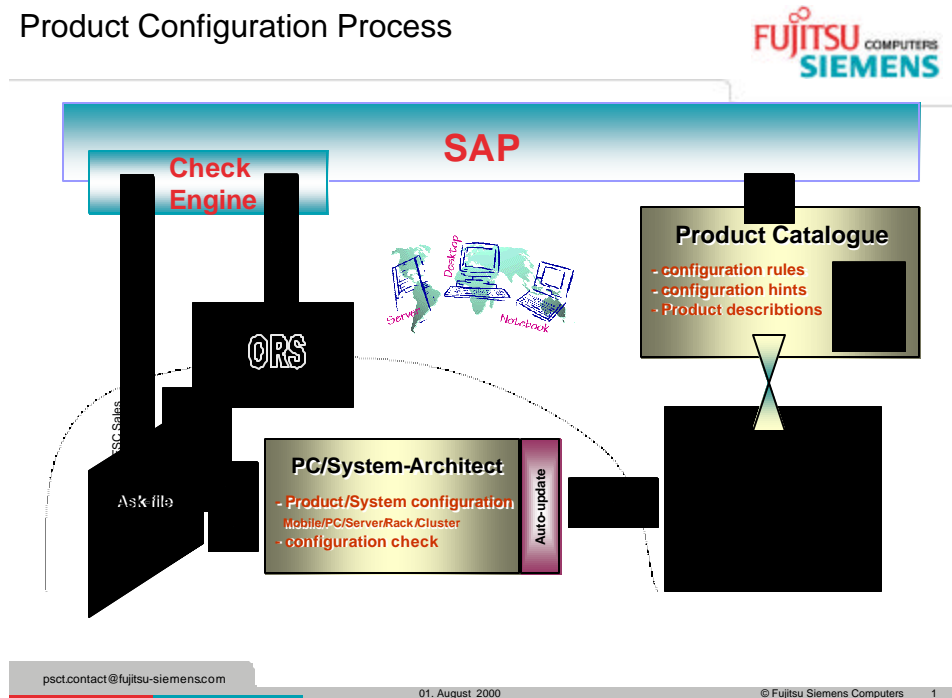


Installation and Configuration

The configuration tools PC- and System-Architect are an important part of the product configuration process chain of Fujitsu Siemens Computers.

An essential factor to an orderable configuration is the latest product configuration database synchronous to the Fujitsu Siemens Computers order system. In order to enable an easy handling concerning the actualisation of the databases, we integrated an automatic update in the configuration tools.

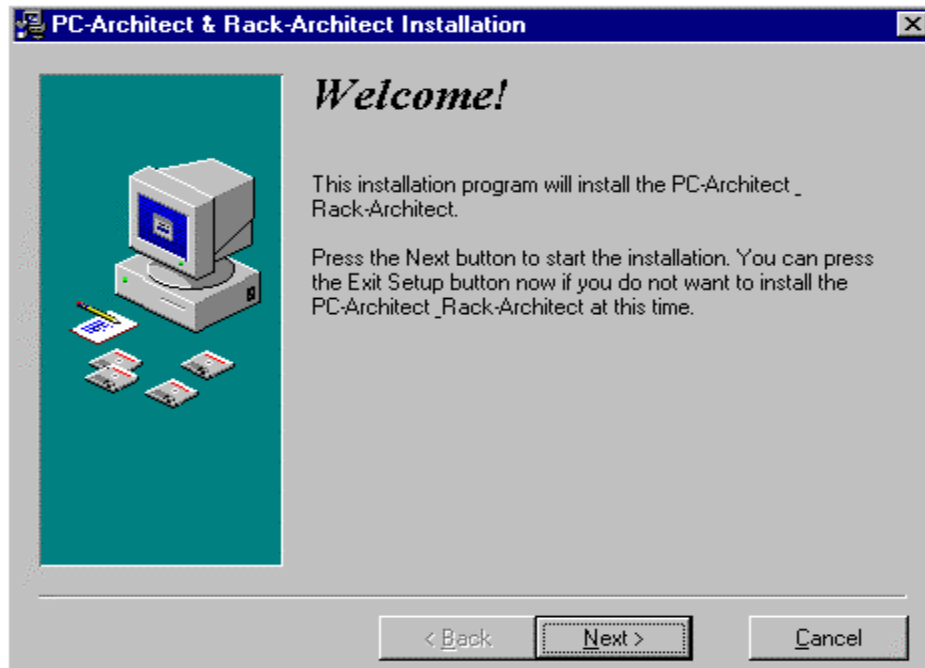
Product Configuration Process



The installation and settings of the PC-/Rack- and System-Architect are similar and are described in the following.

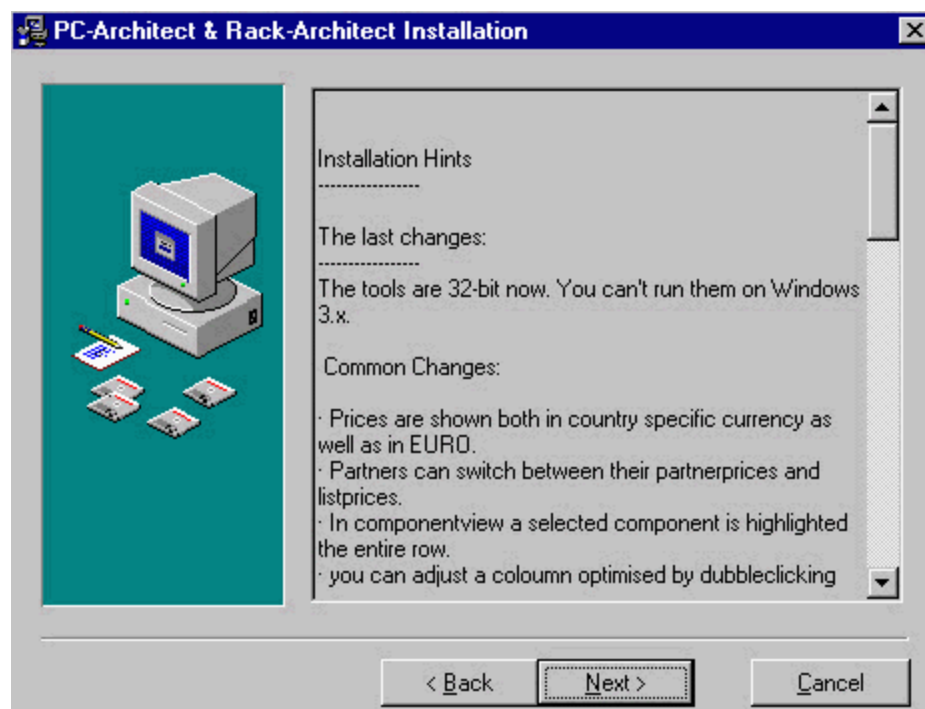
Product Configuration Process

The installation will run automatically after starting the file setpca_e.exe for PC-/Rack-Architect respectively setsysa_e.exe for System-Architect.

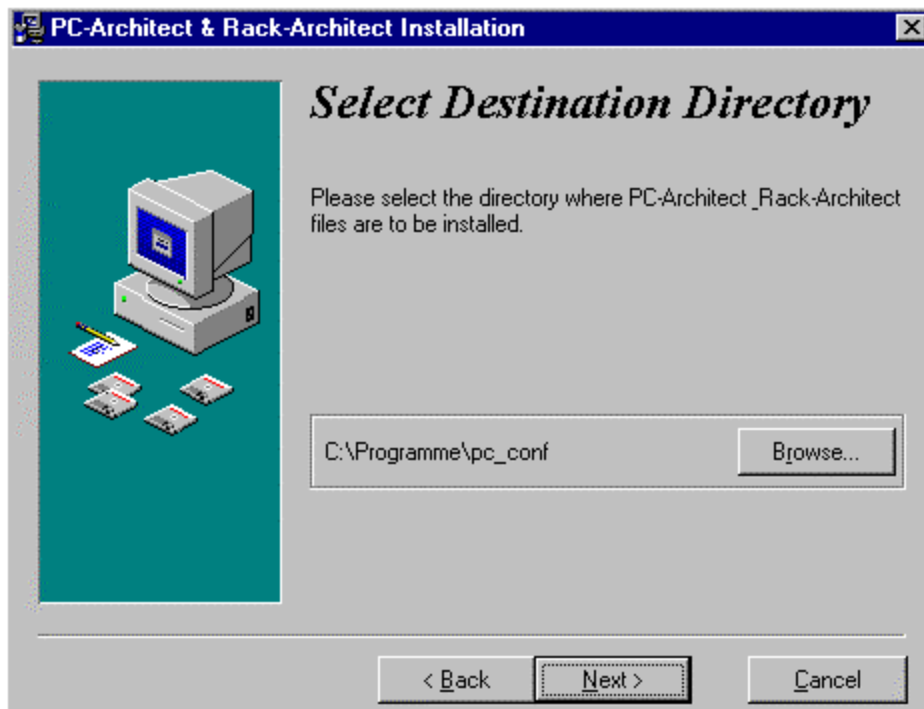


Please notice the following installation hints:

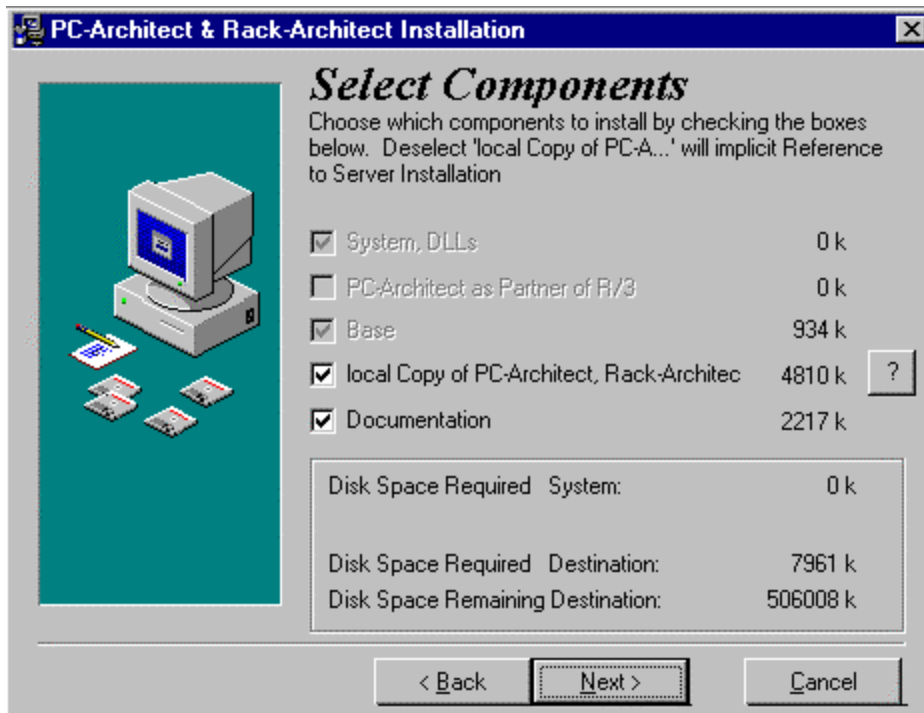
You can get there additional information and news that are not yet contained in this documentation.



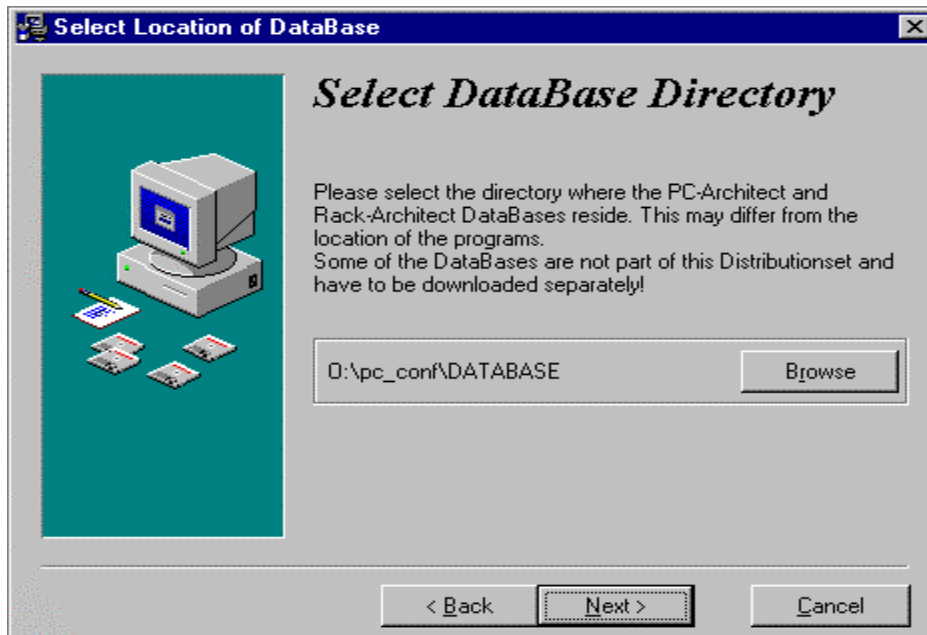
The directory where to save the installation is pre-selected. You can change the directory if you wish.



Please choose "local copy of PC-Architect". For a central server installation please contact your system administrator or our Support for help.

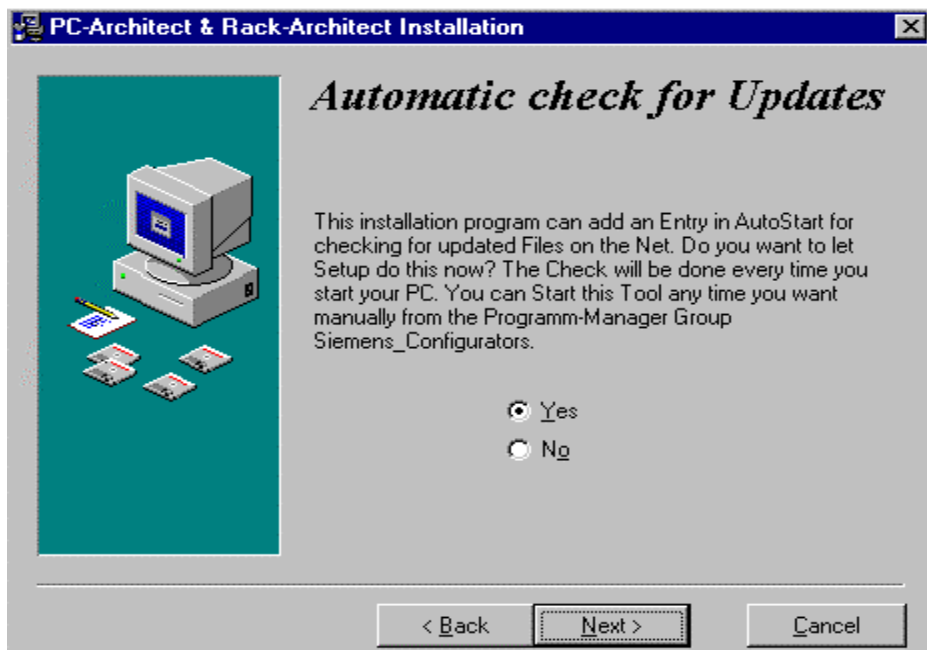


The directory for the database is pre-selected. You can also change the directory if you wish.

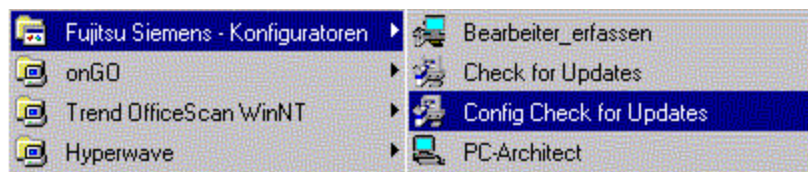


The configuration database will be automatically updated by an integrated function starting your PC.

This function is an important prerequisite for creating orderable configurations and should only be switched off if you use mobile PCs, which are not connected to the network on a regular basis. In this case, you should use a manual actualisation of the configuration data basis. You can get further information and support from our support line.

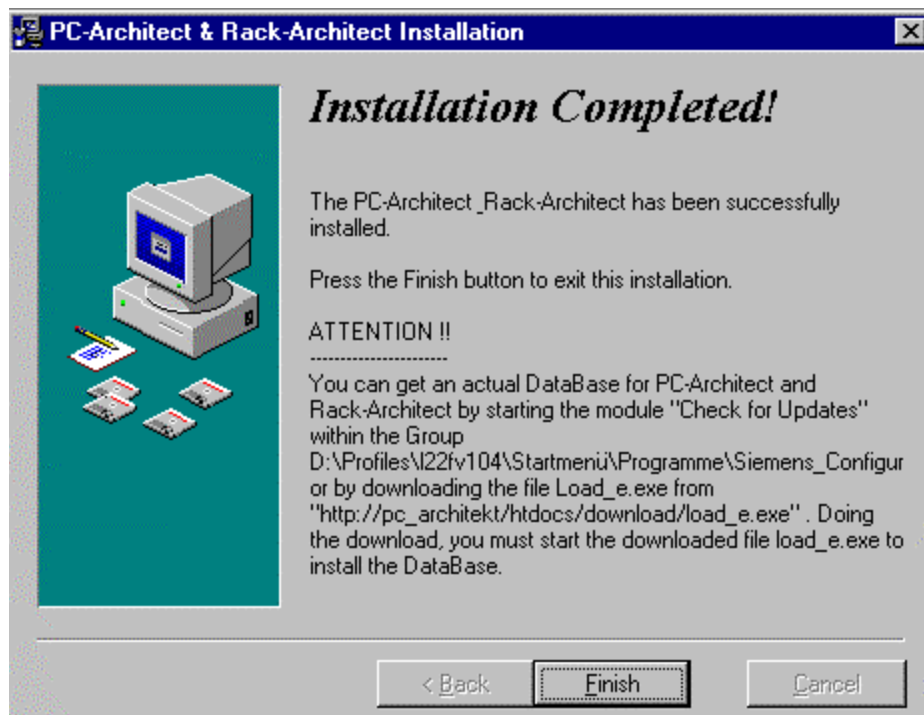


Please start now the programme to configure the automatic updates of the configuration data bases.

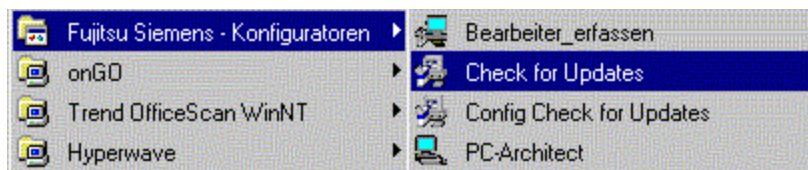


Further information can be found in the file `chk4upde.pdf`.
Please select an appropriate data source listed in the table.

The installation of the PC-/Rack-/System-Architect is finished. You should now restart your PC.



If you have chosen the function "automatic check for updates", the latest configuration database will be automatically loaded with the restart of your PC. You also have the possibility to choose this function in the Windows start menu.



Now the installation of the PC-/Rack-/System-Architect is complete.

In order to get further information or help, please refer to <http://extranet.fujitsu-siemens.com/fsc/products/configuration/main-e.htm>