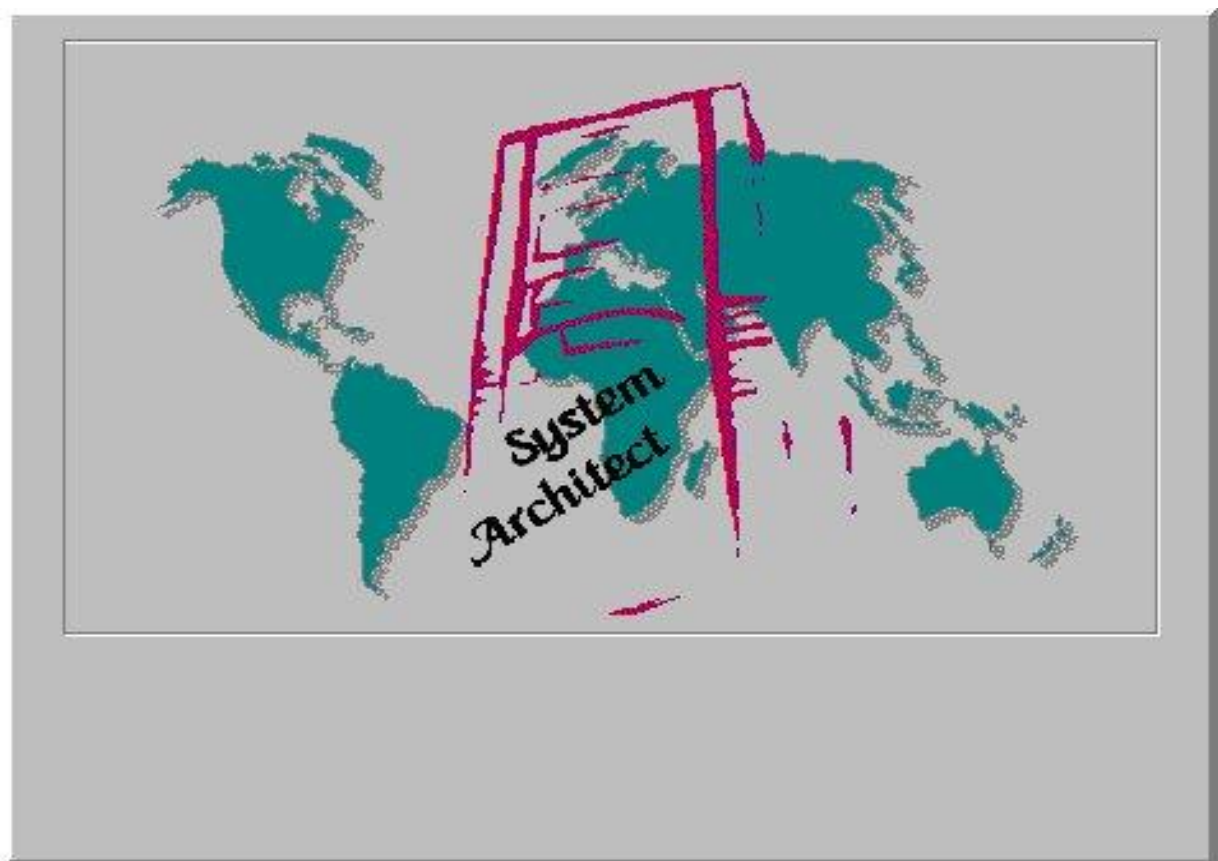


FTS configurators – Checking for updates

AUTOMATIC UPDATING



T A B L E O F C O N T E N T S

History	3
Background	3
Overview	4
Configuring the check for updates.....	5
Checking for updates.....	9
Logfile	14
Use with a firewall.....	14
Hints for administrators of an Architect network installation	15
Installation of the update tool	15
Update without dialogs.....	16
Other call parameter.....	16

History

Change log		
Version	Status / Änderungen	Datum / Autor / Abteilung
V1.0	First release	1999 / Klaus Rammig
V1.1	Update because of download server reorganisation	2001 / Klaus Rammig
V2.0	Graphical user interface revised	2005 / Klaus Rammig
V3.0	Fujitsu layout revised	2/08/2010 / Hubert Voth

Background

Since version 4.1 of the PC-Architect / Rack-Architect and later SystemArchitect a tool is provided, which automatically enables you to update the files in your configuration from a webserver. This tool was designed to be as easy to use as possible and to relieve the user of the burden to check manually if there are any new components of the System- and PC-Architect. Because simultaneously the datatraffic has to be preferably little, the first step is to transfer a statusfile, which contains a version stamp as well as an info about recent changes. If the files on your local computer system are out-of-date, an update is proposed. Should the user choose to start the update process then, the tool autonomously installs new components to the right location on his system.

Overview

During the installation of the SystemArchitect/PC-Architect the items “Check for Updates” and “Config Check for Updates” are created in the start menu group Fujitsu configurators. Moreover, the user is provided with the opportunity to create Check for Updates in the autostart group. In this way, the correspondent update process is started once the user logs into his PC. The possibility of configuring the tool must be given, because the users are differently connected to the web (the tool uses the http-protocol):

- They could have access to the Fujitsu intranet
- They could have access to the Fujitsu extranet
- They could work within a secure network themselves and need to use a proxyserver to connect to the web

Those possibilities were carefully attended to and the installation is configurable accordingly.

Configuring the check for updates

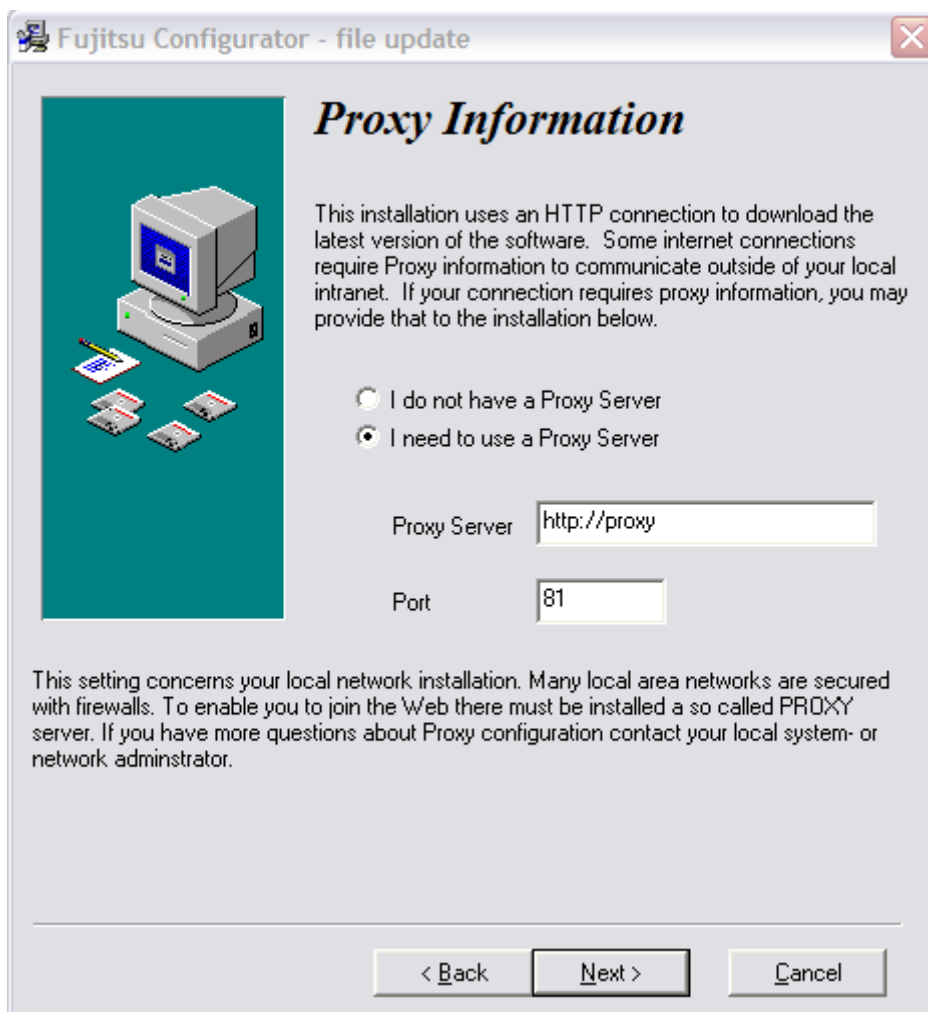
The program “Config Check for Updates” is automatically called for the first time during basic installation of the Architect and can be executed again at any time from the start menu group.



Data is transferred via the HTTP protocol. As a result, settings that are familiar to the user from those for a Web browser have to be made.

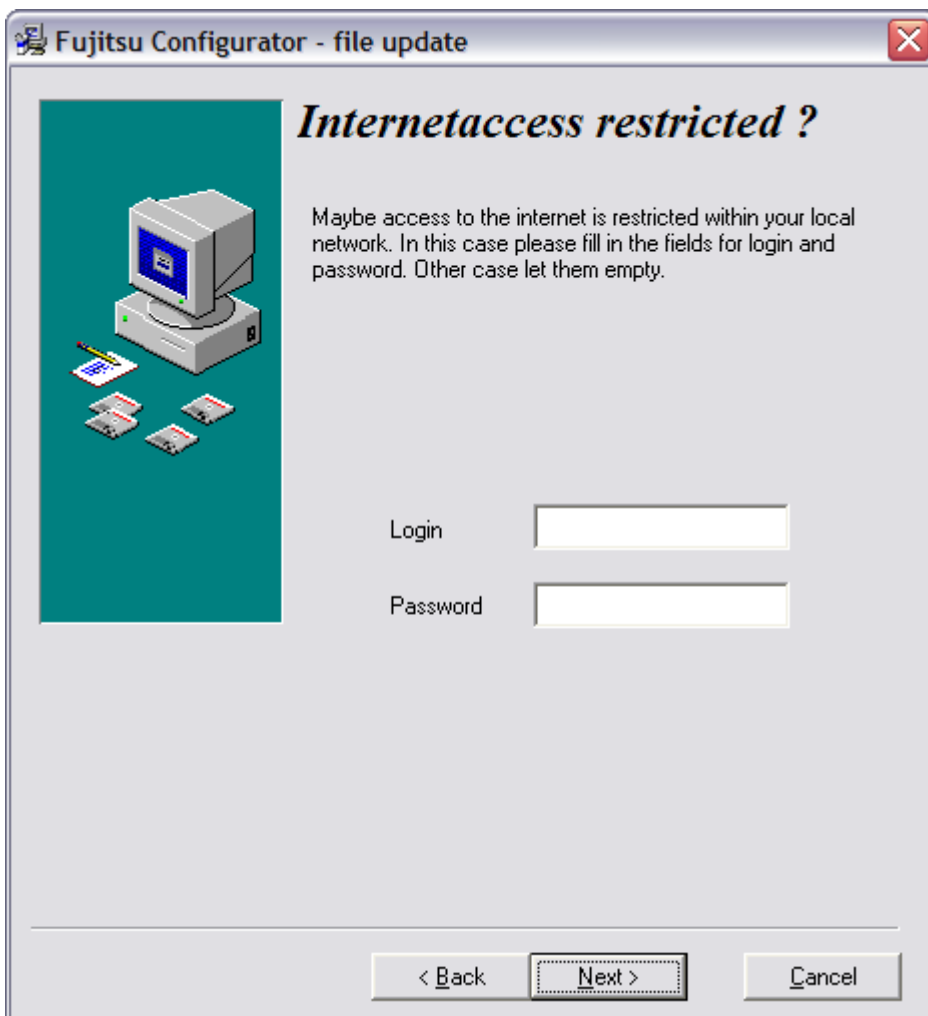
You have to change your settings according to your web options, such as proxy server, host address and login informations. There are network configurations in which access to the Web via the HTTP protocol is not only protected by a firewall with proxy, but also with a user ID. Those parameters can be set, too. If you have access to the FSC intranet, you do not have to enter a proxy server.

When the program is called, the first thing that appears is the following dialog for setting the proxy server. The user dialog is controlled by means of the buttons “Next” and “Back”.



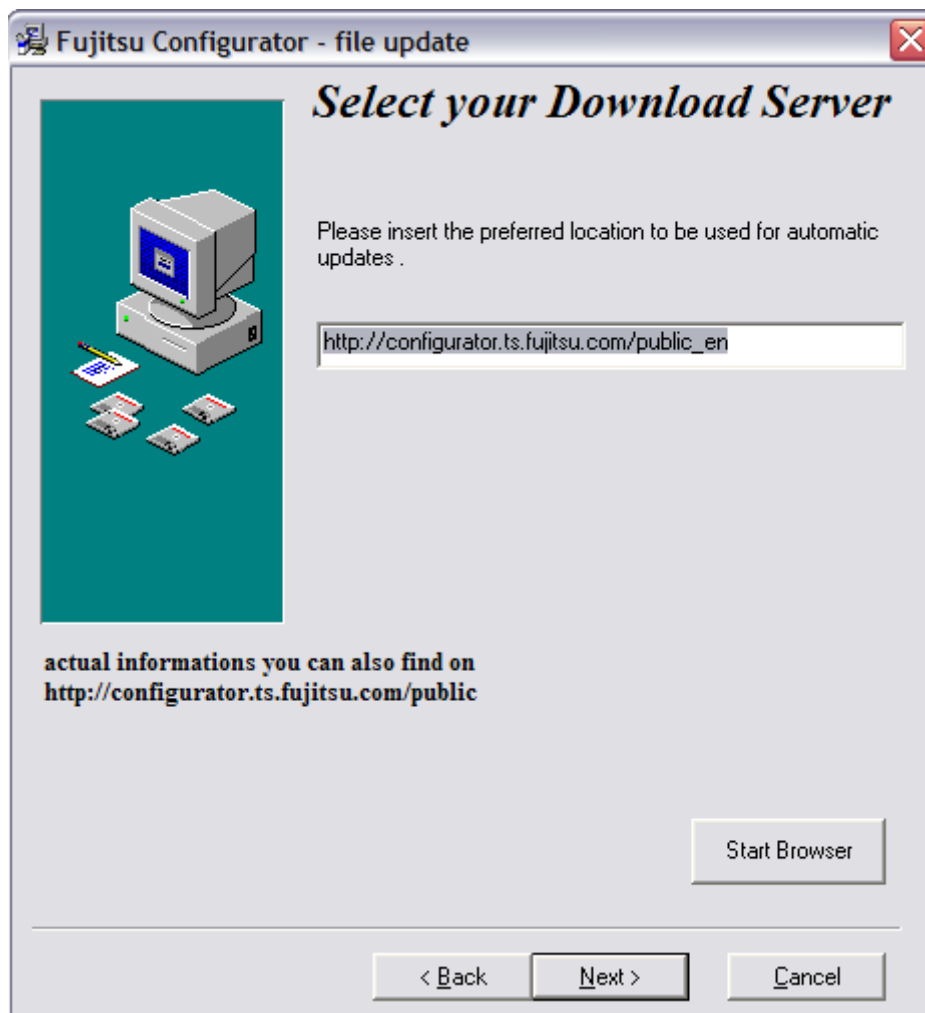
The information on the proxy server and port address used to address the server depends on the network in which your local system is integrated.

You then enter your login and password to enable you to leave your network and enter the Internet, if this is required due to the network. This is not required in most cases and the fields are left empty.

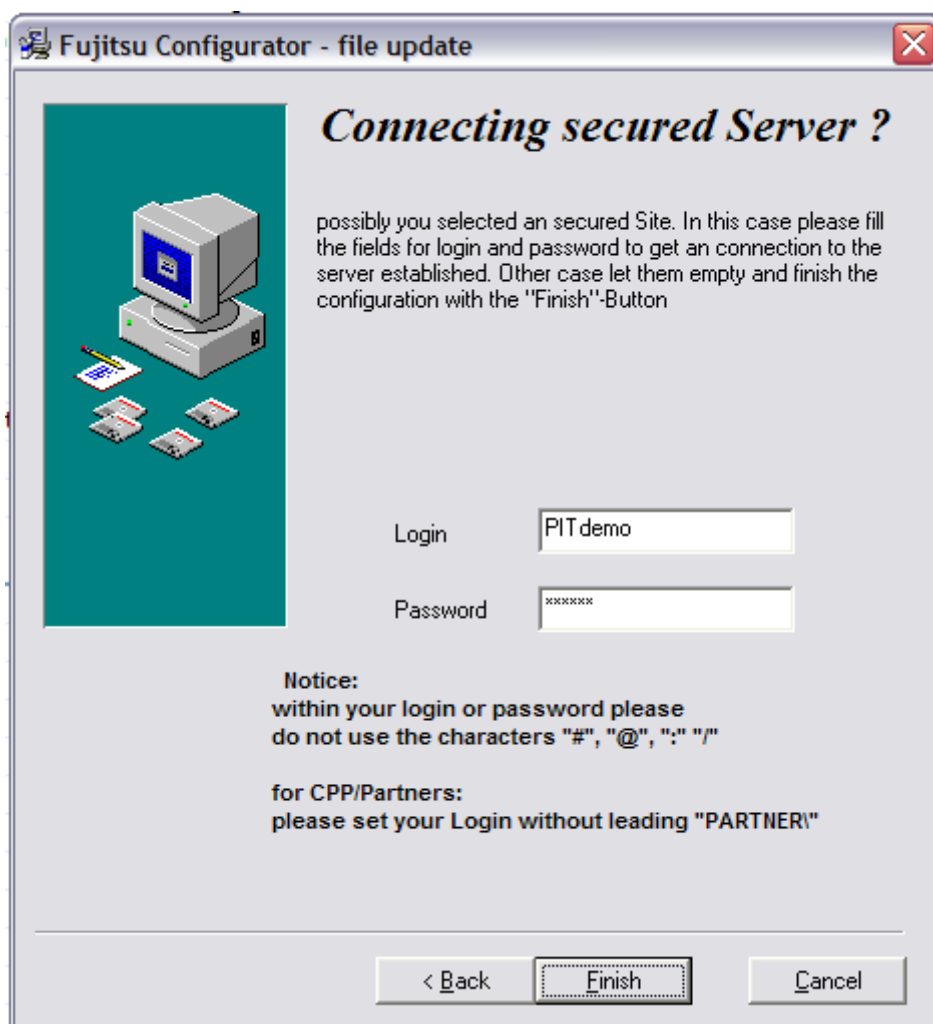


Note: If this is the case, please contact your network administrator and read the hint
→ Use with a firewall

The address of the Web server from which the information is downloaded can be set in the above dialog. The list of all Web addresses to be used is displayed when you press the button "Start Browser". The default server is the Fujitsu-Siemens extranet server. To gain access you need a login, which you can request at <https://partners.ts.fujitsu.com/com>).



In the fourth dialog, you are asked for your access authorization. The fields must be left empty for servers that do not require any access authorization.

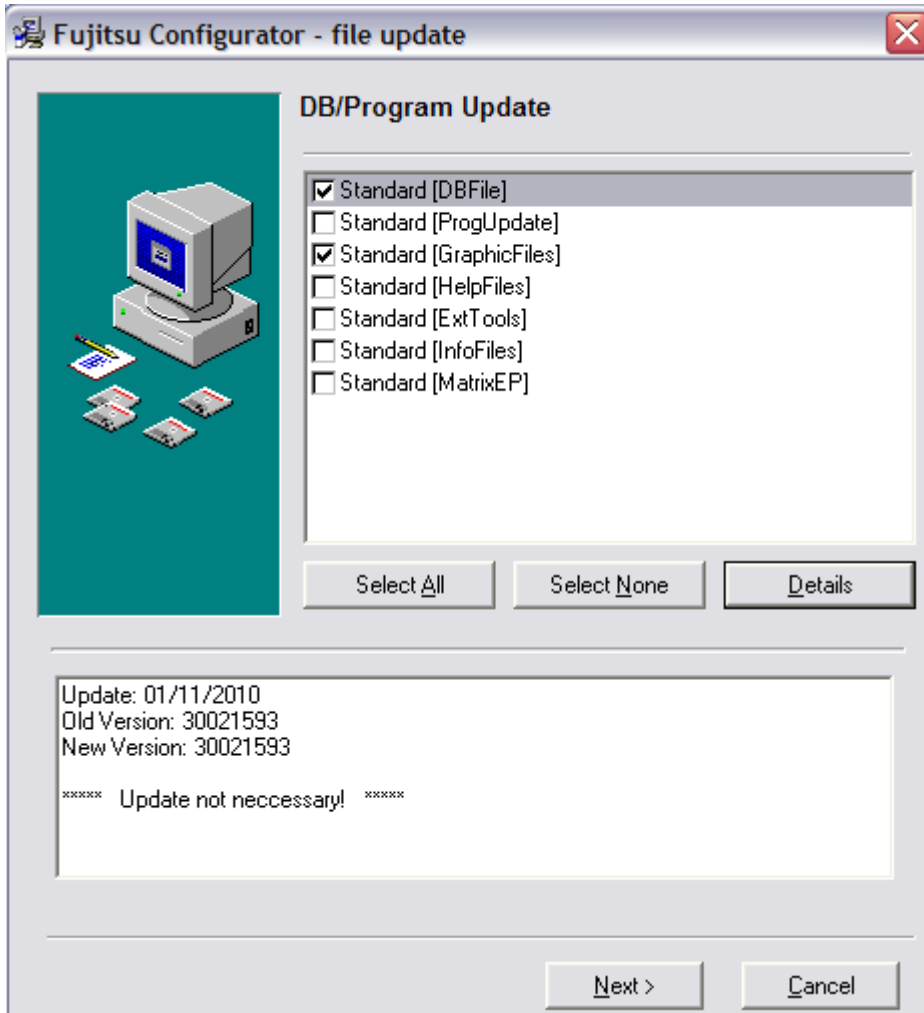


When you press “Finish”, the program “Check for Updates” is automatically launched. This may take a while, because the starting time depends on your current network connection.

Checking for updates

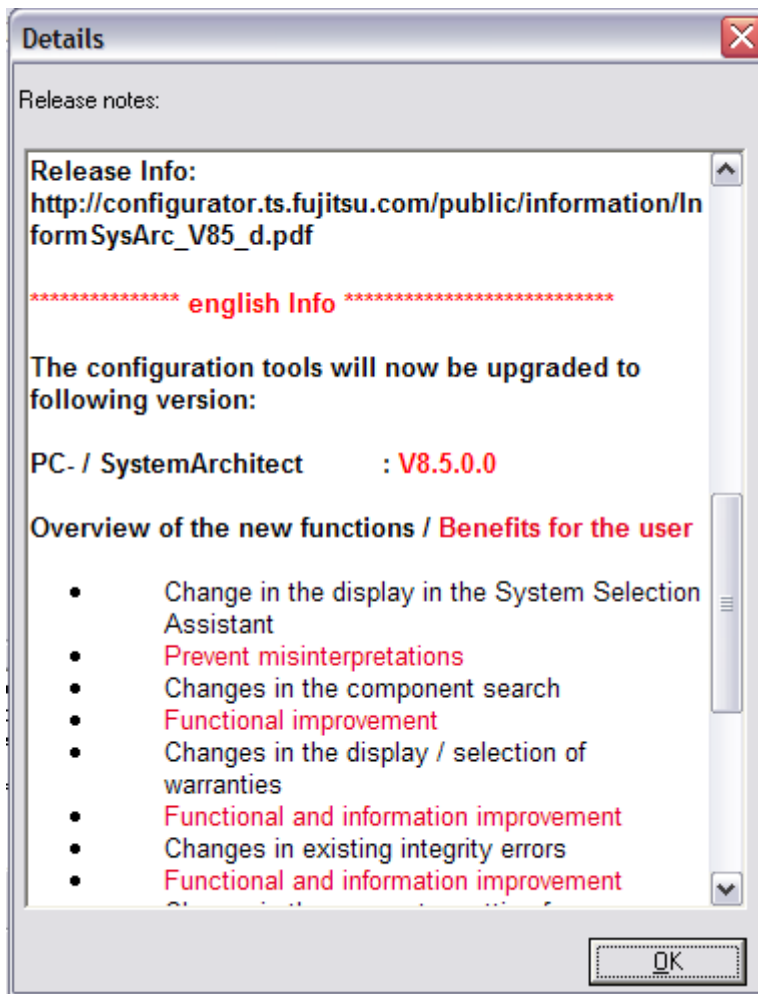
The “Check for Updates” program is also called from the program group “Fujitsu Configurators”. Since SystemArchitect release 6.6 the new “Architect MultiDataBase Manager” has been implemented and thus have been new requirements to “Check for Updates”.

First, the following screen then appears:

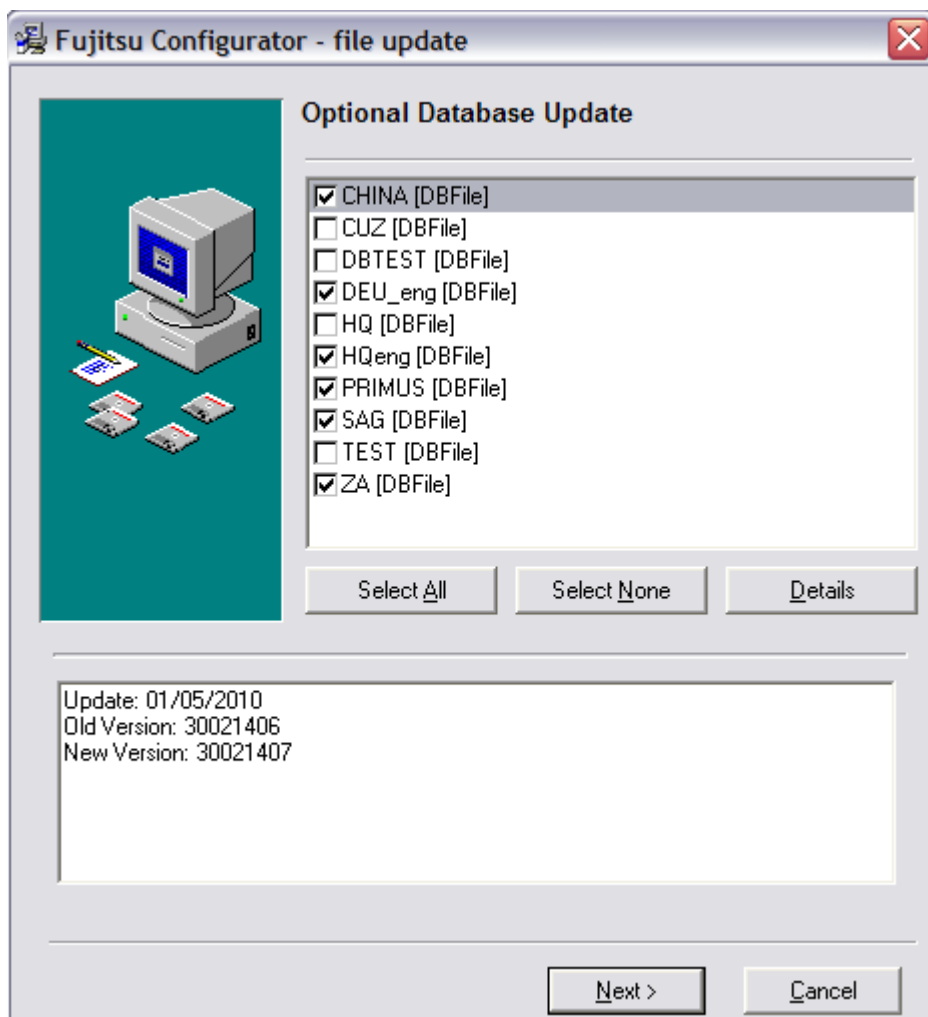


In the upper area, all the available update areas for the standard update are displayed. A check mark in front of the entry means that a more recent version for the area in question is available on the update server. Brief information on the contents of the selected area can be found in the lower part of the display. In this example, the standard database and several program updates are configured, but neither are out-of-date, as you can see in the lower part of the display.

The “Details” button shows more detailed information on the new update for the area in question. This is displayed in a separate window.



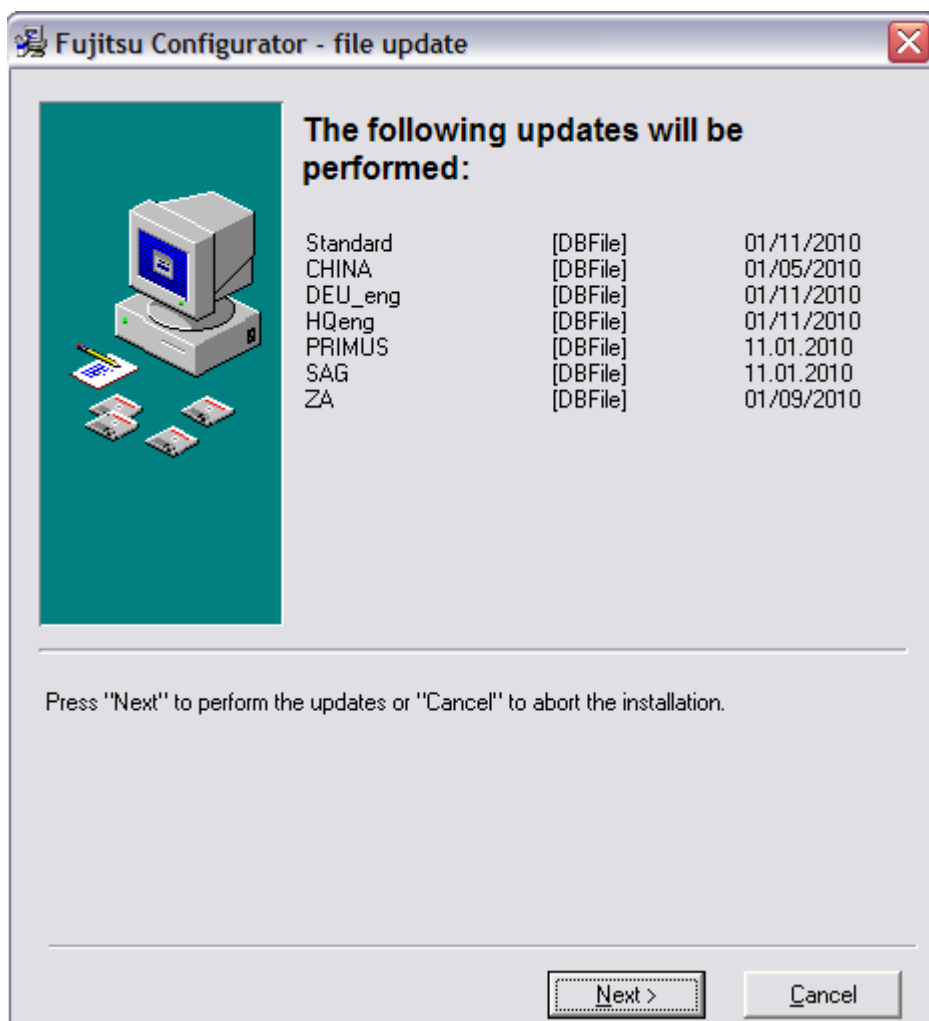
In addition, you can change the areas selected by specifically setting or removing check marks. The buttons “Select All” and “Select None” also change the areas selected. As a result, a “compulsory update” can be carried out. The update is continued when you press the “Next” button.



Only if further (optional) additional “remote databases” have been defined by means of the AMM on the local computer system, an analogous query for the databases defined there is run on the next page.

In this example, an update is necessary and the checkbox has been checked automatically.

The last dialog shows an overview of the packets, which will be installed. They will be started from top to bottom if the user presses the “Next” button.



No update necessary:

If no update is necessary, the same dialogs appear but no checkbox is checked. The last dialog then shows an empty list and no update will be performed. In case of an automatically started “Check for Updates” after the user has logged into his PC and there are no updates to be done, no dialogs will appear. Moreover, the user will receive no hints if there are no necessary updates.

Logfile

Each update is logged in two different logfiles:

1. Update.log

In this file the history of the updates are logged.

2. Load.log

This files contains more explicit informations of the last update.

Both logfiles are located in the sub-directory "logfiles", which is again located in the main installation directory of the configurators (default "pc_conf"). If you encounter problems with the installation you should first refer to the logfiles to see what kind of error occurred.

If you contact the hotline, those files should be attached, too.

Use with a firewall

There are network configurations in which access to the Web via the HTTP protocol is not only protected by a firewall with proxy, but also with a user ID. In this case, you have to enter a password to leave your network. This is not supported by the program. To circumvent this, the call parameter "/wise" must be removed when the program "Check for Updates" and "Config Check for Updates" is called.

Hints for administrators of an Architect network installation

Installation of the update tool

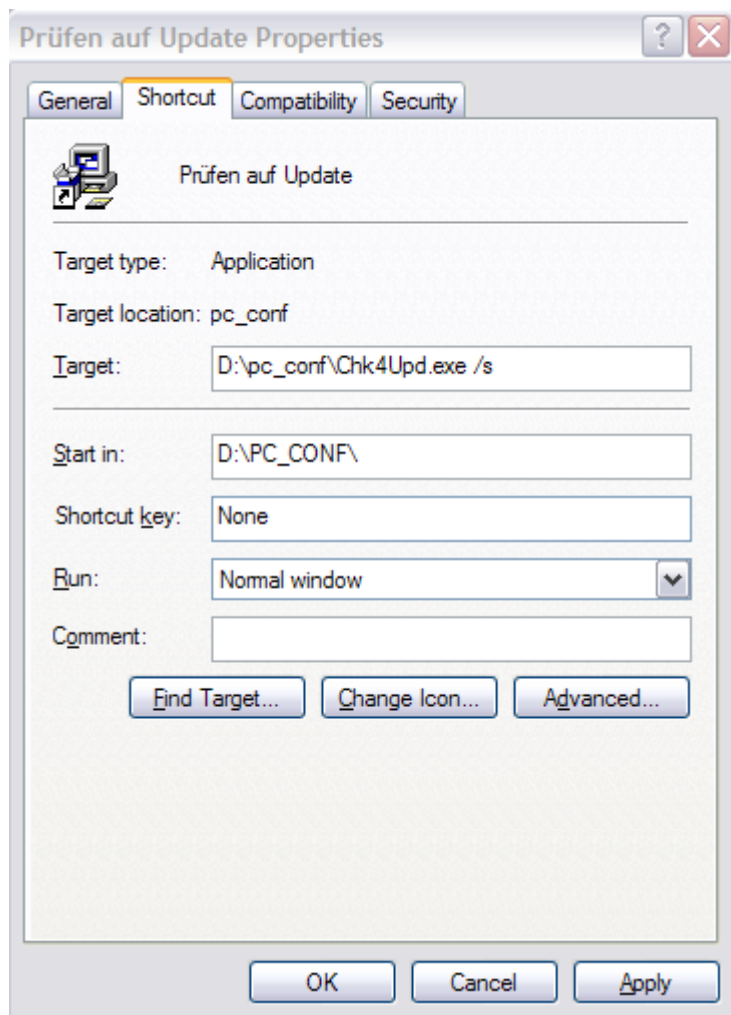
In case of a network installation of the Architects, at least one 'local' installation of the System/PC-Architect must be started. Because both the update tool and the updates themselves use many keys in the registry, an installation on the server is required.

In case of a "local" installation the update tool is installed with the Architect and a shortcut can be created in the autostart menu group.

A workgroup administrator can run the update on the server automatically by scheduling it with the Task Scheduler. In this case it is reasonable to disable the update dialogs (see below). For more informations about the Task Scheduler please refer to the Microsoft documentation.

Update without dialogs

If you want to schedule the update tool, it is possible to hide the dialogs, which will normally appear during the process, by adding the call parameter “/s”.



Other call parameter

If you want to force the installation of an update, you can add the parameter “force update”. Then, irrespective of the status information, the program will execute the update

CONTACT

Fujitsu Technology Solutions GmbH
E-mail: psct.contact@ts.fujitsu.com
Website: <http://configurator.ts.fujitsu.com/public>

Here follows the legal disclaimer of your organization:
e.g.: All rights reserved, including intellectual property rights. Technical data subject to modifications and delivery subject to availability. Any liability that the data and illustrations are complete, actual or correct is excluded. Designations may be trademarks and/or copyrights of the respective manufacturer, the use of which by third parties for their own purposes may infringe the rights of such owner. For further information see ts.fujitsu.com/terms_of_use.html
Copyright © Fujitsu Technology Solutions GmbH 2009