

# PC- und SystemArchitect External Configurators

Released date : March '07

**Issue** March 2007  
**Category** PC- SystemArchitect  
**Content** Tool changes  
**Use** External/ Internal  
**Pages** 2

## External configurators for STORAGE

The SystemArchitect will be extended to additional external configurators. These are supporting special configurations with Storage solutions. The SystemArchitect offers the possibility of starting external configurators. Afterwards result of the configuration could be imported to SystemArchitect.

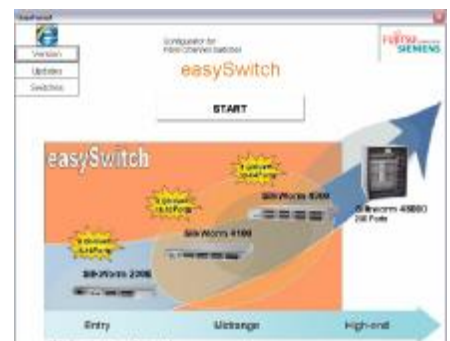
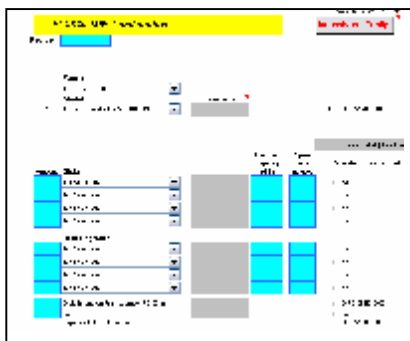
**easyBackup:** easyBackup is a valuable help in configuring small to medium sized Backup solutions for Storage Management. Further information and user guide: <http://extranet.fujitsu-siemens.com/easyBackup>.

**easySwitch:** easySwitch is solution assistant for Fibre Channel Switches. Further information and user guide: <http://extranet.fujitsu-siemens.com/storage/configurators/easySwitch>

**NetWorker License Configurator:** The NetWorker License Configurator is intended to simplify the licensing procedure for NetWorker-Software. Further information and user guide: <http://extranet.fujitsu-siemens.com/com/ep/storage/configurators/networker>

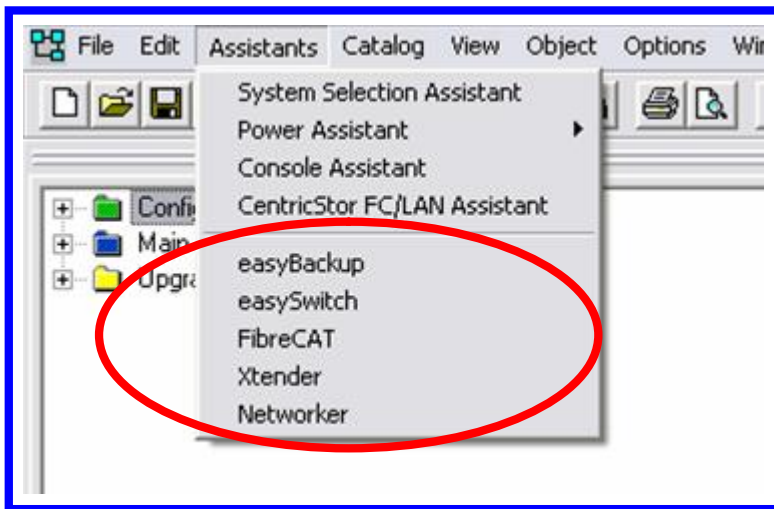
**Xtender License Configurator:** The EmailXtender and DiskXtender licences can easily be defined with Xtender License Configurator. Further information and user guide: <http://extranet.fujitsu-siemens.com/com/ep/storage/configurators/Xtender>

**FibreCat:** FibreCat solution assistant support easier configuration of FibreCat products. Further information and user guide: <http://extranet.fujitsu-siemens.com/storage/configurators>



## Calling the function in SystemArchitect

The function is called solely from a sub-item of the "Assistants" menu.

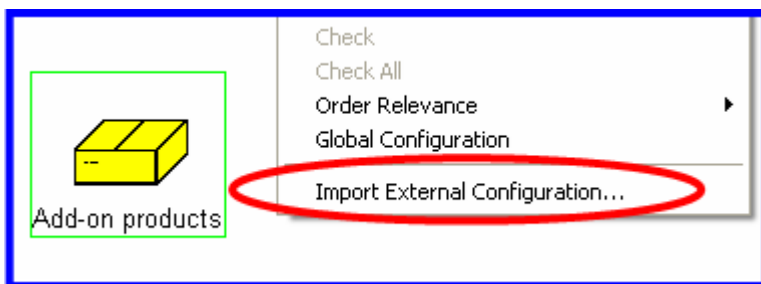


The external configurator is then started and the user could define the required configurations with external configurator outside of SystemArchitect.

At the end user could stored the configuration details within external configurator. It is stored as a "\*.SAI" file (SystemArchitect Import file). External configurator is then usually exited.

## Importing the SAI file

In order to transfer the result of the external configuration to the current SystemArchitect configuration, the user have to call the function "Import External Configuration" from the view-specific context menu in the standard view (for floor stand components) or in the rack view (for rack components) and enter the reference to the SAI file.



Following this, the imported components are transferred to the configuration after being checked in SystemArchitect. Any errors that occur are indicated.

## Distribution

The distribution of external configurators will be carried out as part of the standard "automatic update" process. Those external configurators could be installed also manually from the configurator web site: <http://configurator.fujitsu-siemens.com/public>

## Support and Help:

Support and help related about the external configurators: [STORAGE-PM@fujitsu-siemens.com](mailto:STORAGE-PM@fujitsu-siemens.com)