

# Hybrid Rack Configurations Can Now Be Ordered Ex Works

**Issue** February 25, 2005  
**Category** PRIMERGY Servers  
**Content** Life Cycle  
**Use** External / Internal  
**Pages** 3

The “hybrid rack” is not a new rack, but rather a PRIMECENTER rack that has a hybrid configuration of PRIMERGY and PRIMEPOWER systems and can be supplied directly ex works. The greater production overhead for such a hybrid rack generates extra costs. On the other hand, the hybrid rack has the following advantages: automatic order processing, and delivery of a complete hybrid configuration that has been assembled and tested at the factory. This relieves sales of the effort of installing the systems on site and synchronizing the individual orders, and thus saves time and money.

The related new functions of the System Architect will be implemented in March. This simplifies ordering logistics, because hybrid configurations can then be ordered ex works. The “PRIMECENTER Racks” family has moved up a level in the System Architect; the various servers (PRIMERGY and PRIMEPOWER) can be configured there. In order to simplify the KVM (keyboard / video / mouse) cabling, we have also introduced a new cable class for “KVM Connections”.



## Background:

The PRIMECENTER rack family from Fujitsu Siemens Computers is the standardized rack platform for PRIMERGY, PRIMEPOWER, storage solutions, BS2000 and third-party products. Joint shipment of PRIMERGY and PRIMEPOWER servers ex works in a PRIMECENTER rack will now be possible. You can find further information on this and the description of the configuration steps for consultants and specialists later in this Inform.

## How are hybrid configurations (PRIMERGY, PRIMEPOWER, storage) handled?

### PRIMERGY (PY) and storage (ST):

PRIMERGY and storage products are configured as usual in the System Architect, mounted in the rack at the factory (without this step creating a hybrid rack) and shipped together.

### PRIMEPOWER (PW) and storage (ST):

PRIMEPOWER and storage products are configured as usual in the System Architect, mounted in the rack at the factory (without this step creating a hybrid rack) and shipped together.

### Hybrid rack: PRIMERGY (PY), PRIMEPOWER (PW) and optional storage (ST):

Such configurations will be supported when System Architect Version 6.4.5 is released. In addition, a service flat rate will be charged for each hybrid rack to cover integration service costs. This integration service comprises synchronizing the various orders on one delivery date and ensuring that the hybrid racks with all the mounted components can be supplied in one delivery. A hybrid rack is always created when PRIMERGY and PRIMEPOWER components are configured together in a PRIMECENTER rack. This is always indicated to the person creating the configuration.

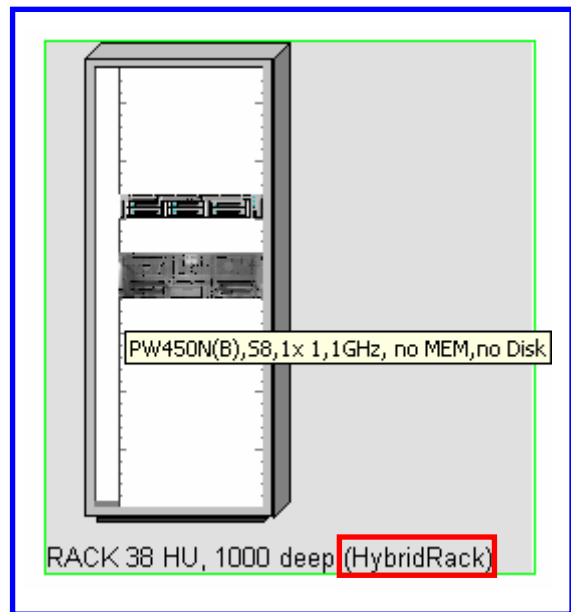
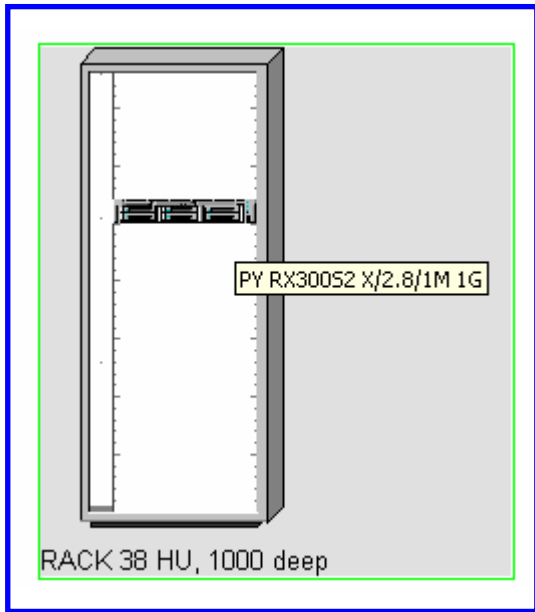
## Fujitsu Siemens Computers order number:

**S26361-F1647-L700** Hybrid rack installed ex works, PW and PY

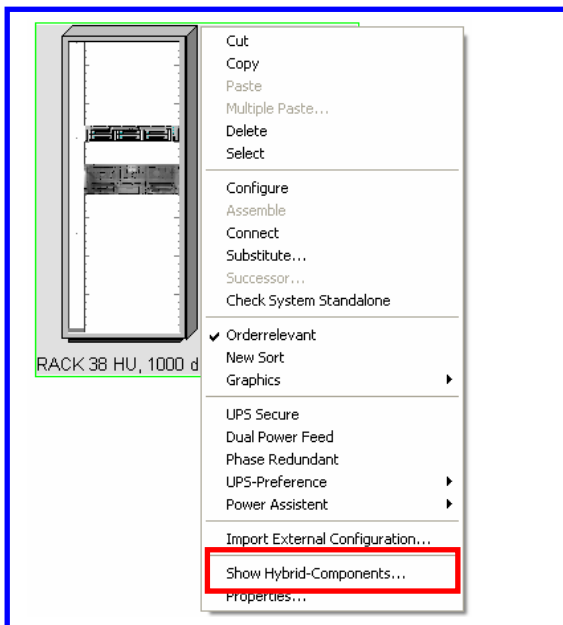
This component is always required for producing a hybrid rack. Consequently, it is automatically added by the System Architect. If you cannot find this order number in the database (because, for example, the price is missing), the System Architect issues an error message to this effect. To obtain configurations that do not have conflicts and to ensure rapid order processing, **System Architect Version 6.4.5 must always be used** as of distribution of the **March database**.

**System Architect description:**

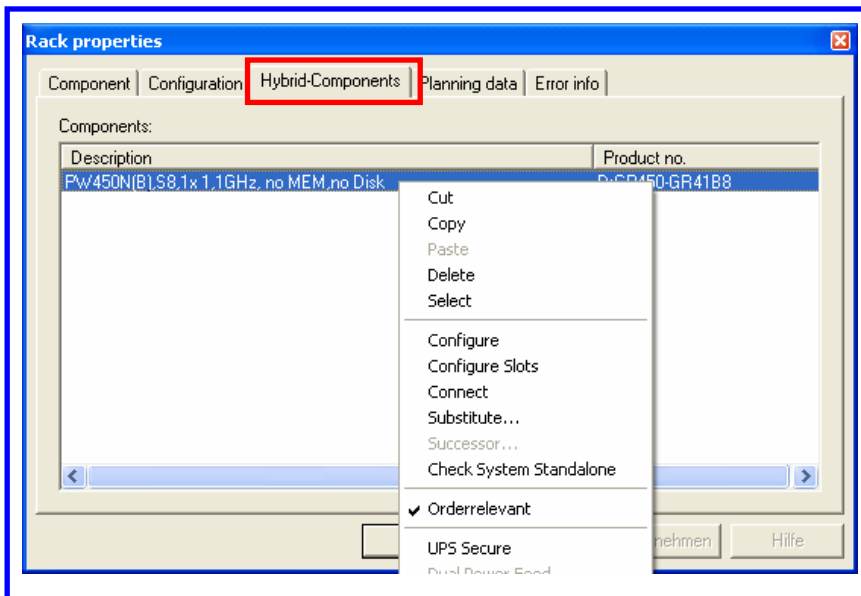
- The racks are selected as described in the **New category “PRIMECENTER Racks**
- As customary, the user selects a rack from the PRIMERGY or PRIMEPOWER product family.
- Rack components are added as usual by drag & drop from the selection box (“Rack components” tab). The example shows a selected PRIMERGY rack that is fitted with a PRIMERGY system. The rack is not a hybrid one at this stage (figure on the left).



- A hybrid rack is not created until a component from the other server product range is added. The user then sees the name extension “HybridRack”, which cannot be deleted (figure on the right).
- It may well be the case that a hybrid rack is created by components that are not as obvious as in the above example. All types of component, such as cables, adapters and mounting components with the height “0” (added by the function “Configure” or so as to resolve conflicts), may likewise be responsible for this. So that you can obtain information quickly on the component that is creating a hybrid rack, a new context function “Show Hybrid-Components” is available if the rack created is a hybrid one.



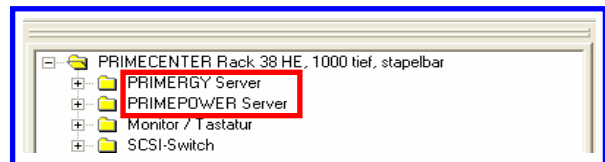
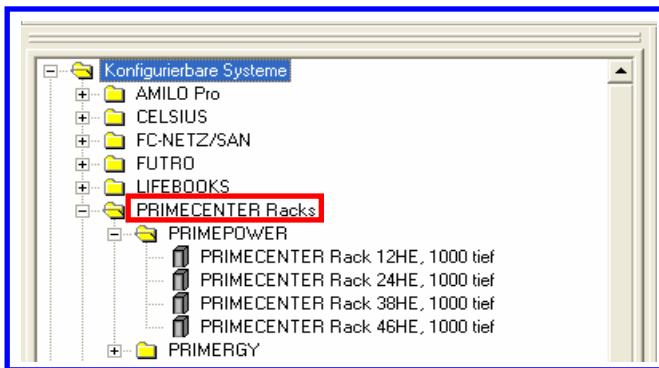
- Selection of this function corresponds to the context function “Properties”. In addition, the tab “Hybrid-Components” is enabled directly.
- This tab is only available if the rack is a hybrid one.
- It contains **all** the components that are responsible for creating a hybrid rack (and so for activating the service flat rate). This tab also provides the familiar component-specific context functions for each of the displayed components so that they can be modified simply and directly.



- The service flat rate is added in the background, in the same way as for the handling of dummy panels. The component is constantly included in pricing in the background and is only output in the exports WORD, EXCEL, bill of material and ASK file. The component is not visible on the interface of the System Architect, unless the user has added it manually.

**New category “PRIMECENTER Racks”**

- The “PRIMECENTER Racks” family with the models “PRIMERGY” and “PRIMEPOWER” is being implemented. This will make it possible to enter the configurable racks and rack servers directly and obtain a better overview of them. After a selection has been made, the available server systems are offered in the rack view in the new rack categories “PRIMEPOWER Server” and “PRIMERGY Server”. These are replacing the former category “Server”.
- The figures below show the new assignment:



**New cable class “KVM-Connections”**

- The new cable class “KVM-Connections” groups the connectors “PS/2 mouse”, “PS/2 keyboard”, “VGA SubD-15”, “USB”, “Sun IO” and all outputs of the KVM switches. To date, these connectors were assigned to the cable class “Peripheral-Connections”. The new class permits exclusive presentation of all KVM connections in the cable view. This is achieved by enabling the new cable class in the cable filter box.

