

INFORM

New Version 9.0.0.7 PC and SystemArchitect Released 1st August '11

Issue	August 2011
Category	PC / SystemArchitect
Content	Tool change
Distribution List	External / Internal
Pages	7

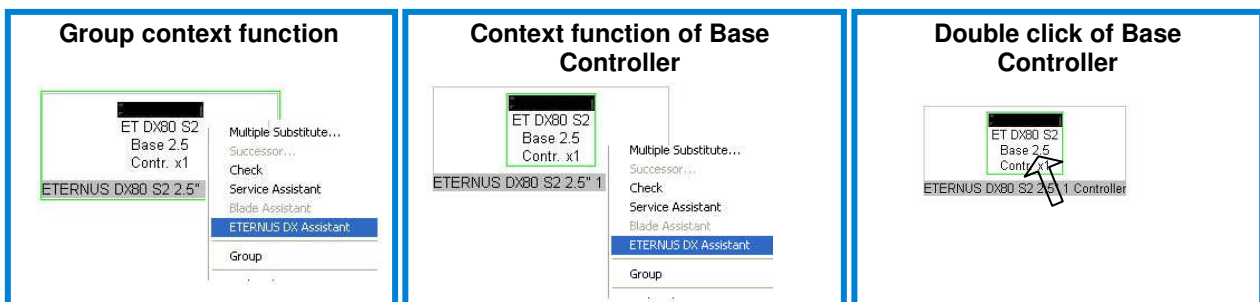
New improvements PC- und SystemArchitect 9.0.0.7

Release date: 1st August 2011

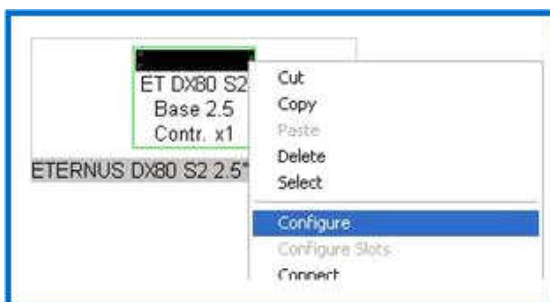
Improvements concerning start of the „ETERNUS DX Assistant“ (wizard) for ETERNUS DX80 S2/ DX90 S2/ DX410 S2 und DX440 S2

Now the „ETERNUS DX Assistant“ will be start by ETERNUS DX LowEnd systems DX80 S2/ DX90 S2/ DX410 S2 and DX440 S2 additional two following ways:

- o via the context function (right mouse button) „ETERNUS DX Assitant“ of the Base Controller or Drive Enclosure
- o also via „double click“ of the Base Controller or Drive Enclosure



The configuration via the „Grid-View“ also possible via the context function „Configuration“ of the Base Controller or Drive Enclosure.



New calculation of the net hard disk capacity for the DX ETERNUS Family

The hard disk capacity has been converted to the technical base of 1024 (1024*1024=1GB). Therefore, the hard drive capacity is reduced accordingly.
Sample: 600GB Hard disk from 559,1 GB to 546,0 GB

Extract from the release 9.0 INFORM:

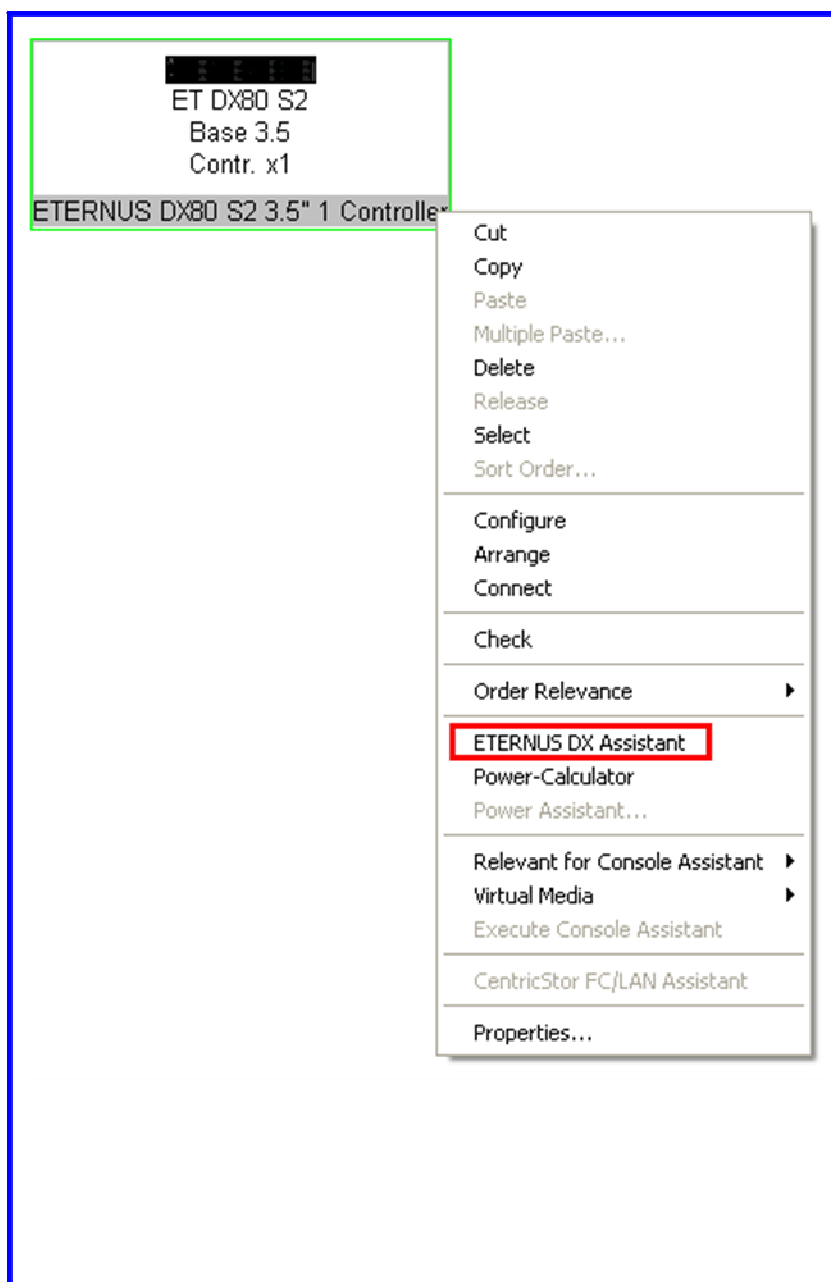
Introduction of the ETERNUS DX Assistant

Introduction

The previous 'RAID Assistant', which was available for the systems ETERNUS DX4xx and DX8xxx, is replaced by the 'ETERNUS DX Assistant'. This new assistant contains a new interface structure, extended functionalities and can be used for all ETERNUS DX systems. The basic concept of the previous 'RAID Assistant' has been retained. This is described in detail in the INFORM about PC- and SystemArchitect Version 8.7 (June 2010). The assistant provides support during configuration and simplifies the partially existing complex interactions - but does not replace the necessary background knowledge of the product. The older DX-60/80/90 systems of series 1 have been taken out of the new assistants and are to be configured as before.

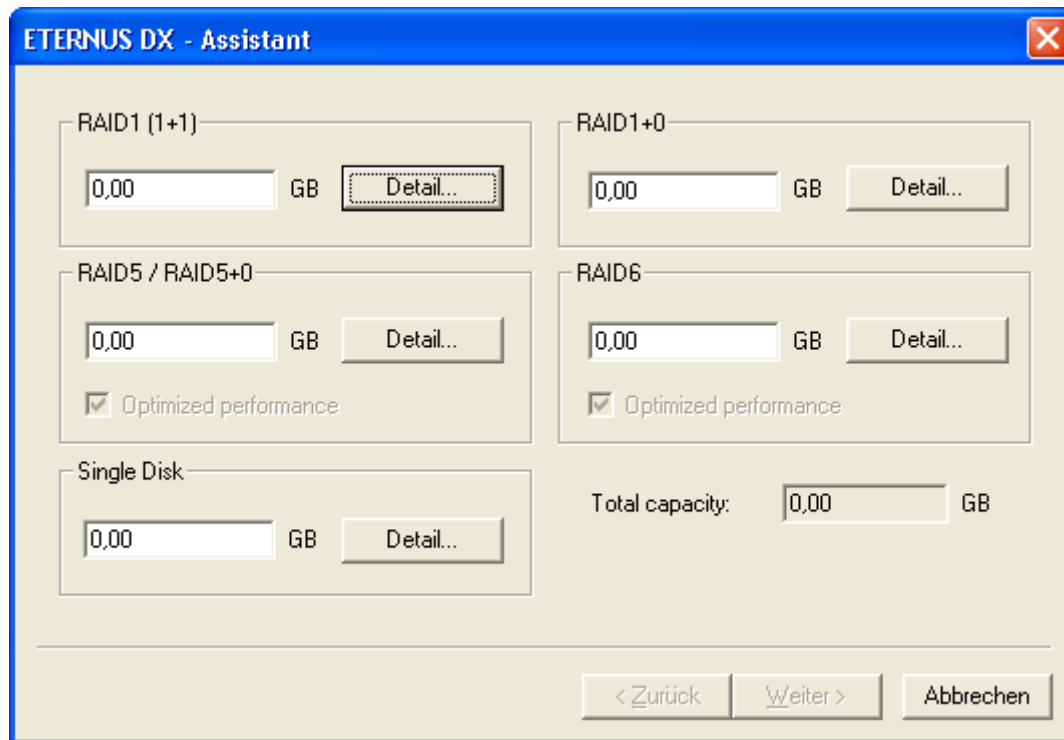
Calling the function

Since all DX components always exist in the configuration as a group, the assistant is provided as a context function of the surrounding group.

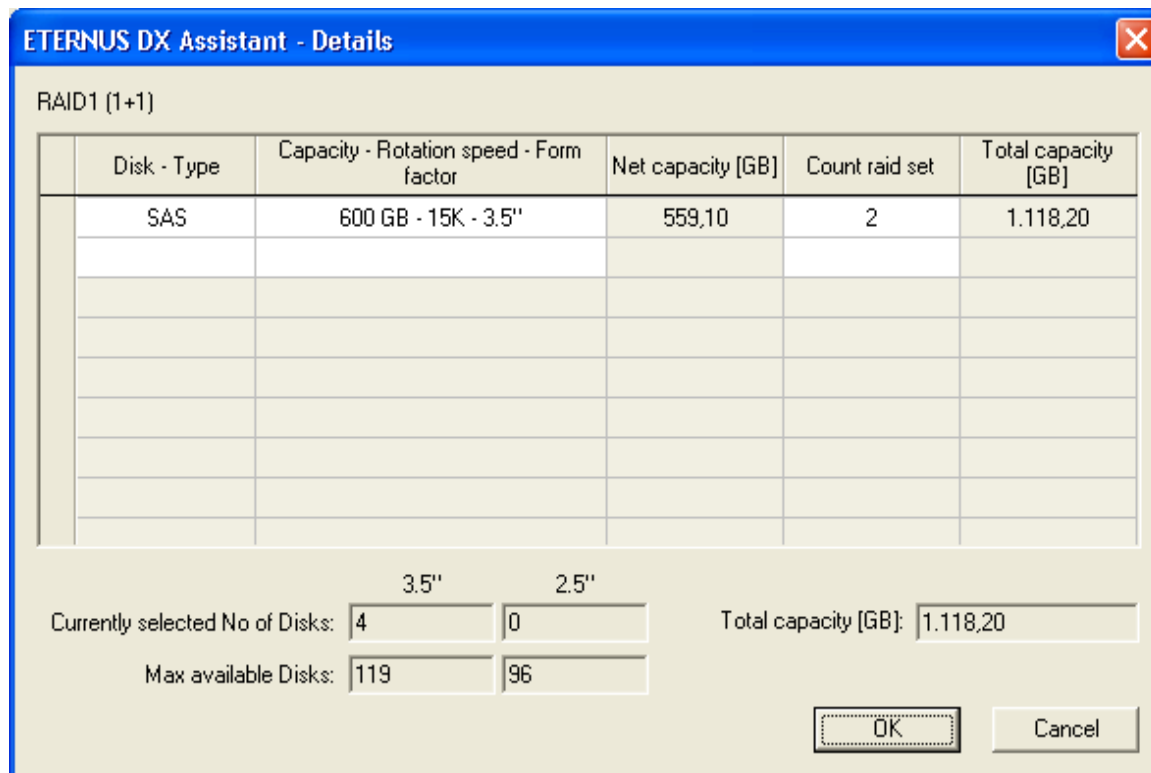


Cont.: Introduction of the ETERNUS DX Assistant

A dialog then opens, which - as in the previous RAID Assistant - queries the required capacities.



New features have been implemented in the 'Details' dialog.

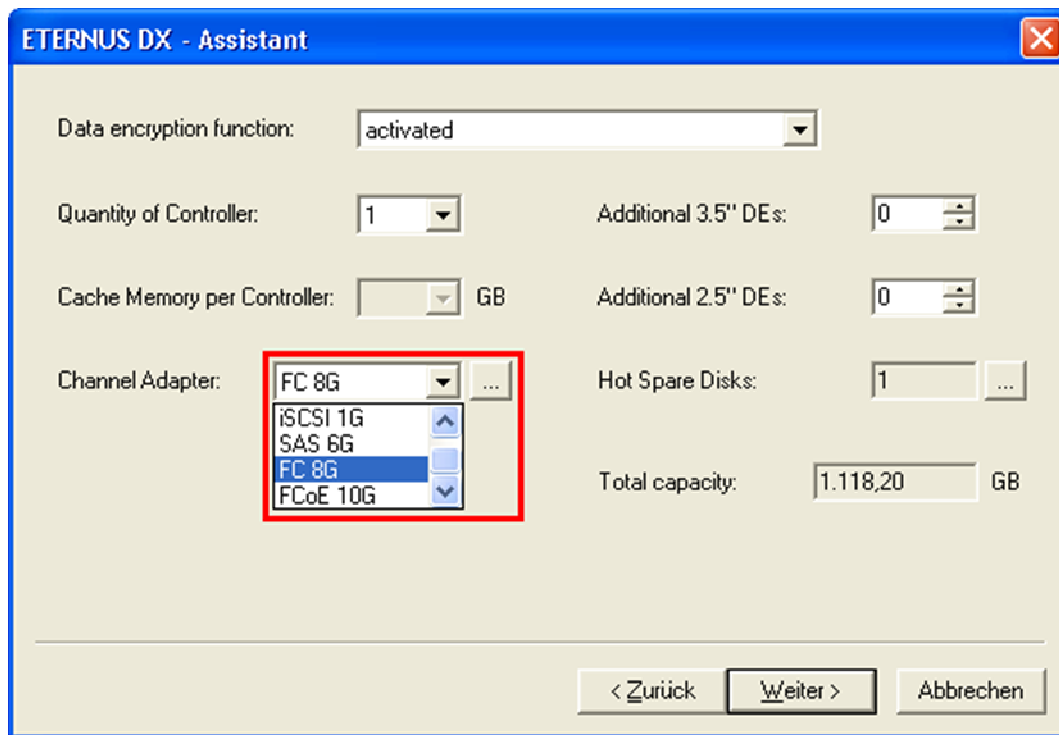


- To facilitate disk selection capacity, rotation speed and form factor have been put together in one selection criterion.
- The overview, bottom left, has been improved.
- The total capacity of an input line is also immediately displayed during first input.

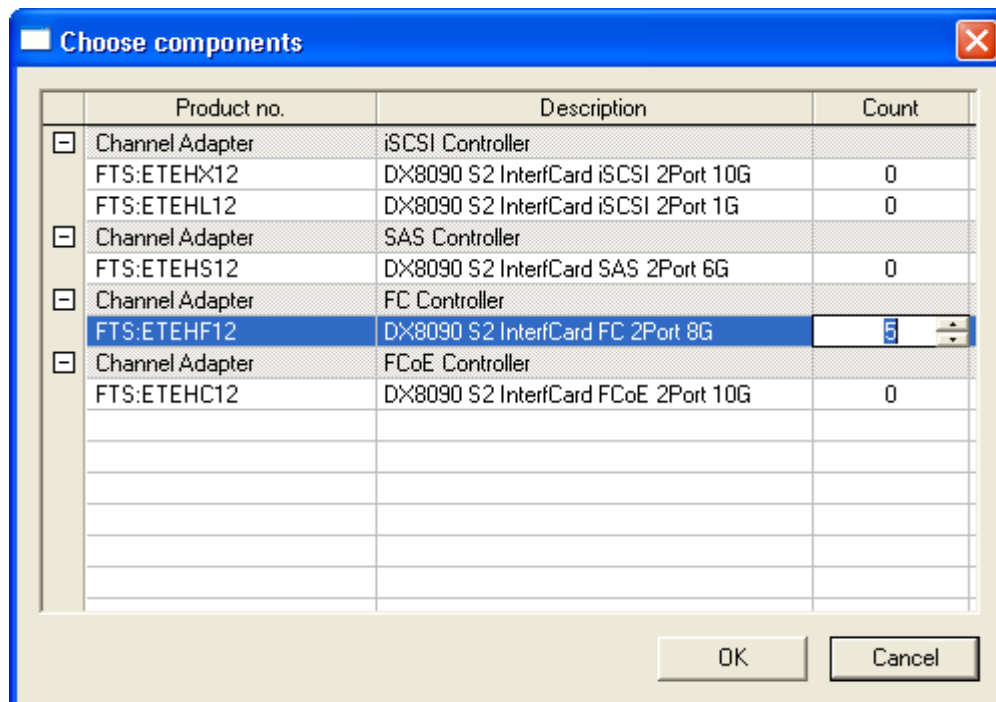
Cont.: Introduction of the ETERNUS DX Assistant

Only hardware-relevant parameters are now queried on the second page of the dialog. In particular, the selection of the interface to the host system now also takes place here.

A channel adapter is already preset (FC 8Gbit); if no other selection is made, the assistant transfers the preset channel adapter to the configuration. In the DX4x0 and DX8x00 systems the cache has been preset to the maximum size. This value can be changed by the user.

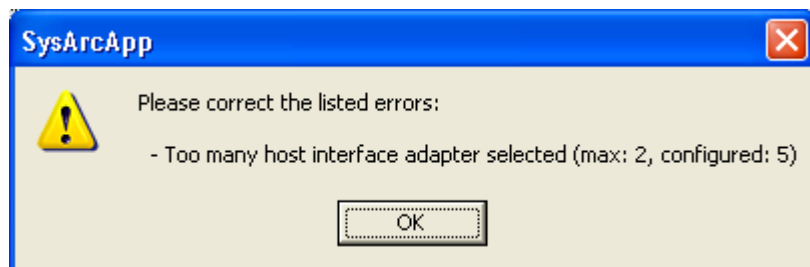


Selection is either via the drop-down menu or in more detail via the small button with the points.

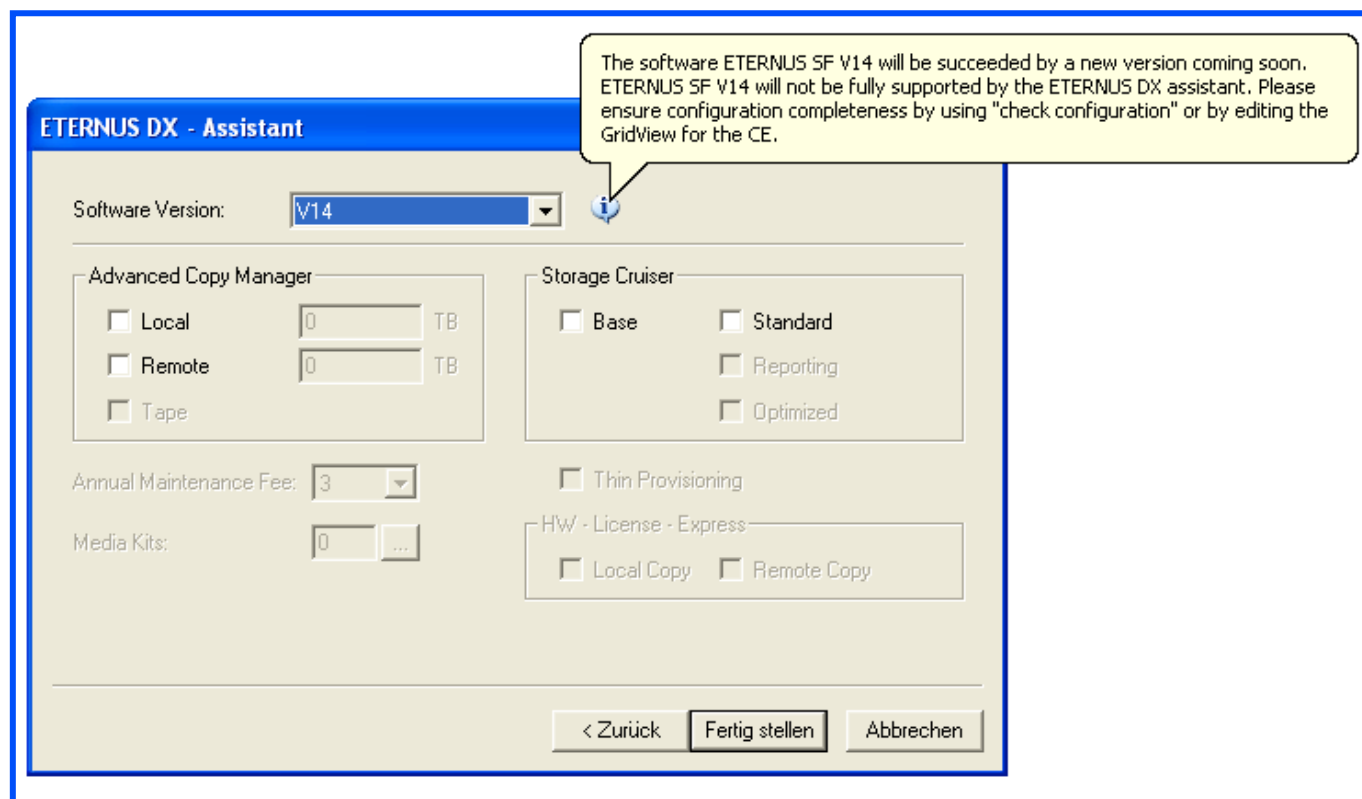


Cont.: Introduction of the ETERNUS DX Assistant

A check as to any incorrect input takes place here.

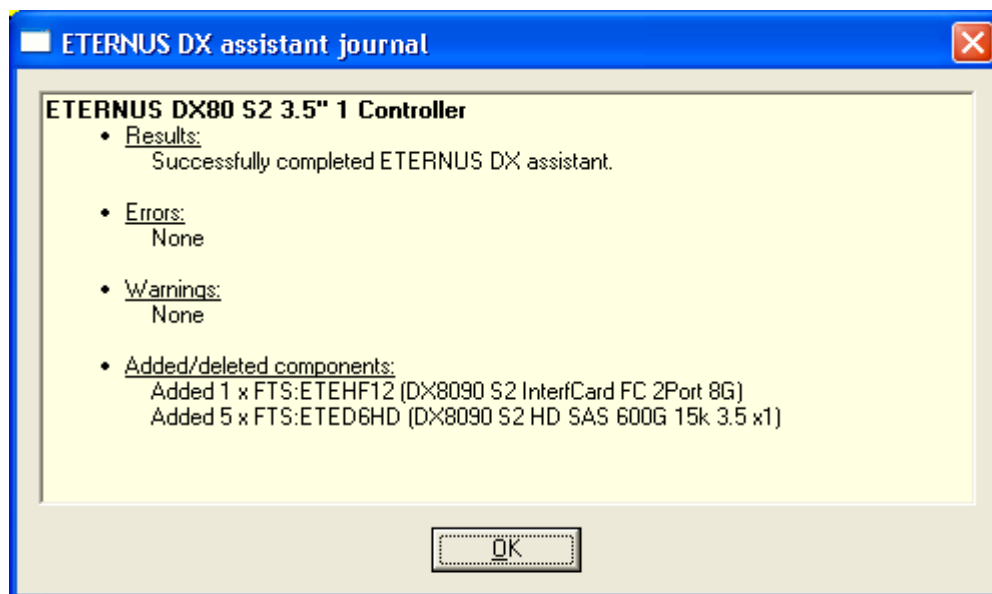


All ETERNUS SF software-relevant parameters are queried on the new third page of the dialog. Parameters that are not relevant for the selected base system appear grayed out. This dialog is already prepared for the coming version v15, thus making it possible to fully configure the ETERNUS DX storage system without "Configuration View". As long as this ETERNUS SF version v15 is not available, the SW has to be completed as before according to the ETERNUS DX Assistant, with "Configuration View".



Cont.: Introduction of the ETERNUS DX Assistant

The final dialog, once you have selected the button "Finish", is also new. This dialog has been adapted to suit the other already existing assistant logs and contains any resulting errors that prevent the assistant from running, any warnings that should be taken into account and above all a list of added or deleted components.



All systems configured via the ETERNUS DX Assistant may only be modified in places that are not entered by the assistant. For example:

- Missing components, assembly material, etc.
- Warranty extensions
- External data and power cabling

In order to give the components managed by the assistant better protection the former are shown in the configuration views as disabled.

