

INFORM

New version 9.2 **PC and SystemArchitect** Planned release 21st December '11

Output	December 2011
Category	PC / SystemArchitect
Content	Tool change
Distribution	External / Internal
Pages	18

Overview of the new functions / Benefits for the user

- **Automatically added, recommended warranty extensions**
Extension of the Service Assistant for HDD discard
Reduction in warnings; simpler configuration
- **Reintroduction of global components**
Better support for the configuration of globally available components
- **Changed configuration of the storage modes for PRIMERGY**
Better user support, prevention of incorrect orders
- **New parameters in the ETERNUS CS LAN/FC Assistant**
Support of newer technologies
- **Various minor changes**
Improvement in operation / Error prevention

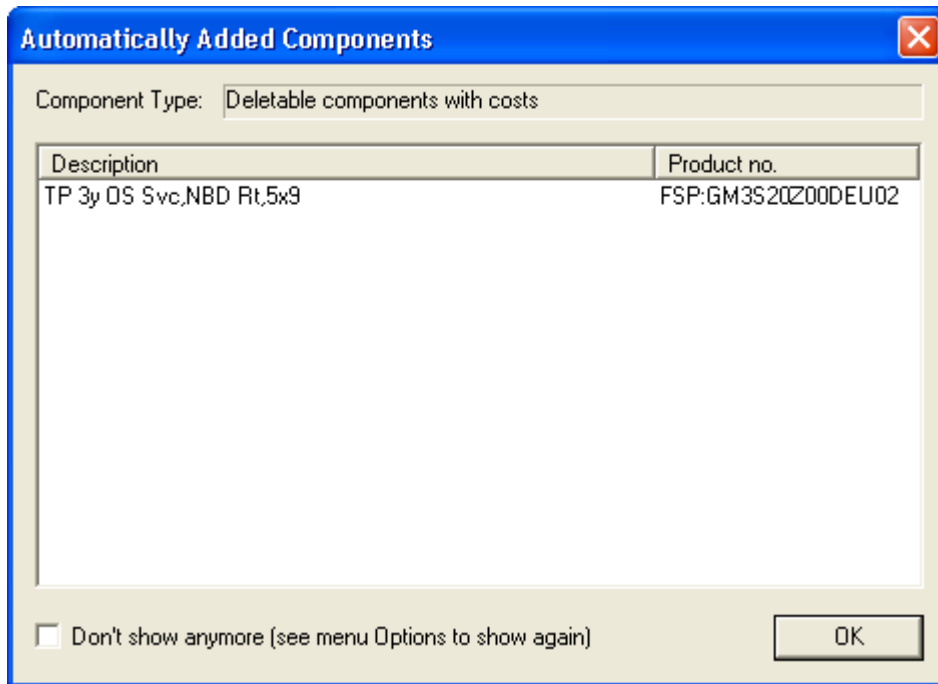
Automatically added, recommended warranty extensions

Introduction

Until now a warning has been displayed during the check for each newly added system, which asked the user to make an appropriate warranty statement for the respective system.

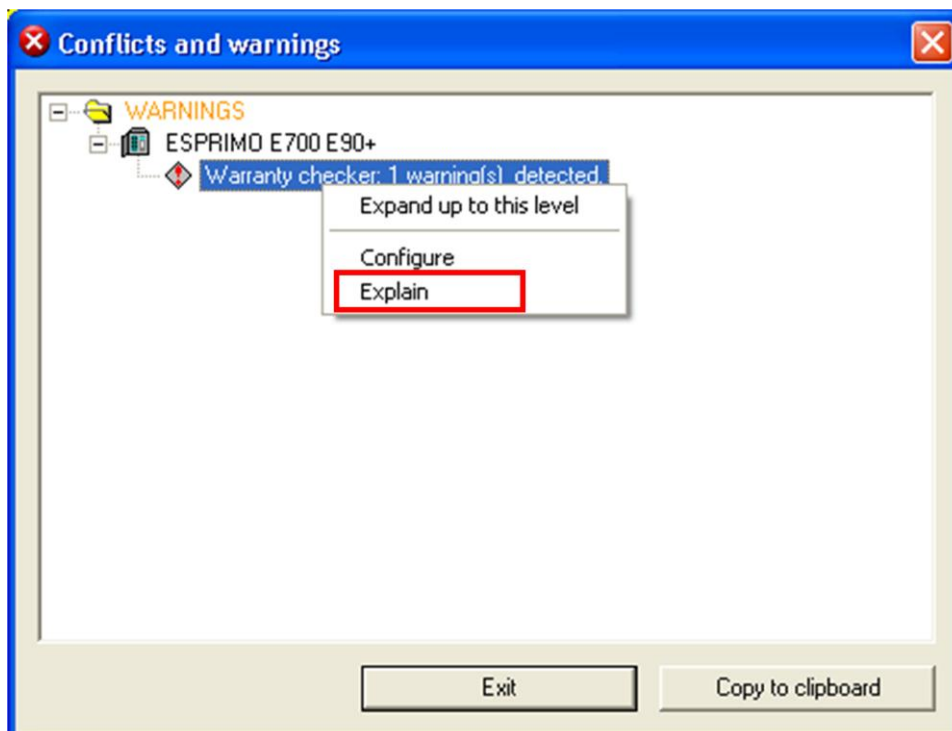
Regardless of this a 'Recommended warranty extension' was defined in the background for almost every system, which could be added in the Service Assistant by means of a simple mouse click.

In the new version 9.2 this 'Recommended warranty extension' is added directly during system selection if it was centrally defined for the selected system. An appropriate message then appears, because the warranty extension is a component with costs.



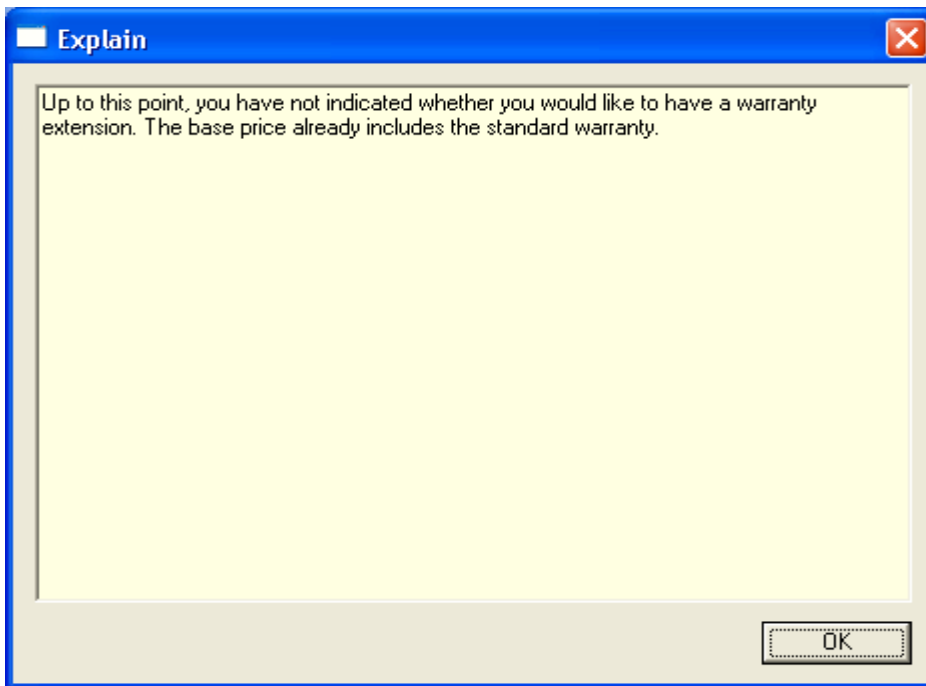
Due to this automatic addition the system is already linked with a suitable service product and no warning of the warranty check appears, either.

However, it is still possible for the initially added warranty extension to be deleted as a component. In this case, the known warning appears during the check.

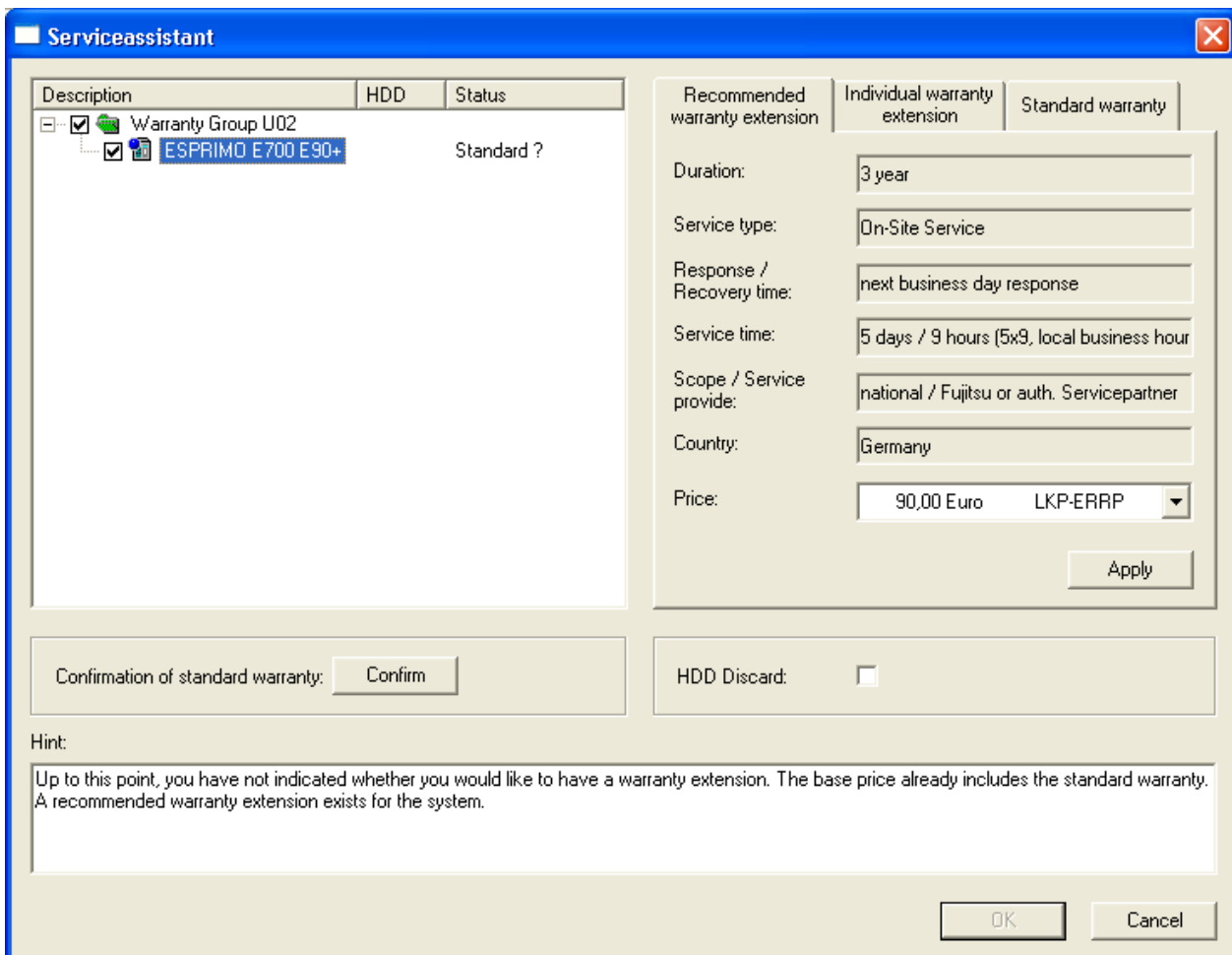


Continuation: Automatically added, recommended warranty extensions

The known warning text appears when the context function 'Explain' is selected.



The selection 'Configure' from the context menu of the warning or the direct starting of the Service Assistant provides the option of selecting a different 'Individual warranty extension' or the standard warranty for the appropriate system.



Continuation: Automatically added, recommended warranty extensions

The sequence of the tabs in the Service Assistant is new. The underlying recommended warranty extension is displayed first, then the selection option for a - mostly higher-value - individual warranty extension and then the standard warranty.

The warranty types are selected in the same way as before!

Special attention should be paid to mandatory warranty extensions

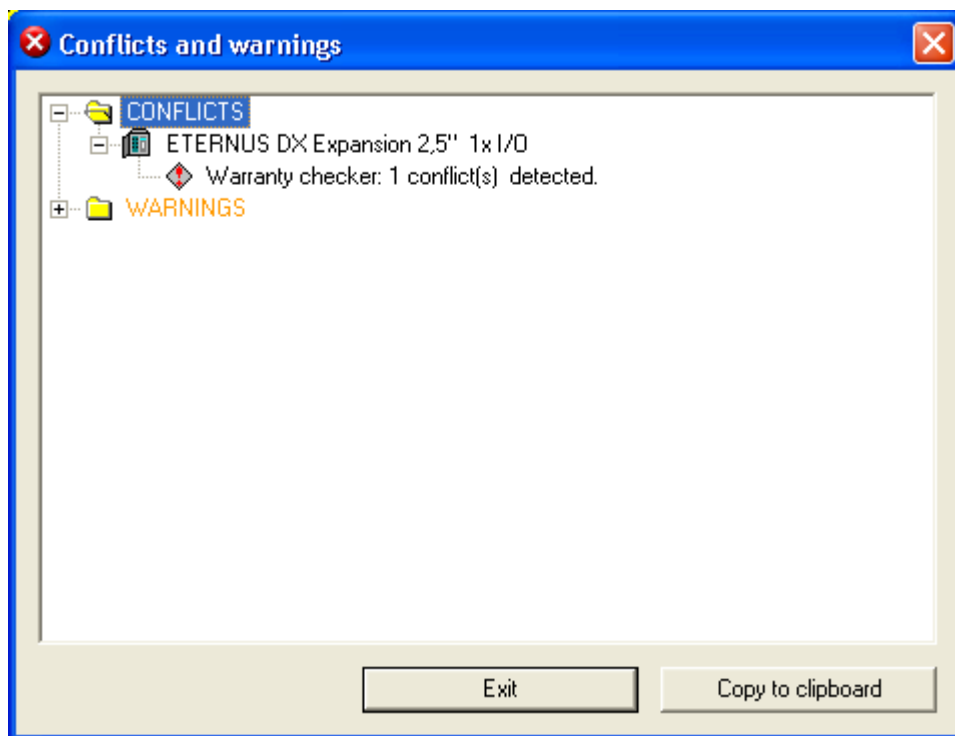
It is possible to add a recommended warranty extension for specific systems, which however cannot be deactivated by the selection 'Standard warranty'. When the Service Assistant is started this is separately marked.

The screenshot shows the 'Serviceassistant' window with a tree view on the left and configuration fields on the right. The tree view shows a 'Warranty Group F23' containing 'ETERNUS DX Expa...' with a 'Mandatory' status. The right panel has three tabs: 'Recommended warranty extension', 'Individual warranty extension', and 'Standard warranty'. The 'Standard warranty' tab is selected and highlighted with a red box. Below the tabs are fields for Duration (3 year), Service type (On-Site Service), Response / Recovery time (next business day response), Service time (5 days / 9 hours (5x9, local business hour)), Scope / Service provide (national / Fujitsu or auth. Servicepartner), Country (Germany), and Price (945,00 Euro, LKP-ERRP). There is an 'Apply' button. At the bottom, there is a 'Confirmation of standard warranty:' section with a 'Confirm' button and an 'HDD Discard:' checkbox. A 'Hint' box at the bottom states: 'Mandatory warranty extension is selected: 'TP 3y OS Svc,NBD Rt,5x9'. You can select an individual Extension instead. Selection of >Standard< is not possible.'

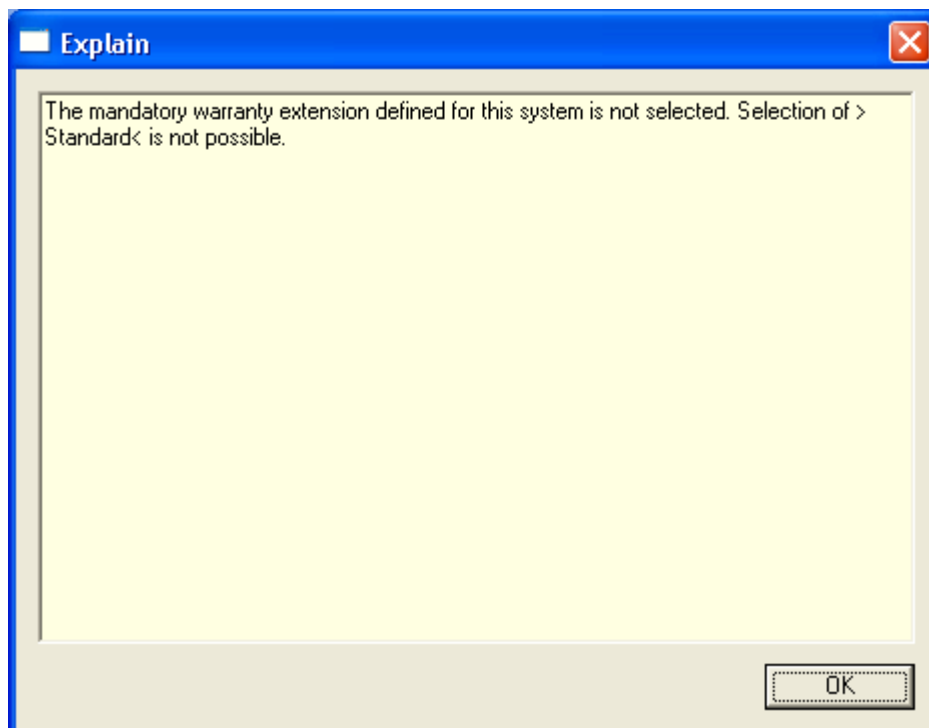
The selection of an individual warranty extension is possible - but the 'Standard warranty' tab cannot be selected.

Continuation: Automatically added, recommended warranty extensions

If the user deletes the service for this system, e.g. via the configuration view, a conflict appears.

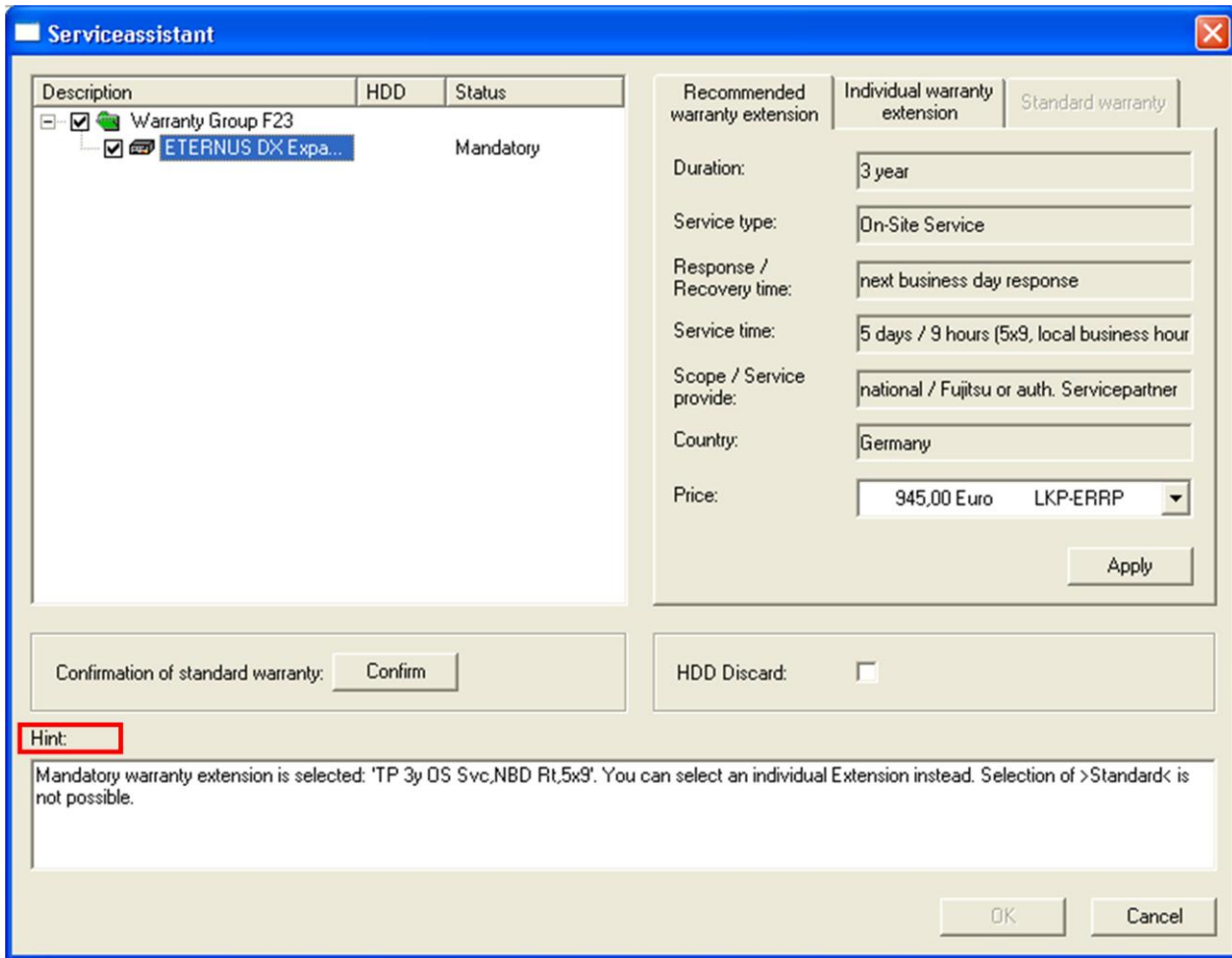


The context function 'Explain' provides the corresponding cause:



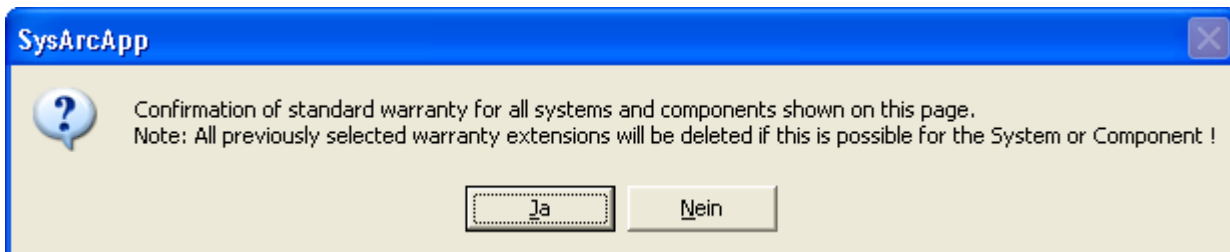
Continuation: Automatically added, recommended warranty extensions

When the Service Assistant is started, the mandatory warranty extension is again automatically added. An appropriate hint also appears in the lower section of the window.



Changes in the selection 'Confirmation of standard warranty'

The positioning of this special button often led to operating errors in previous versions, which is why the dialog has now been moved to another position and provided with an additional security prompt.



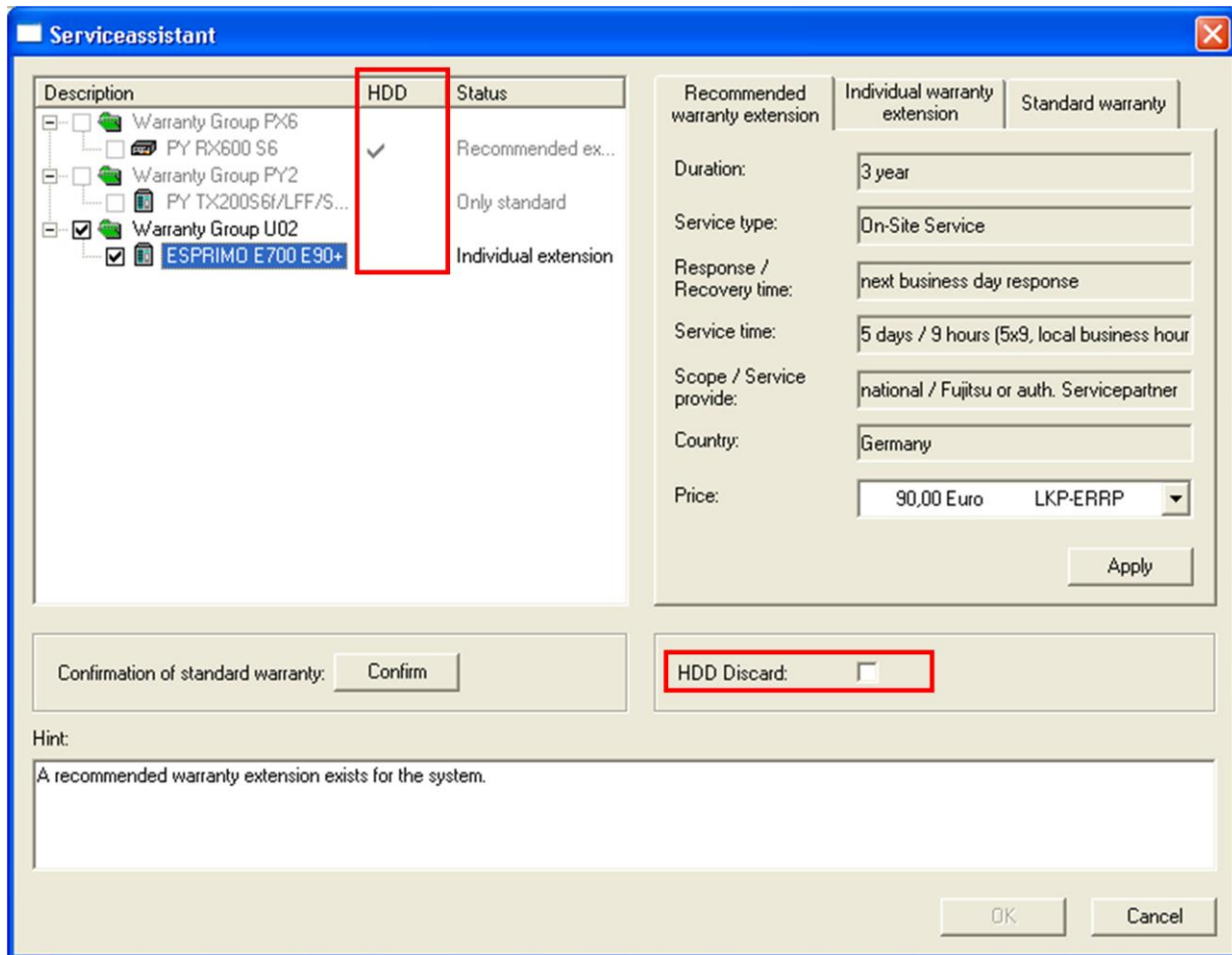
The standard warranty is only activated for all the systems shown in the Service Assistant after confirmation with 'Yes'. Except for the previously mentioned systems with an mandatory extension. The selected warranty extensions remain unchanged here.

Continuation: Automatically added, recommended warranty extensions

Extension of the Service Assistant for HDD Discard

The new version of the Service Assistant can also be used to select the additional service 'HDD Discard' directly here. Previously, this service could only be selected in the configuration view.

Activation of HDD Discard is done independently of the selected warranty type (standard, recommended or individual) by simply clicking on the activation button.



The 'HDD' column provides an overview of the systems in which the option 'HDD Discard' is activated.

Reintroduction of global components

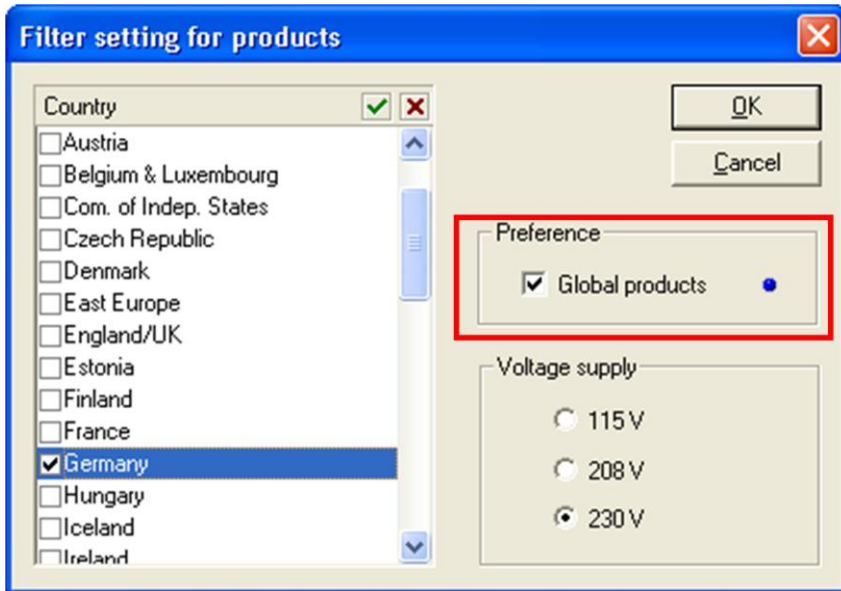
Introduction

The selection of global components in a configuration is intended to show the user that the selected components are available throughout the world and are not subject to any regional restrictions.

As this function is not of relevance for all users, it is only activated through specific attributes.

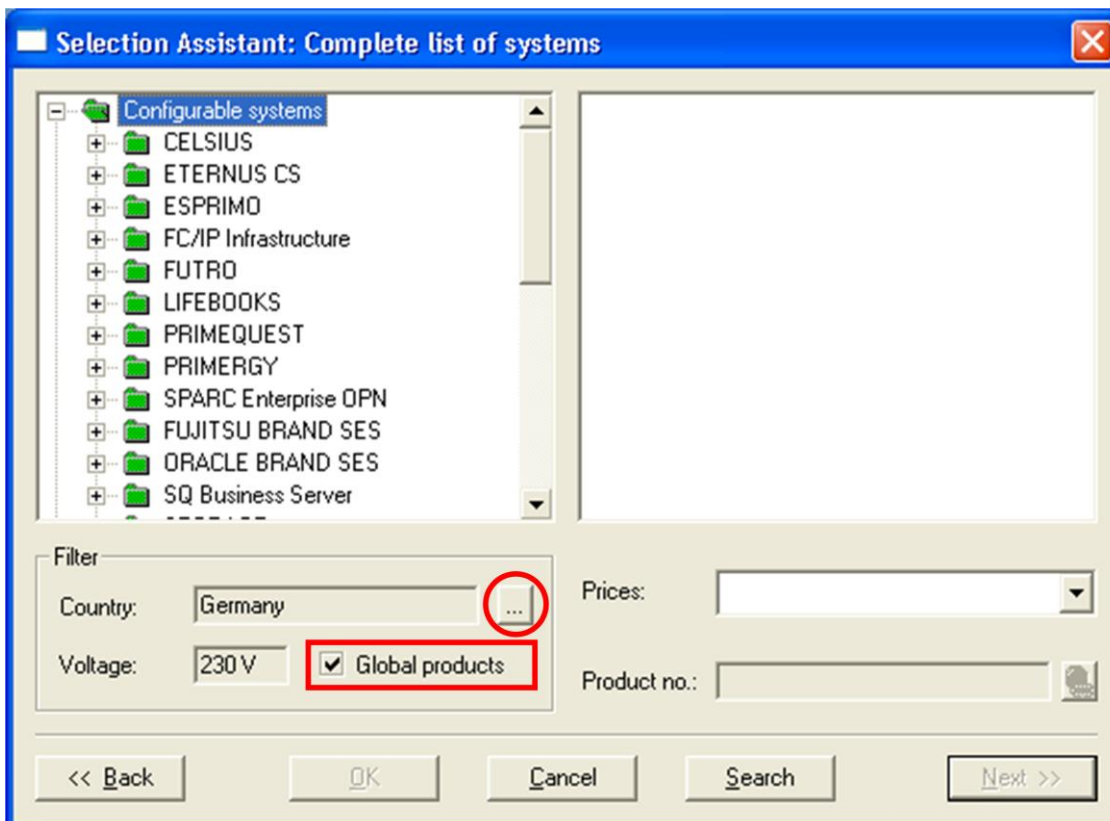
Activation

A new attribute has been implemented in the menu 'Options - Filter settings', which takes over the control for the creation of global configurations.



This attribute is inherited by every newly created configuration and can then also be changed here individually without having to change the basic setting in the menu 'Options - Filter settings'. This procedure is also valid for other parameters, such as Voltage supply, Number of phases, Available house connections, etc...

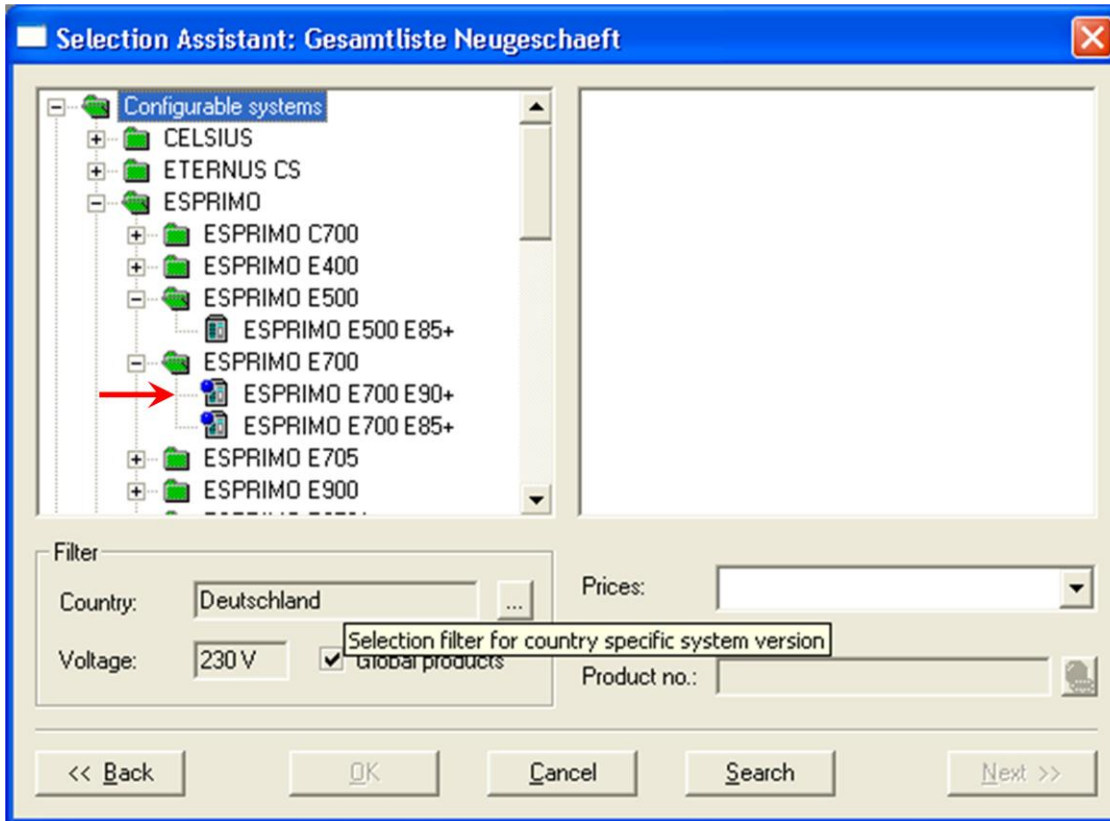
As the menu 'Options' cannot be directly accessed in PC-Architect after the start, the display of the current settings has been extended in System Selection (as last saved in the menu 'Options').



In order to change the settings the user has to click on the button marked with the circle. The change is immediately saved.

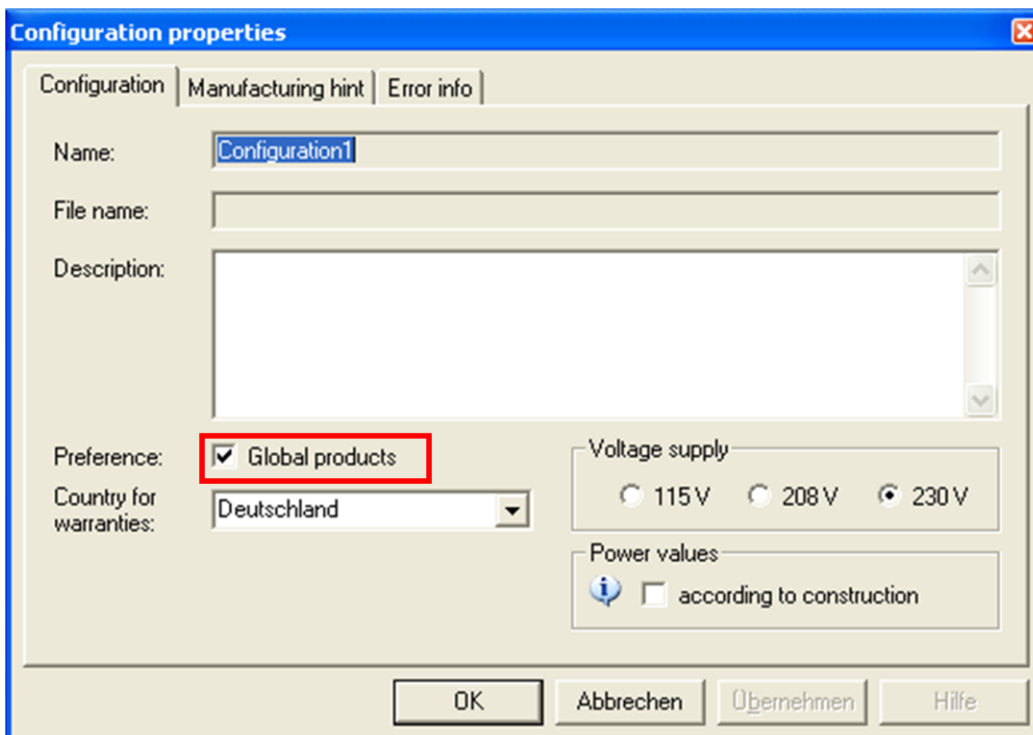
Continuation: Reintroduction of global components

Activation of the option 'Global products' is not only inherited by every newly created configuration, it also changes the display in the system selection tree. If successfully activated, global systems are indicated with a small blue globe in order to make selection easier.



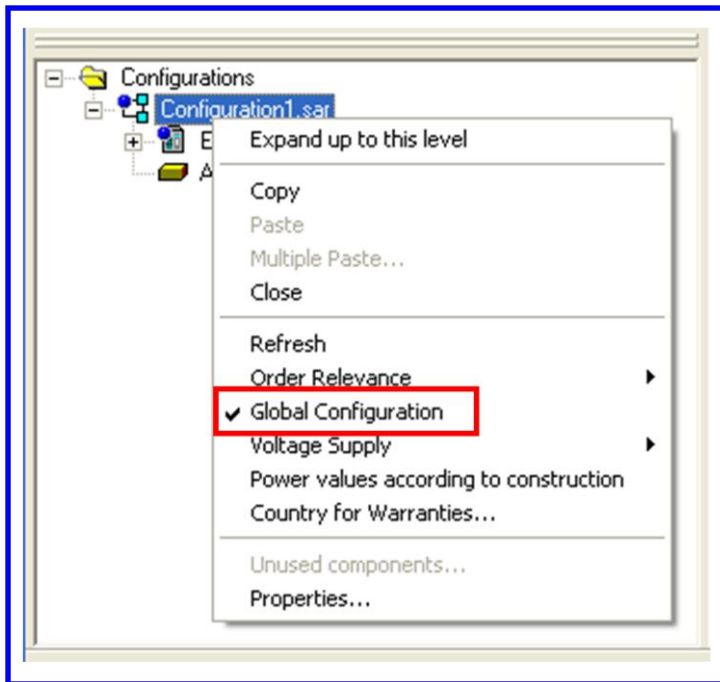
Global configuration

The attribute of the configuration itself is derived from the menu option 'File - Configuration properties', or can be changed here, regardless of the settings in the options menu.



Continuation: Reintroduction of global components

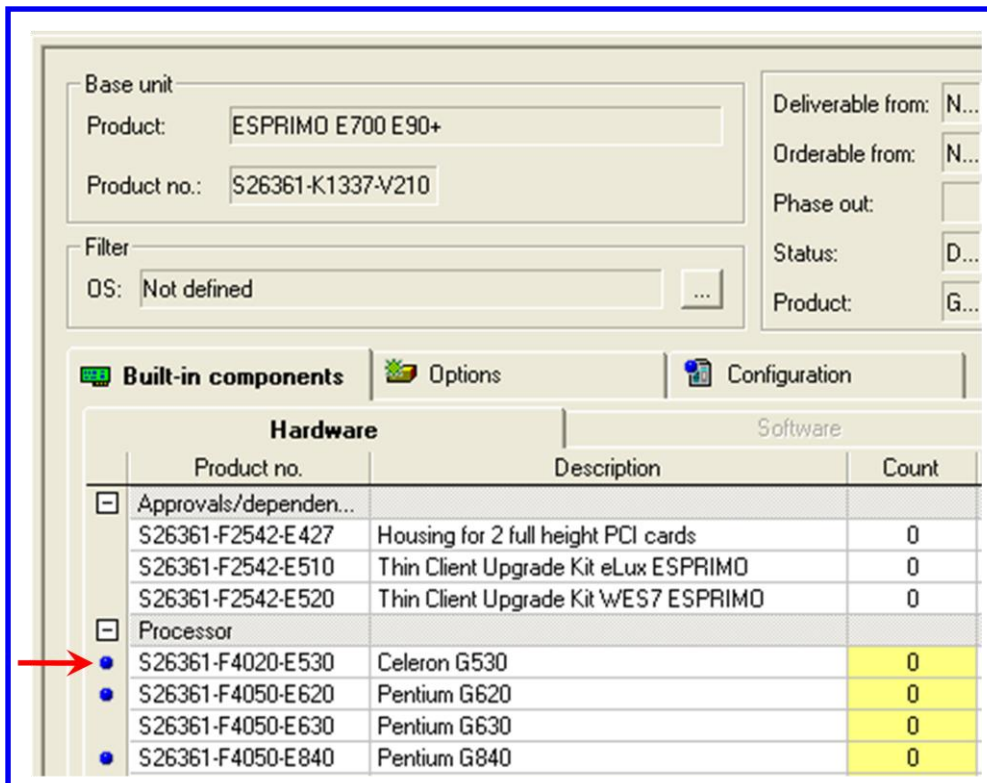
The attribute can also be changed in the SystemArchitect by means of a separate context menu function in the configuration. The attribute is changed by clicking on the menu item.



A configuration that is marked as a global configuration also receives a small blue globe in the icon (see figure above)

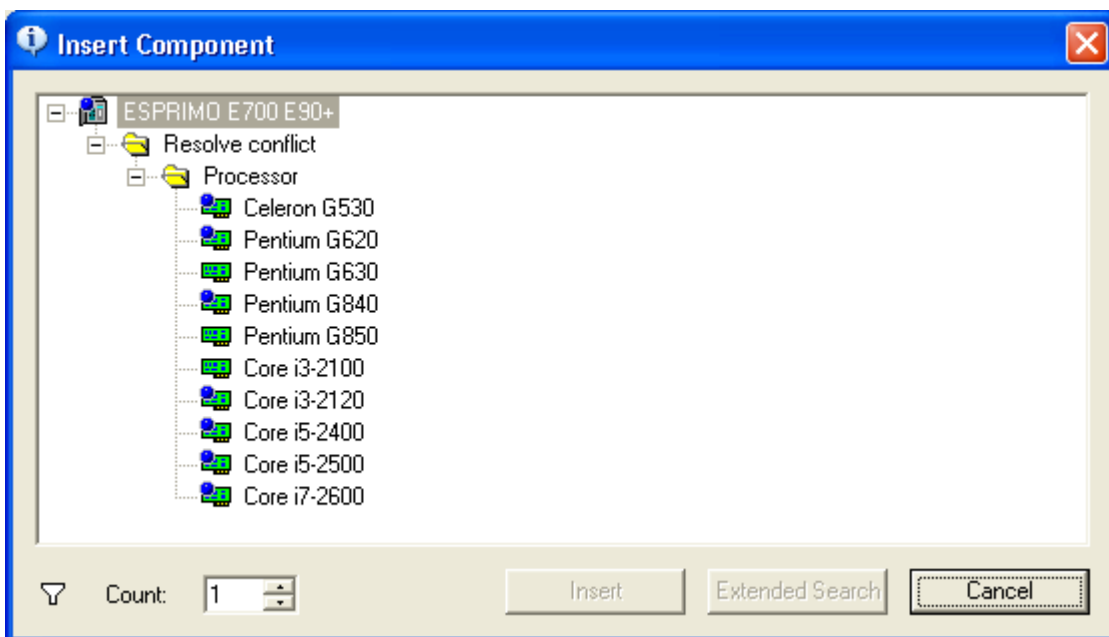
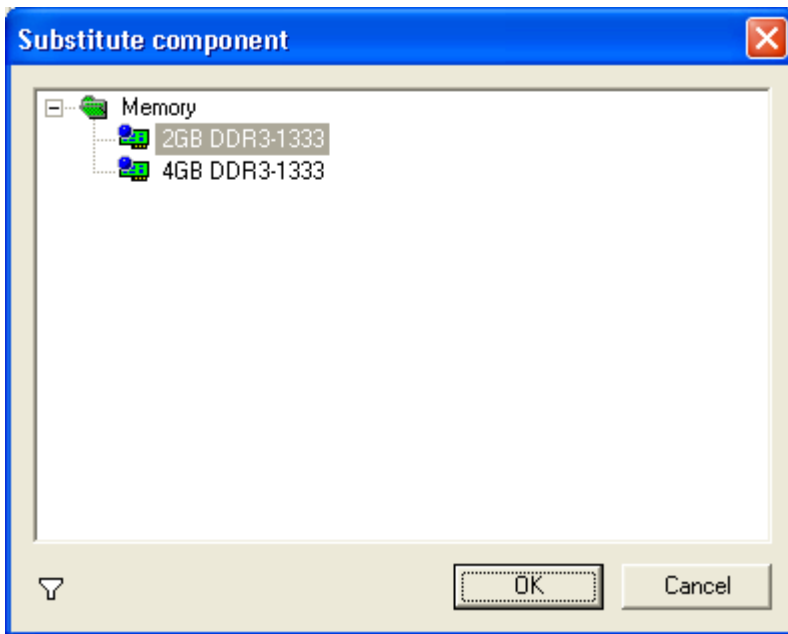
Impacts of a global configuration

As soon as a global configuration has been created or opened, all the global components are also indicated with a small blue globe in the configuration view in order to simplify the selection of global components for the user.



Continuation: Reintroduction of global components

The same applies for the display with the function 'Replace' or with 'Conflict solving via configure'



The display of global components with 'Replace' and 'Conflict solving via configure' also occurs if the attribute 'Global products' is activated in the menu 'Options - Filter settings' and none of the currently opened configurations is marked as global.

Continuation: Reintroduction of global components

Checking of a global configuration

If a globally available system is included in a global configuration, but is configured with at least one component that is not globally available, an appropriate warning is issued when the configuration is checked.

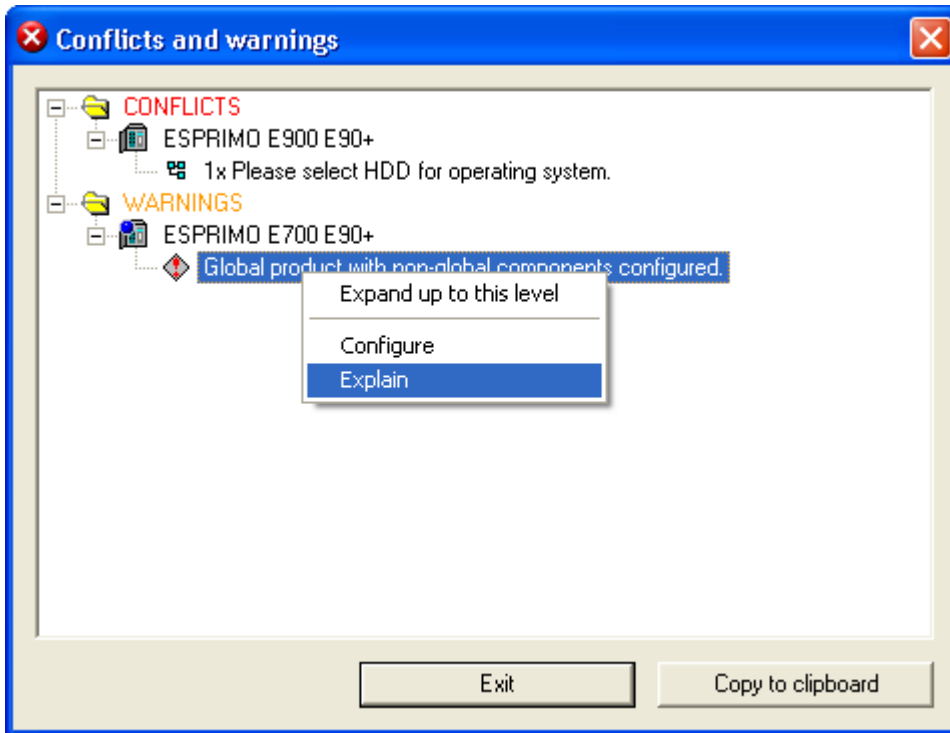
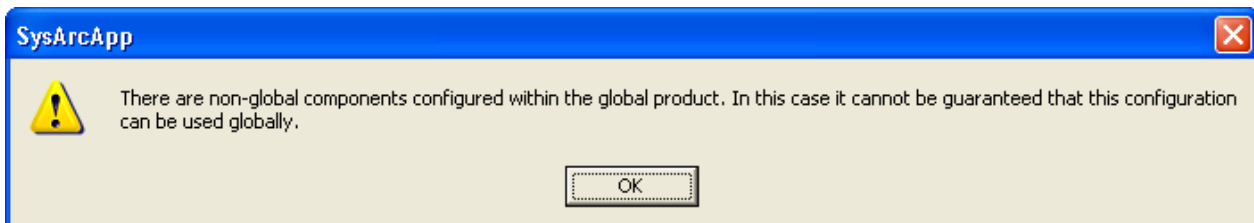


Figure above: The (global) configuration contains a global system and a non-global system (can be recognized by the small blue globe on the system icon). The check only examines global systems! By clicking on the function 'Explain' the user receives further-reaching information.



The HELP file contains additional information and explanations about global components.

Changed configuration of the storage modes for PRIMERGY

Introduction

The possible various operating modes of the main memory for PRIMERGY (Independent, Spare, Performance or Mirror-Mode) have for some time now been derived from the different order numbers of the memory modules, although the modules themselves can be run in various operating modes. Different BIOS settings, which are currently linked with the order number of the memory module, are actually used to make the distinction.

In order not to further increase the number of required order numbers for memory modules in future the new version of PC and SystemArchitect configures the operating mode autonomously and to begin with independently of the required memory modules. A new test routine monitors the number and type of selected memory modules depending on the - ideally initially selected - operating mode.

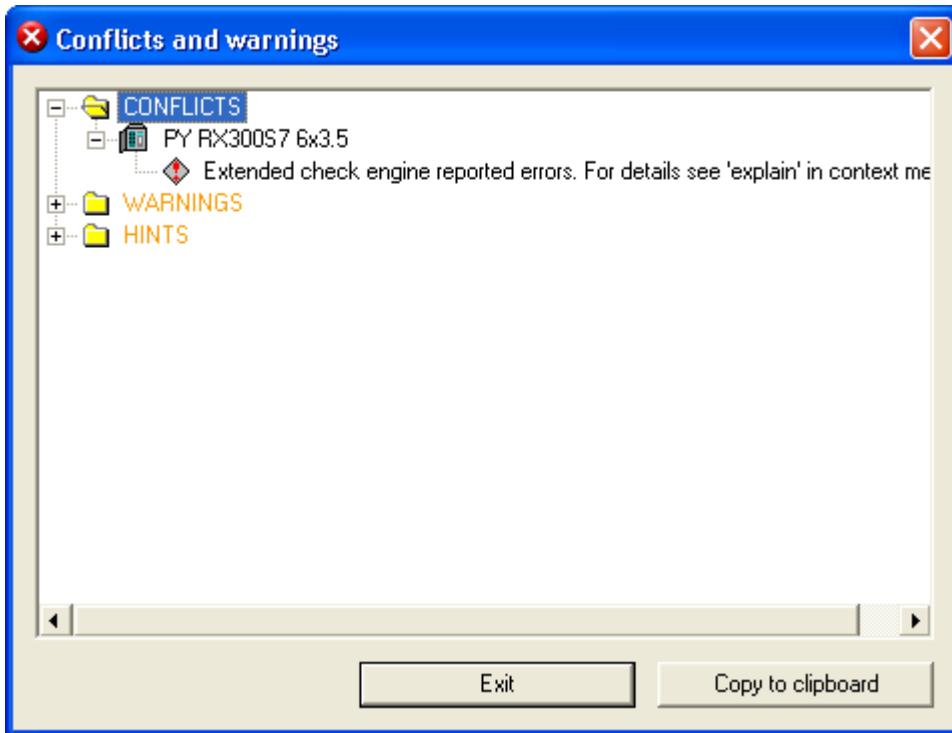
Hardware			Software
Product no.	Description	Count	
S26361-F3687-E290	Intel Xeon E5-2667 6C/12T 2.90 GHz 15 MB	0	
S26361-F3688-E200	Intel Xeon E5-2630L 6C/12T 2.00GHz 15MB	0	
S26361-F3688-E180	Intel Xeon E5-2650L 8C/16T 1.80GHz 20MB	1	
<input checked="" type="checkbox"/> Memory Modules	Independent Mode		
S26361-F3694-E10	Independent Mode Installation	0	
S26361-F3694-E2	Performance Mode Installation	0	
S26361-F3694-E1	Rank Sparing Mode Installation	0	
S26361-F3694-E3	Mirrored Channel Mode Installation	0	
S26361-F3694-E513	2 GB DDR3 UB ECC LV 1333 MHz PC3-10600 1	0	
S26361-F3694-E514	4 GB DDR3 UB ECC LV 1333 MHz PC3-10600 2	0	
S26361-F3695-E514	4 GB DDR3 UB ECC 1600 MHz PC3-12800 2R	0	
S26361-F3696-E514	4 GB DDR3 RG LV 1333 MHz PC3-10600 1R	0	
S26361-F3696-E515	8 GB DDR3 RG LV 1333 MHz PC3-10600 2R	0	
S26361-F3696-E516	16 GB DDR3 RG LV 1066 MHz PC3-8500 4R	0	
S26361-F3697-E514	4 GB DDR3 RG LV 1600 MHz PC3-12800 1R	0	
S26361-F3697-E515	8 GB DDR3 RG LV 1600 MHz PC3-12800 2R	0	
S26361-F3697-E516	16 GB DDR3 RG LV 1600 MHz PC3-12800 2R	0	
S26361-F3698-E516	16 GB DDR3 LR LV 1333 MHz PC3-10600 4R	0	
S26361-F3698-E517	32 GB DDR3 LR LV 1333 MHz PC3-10600 4R	0	
<input checked="" type="checkbox"/> Graphics			

After selection of an operating mode unusable memory modules are disabled (gray field in column 'Count')

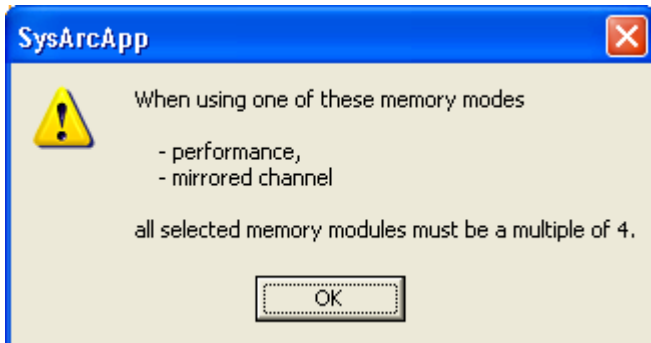
Memory Modules	Independent Mode	Count
S26361-F3694-E10	Independent Mode Installation	0
S26361-F3694-E2	Performance Mode Installation	0
S26361-F3694-E1	Rank Sparing Mode Installation	0
S26361-F3694-E3	Mirrored Channel Mode Installation	1
S26361-F3694-E513	2 GB DDR3 UB ECC LV 1333 MHz PC3-10600 1	0
S26361-F3694-E514	4 GB DDR3 UB ECC LV 1333 MHz PC3-10600 2	0
S26361-F3695-E514	4 GB DDR3 UB ECC 1600 MHz PC3-12800 2R	0
S26361-F3696-E514	4 GB DDR3 RG LV 1333 MHz PC3-10600 1R	0
S26361-F3696-E515	8 GB DDR3 RG LV 1333 MHz PC3-10600 2R	0
S26361-F3696-E516	16 GB DDR3 RG LV 1066 MHz PC3-8500 4R	0
S26361-F3697-E514	4 GB DDR3 RG LV 1600 MHz PC3-12800 1R	0

Continuation: Changed configuration of the storage modes for PRIMERGY

Minimum and maximum quantities as regards the memory modules are also checked.



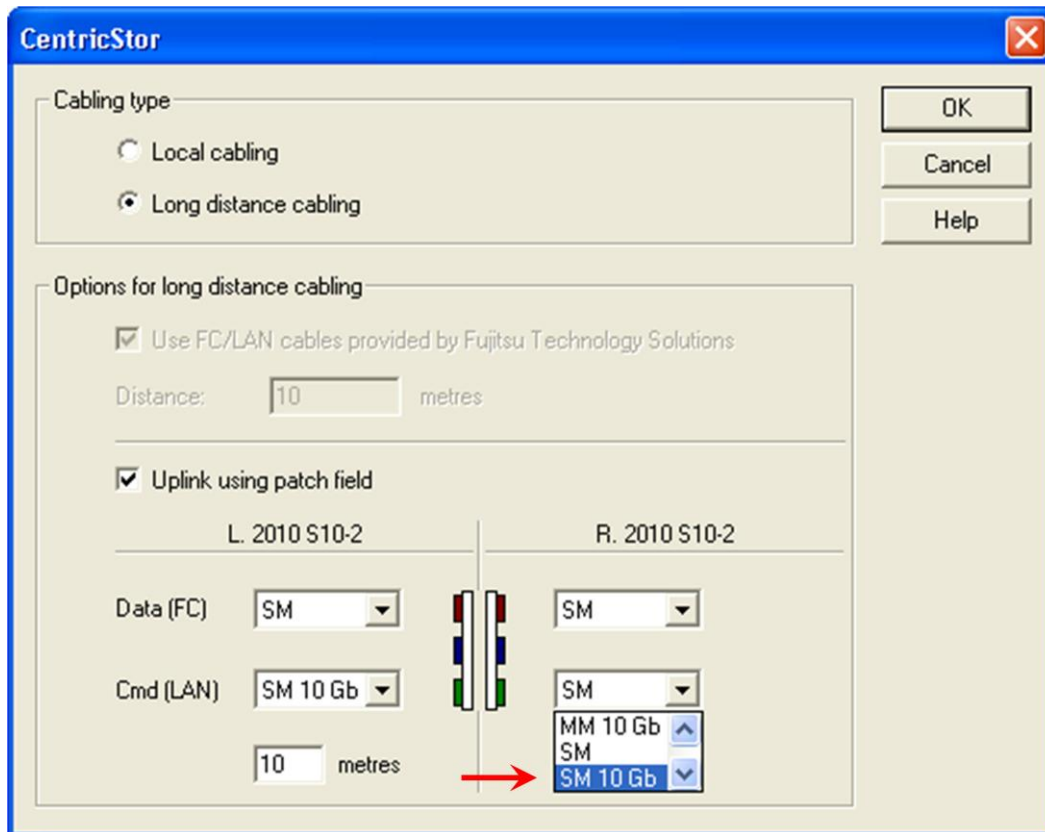
By calling the context menu function 'Explain' the following text appears, which explains the exact cause of the error to the user.



New parameters in the ETERNUS CS LAN/FC Assistant

The LAN/FC Assistant that is used for the complete automatic cabling in ETERNUS-CS systems has been extended to include another parameter.

If you select the cabling option 'Long distance cabling using patch field', it is possible with the new version to select the transfer speed for the CMD-ETHERNET connection between 1Gb and 10Gb.



Depending on this option the required LAN and FC components are selected by the assistant and incorporated in the configuration. The release of the required components for 10Gb cabling takes place - regardless of the approval for release 9.2 - later.

Various minor changes

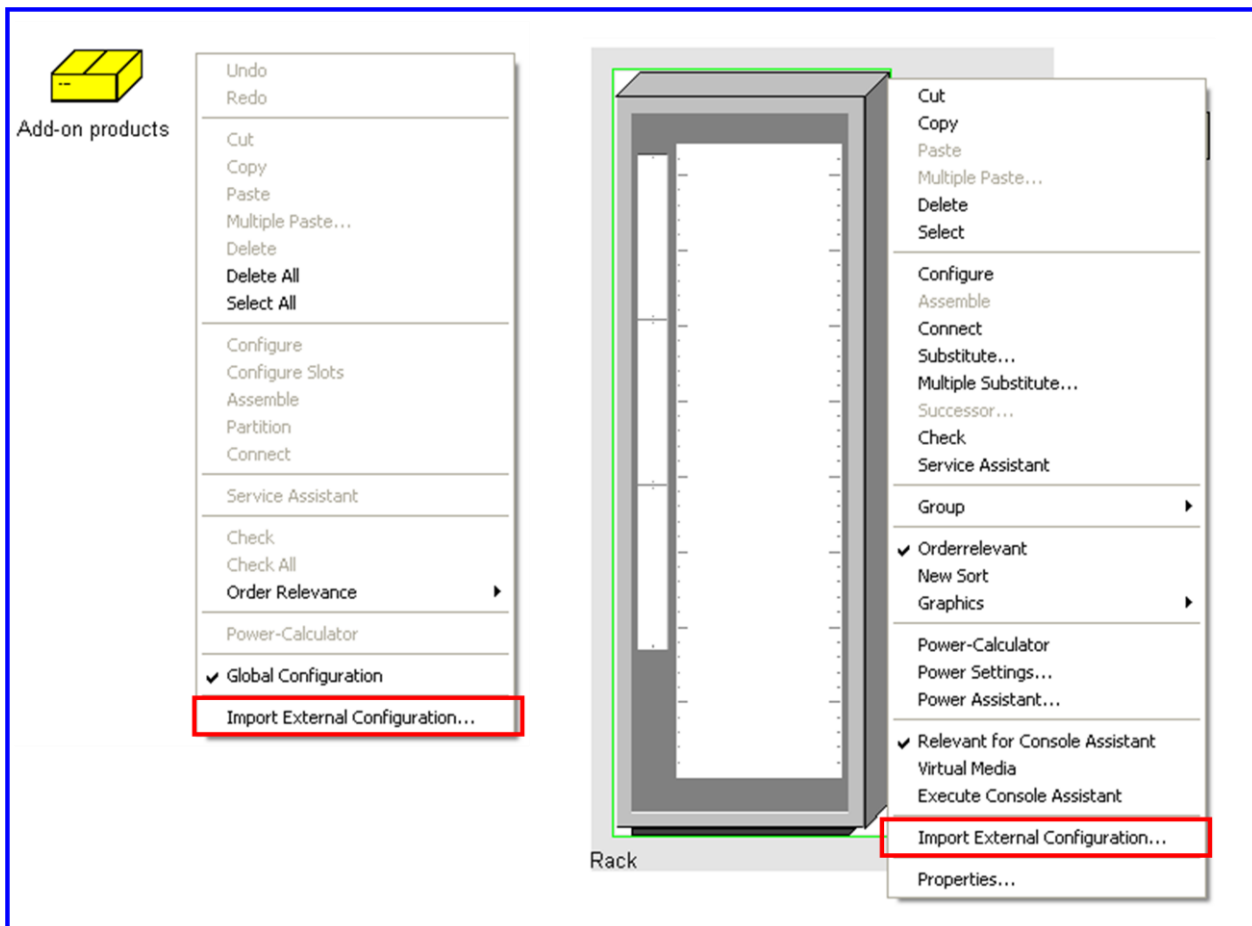
SAI Import

The import interface in the SystemArchitect has been updated. Consequently, it is now possible to import configuration files, which were created with the WebArchitect, into a configuration of the SystemArchitect (SAR file). For this purpose, the configuration of the WebArchitect must be saved as an SAI file.

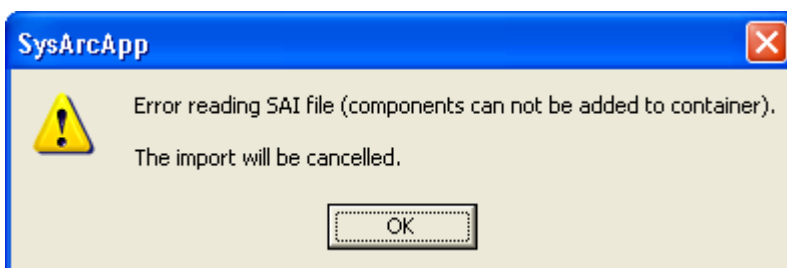
In the past the import interface was only used for external configuration assistants, which were mostly started as an EXCEL application from the SystemArchitect (menu 'Assistants').

Import is done using a context menu function:

- on the standard work interface for components that are to be integrated as a TOP level object (e.g. floorstand systems)
- or for a rack if the components to be imported are to be added directly into the rack that exists in the configuration (e.g. rack servers, switches, etc...)



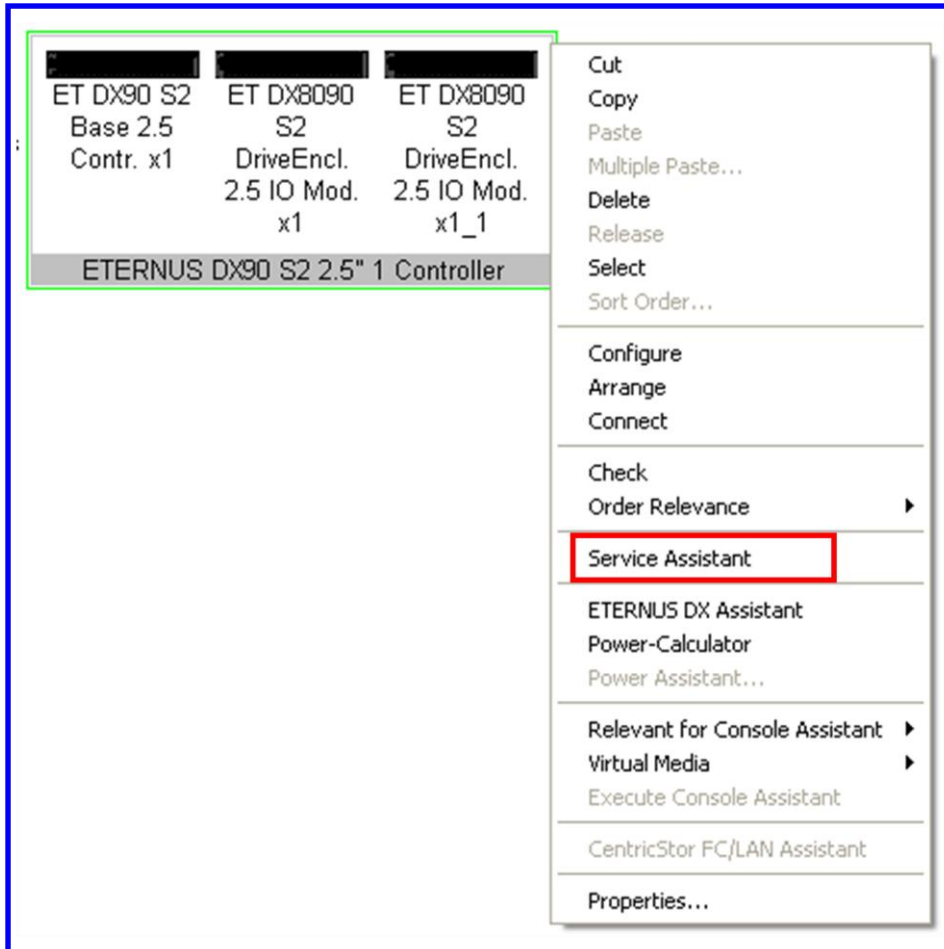
A check of the components to be imported takes place in any case and, if necessary results in an error message



Cont.: Various minor changes

Service Assistant can be started in a group

In future, it will be possible to start the Service Assistant in a group so that all the components of the group can be processed in one dialog.



Extension of the ETERNUS DX Assistant

The assistant has been adapted and extended for the new system 'DX8700 S2'. The appropriate regulations are mapped in the SystemArchitect and can also be viewed in the appropriate system literature and documentation.

For further Information:

German/English (Extranet): <https://partners.ts.fujitsu.com/configurators>

German (Internet): <http://configurator.ts.fujitsu.com/public/>

English (Internet): http://configurator.ts.fujitsu.com/public/public_en/

Training offer

Training programs are offered on the topic of 'Configuration Tools' and can be adapted to meet the needs of the individual participant group.

Course objectives: Provide a functional and performance overview
Create simple and complex configurations
Provide practical experience of tool handling through exercises

Target group: Specialist consultants & sales employees (with and without tool know-how), who have the corresponding product knowledge

Language: German and English

Duration: 3 hours to 2 days (depending on individual needs)

Possible topics: Selection of systems, accessories and upgrade components
Configure individual systems
Configure racks and rack modules
Configure service products
Handling offer packages
Special functions for PRIMERGY, PRIMEQUEST, und Eternus / Eternus CS
External cabling / Handling the cabling wizard
Plausibility check
Create and use configuration templates
Import and export functions

Contact: christian.buechner@ts.fujitsu.com