

INFORM

New version 8.4 **PC and SystemArchitect** Planned release 21. September '09

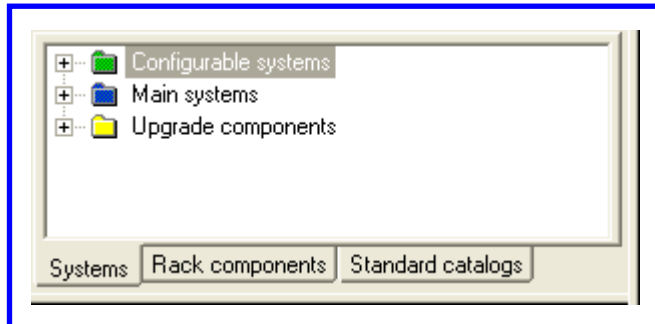
Issue	Sep 2009
Category	PC / SystemArchitect
Content	Tool Change
Distribution	External / Internal
Pages	13

Overview of the new functions / **Benefits for the user**

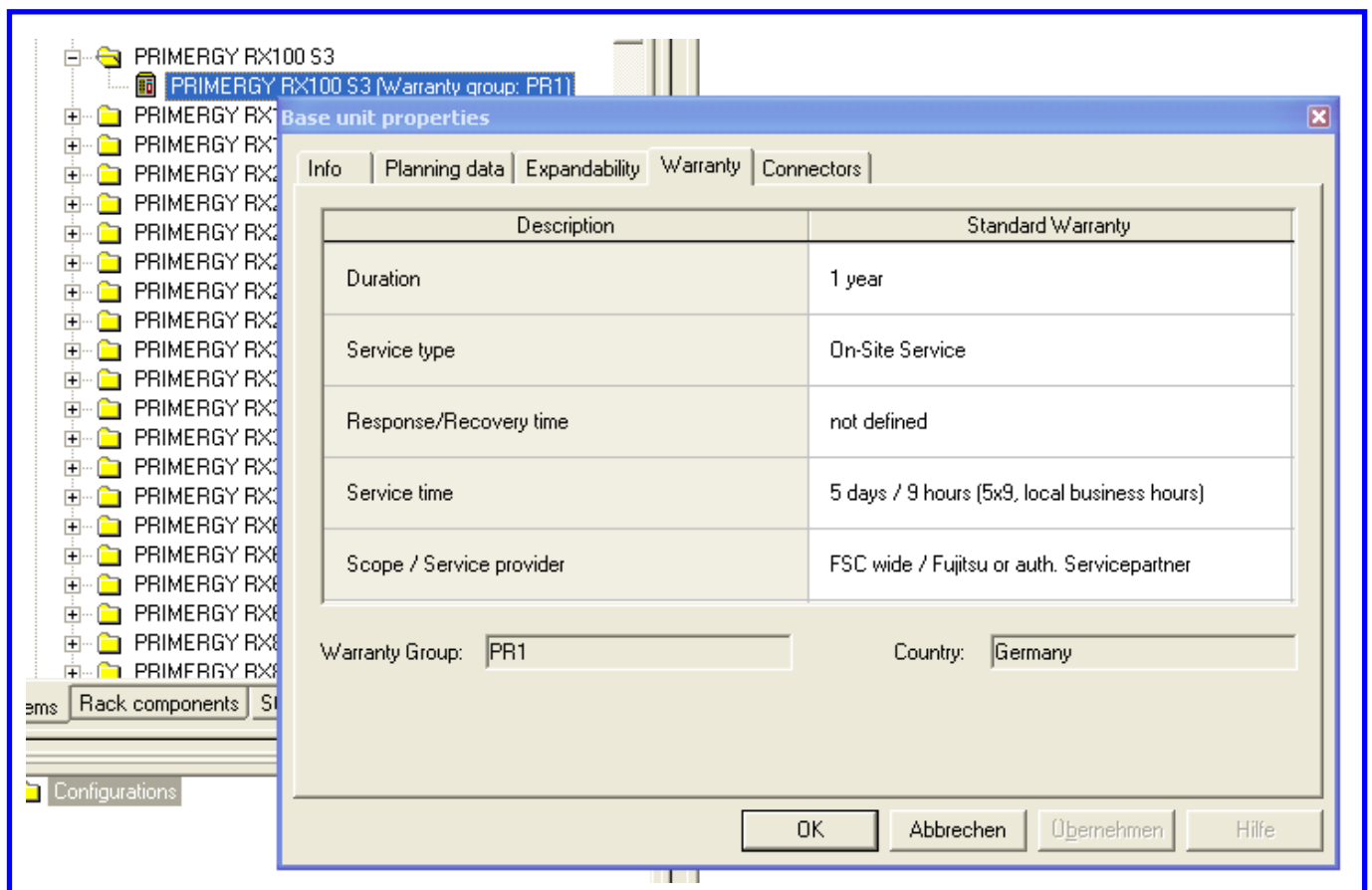
- **Service Assistant also for upgrade business**
Improved operation; avoid incorrect orders
- **Extensions in the environment of the FC/LAN Assistant for CentricStor**
Function extension;
- **Extensions in the environment of groups**
Function extension; improved operation; avoid incorrect orders
- **Extensions of the Power Assistant**
Function extension; improved operation
- **Functional link to MatrixEP (part 1)**
Better use of information from MatrixEP
- **Many minor extensions**
More information; simplified operation; error prevention

Service Assistant also for upgrade business

The ServiceAssistant could be started for configurable systems (BTO, marked green in PCA/SA) and complete systems (marked blue in PCA/SA). The new version 8.4 now provides this functionality for the upgrade components (marked yellow in PCA/SA). In this situation a warranty extension type 'ServicePack' is always added.



A so-called "upgrade component" acts like a non-order relevant system yet the order relevance can not be modified. In addition, the check regarding any possibly required warranty extension no longer applies; the standard warranty applies implicitly for upgrade components as shown on the corresponding tab in the properties dialog.



This has also resulted in a further function which enables the Service Assistant to be started for non-order relevant configurable and complete systems.

- The functionality of the Service Assistant is unchanged for complete systems
- In this situation ServicePacks instead of TopUps are added by the Assistant for configurable systems
- An order-relevant warranty extension type 'TopUp' in a non order-relevant configurable system results in an inconsistent configuration

Symbol	Product no.	Description	Count	LKP-ERR...	Status
	S26361-K1267-V101	PY TX300S5f standard fans	1	0,00	
	S26361-F3277-E186	Intel® Xeon® E5502 2C/2T 1.86 ...	1	0,00	
	S26361-F3284-E513	2GB DDR3-1066 PC3-8500 rg ECC	1	0,00	
	S26361-F3266-E2	DVD-ROM 1.6" SATA	1	0,00	
	S26361-F3257-E8	RAID 0/1 SAS based on LSI Meg...	1	0,00	
	T26139-Y1740-E10	Cable powercord (D...), 1.8m, grey	1	0,00	
	FSP:GP3S60Z00DEPY3	TP 3y OS Svc.4h Rt.5x9	1	450,00	
				450,00	

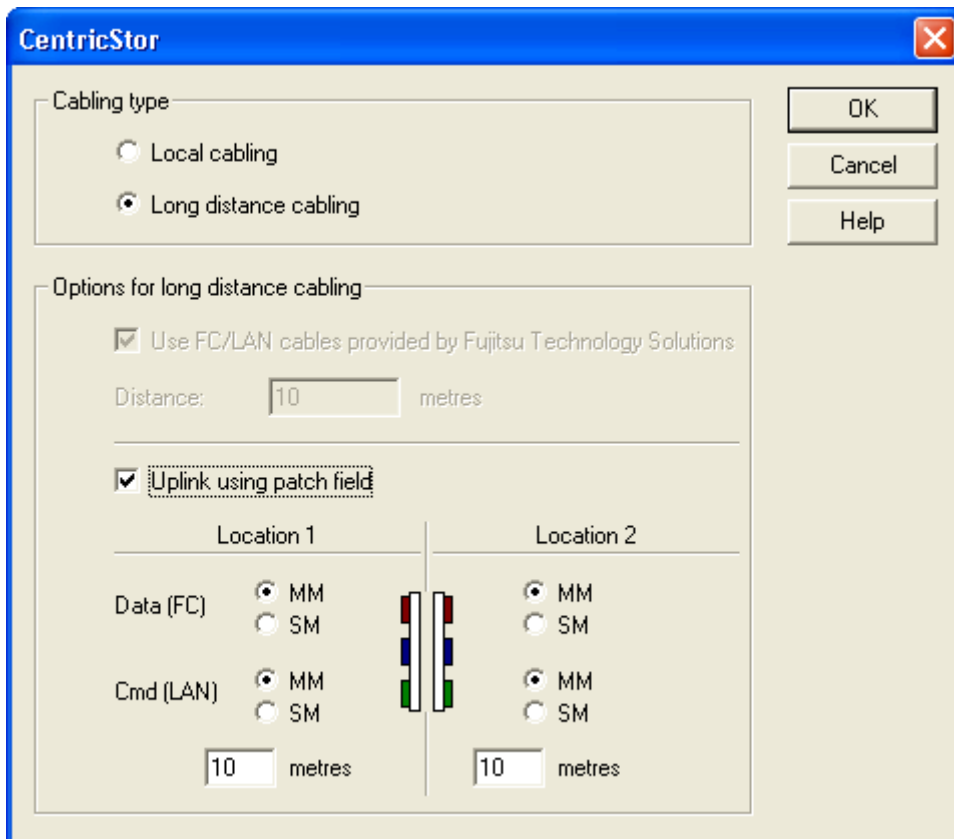
Extensions in the environment of the FC/LAN Assistant for CentricStor

Introduction

The FC/LAN Assistant is available in the SystemArchitect only for grouped racks from the family of *CentricStor* systems. It supports the user when implementing the required data cabling. The groups represent the different locations of the racks in order to visualize distributed data storage.

New functions in the selection dialog

Having selected the 2 groups the user is asked for additional parameters in a newly designed dialog which are essential for the correct implementation and component selection via the cable assistant:



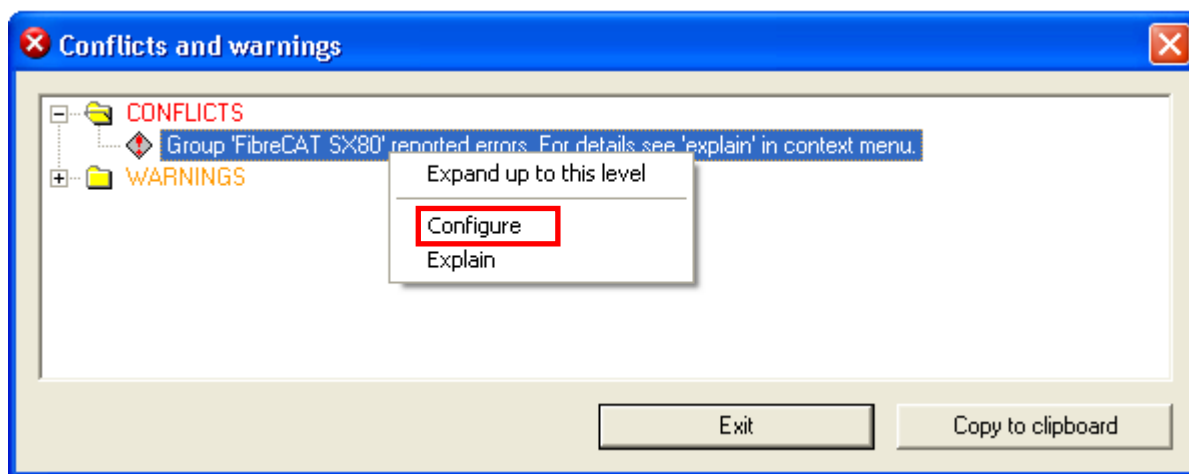
The type of cabling is defined in the top section. The new feature is that there are some packages which are implicitly not designed for local cabling. In this situation, the selection option is greyed and only the long-distance cabling option is available. Should long-distance cabling be selected, more options must be entered in the bottom section of the dialog mask.

- For a short distance (e.g. within the same building) the required cable length must be entered. In this situation, the switches are directly linked to each other in the various racks
- The bottom option must be selected for a required cabling via patch panels. In this situation:
 - If an artificial (virtual) component is added to the configuration which simulates a patch panel with the corresponding connection options
 - The user must define via the radio button the exact connection options for the patch panel
 - and specify the distance from the rack to the patch panel
 - All previously named settings must be made for both locations (they are named in the heading) in order to add the correct individual connection cables for each location for the respective patch panels of the configuration.

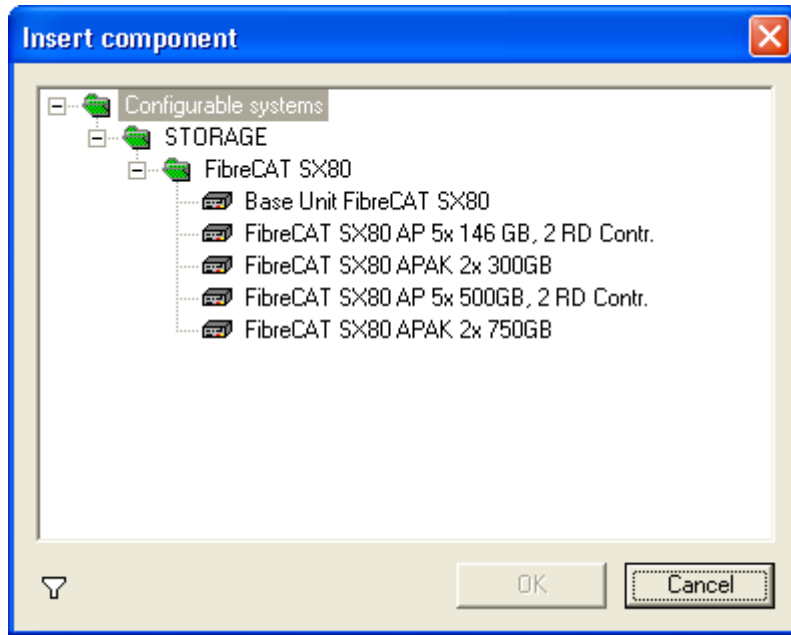
Extensions in the environment of extended groups (groups with regulations)

Improved support when checking groups

All compulsory required components of a group will in future be requested and can be added via the function "Configure" - this was previously only the case if the main component (initiator; base unit) was missing.



New in version 8.4 is the direct offer of the corresponding conflict solvers instead of a list of all the theoretically possible group participants

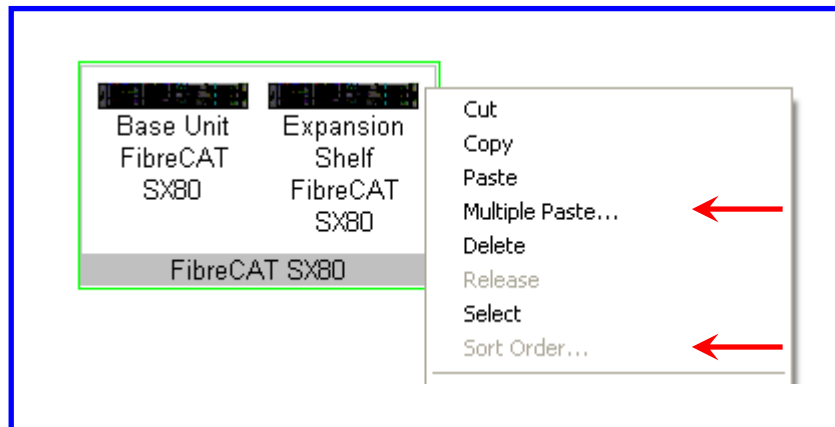


The inclusion of new components in groups is also monitored in an improved manner. An over-configuration of the group is thus detected at a very early stage and not carried out (prevent error).

Adapt the range of functions for groups (context menu)

The context function *sequence* via which the alignment of the group elements can be changed regarding the sequence will in future no longer be available for extended groups (shaded grey) as the positioning is an elementary part of the stored group rule.

The function *Multiple paste* has also been implemented for groups in order to enable the user of easily adding several identical components to the group.

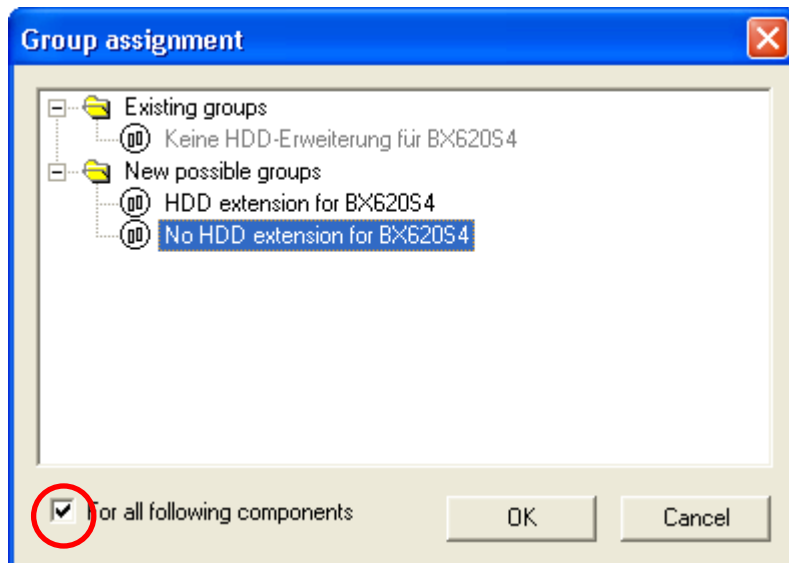


It is no longer permitted to detach individual group members from an existing group, or to assign to a group without rules via the function *Regroup*. Likewise, the *deletion* of an entire group is no longer possible.

Extensions of the function *Multiple paste*

An existing entire group can in future be added several times at another position. The names of the groups as well as those of the group components are automatically modified in order to enable the greatest possible user comfort.

With multiple paste of an individual component which is grouped, first of all, there is an inquiry about the type and name of the target group which is to be created when inserting. In this situation a checkbox in the dialog is available which controls the automatic creation (including automatic naming) of the additional groups.



If the option is not selected, the inquiry of the target group to be created is made for each of the components to be multiple pasted!

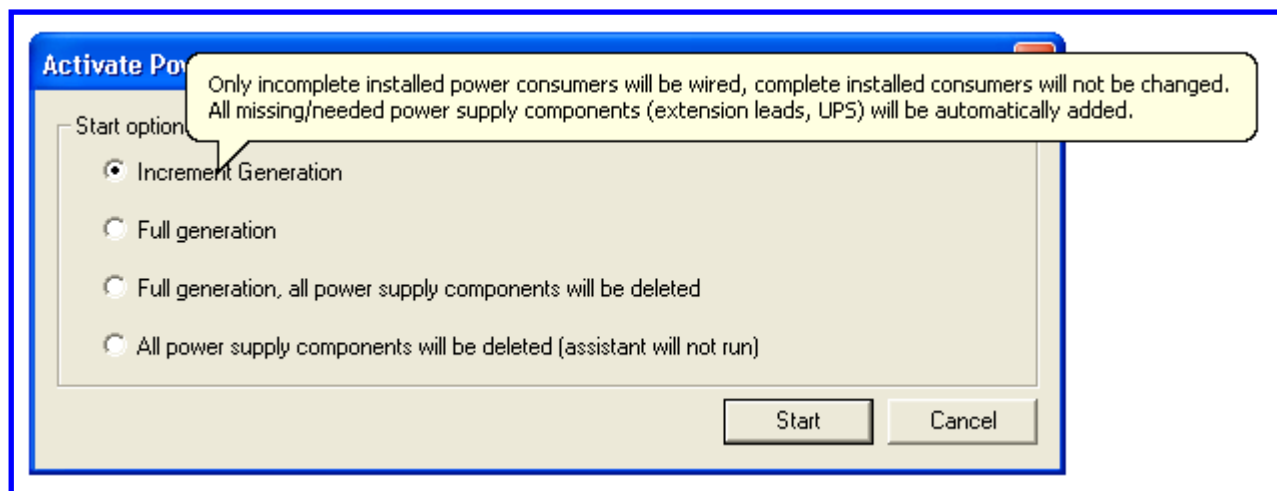
Extensions of the Power Assistant

The Power Assistant could be started in the past in two different modes: incremental or as new generation. A third and fourth start option has been implemented with version 8.4 of SystemArchitect.

The third option: all existing power components which have been added by any previously started Power Assistant (socket bars, UPSs) are first deleted before completely new cabling is automatically made by the Assistant (new generation). The deletion of the power components is general, even if they had been manually added by the user.

The fourth option deletes all the existing power components without any subsequent new cabling.

In future, there will be a prompt asking about the mode to be used so as to highlight these four different start options. Tool explanations provide support when making the selection as soon as the cursor runs over a selection option.



Functional link to MatrixEP (part 1)

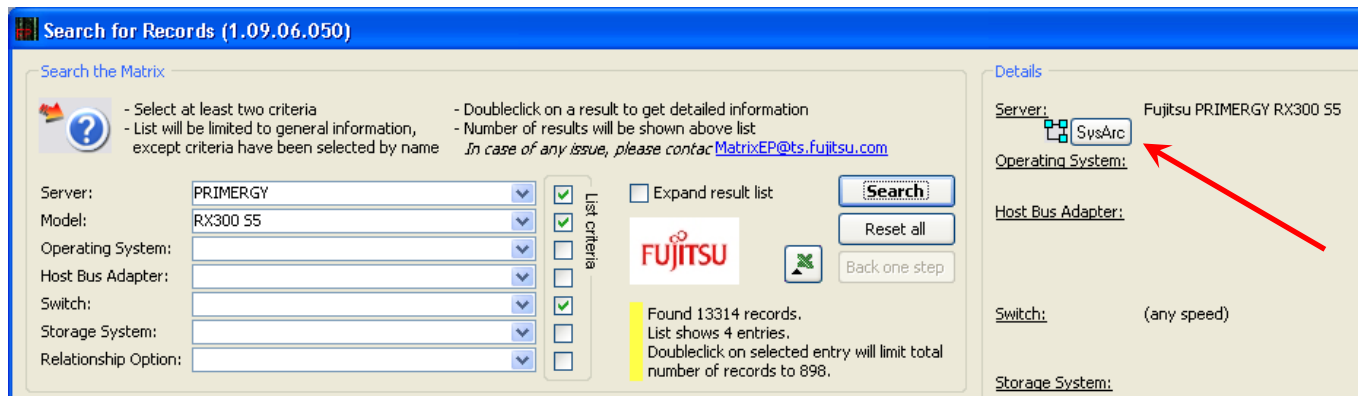
Introduction

MatrixEP is a tool from FUJITSU which helps the user to see which connection options can be used to connect a storage system to a host system.

The individual components (HOST, type of cabling, switch, storage system) are selected at a global level, e.g. 'PRIMERGY RX300 S5'.

Calling an interface

In order to derive an order (with order numbers) from these general names, a new function has been integrated in MatrixEP which calls SystemArchitect via an interface, transfers a search term and implicitly starts the function *component search*. This then lists all the components found which are allocated to the search term and the user can add one to the new configuration add.



The symbol marked with the arrow shows that a search term exists for this MatrixEP component and that the interface to SystemArchitect can be started. This is done by clicking on the symbol. After a prompt, the interface dialog appears.



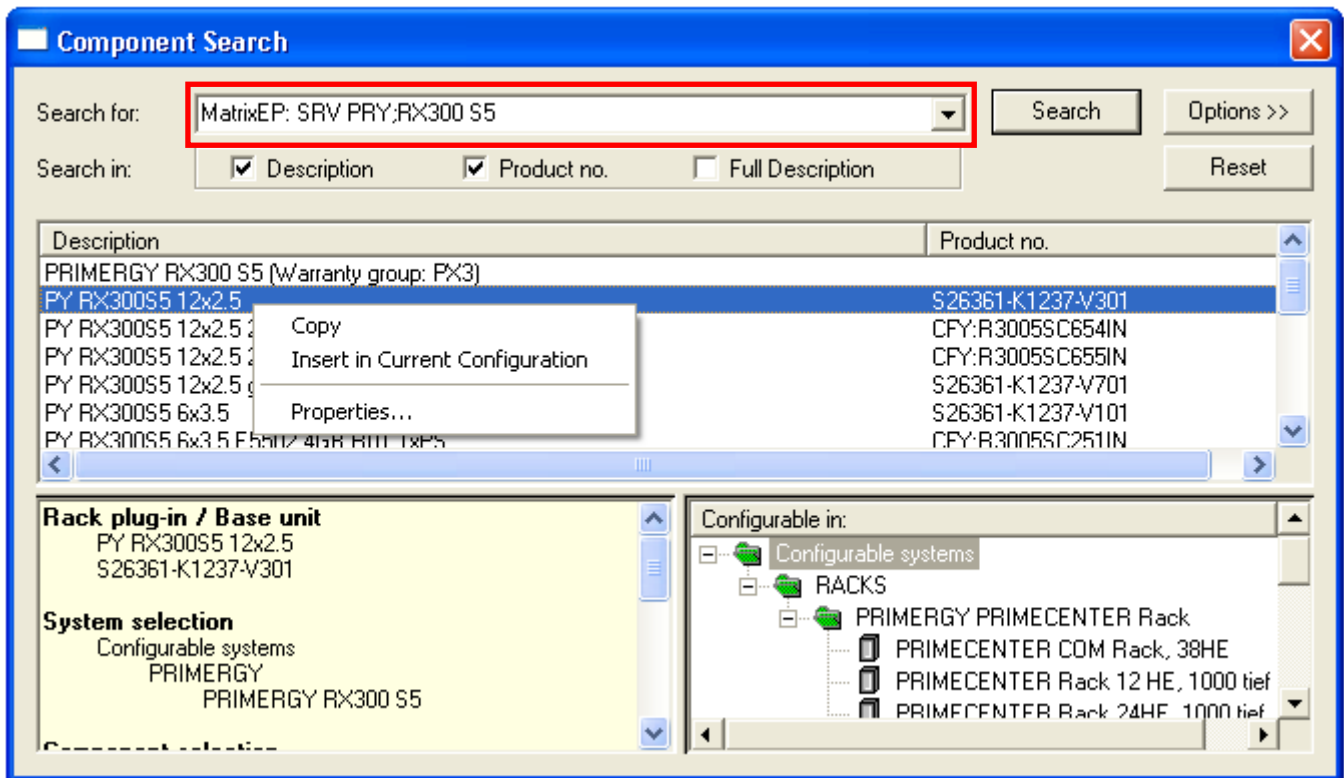
When starting the interface for the first time a new instance of the SystemArchitect must be started (Selection 'New') via which the process-process communication between MatrixEP and SystemArchitect is maintained for the entire session. It is not possible with the first call of the interface to establish the communication to an existing session of SystemArchitect!

The functions are as follows:

- 'Current' is used if an additional search term is to be transferred to the SystemArchitect which is to be added to the already established connection/configuration.
- 'New' is used when first calling the interface (description, see above)
- 'Disconnect' separates the momentary connection between MatrixEP and SystemArchitect. When calling the interface again, the selection option 'Current' is no longer available and a new configuration must be created.
- 'Cancel' cancels the call of the interface and returns to the matrix

Automatic start of the component search in SystemArchitect

The component search is started in SystemArchitect via the previous selection of 'New' or 'Current' and a term coming from the MatrixEP is added as default (red).



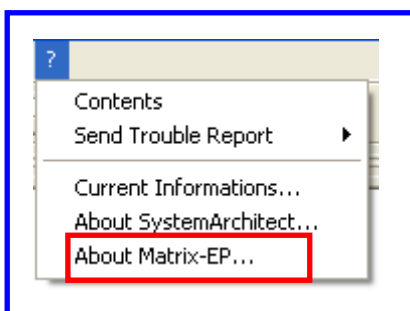
The middle part of the dialog displays all the hits for this term and the user can add them via the corresponding context function of the configuration by selecting a specific component.

The user can then transfer the components marked accordingly in MatrixEP via the interface function 'Current' to the component search for this configuration and the configuration can be extended or completed.

The process-process communication is ended by closing the configuration, closing MatrixEP or selecting the function 'Disconnect'.

Information about MatrixEP

More information can be obtained directly from SystemArchitect. Select the function *Info about Matrix-EP* in the menu '?'



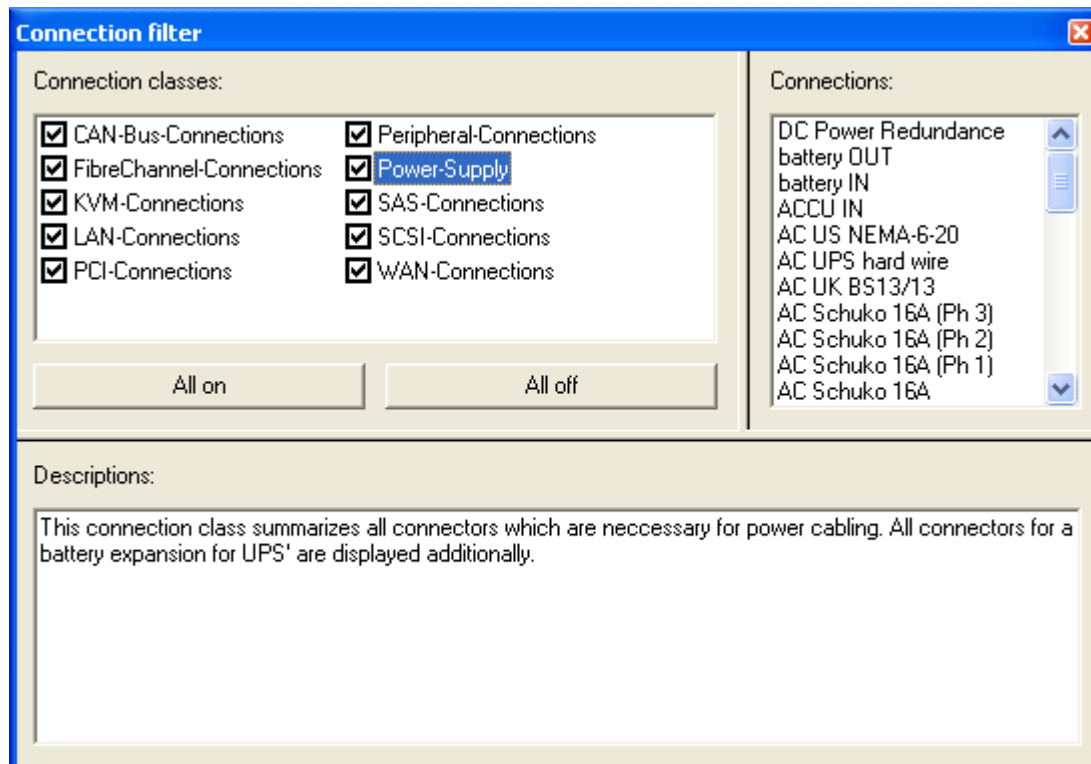
Further development

It is planned in a further stage (part2) to transfer a configuration that exists in SystemArchitect to the matrix and to have it checked regarding its release.

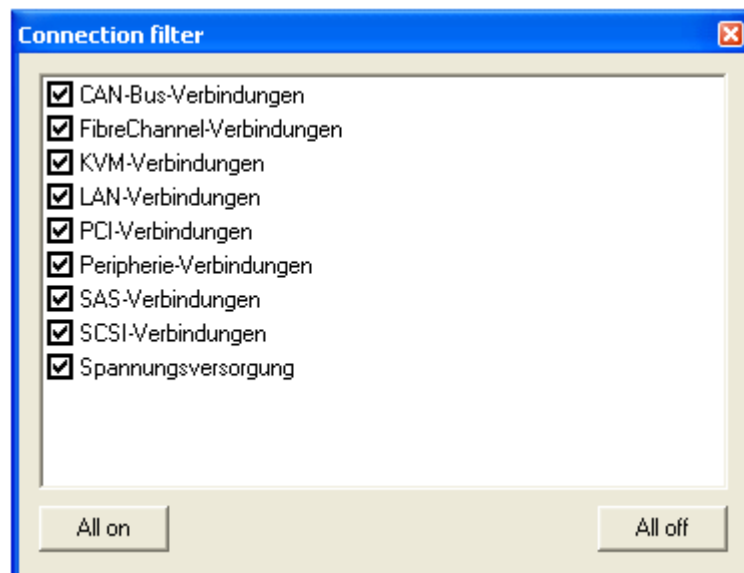
Many minor extensions

Changes in displaying the connection filter

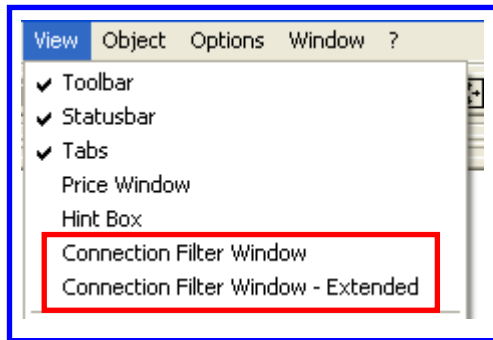
An extended dialog for the connection filter was implemented with version 7.5 of SystemArchitect.




This dialog window - because of its size - cannot be displayed when docked (e.g. on the left-hand side of the screen between the system selection window and the configuration overview). As a result of user requests, the previously used ('small') dialog has been reactivated and is now available as well as the extended version. The 'small' version can be displayed docked via double click in the header or via drag&drop or as "flying window".



Both versions are called via the menu View:

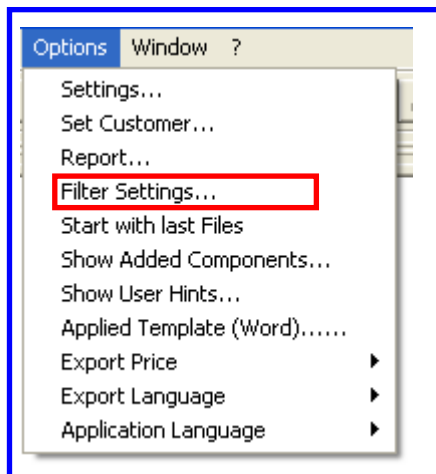


The connection filter window can also be called via the button. 

Modified setting of country filters

The new version of the PC and SystemArchitect makes it possible to select several countries with filter settings. This setting reduces the components offered when selecting the system, in the configuration view and when calling the functions *replace* and *conflict solving via configure*.

A new function *filter settings* in the menu *Options* has been implemented in order to facilitate understanding:

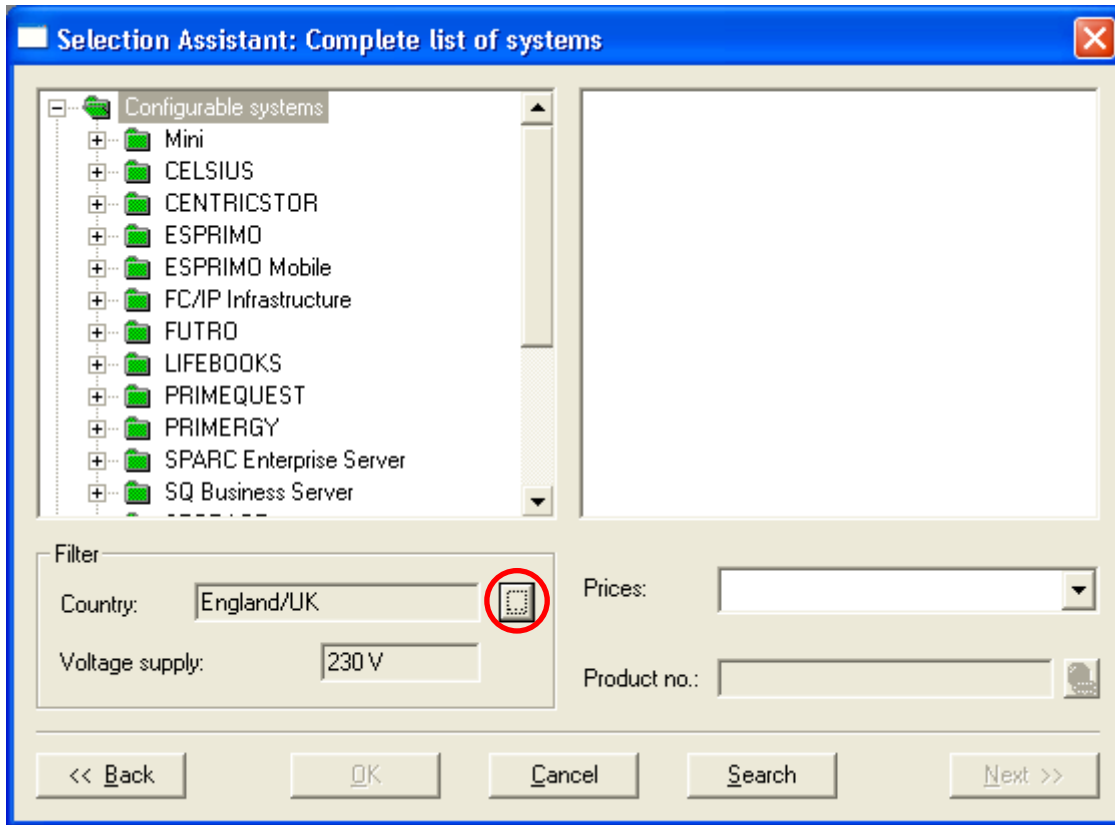


The various countries are selected via checkboxes in the subsequent dialog window:



It is now clear that the power supply specification has an analog, immediate filter effect as a result. The voltage set is also saved in the configuration as this is required to calculate the planning data.

The options menu resulting from the previous system selection is not directly available in PC-Architect. The filter dialog is thus called in PC-Architect via a new button:



Extensions of the function "Check"

The monitoring of the configuration of Mezzanine cards in PRIMERGY BX9xx systems has been improved in order to reduce configuration errors.

A mixed configuration of CPUs on the same system board is permitted for some SPARC Enterprise systems - this is tolerated by the test.

Display of standard guarantee with SPARC Enterprise systems

The new version displays the standard warranty in the system selection dialog as well as on the configured system within the configuration.

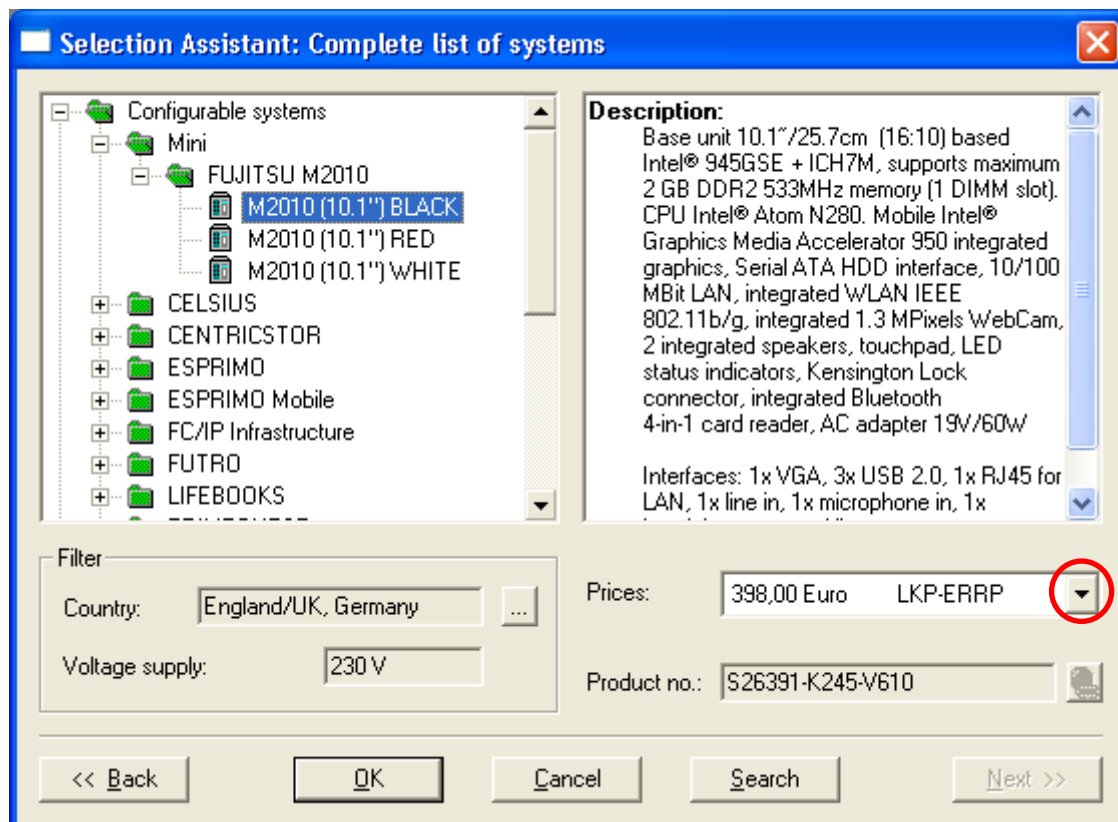
Improved documentation for "building connections" in EXCEL export

Modified lines between the individual racks and the components within each rack have been inserted in order to improve clarity.

	A	B	C	D	E	F	G	H	I	J	K	L	M
1	Rack:	Rack-1						Rack-2					
2	Component name:	APC Online UPS S2 3kVA / 2,1kW			Socket strip 1x 10 plugs + ass.			APC Online UPS S2 3kVA / 2,1kW			Socket strip 1x 10 plugs + ass.		
3	Backup time (h:m)*:	01:03			00:00			01:03			00:00		
4	Connection to house network:	AC CEE 1x16A			AC CEE 1x16A			AC CEE 1x16A			AC CEE 1x16A		
5	Phase:	L1 / 230 V			L2 / 230 V			L1 / 230 V			L2 / 230 V		
6		VA	W	A	VA	W	A	VA	W	A	VA	W	A
7													
8	PY RX300S5 6x3.5	737	733	3,20	737	733	3,20						
9	PY RX600S4				1305	1150	5,67						
10													
11	PY RX300S5 6x3.5							737	733	3,20	737	733	3,20
12	PY RX600S4										1305	1150	5,67
13													
14	Sum	737	733	3,20	2042	1883	8,87	737	733	3,20	2042	1883	8,87
15													
16	USV/Multiple socket outlet planning data	3000	2100	13,04	3680		16,00	3000	2100	13,04	3680		16,00
17													
18	Free capacity	2263	1367	9,84	1638		7,13	2263	1367	9,84	1638		7,13
19													

Change the price display in the system selection of the PC-Architect

The display of the system price within the system selection has been adapted to the price display of the Service Assistant. In future, the price to be displayed will be selected from a drop-down menu which replaces the horizontal display of all existing sales prices (with slider).



For further Information:

German/English (Extranet): <https://partners.ts.fujitsu.com/configurators>

German (Internet): <http://configurator.ts.fujitsu.com/public/>

English (Internet): http://configurator.ts.fujitsu.com/public/public_en/

Training Offer

Training programs are offered on the topic of 'Configuration Tools' and can be adapted to meet the needs of the individual participant group.

Course objectives: To provide a functional and performance overview
To create simple and complex configurations
To provide practical experience of tool handling through exercises

Target group: Technical consultants, sales employees (with or without previous knowledge of the tool) with the relevant product know-how

Language: German and English

Duration: 3 hours to 2 days (depending on individual needs)

Possible topics: Selection of systems, add-on and upgrade components
Configuration of individual systems
Assembly of racks and rack modules
Handling offer packages
Special functions for PRIMERGY, PRIMEQUEST, SPARC-Enterprise and CentricStor
External cabling / Handling the cabling wizard
Plausibility checking
Creation and use of configuration templates
Import and export functions

Contact: christian.buechner@ts.fujitsu.com

Registration for 1-day standard courses at: <http://de.ts.fujitsu.com/rl/workshops/architect/>

(The standard training courses are only in German, in English on request)