

INFORM

New version 8.3 **PC and SystemArchitect** Planned Release 18. June '09

Issue	June 2009
Category	PC / SystemArchitect
Content	Tool Change
Distribution	External / Internal
Pages	13

Overview of the new functions / **Benefits for the user**

- **Automatic replacement of installation components**
Avoid incorrect orders
- **Introduction of power supply 208V & circuit redundancy**
Modifications for global power supply
Function enhancement for power cabling
- **Display connector information**
Improved information
- **One-sided connection of rack installation cables**
Extended configuration options
- **Minor extensions and improvements**
Improved handling and test

Automatic replacement of installation components

Introduction

The function "order relevance" in a configuration specifies whether the corresponding component is part of the order (order relevance = active), or whether it is a description of a component which is already available at the customer's but is required within the context of the configuration (order relevance = not active).

The order relevance can be set separately for each component in configuration. Each new component added to the configuration is order-relevant at the beginning

There are additional inherit mechanisms which simplify handling if the order relevance for higher-level components is modified. For example, if a basic unit is switched, all its (configured) installation components as well as the options are also automatically switched. The same applies for groups, racks, all accessory parts and the entire configuration.

Installation components

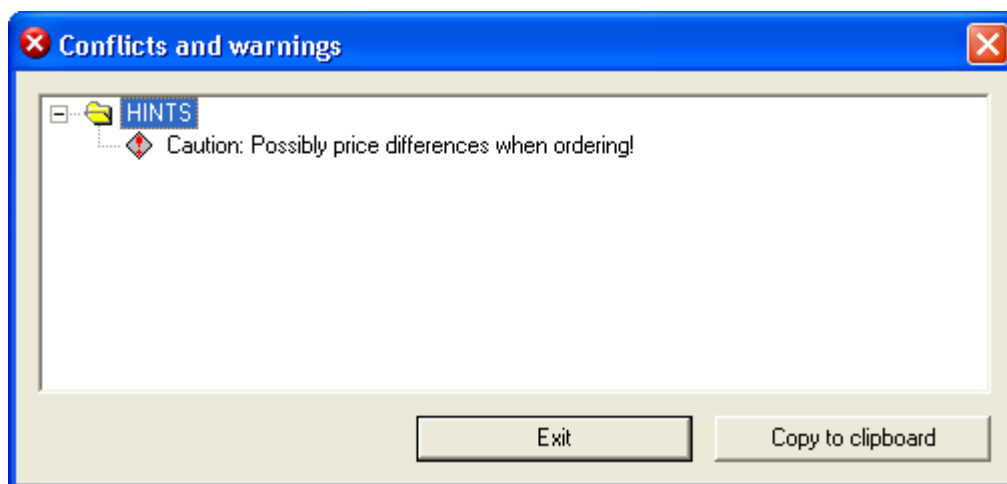
A special rule exists for installation components which are in BTO orders/configurations: an order-relevant installation component can only be in an order-relevant container (basic version or rack) (to make sure it is exactly this "installation")!

The roll-out has shown that - having deactivated the order relevance of a basic unit / rack - all the components included are also not order-relevant. However, all the components then added are considered as order-relevant. However, in the case of an installation component, this resulted in conflicts with the order which could not be solved in the past in PC and SystemArchitect.

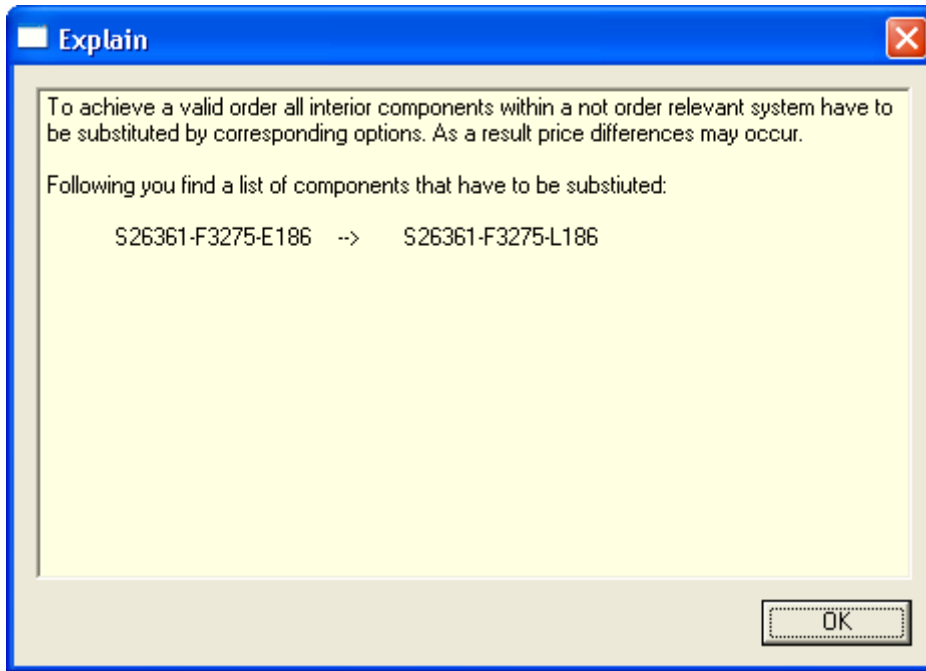
Solution

The new version 8.3 now converts order-relevant installation components which are configured in a non order-relevant container automatically into the corresponding delivery part when the configuration is exported. The component remains unchanged in the configuration (SAR file)! This is important in order to retain the functions of an installation component (conflict solution, cabling ability, ...).

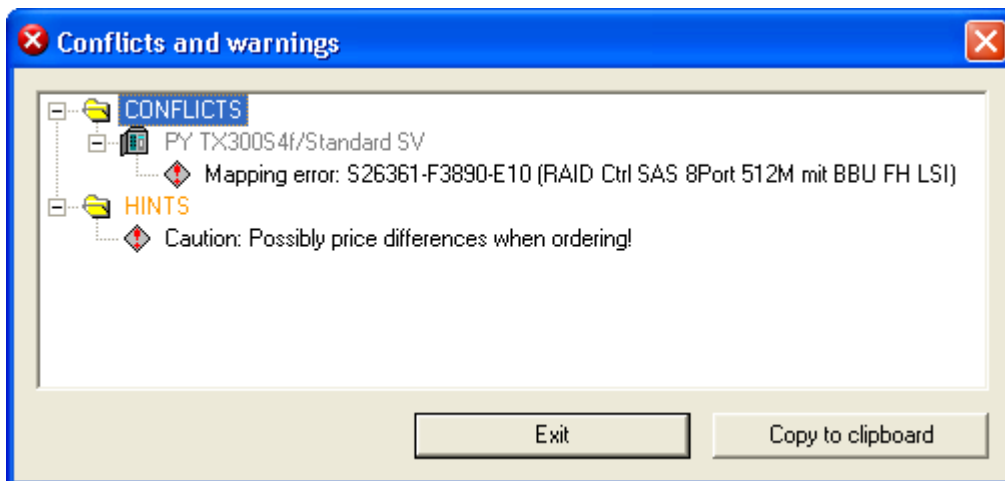
The corresponding global [information](#) is displayed when checking the configuration as the prices between installation component and delivery part can vary under circumstances.



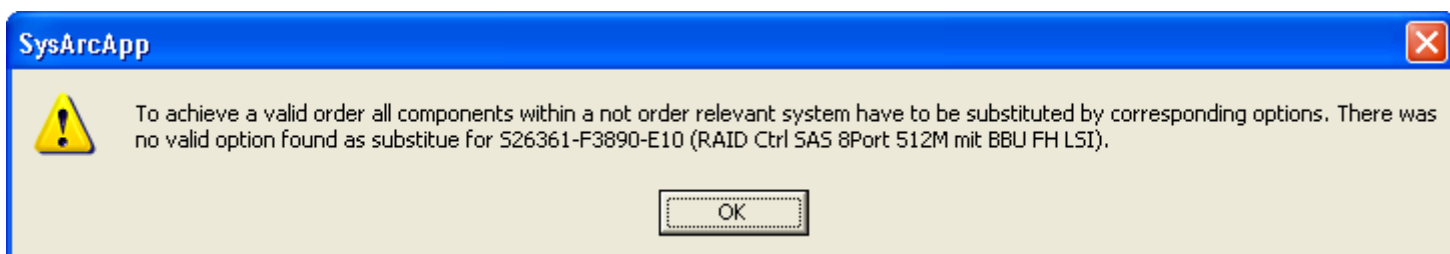
Selecting the context menu function 'Explain' returns more details, e.g. which components are affected:



If an installation component does not have a corresponding delivery parts, a conflict is displayed for each component as in this situation the configuration cannot be processed in the factory:



Select the context menu function "Explain" for the conflict to see more details:



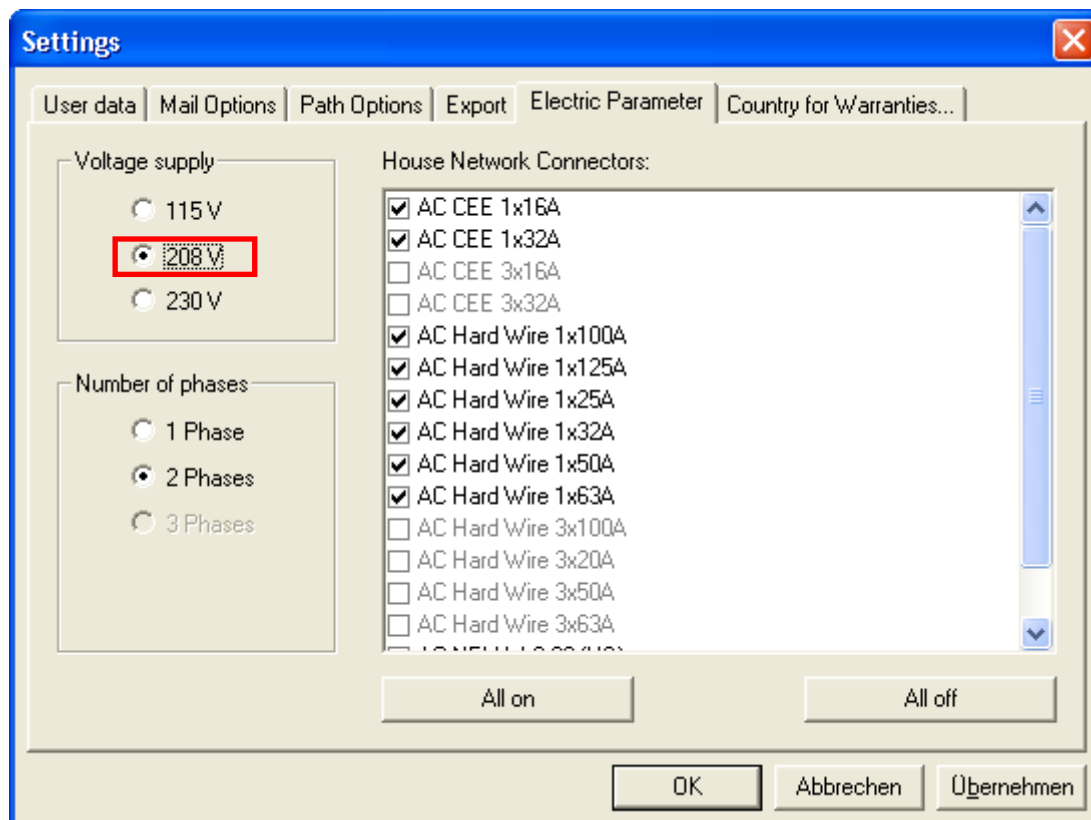
The automatically replaced components are separately labelled by a footnote in the exports 'item list' (EXCEL and WORD):

Fujitsu Technology Solutions GmbH		05.06.2009 17:35:12	
Overview		COMPONENTS	
		SAP-Order No.: _____	
Order number	Product name	LKP-ERRP/Eu	Count
Hardware			
S26361-F3275-L18 [Ⓢ]	Xeon DP E5205 1.86 GHz 6MB 1066MHz	290,00	1
Subtotal		290,00	
Total price		290,00	
Ⓢ Component has been substituted by an option.			

Introduction of power supply 208V & circuit redundancy

Introduction power supply 208V

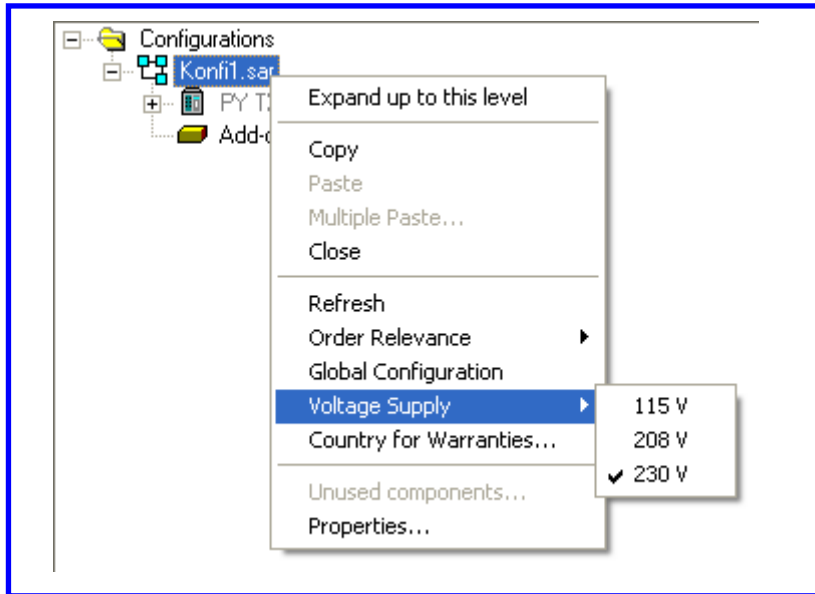
A new voltage selection '208V' has been added to the existing settings '115V' and '230V' in order to calculate the power loads and adapt to 115V mains requirements. This is used - as before - in the dialog 'Options - settings - electric parameters' and automatically inherited to each new configuration created:



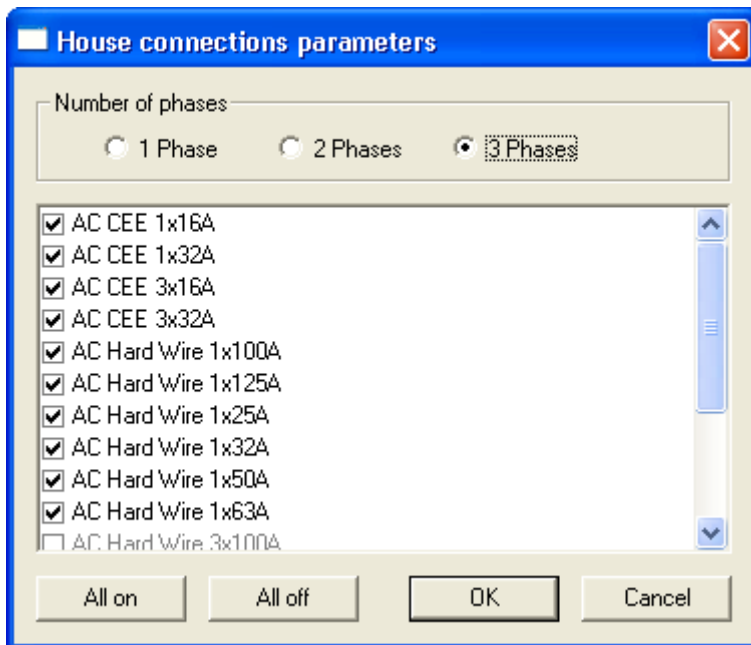
A change in voltage to 208V also reduces the maximum number of phases to '2' and thus the reduction to single-phase house connections. These two values are automatically inherited to each rack which is added to the configuration.

A subsequent change is possible at any time:

- for the voltage for the configuration using the context function



- for the number of phases and for the building connection on the rack with the function 'House connection parameters'

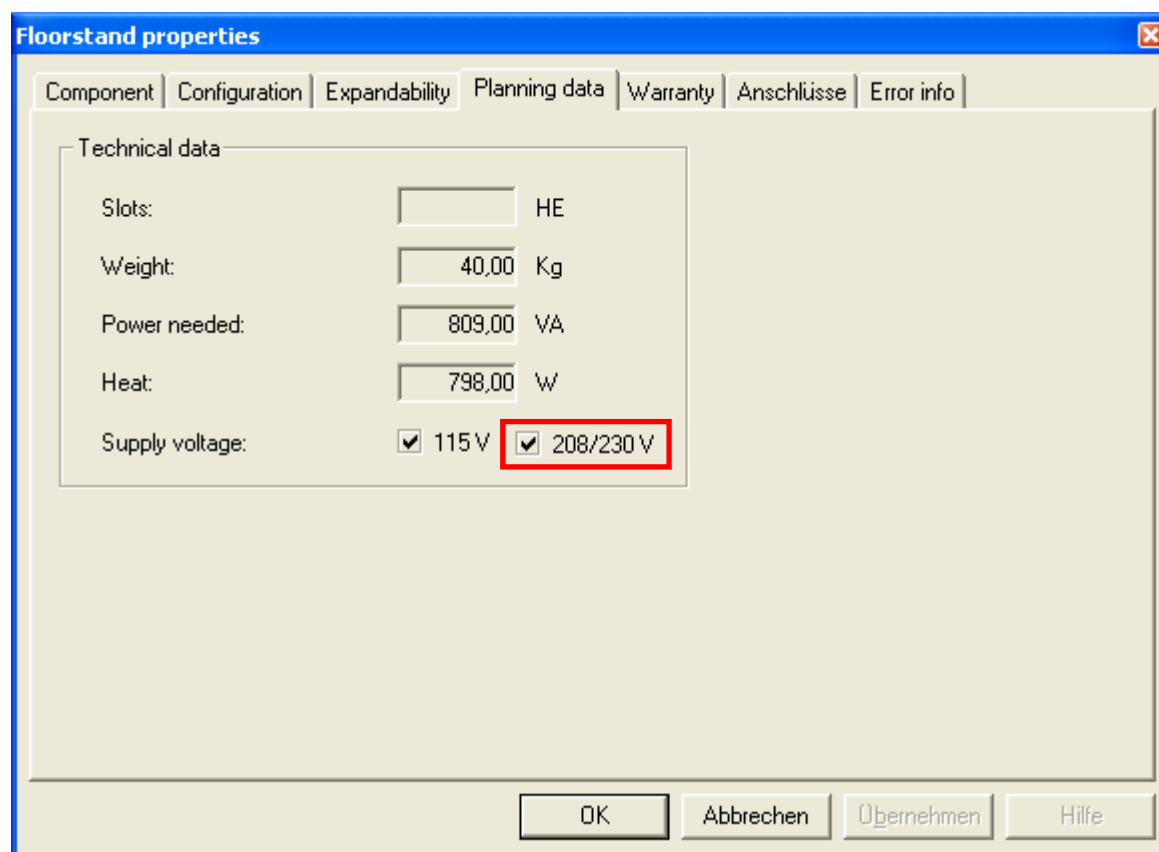


Changes to existing configurations usually result in a message as - after the conversion of the parameters - the configuration is no longer consistent. Any errors are displayed via the check function.

The change in power voltage is also taken into account when:

- calculating / sizing the socket bars and UPS's within the power assistant
- calculating the power flows at connectors
- calculating overload as part of the check
- details about power consumption in the exports (electric planning data)

The introduction of the new power voltage '208V' has no effect on the consuming units; it is assumed that a 230V consumer can also be used for 208 V operation. This is seen in the "properties" dialogs for a power consumer as follows:



The screenshot shows a dialog box titled "Floorstand properties" with a blue header and a close button (X) in the top right corner. The dialog has several tabs: "Component", "Configuration", "Expandability", "Planning data", "Warranty", "Anschlüsse", and "Error info". The "Technical data" section is active and contains the following fields:

Slots:	<input type="text"/>	HE
Weight:	<input type="text" value="40,00"/>	Kg
Power needed:	<input type="text" value="809,00"/>	VA
Heat:	<input type="text" value="798,00"/>	W
Supply voltage:	<input checked="" type="checkbox"/> 115 V	<input checked="" type="checkbox"/> 208/230 V

The "208/230 V" option is highlighted with a red rectangle. At the bottom of the dialog, there are four buttons: "OK", "Abbrechen", "Übernehmen", and "Hilfe".

The additional filter function on the product offer in the system selection tree which is controlled via the value under 'Options - settings' likewise sets the selection of '208V' and '230V' as the same value so that all the products are always displayed which are available for '208V' and '230V' irrespective of the selection made.

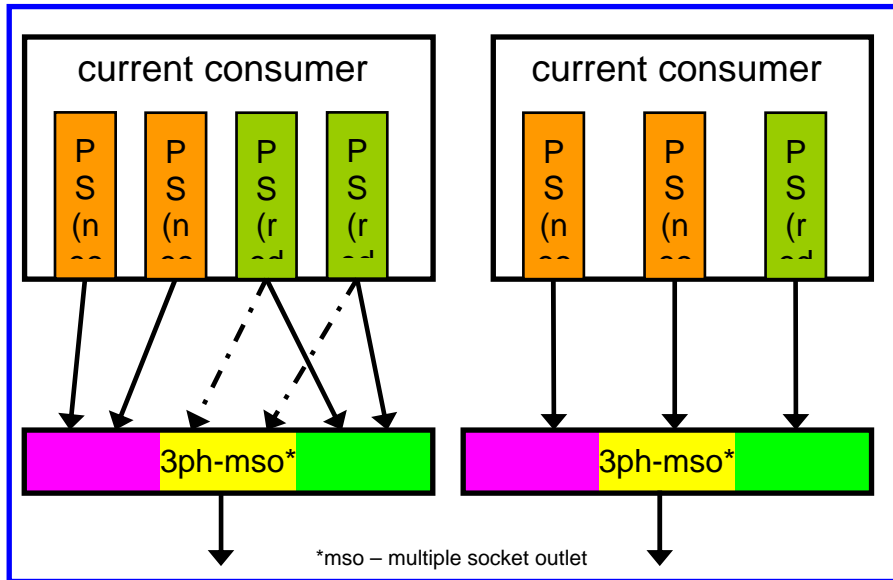
Introduction of circuit redundancy

Circuit redundancy is a certain type of power supply for racks and their consumers.

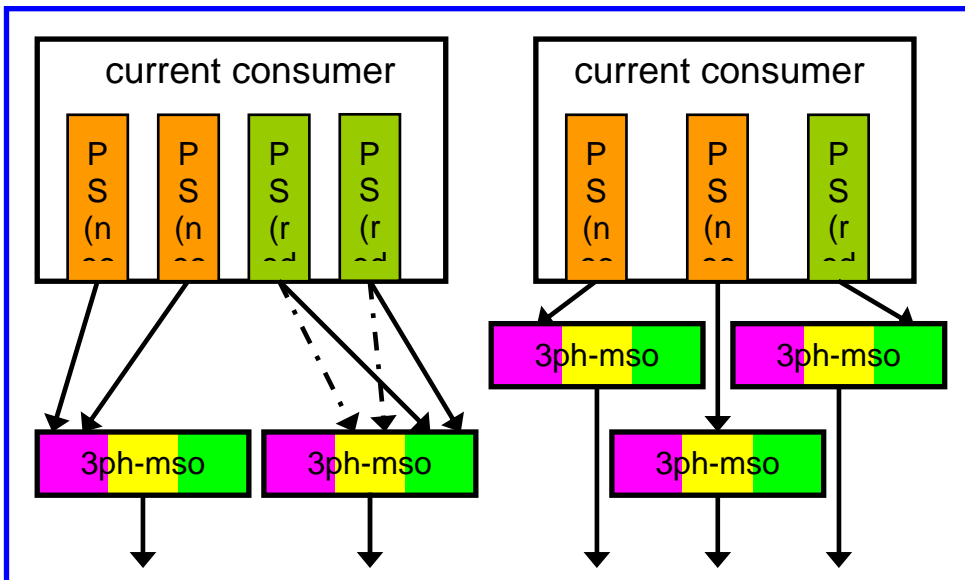
- Circuit redundancy needs an activated phase redundancy
- Phase redundancy requires the existence of redundant power supply units

Circuit redundancy exists when the supply of the various phases (phase redundancy) exists for a consumer via separate feeds (socket bars, / UPSs)! The advantage is that a complete "chain" of the feed can fail (broken cable, backup, etc), without causing consumer downtime.

When using single-phase feeds the circuit redundancy implicitly exists; each phase is made available via a separate feed. When using 3-phase connections which also provide these three phases at the outlet (socket bars, SDL), the circuit redundancy means more socket bars are required:



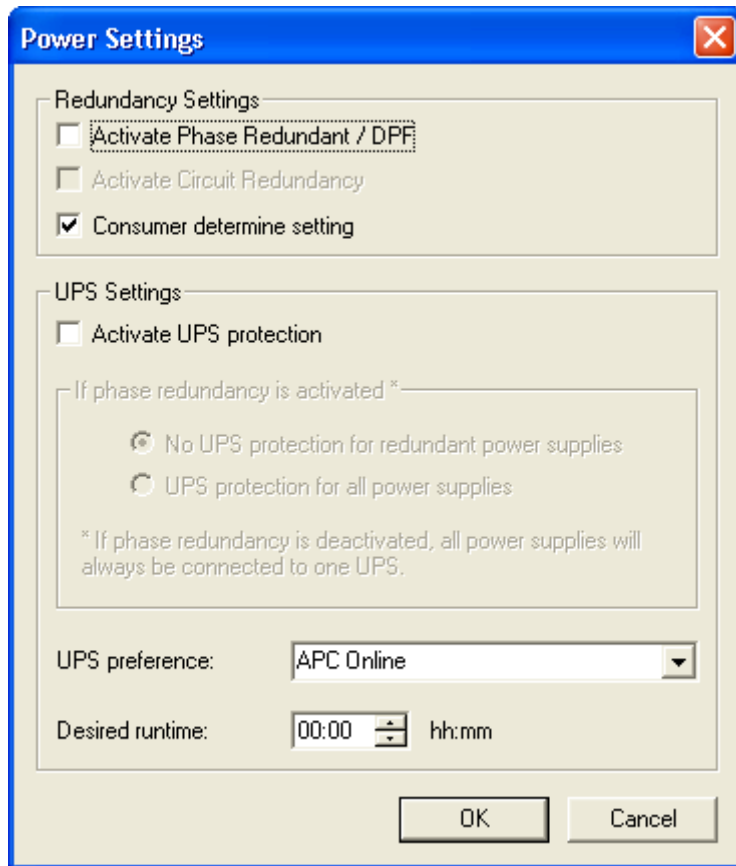
In this example, the consumers (on the left a consumer with a symmetrical number of power supply units; on the right, one with asymmetrical number) are connected phase redundant, but not circuit-redundant. A supply failure leads to a total consumer failure.



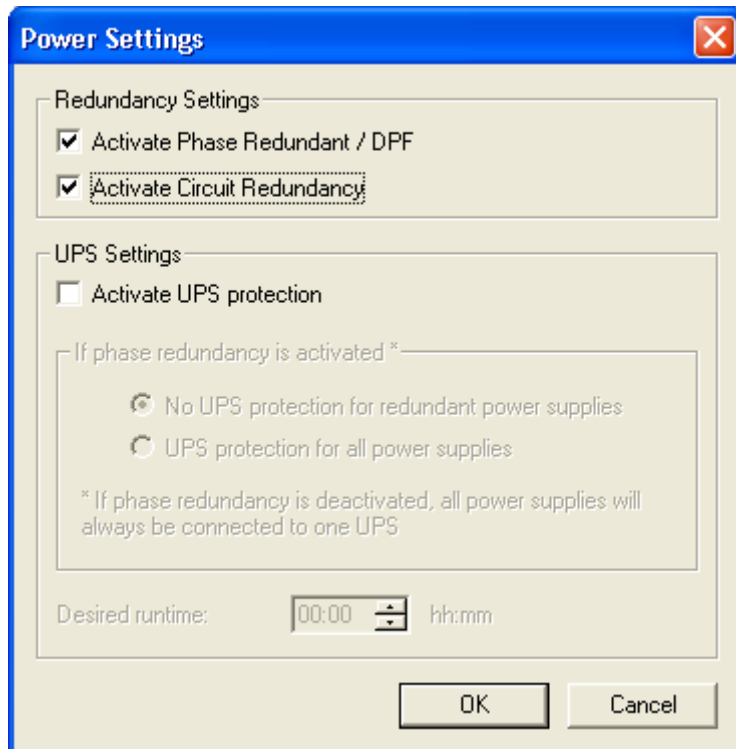
In this example, the same consumers are connected phase and circuit-redundant. A supply failure does not result in a consumer failure.

The circuit redundancy is set analog to the phase redundancy for each consumer or centrally on the rack. The previous separate setting options for UPS backup and phase redundancy have now been put into one new dialog "Power settings":

- The dialog on the rack also contains the UPS preference. The selection of the circuit redundancy can only be activated if phase redundancy is activated

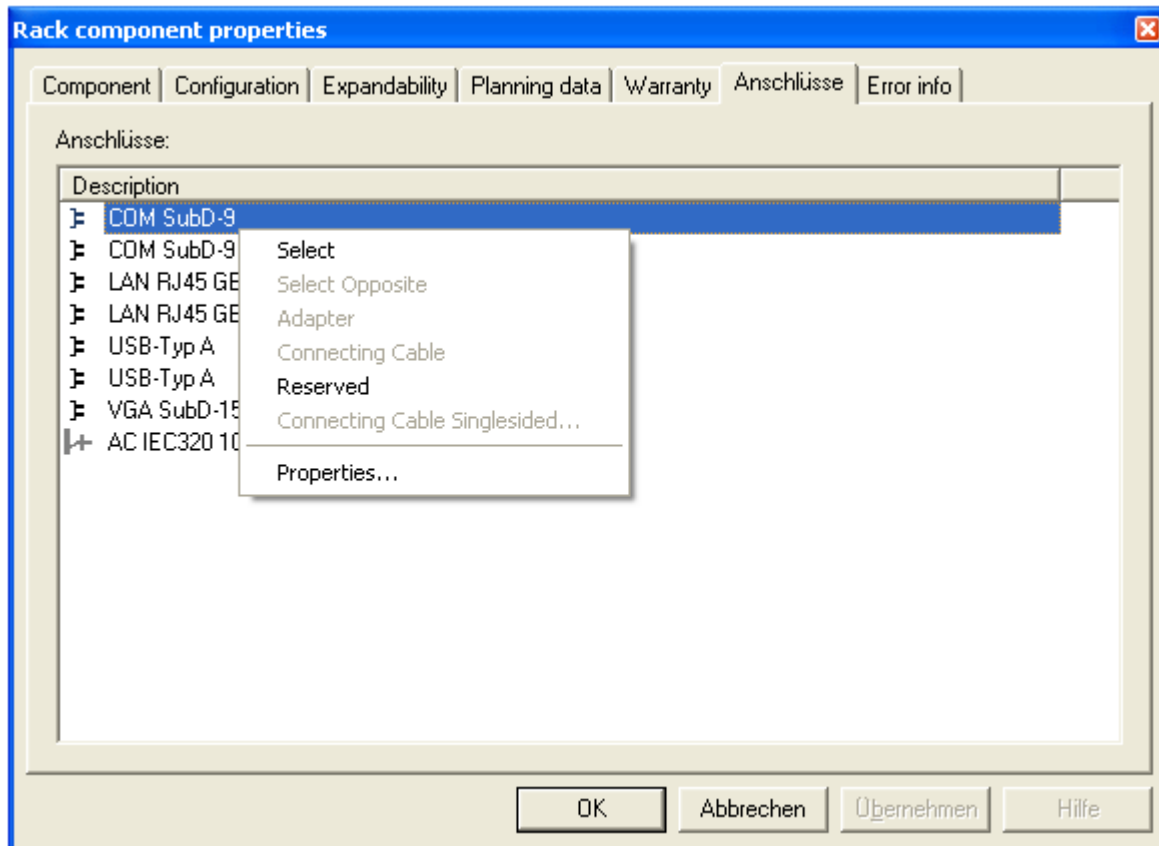


- The dialog on the consumer is analog (here: the example with activated phase and circuit redundancy)



Display of connector information

A new tab "Connections" has been added in the "properties" dialog for almost all component types (basic units, installation components, options and cables) which shows all the external connectors of the components. A context menu for each displayed connector is available to enable additional functions.



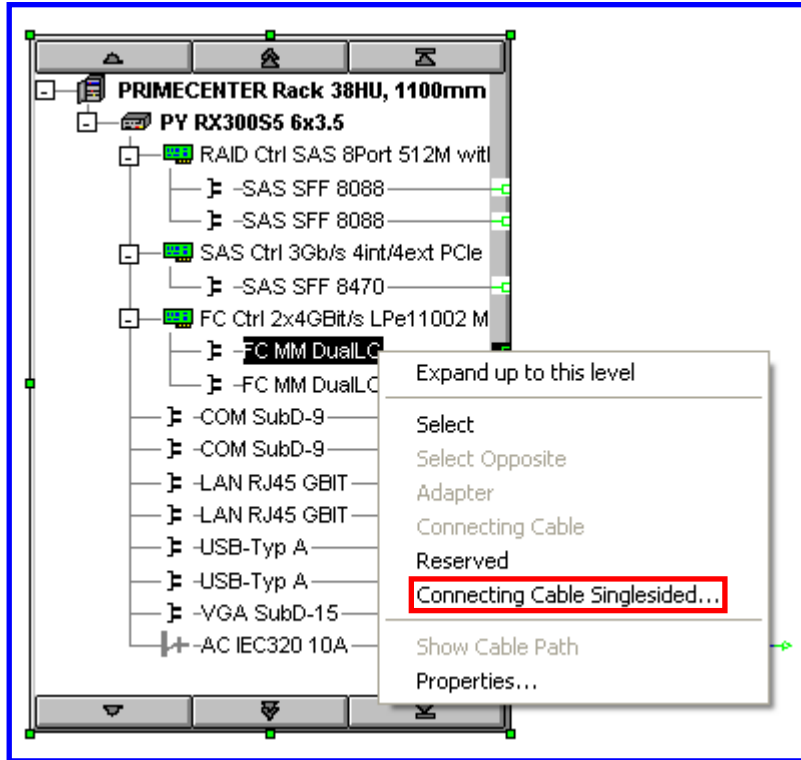
Special mention must be made that all loose cables can be separately selected in the yellow box "Accessory parts" (without using the function "Cabling"); this new function is a considerable improvement in information as the product texts for cables (and their connectors) was not always clear enough.

One-sided connection of rack installation cables

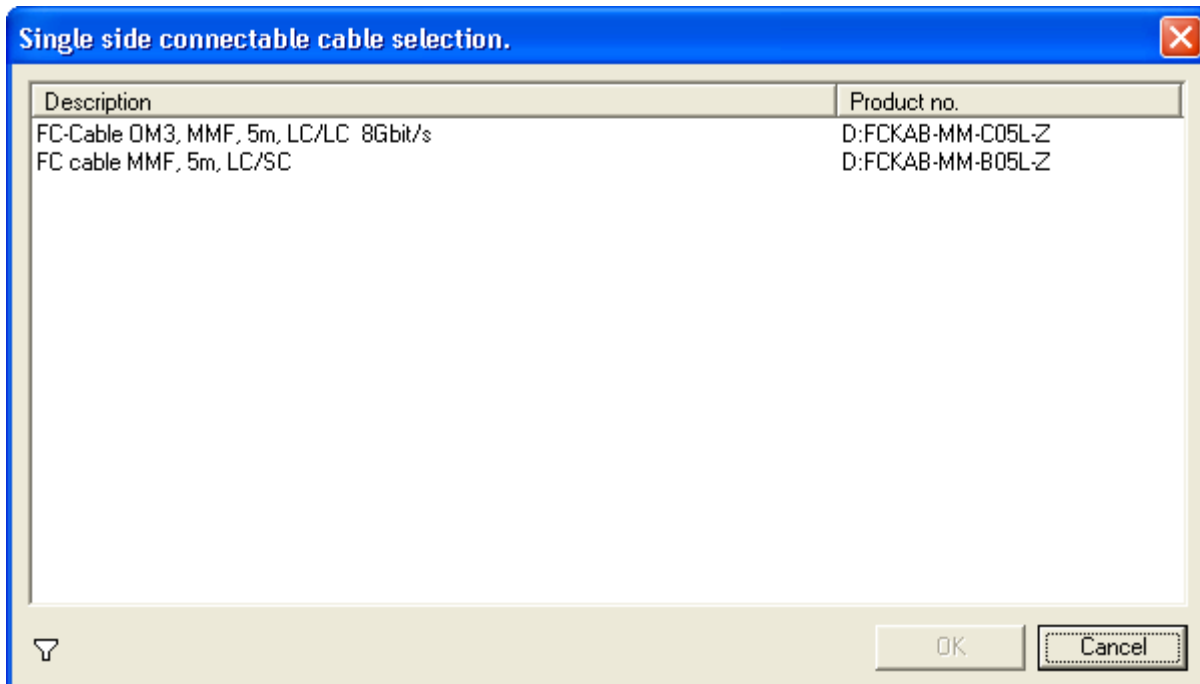
Introduction

Internal rack cabling in the connection view: in the past cables could only be configured if all the cable ends were "connected" to a socket. Required cables whose "other" end was outside the configuration (e.g. connection to a patch field in the data center), had to be ordered separately and then mounted by the customer in the rack.

The new function "connect one-sided cable" is used to select cables which can be connected on one side to the selected socket. The function can only be selected if the corresponding cables are available.



In this example, it is a 'DualLC' socket to which a cable can be connected; the other end has a 'DualLC' or a 'DualSC'.



In connection with the extension of the property dialog described earlier, additional information for the offered cables can be displayed via the tab "Connections".

Minor extensions and improvements

Attributes/features for entire systems in the system selection assistant

An internal data extension means that in future the basis systems for the complete systems are known. It is now possible to inherit the features of the basic systems to the corresponding complete systems. This now means that the finding the system in the system selection assistant is now also complete and the complete systems are automatically integrated in the search. In addition, the external connections of a complete system can also be displayed via this inherit (see "Display connector information")

Description of groups in EXCEL as well

The group function for floorstand systems has already been available for some time. The coming version has a new element: this feature is also documented accordingly in the EXCEL export and in the internal function "item list":

- The groups structure the overview page

Sheet	contains	LKP-ERRP/Euro
Group-1 ←	Location Toontown	
System-1	Printserver TX150 S6	440,00
System-2	Database server (extension) RX600S4_a	3.150,00
Group-2 ←	Location Punxsutawney	
System-3	Printserver TX150 S6_b	440,00
System-4	Database server (extension) RX600S4_b	3.150,00
Configuration price:		7.180,00

- The EXCEL export has a separate tab for each group which lists all the allocated systems and their components
- Any grouping is also displayed under the system name

Product version:	03-06-2009 (Price list: June 2009)
System:	Printserver TX150 S6
Gruppe:	Location Toontown
Product no.	Name
S26361-K1081-V101	PY TX150S6f/LFF/Standard PSU

Extension of the internal dummy disk assistant

Version 1.0 of SystemArchitect already constantly calculated the dummy disks of a rack in the background and automatically added them to the configuration for export. The user is free in his configuration of Racks (add/move rack modules) without having to delete or move existing dummy disks.

This functionality has been extended for rack modules which are suitable for mounting dummy disks (relevant products in the CentricStor sector)

Extension of the regulations for slot assignment in the 'SPARC-Enterprise Server' product sector

The internal routines of the function "Assistant - assign slots" which are available for selected systems in the family "SPARC Enterprise Servers" have been adapted in order to meet new requirements. Should manually changes be made after the Assistant run, they will be faulty; this is reported via the function "Check" and a conflict!

Extended functionality for the "FC/LAN Assistant" in the CentricStor product sector

The function "Assistant - CentricStor FC/LAN Assistant" which is available for selected systems in the CentricStor family has been adapted to meet new requirements. Should manually changes be made after the Assistant run, they will be faulty; this is reported via the function "Check" and a conflict!

For further Information:

German/English https://partners.ts.fujitsu.com/order_supply/configurators/

German: <http://configurator.ts.fujitsu.com/public/>

English: http://configurator.ts.fujitsu.com/public/public_en/

Training Offer

Training programs are offered on the topic of 'Configuration Tools' and can be adapted to meet the needs of the individual participant group.

Course objectives: To provide a functional and performance overview
To create simple and complex configurations
To provide practical experience of tool handling through exercises

Target group: Technical consultants, sales employees (with or without previous knowledge of the tool) with the relevant product know-how

Language: German and English

Duration: 3 hours to 2 days (depending on individual needs)

Possible topics: Selection of systems, add-on and upgrade components
Configuration of individual systems
Assembly of racks and rack modules
Handling offer packages
Special functions for PRIMERGY, PRIMEQUEST, SPARC-Enterprise and CentricStor
External cabling / Handling the cabling wizard
Plausibility checking
Creation and use of configuration templates
Import and export functions

Contact: christian.buechner@ts.fujitsu.com

Registration for 1-day standard training: <http://de.ts.fujitsu.com/rl/workshops/architect/>

(The standard training courses are only in German, in English on request)