

Inform

We make sure



New version 8.2.5 PC and SystemArchitect Planned Release: 01. April '09

Issue	March 2009
Category	PC / SystemArchitect
Content	Tool Change
Distribution	External / Internal
Pages	11

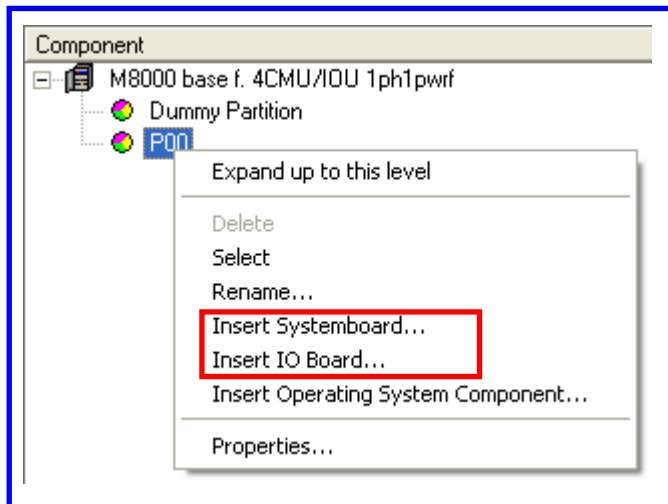
Overview of the new functions / **Benefits for the user**

- **New options for the insertion of system and I/O boards**
faster and simpler configuration extension
- **Multiple paste for floorstand systems**
faster and simpler configuration extension
- **Changes to the Service Assistant**
improved user information, fast configuration changes
- **Change to the graphic presentation of package cables**
improved user information
- **Introduction of a verification opportunity for options**
avoid configuration errors
- **Various minor changes**
improvement in handling and avoiding errors

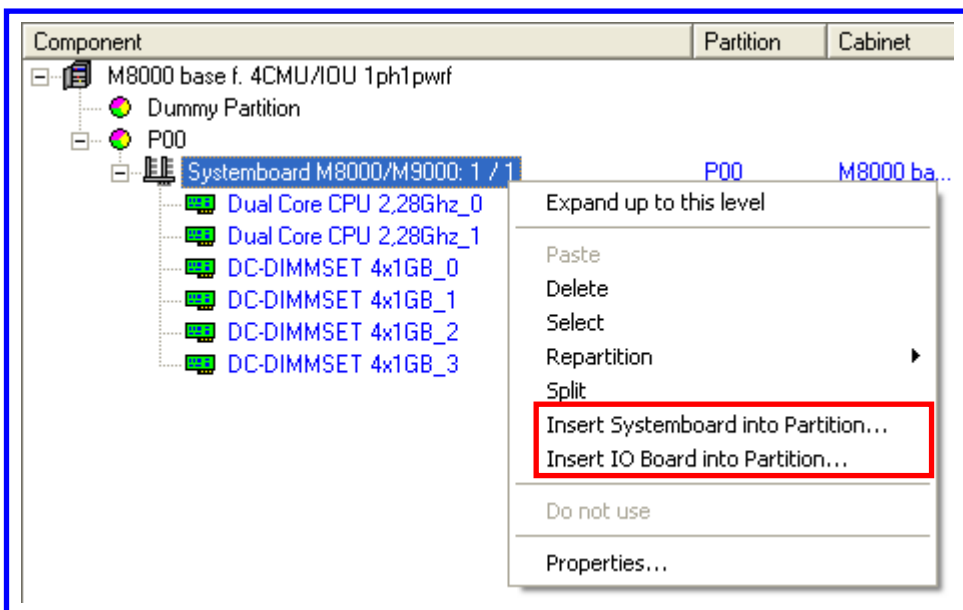
New options for the insertion of system and I/O boards

A function-specific view - the partitioning view - is available for partitionable systems. This view provides all the necessary functions that are needed to configure partitions.

One of these functions is the insertion of system and/or I/O boards to extend the partitions. Until now it had only been possible to perform this function on the object of the partition.



In the new version 8.2.5 additional context functions are possible directly on the object of the system or I/O board in the partitioning view.



The same range of functions per context function is also available in the header line:

Total	Systemboard M8000/M9000:
0	
2	2
0	0
0	0
4	4
0	
0	
0	
0	
0	
0	
0	

- View All Columns
- Default Columns Width

- Paste
- Delete
- Select
- Repartition ▶
- Split
- Insert Systemboard into Partition...
- Insert IO Board into Partition...

- Do not use

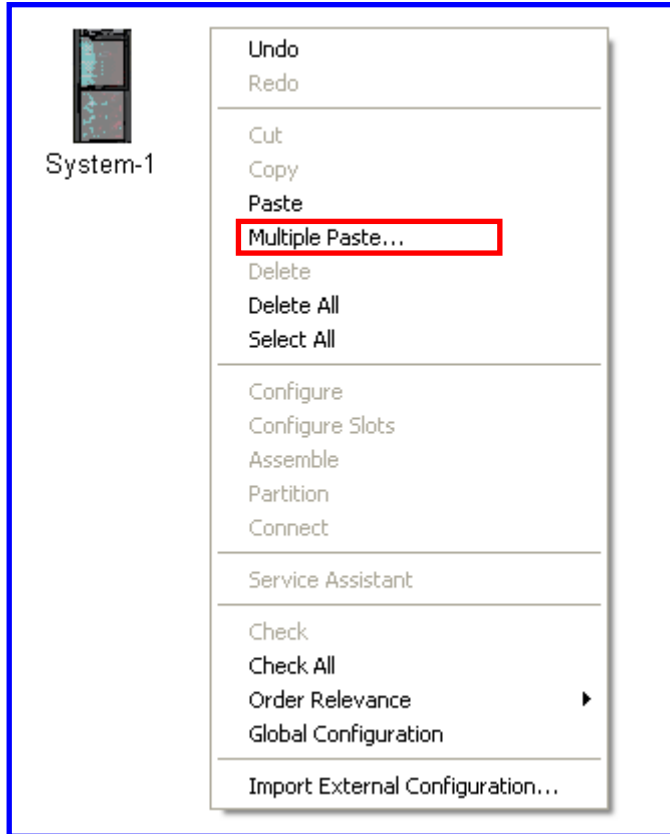
- Properties...

Multiple paste for floorstand systems

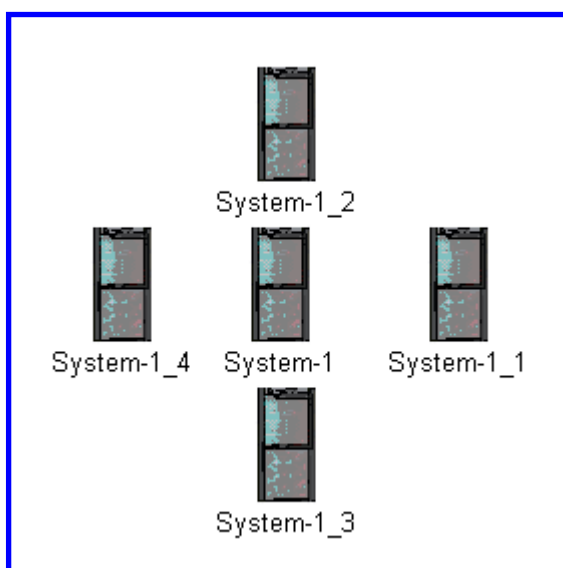
The function 'Multiple paste' is now also available in the floorstand section of the SystemArchitect. Analog to the function for rack modules, which has already been available for some time, this function copied the system that was available on the clipboard n-fold into the floorstand view.

This function is not available in the PC-Architect, because the number of systems there can be directly entered into the configuration view of the individual system.

The function is performed by right-clicking on the free space with the mouse:



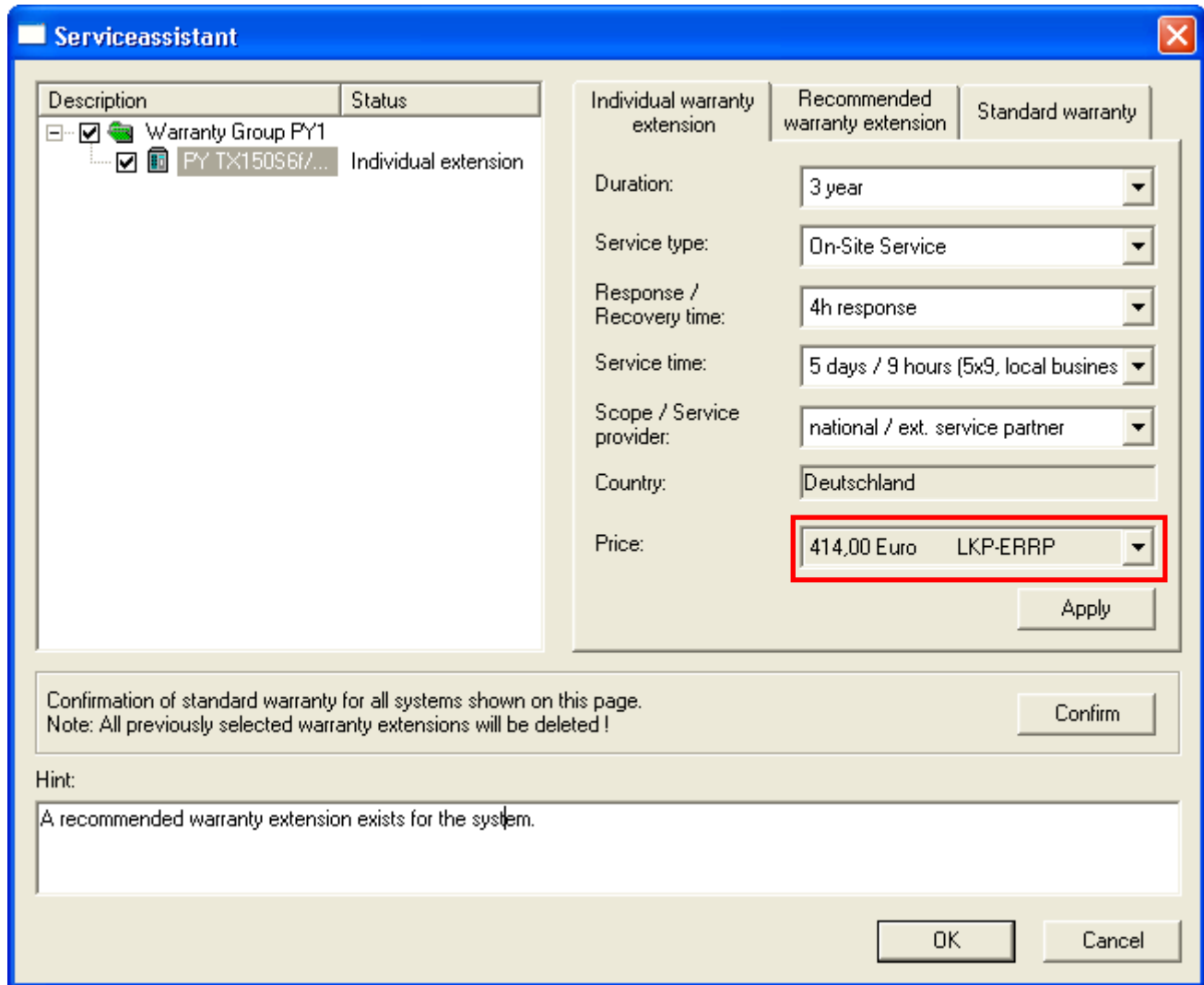
The systems are inserted in the configuration according to the number stated by the user. Naming is done automatically and the systems are arranged in a circle around the source system.



Changes to the Service Assistant

Display of the sales prices

A display of the price for the selected service product has been integrated in the Service Assistant in the new version V8.2.5:



The price display is available for individual selection and also for recommended warranty extensions that may possibly exist. If several different sales prices are available, these can then be chosen via the drop-down menu on the right next to the amount. While the window of the Service Assistant is open, the price selection remains - even if the service and/or warranty type (Individual / Recommended / Standard) is changed. Every time the Service Assistant is started, the sales price preset under 'Options - Price for Export' is shown first.

Change to the labeling of the tabs

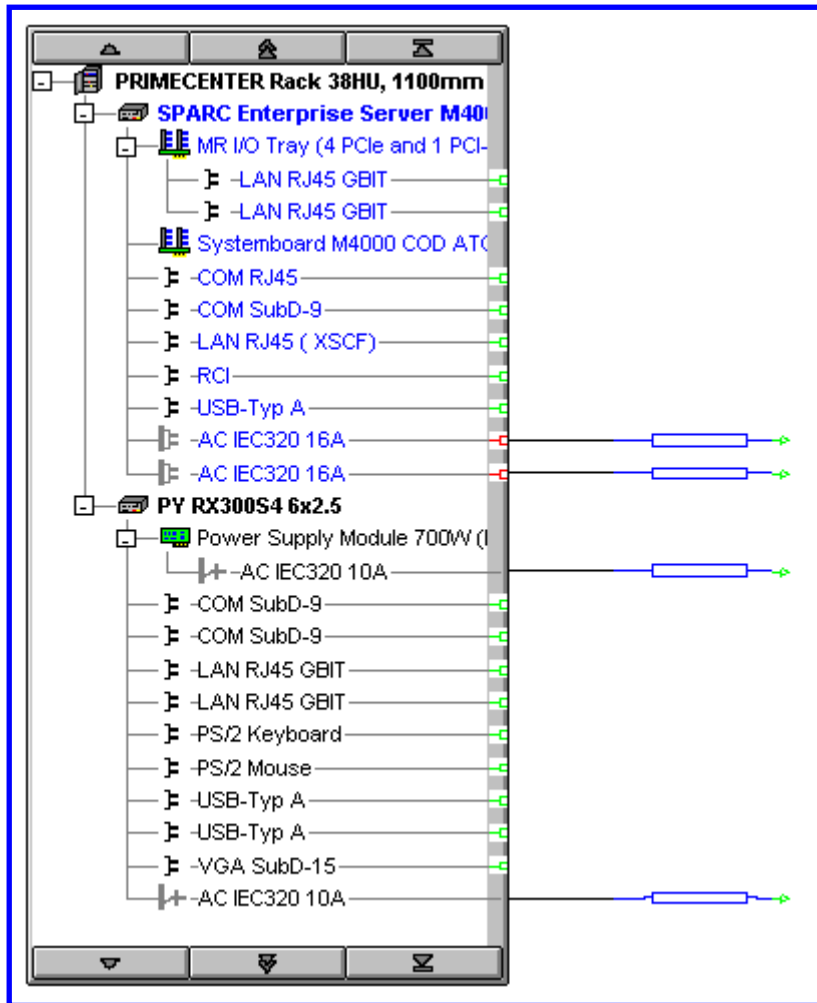
The labeling of the tabs for the warranty type has been re-arranged in 2 lines to improve understanding.

Adoption of the standard warranty for all selected systems

The horizontal section in the middle is new, and is available in all 3 warranty types. Here the user can by means of a mouse click activate the respective standard warranty for all the systems shown.

Change to the graphic presentation of package cables

The color presentation in the connection view has been adapted analog to the text color of the name of not-order-relevant components or package cables. In future the cables will also be shown as a symbol in the appropriate color



Comment: The SPARC-Enterprise server at the top of the figure is set up completely as a package (blue components and blue cable). Contrast this with the PRIMERGY server RX300S4 in the bottom section: the additional chargeable power supply module (in black) includes in its price a connecting power cable (blue), just as the basic system includes a connecting cable (blue, bottom)

Introduction of a verification opportunity for options

Introduction

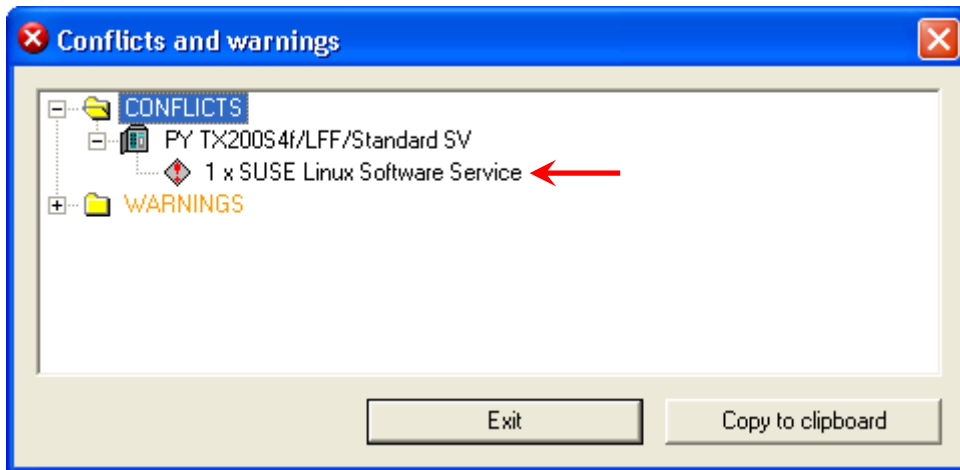
The previous data model (resource model) only takes into account the monitoring of installation components in their basic versions. However, services for software licenses or any necessary service extensions in the event of hardware extensions (upgrade) cannot be entered from a model viewpoint as an installation component - thus an adjustment was required in this respect.

Also new here is the verification of upgrade media, as these also include the options to be tested. Whether an option - if an order is placed via upgrade media - is tested or not can be controlled in the database.

The two scenarios shown below have been set up for test purposes - later they can in reality occur in a modified form.

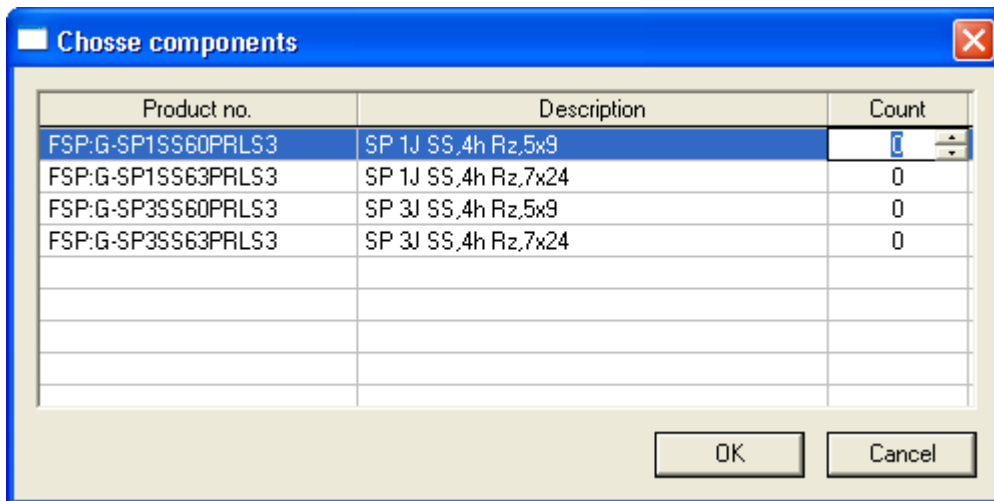
Verification for software licenses

If software (which is in turn only ordered as an option) that is subject to service is configured, a conflict is triggered:



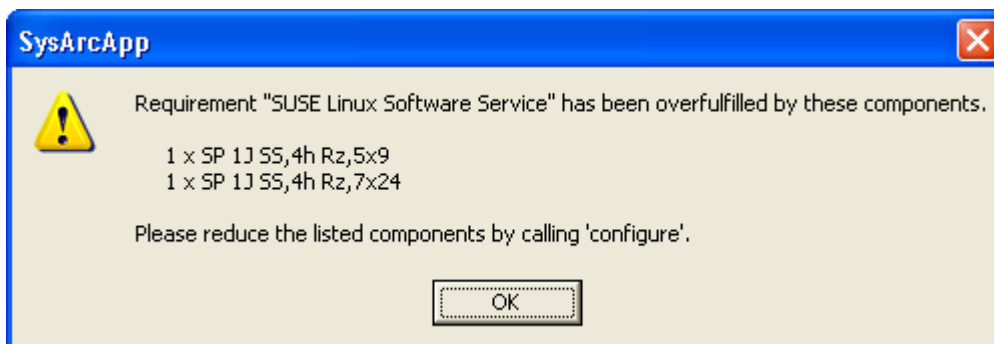
The context function 'Explain' that is available for this kind of messages provides more detailed information.

The products that solve the conflict shown are indicated when you select the context function 'Configure':



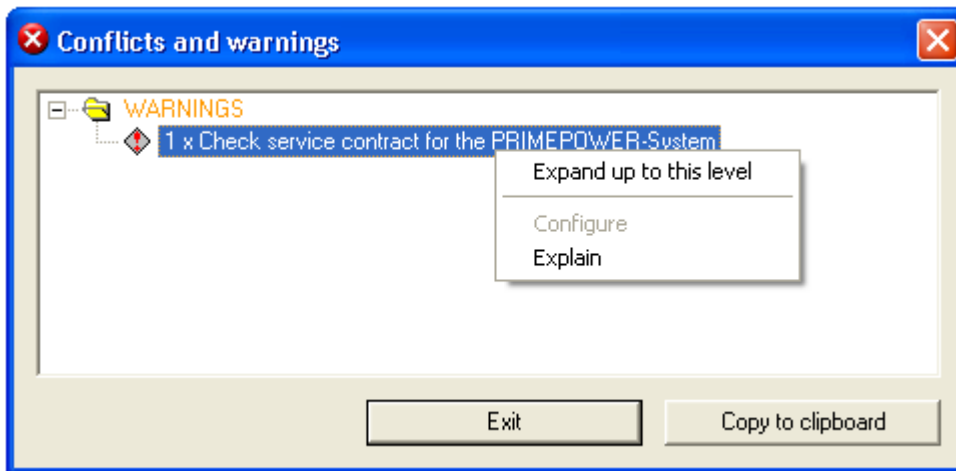
To facilitate the choice of a conflict solver its features and prices can also be shown as before. As soon as one of the components shown is added to the configuration, the conflict is eliminated.

Service overfulfillment is also detected and indicated:



Verification for hardware extensions that are subject to service

If a hardware extension (which can only be ordered as an option) that is subject to service is configured, a warning is triggered:



Since the verification of the service contract is not a configurable or insertable component, a warning and not a conflict (which could not have been eliminated) is issued.

Therefore, only the function 'Explain' is offered here as a context function. As a result, the user receives additional information as to how the problem can be handled.

Various minor changes

For SPARC-Enterprise servers

The configuration of storage modules for T5xxx systems is to be monitored better in future and tested so that the existing configuration regulations are observed in this respect. New regulations for the configuration of CPUs have also been introduced for a number of these systems, which are also to be tested in future.

For CentricStor systems

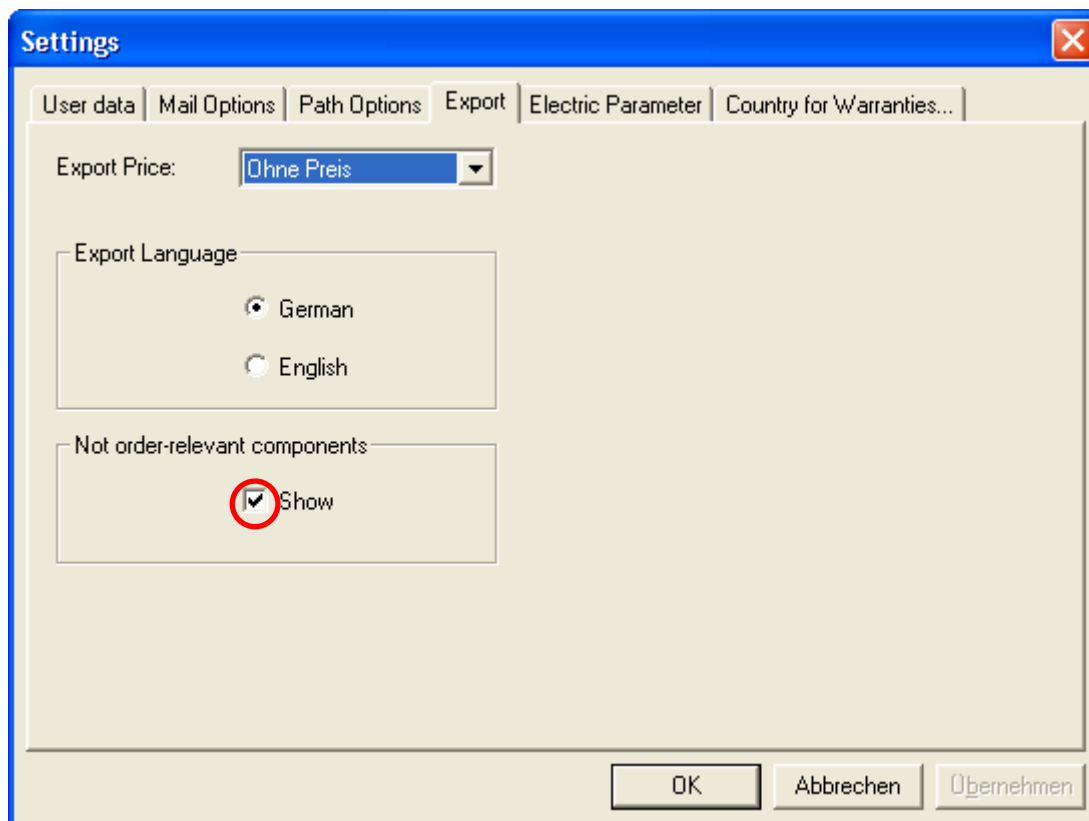
The components that are inserted as a result of the Fibre-Channel and LAN Assistants are to be better positioned in the racks in future so that the requirements for production are clearer.

Increase in the text length for cable classes

The existing restriction to 255 characters for the description text of a cable class has been lifted.

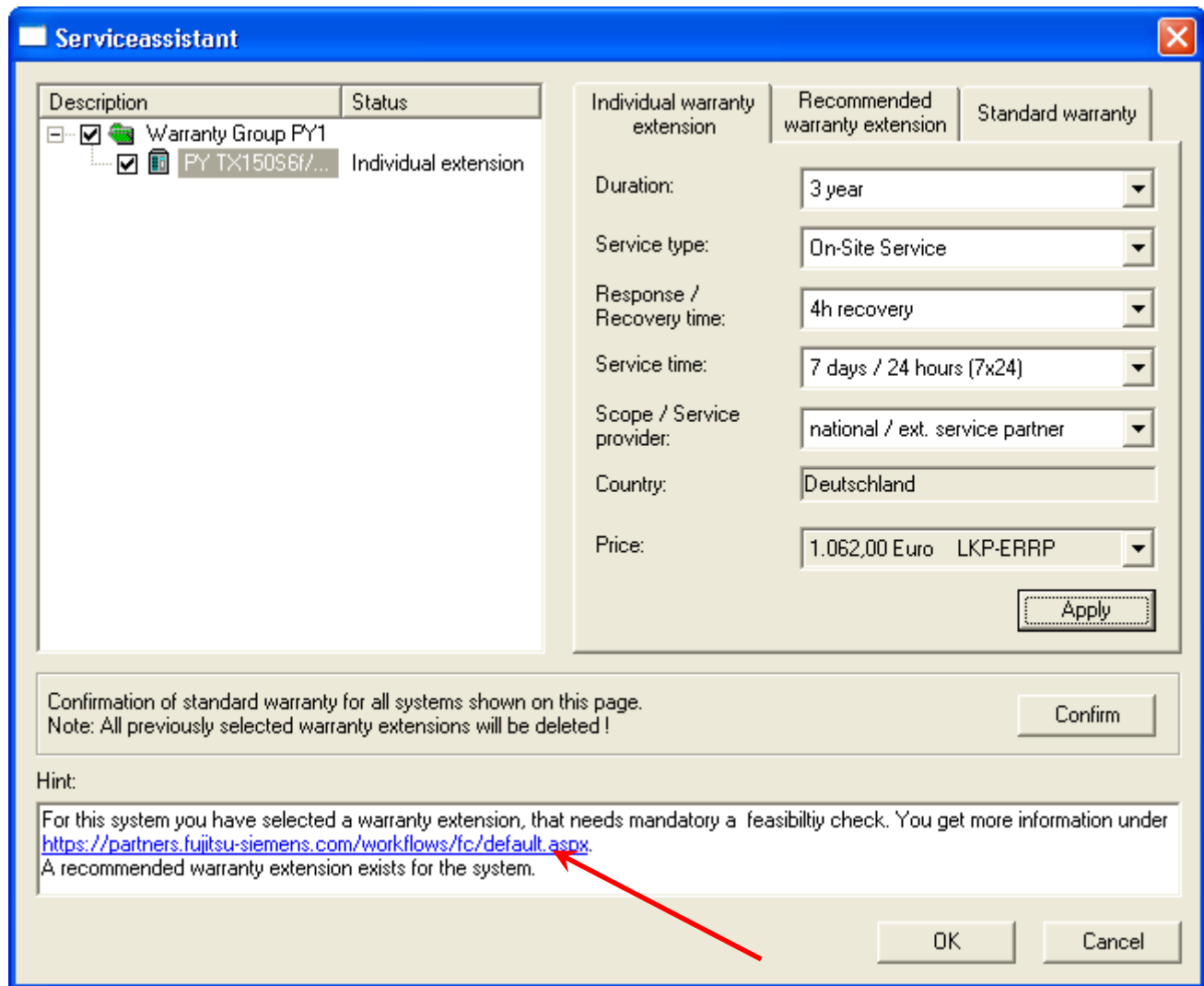
EXCEL Export alternatively with and without order-relevant components

The regulations introduced some time ago that all the components belonging to a system are shown under EXCEL Export (especially package parts and not order-relevant components), can optionally be deactivated again in future so that only chargeable components are shown under Export. However, in the age of packages this is a greatly restricted view of the configuration, because complete systems are in the circumstances no longer shown. The optional deactivation for EXCEL Export for the PC and SystemArchitect is done under 'Options - Settings'



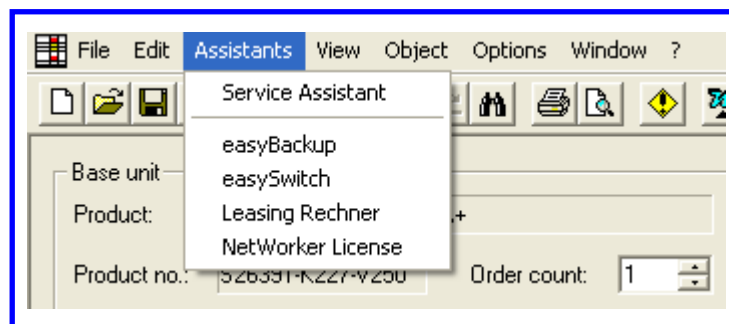
Clickable links in the hint window of the Service Assistant

You can now click on the important reference to the feasibility check for warranty extensions with a set restore time from PC and SystemArchitect directly:



Change to the menu structure in the PC-Architect

The menu option *Assistants'* has been included in PC-Architect:



The function *'Country for warranties'* has been moved from the menu *'Edit'* to the menu *'File'*.

For further Information:

German/English https://partners.fujitsu-siemens.com/order_supply/configurators/

German: <http://www.fujitsu-siemens.de/Konfigurator>

English: <http://www.fujitsu-siemens.com/Configurator>

Training Offer

Training programs are offered on the topic of 'Configuration Tools' and can be adapted to meet the needs of the individual participant group.

Course objectives: To provide a functional and performance overview
To create simple and complex configurations
To provide practical experience of tool handling through exercises

Target group: Technical consultants, sales employees (with or without previous knowledge of the tool) with the relevant product know-how

Language: German and English

Duration: 3 hours to 2 days (depending on individual needs)

Possible topics: Selection of systems, add-on and upgrade components
Configuration of individual systems
Assembly of racks and rack modules
Handling offer packages
Special functions for PRIMERGY, PRIMEPOWER, PRIMEQUEST, SPARC-Enterprise and CentricStor
External cabling / Handling the cabling wizard
Plausibility checking
Creation and use of configuration templates
Import and export functions

Contact: christian.buechner@fujitsu-siemens.com

Registration for 1-day standard training: <http://www.fujitsu-siemens.de/rl/workshops/architect/>

(The standard training courses are only in German, in English on request)