

INFORM

New Version 8.1 **PC and SystemArchitect** Planned Release: 07. Nov '08

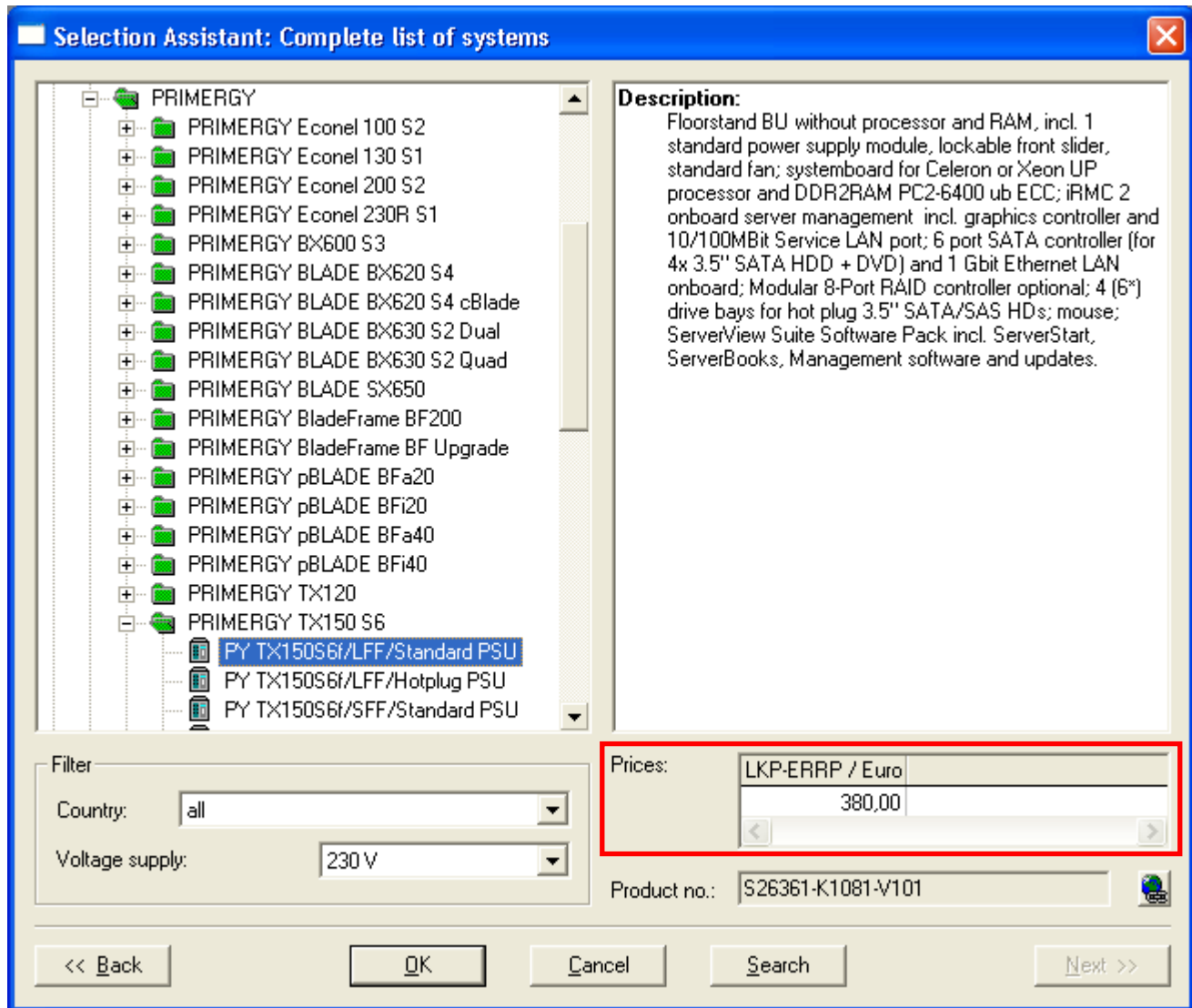
Issue	October 2008
Category	PC / SystemArchitect
Content	Tool Change
Distribution	External / Internal
Pages	9

Overview of the new functions / **Benefits for the user**

- **Display of sales prices for system selection in the PC Architect**
Better support during system selection
- **Presetting of electrical connection types for rack servers**
Best possible utilization of fail-safe power cabling
- **Modified handling of packages that only contain one base unit**
More intuitive operation and discontinuation of preferential treatment
- **Various minor changes**
Increase user-friendliness

Display of sales prices for system selection in the PC Architect

The new version permits you to view the sales prices of a base unit as early as system selection, consequently providing further support through another decisive attribute. In contrast to the System Architect, which shows the price of the selected system in a price window that can be optionally opened; this information is offered directly in the selection window in PC Architect.



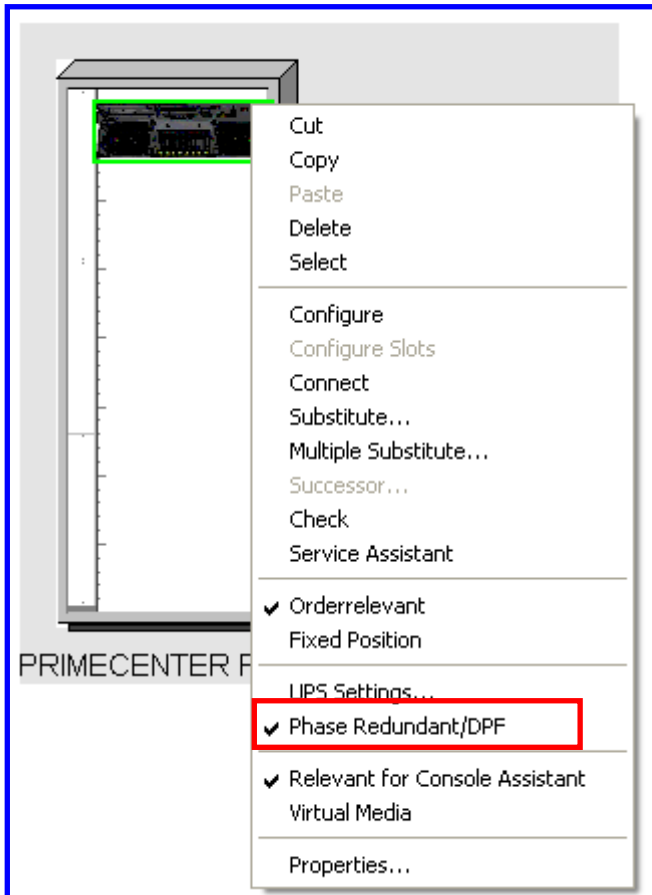
The example shows the complete list of all systems. The view of the "Selection Assistant" is a similar display. If several different sales prices exist for a system, they are displayed next to each other. If the display area is too small for the number of prices to be displayed, the horizontal slide bar becomes active, with which the contents of the price display can be moved to the left and to the right. Since only one price has been assigned in the example shown, the slide bar is deactivated and is in grey.

Presetting of electrical connection types for rack servers

The delivery of base units (rack modules) differs with regard to the number of power supply units:

- Some are supplied with one or more power supply units, but no redundant power supply units are planned
- Others are supplied with one or more power supply units and the user has the option of also configuring any redundant power supply units that are required.
- There are systems that are already equipped with the maximum number of power supply units, which therefore already include redundancy.

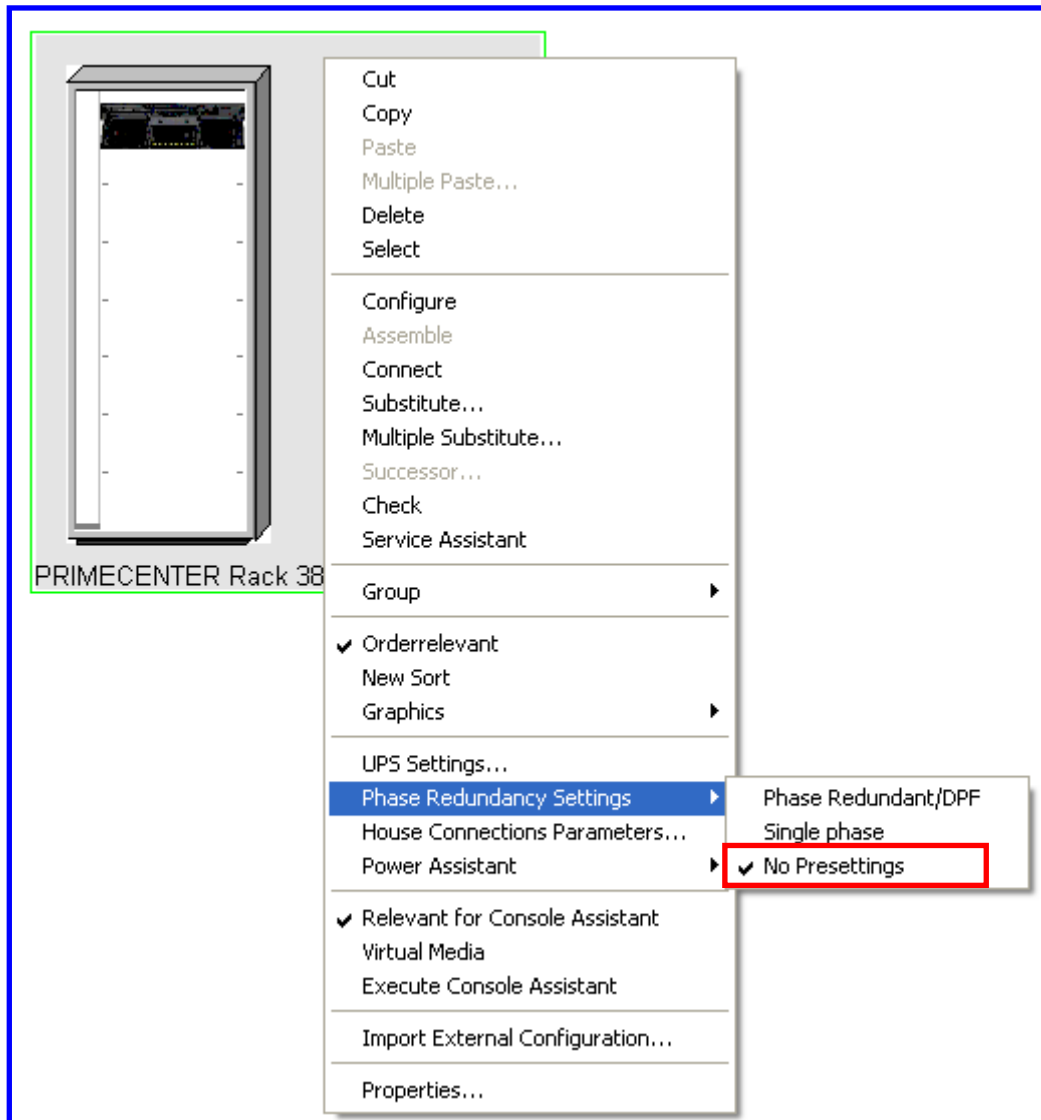
A phase redundant type of connection (distribution of the power supply unit connections to different phases) is only possible if redundant power supply units are available. To protect the user against incorrect cabling (or abort) of the Power Assistant, phase redundancy has until now been deactivated to begin with. Consequently, systems of the previously mentioned 3rd group (already equipped with redundant power supply units) were also not automatically connected on a phase-redundant basis. To achieve this the user had to manually activate phase redundancy on the rack module.



With the new version phase redundancy is automatically activated for systems of the 3rd group so that the best possible connection technology is always ensured for these systems by the Power Assistant without the user having to intervene.

As a result of introducing the "preset status" for phase redundancy with servers it was necessary to adapt the context function on the rack. Here it is possible by means of a mouse click to activate or deactivate phase redundancy for the entire rack, including all of its rack modules. This setting also brings about inheritance to all rack modules that are subsequently newly added to the rack.

However, in order to support an individual and potentially different setting on the rack modules a third setting option has been implemented. The 'No Presettings' setting is set as a default to begin with and means that each power consumer that is newly introduced into the rack retains its setting as regards phase redundancy and that this is not overridden by the rack presetting.



Modified handling of packages that only contain one base unit

Introduction

Dueing package introduction it was assumed that most packages do not contain only one, but several systems. In general, when adding a package to a configuration the contents of the package are "dumped" into the configuration as visible components, whereas the package itself only appears marginally. It is only relevant for the correct price. All other processing steps in terms of the configuration are performed with the package contents.

These package contents exist as so-called 'blue components', which all have no prices of their own because the costs of all the components are taken into consideration through the selection of the package (and the associated package price). In this sense it is logically consistent for it not to be possible to delete a package component separately - in this case the entire package has to be deleted.

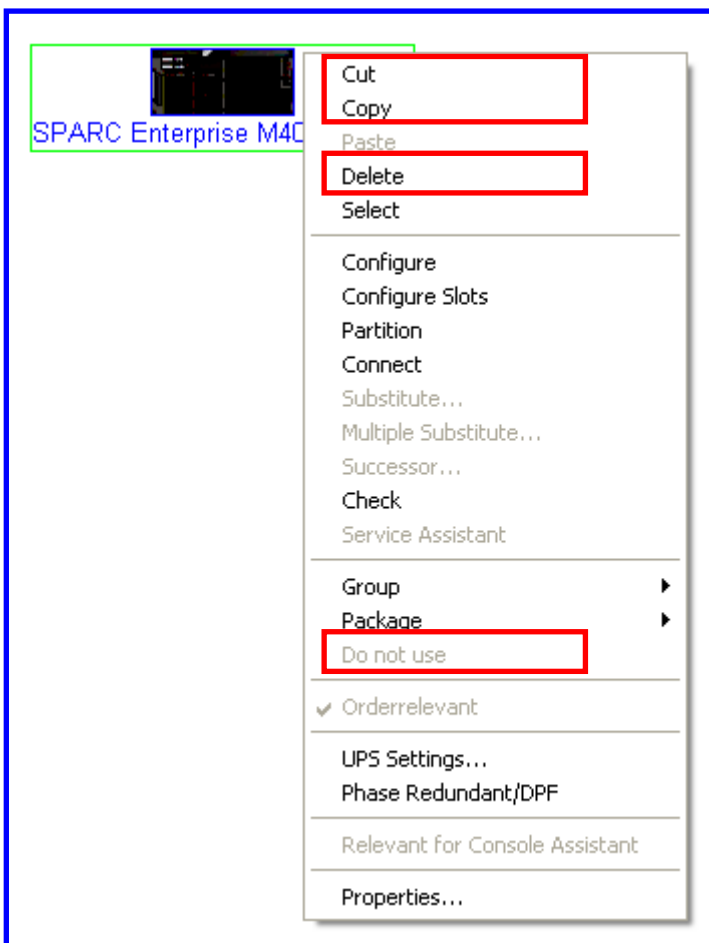
However, in order to have a control option it is possible to mark a package component with 'Do not use'. In this case the component is graphically removed from the configuration, but it is always supplied so that it can be used elsewhere (outside this configuration). Whether a component can be marked with 'Do not use' or not is documented in the database and is basically controlled by logistics dependencies.

Packages with only one base unit

Experience has shown that there are many packages that consist of only one base unit (and the relevant built-in components). In this case, it is not easy for the user to see whether it has selected a package or a normal basic variant. In the various views of the System Architect the systems are presented like normal systems (with the exception of a small blue frame). However, as mentioned at the outset, a smaller number of functions are available for package components. These have resulted time and again in operating errors or problems of understanding.

For this reason the following functions are permitted with the new version 8.1 for package components if the package consists of only one base unit (plus more built-in components):

- Cut
- Copy
- Delete



In this regard, the selection of one of these functions does not apply to the package components - on the contrary, it applies to the package directly. Ultimately, the function 'Delete' e.g. - executed on the only system of a package - is intended to delete the system and thus the entire package. The same applies to functions 'Cut' and 'Copy'. All three functions are also available as before in the sub-context menu 'Package'.

The 'Do not use' function, which is now always offered for package components, controls - as mentioned at the outset - the option of putting the affected components 'to one side'. In this example this is not permitted, therefore the function is grey.

Various minor changes

Text add-on in the EXCEL export and parts list in the specification of the backup time for UPS secured systems

In the event of a rack configuration with UPS backup, the specification of the backup time* will in future be extended to include information concerning the topic 'Battery ageing'.

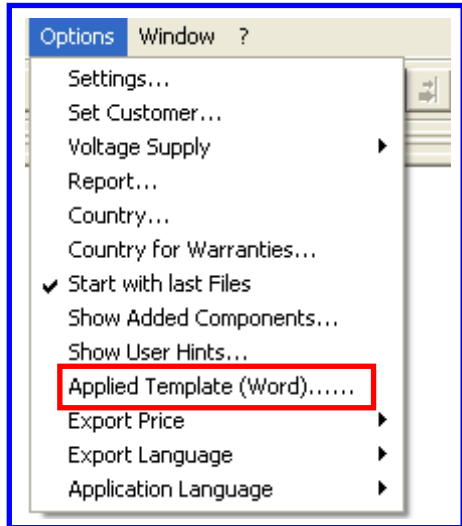
	A	B	C	D	E	F	G	H	I	J	K	L	M	N	O	P
1	Rack:	PRIMECENTER Rack 38HU, 1100mm deep														
2	Component name:	APC Online UPS 3kVA / 2.1kW R/T														
3	Backup time (h:m)*:	00:36														
4	Connection to house network:	AC CEE 1x16A														
5	Phase:	L1 / 230 V														
6		VA	W	A												
7	PY RX600S4_1	1305	1150	5,67												
8	Sum	1305	1150	5,67												
9																
10	USV/Multiple socket outlet planning data	3000	2100	13,04												
11																
12	Free capacity	1695	950	7,37												
13																
14		* The indicated runtime is guaranteed in the first 2 years at an ambient temperature of 20° Celsius. These batteries lose capacity over time, the extent of which being mainly influenced by the cell temperature. After 3-5 years of use and constant 20°C the remaining runtime is 60% minimum. The higher the temperature is the higher the capacity but the lower the life time.														
15																
16																
17																
18																
19																

* Time that is available on account of the battery capacity and the electrical connection load of the power consumers to provide the connected consumers with voltage so as to enable them to shutdown in a controlled way

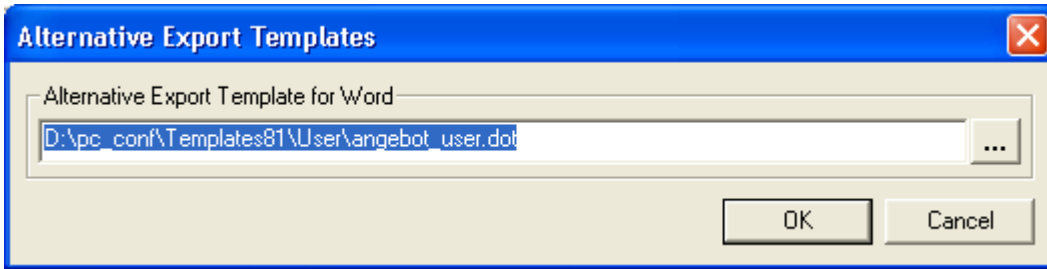
Changeable WORD template

With some users separate template files for WORD export are used instead of the templates provided by Fujitsu Siemens Computers (FSC). These were derived from the templates originally developed and distributed by FSC so as to integrate e.g. own company logos and other design modifications.

In order to make better use of these self-created templates in PC and System Architect in future a separate setting option has been created for these templates. In the 'Options' menu a new function is available, which can be used optionally.



After selecting the function, the name of the template file to be used in future is queried in another dialog:

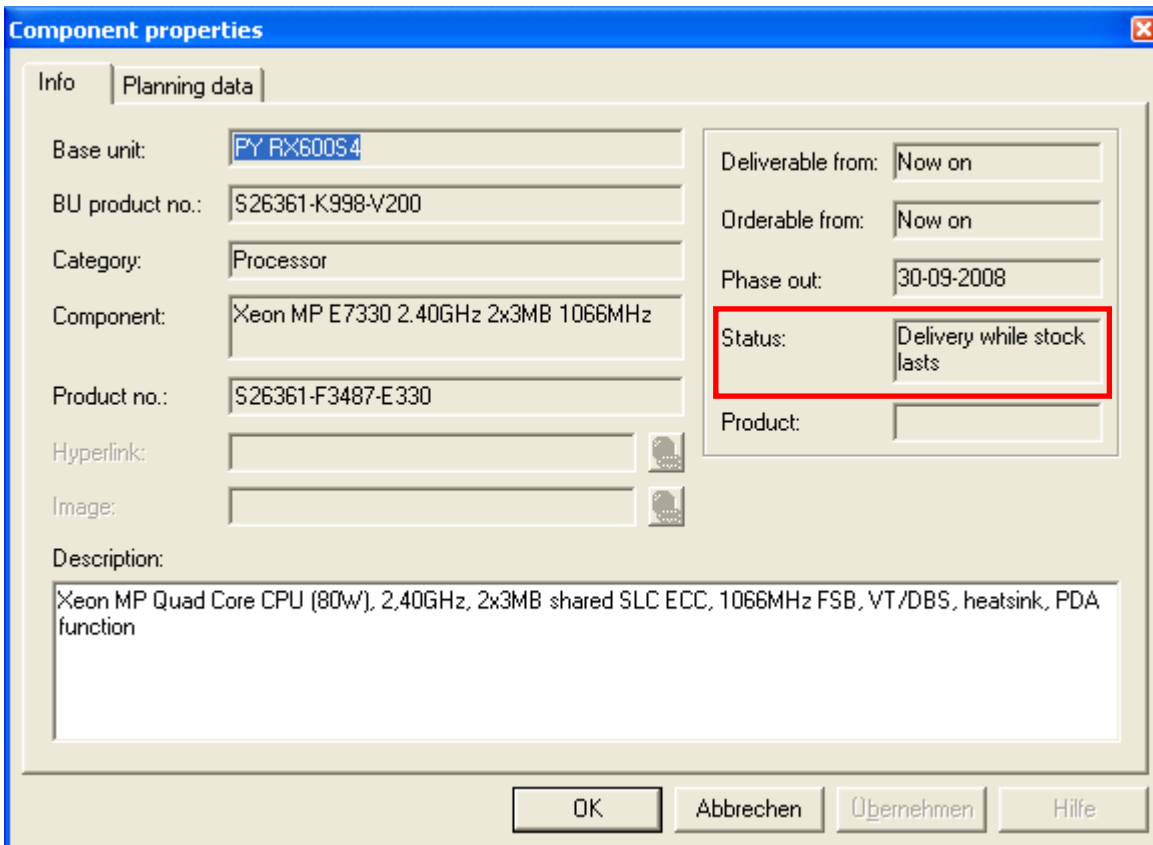


As soon as an entry is available here, this template file is used when WORD export is selected. The functional guarantee of this template lies with the author of the template - not with FSC.

In order to use the original FSC template again instead of the set user-specific template this entry should be marked and deleted by means of the context menu (selected by means of a right mouse click)

2-line status display in the properties dialog

To improve the readability of explanations on the various sales statuses the appropriate display field in the properties dialog has been increased to 2 lines:

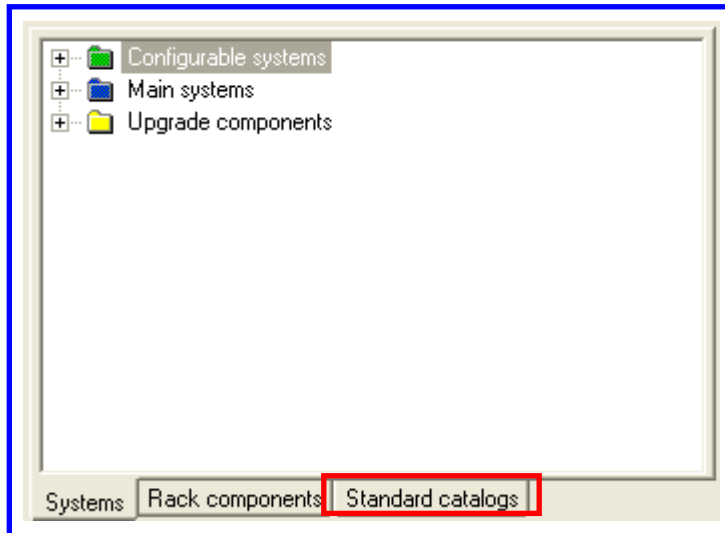


The example shows sales status 60 of a processor that can be configured for a PRIMERGY RX600S4.

Modified tab name for 'Solutions'

The FSC solution offering is constantly being extended through the introduction of packages. By selecting an order number the user receives several different HW components that are extended by software and service products. Thus, an order number as a package can contain a solution that is made up of a random number of individual components, which for the most part can also be ordered separately - in order e.g. to further extend the package.

For this reason the tab name "Solutions" in the system selection window of the System Architect has been replaced to obtain better separation between the solution packages (selectable under 'Configurable systems') and the (standard) catalogs provided by FSC. The catalogs also consist of a large number of components that can be added to the configuration by means of a single mouse click (drag & drop) - but they are not set up as a package with a superior order number, they correspond to a configuration (template) already prepared in advance by FSC, which can be extended or reduced by the user without any limitations. On the other hand, it is not possible to reduce the components for packages.



For further information:

German/English <http://partners.fujitsu-siemens.com/com/order-supply/configurators>

German: <http://configurator.fujitsu-siemens.com/public/>

English: http://configurator.fujitsu-siemens.com/public/public_en

Training Offer

Training programs are offered on the topic of 'Configuration Tools' and can be adapted to meet the needs of the individual participant group.

Course objectives: To provide a functional and performance overview
To create simple and complex configurations
To provide practical experience of tool handling through exercises

Target group: Technical consultants, sales employees (with or without previous knowledge of the tool) with the relevant product know-how

Language: German or English

Duration: 3 hours to 2 days (depending on individual needs)

Possible topics: Selection of Systems, Add-On and Upgrade components
Configuration of individual systems
Assembly of racks and rack modules
Handling offer packages and included components
Special function for PRIMERGY, PRIMEPOWER, PRIMEQUEST, SPARC Enterprise and CentricStor
External cabling, LAN, KVM and power assistant
Plausibility checking
Creation and use of configuration templates
Import and export functions

Contact: christian.buechner@fujitsu-siemens.com

Registration for standard training: <http://www.fujitsu-siemens.de/rl/workshops/architect/>
(The standard training courses are only in German, in English on request)