

Inform

We make sure



New Version 7.2

PC- and SystemArchitect

Planned Release: 8th August, 2006

Issue July 2006

Category PC- / SystemArchitect

Content Tool Changes

Distributed External / Internal

Pages 8

Overview of the new functions / [benefits for the user](#)

- Introduction of the cabling assistant for CentricStor (CS)
[Complete FibreChannel and LAN cabling for CS configurations at the touch of a button](#)

Cabling assistant for CentricStor (CS)

Introduction

Configuration of packages has been enabled with release of Version 7.1 of the PC- and SystemArchitect. The first orderable packages are solutions from the CS arena. Because these packages can in principle be expanded by the user (addition of ICPs, IDPs, TVCs, etc.), it makes no sense to include cabling in the package because it would always be incomplete. Consequently, no cabling is contained in the CS basic packages. Cabling must be carried out manually by the user after the configuration has been expanded by hardware.

The following general sequence has proven expedient in configuration:

- Selection of the basic package
- Addition of all additionally required base units
- Individual configuration of each base unit with built-in components and options
- Addition of the necessary add-on products
- Checking of the configuration and resolution of all hardware conflicts
- External cabling
 - Data cabling for FibreChannel, LAN and SCSI
 - KVM cabling
 - Power cabling
- Rechecking of the configuration

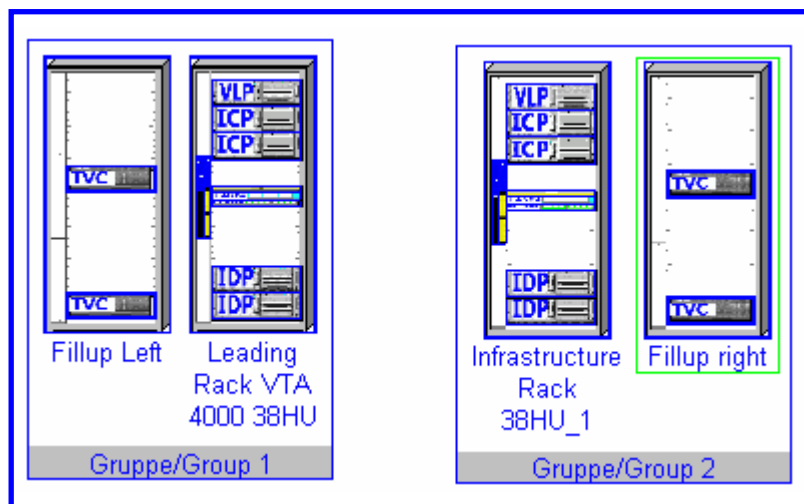
Data cabling with the assistant

The following functions are carried out by the assistant:

- Connection of all CS processors and TVCs to the switches (FC and LAN)
- Adding of all the additionally required switches and GBICs (FC)
- Interconnection of the switches (FC and LAN)
- Redundant FC cabling and then
- Non-redundant LAN cabling
- Existing cabling is disconnected; the existing cables are reused where technically possible
- Generation of a detailed journal listing all the added components

Calling the function

The assistant jointly processes all racks and the components in them within a location. These are combined in groups.



That means the function is only available if one (or two) groups have been selected.

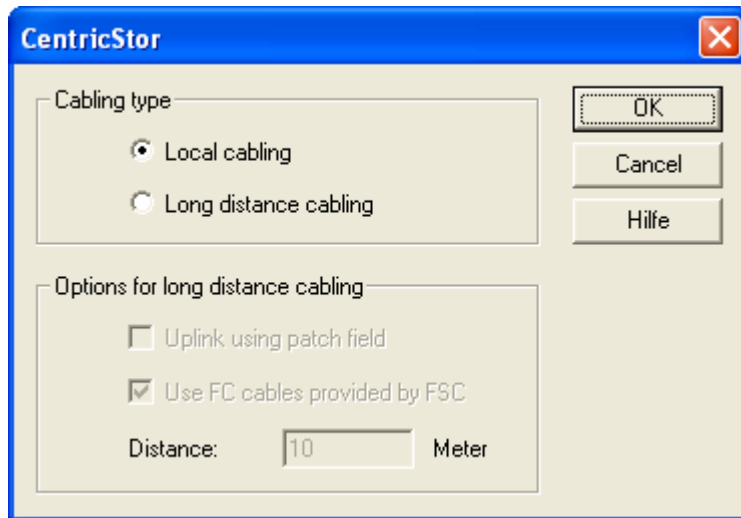
- If one group is selected, internal group cabling is carried out.
- If two groups are selected, they are first cabled internally and then connected to each other.

The function is only available under the menu item **Assistants – CentricStor FC/LAN Assistant**.

Continued: Cabling assistant for CentricStor (CS)

Connection of 2 groups

If 2 groups are selected, the assistant creates additional connections between the leading racks of the respective groups. Since the distance between the groups is not included as a feature in configuration, an additional query is issued in this case.



Local cabling

This must be selected if the two groups are at one location, in the same room and arranged next to (in the direct vicinity of) each other. The options for long distance cabling are then disabled.

Long distance cabling

This must be selected if the two groups are not in the direct vicinity of each other. The distance is greater than 10m. In this case, the redundant FC cabling requires 2 FC switches in each group. These are added if necessary. With this cabling type, the options for long distance cabling must also be selected.

Uplink using patch field

If this option is enabled, the two subsequent options are disabled.

The option "Uplink using patch field" has the effect that no connection is carried out between the groups because there are already customer patch fields installed at the two locations of the group. Since the connections available there are not known, the components are selected manually in this case. The appropriate GBICs must be selected in both groups for the FC and LAN switches existing there. The correct FC cables are selected under "Add-on products – Hardware – Cables – FC cable".

Use FC cables provided by FSC

This must be selected if FC cables that can be ordered directly from FSC are to be used for long distance cabling of the two groups. In this case, they are also added automatically by the assistant. The distance must be specified as described below so that the correct order number is determined. If the actual distance is outside the value range, FSC does not offer an appropriate cable, meaning the cable must be requested from an external vendor. In this case, please deactivate this option.

Distance

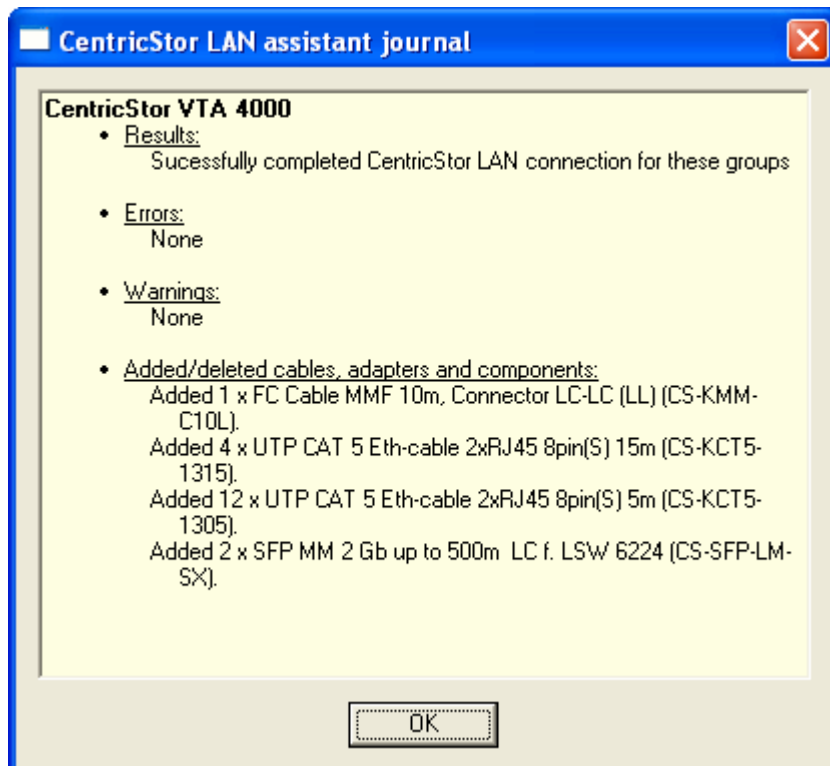
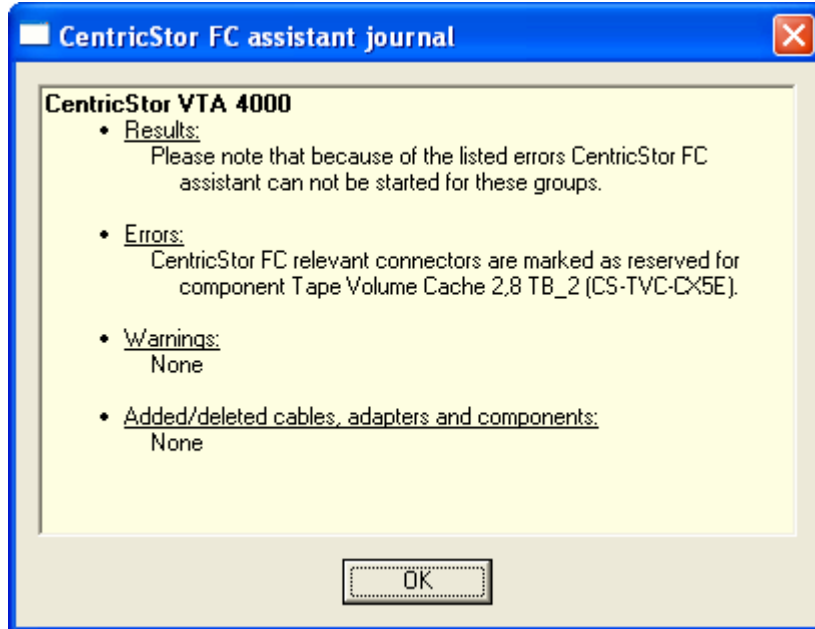
Enter the distance (in meters) between the two groups here. The value range is checked directly after this is done and a message is output if applicable. This option is only available if the required FC cables are procured directly from FSC and thus become part of this configuration (see the previous option).

If you select the *Help* button, the above explanation is displayed.

Continued: Cabling assistant for CentricStor (CS)

Journals

After the assistant has been started and any parameters entered for the long distance cabling, the system first checks whether cabling can be carried out. Cabling is then conducted in 2 sections – first FC cabling and then LAN cabling. The journal always has 2 stages and provides information on the cabling that has been carried out. This journal is independent, i.e. a completely error-free cabling can follow an FC cabling that may not have been carried out.



If patch field cabling is requested, the GBICs and FC cables for the uplinks of the switches must then be selected manually.

For advanced information and training:

Extranet <http://extranet.fujitsu-siemens.com/configurators>
Internet: <http://configurator.fujitsu-siemens.com/public>
Training: <http://www.fujitsu-siemens.de/rl/workshops/architect>
E-Learning: <http://extranet1.fujitsu-siemens.com/Systemarchitect>

Training Offer

Training programs are offered on the topic of 'Configuration Tools' and can be adapted to meet the needs of the individual participant group.

Course objectives: To provide a functional and performance overview
To create simple and complex configurations
To provide practical experience of tool handling through exercises

Target group: Technical consultants, sales employees (with or without previous knowledge of the tool) with the relevant product know-how

Language: German or English

Duration: 3 hours to 2 days (depending on individual needs)

Possible topics: System selection
Configuration of individual systems
Handling with packages and included components (CentricStor)
Assembly of racks and rack modules
Special function for PRIMERGY, PRIMEPOWER, PRIMEQUEST and CentricStor
Partitioning for PRIMEPOWER and PRIMEQUEST systems
External cabling, KVM- and power assistant
Plausibility checking
Creation and use of configuration templates
Import and export functions

Contact: christian.buechner@fujitsu-siemens.com

Registration for standard training: <http://www.fujitsu-siemens.de/rl/workshops/architect/>