

Inform

We make sure



New Version 7.25

PC- and SystemArchitect

Planned Release: October 23, 2006

Issue October 2006

Category PC- / SystemArchitect

Content Tool Change

Distributed External / Internal

Pages 5

Overview of the new functions / **benefits for the user**

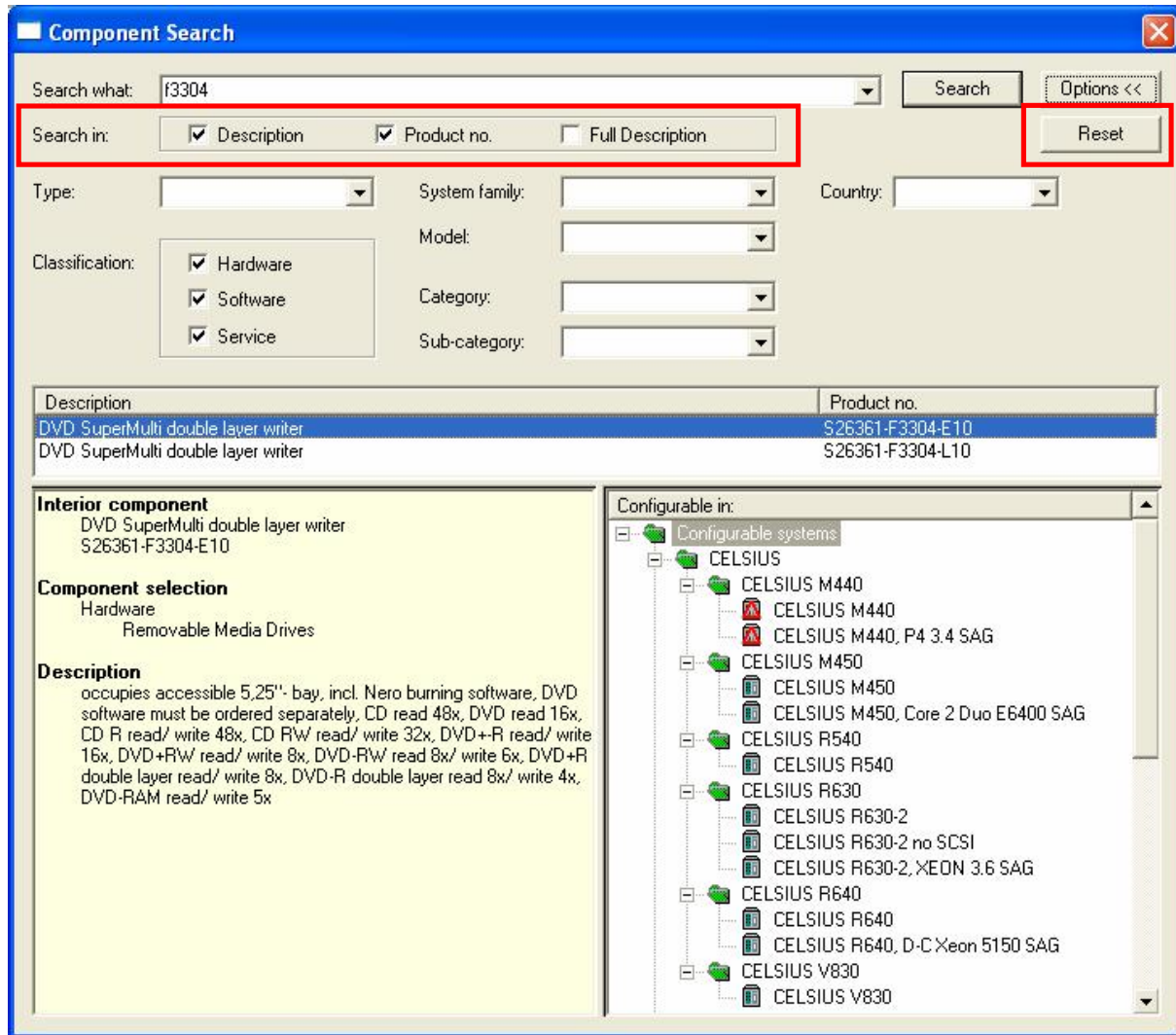
- I **Extension of the component search**
Better support in searching for components
- I **Differently colored folders in system selection**
Better differentiation in selection of systems and components
- I **Internal adaptations**
Increase in clarity, avoidance of user errors, better support in searching for components

Extension of the component search

The component search function, which allows users to find very specific components in the database using various search criteria, has been extended.

The search terms entered by users up to now have been applied implicitly to the component description and product number. This behavior can now be set in future. In addition, the text search can optionally be extended to cover the description texts defined in the properties dialog. To enable this, there are a total of three new checkboxes below the search criterion to be entered.

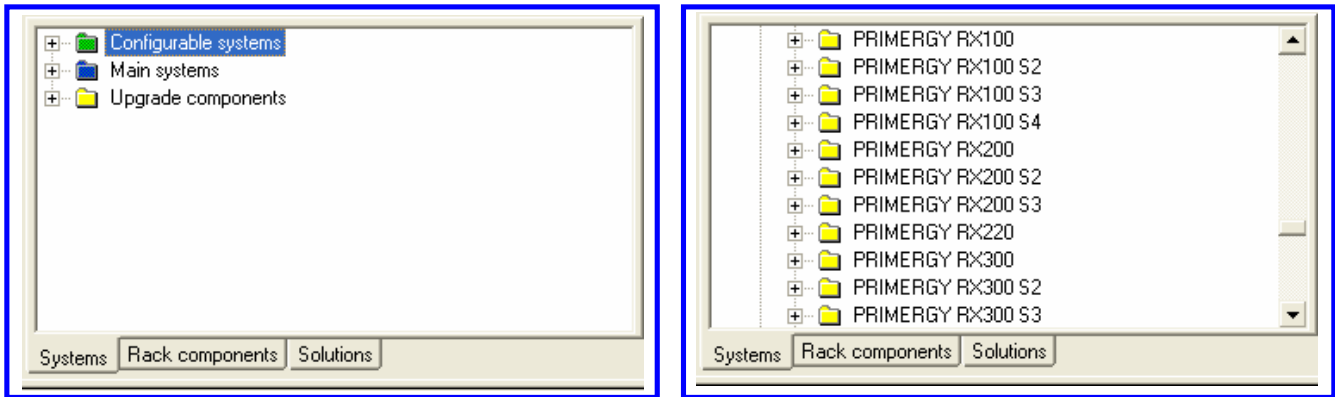
In order to enter further criteria to restrict the search, users can enter them after pressing the "Options" button. The "Reset" button has been added to allow all the entered search criteria to be deleted or reset to their original status at a click of the mouse.



Differently colored folders in system selection

To ensure that product groups can be distinguished more clearly, they will be shown in future in different colors throughout the system. As a result, the name of a family or model can be assigned unambiguously to the product group, even without the product group being displayed (because it is outside the visible window). The following colors are used:

- § Configurable systems Green
- § Main systems Blue
- § Upgrade components Yellow



In the right-hand figure, it is possible to tell from the yellow color that the models are ones that are available in the product group “Upgrade components”.

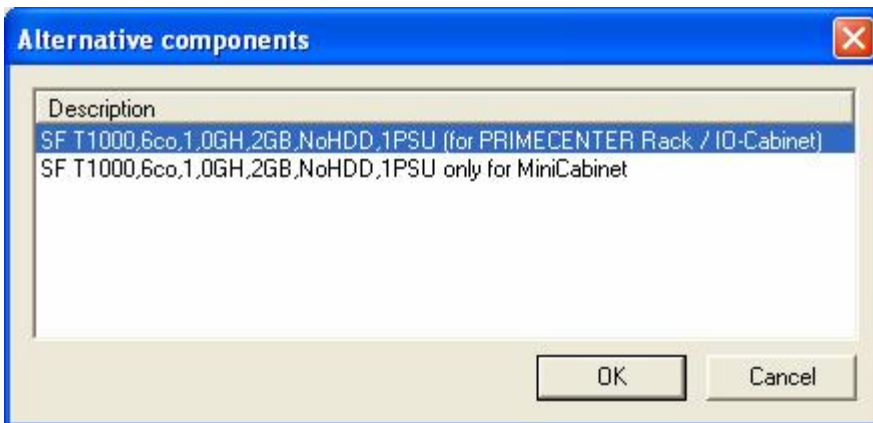
Internal adaptations

Division identifier in conflict messages and warnings

The division identifiers used at the beginning of an error text (“ST” for Storage; “PW” for PRIMEPOWER; “PY” for PRIMERGY) are no longer displayed since they had no relevance for users.

Standardization of the variant texts

When rack components are selected, there is sometimes what is called a variant query in which, for example, the mounting position of the component is to be determined.



The new version ensures that the first part of the variant description always matches the component description, whereas the additional text (which is usually in brackets) indicates the variant differences.

Correct offering of point-to-point cables

Point-to-point cabling always exists when two components arranged on the floor are connected to each other. The opposite of it is internal rack cabling, in which the cabling is only inside the rack. Cabling from rack to rack is also point-to-point cabling.

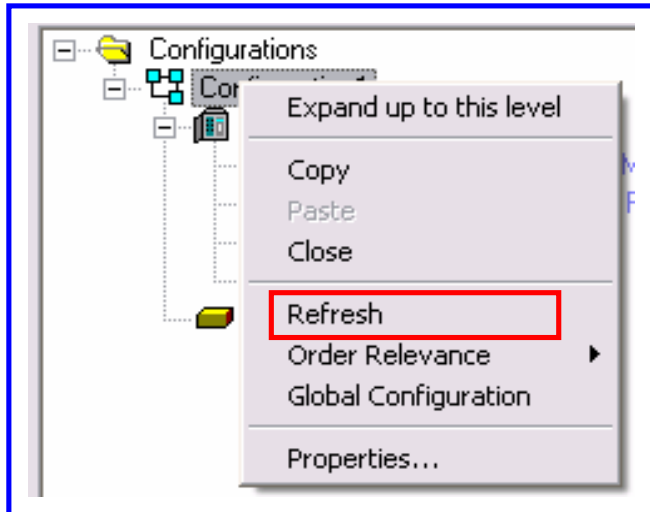
The internal selection matrix for point-to-point cables has been modified due to the fact that products from the CentricStor product arena have been newly added. This ensures that the “right” point-to-point cables are always offered.

Continuation: Internal adaptations

Correct reading of configurations that contain packages

Up to now, such configurations were only created when components from the CentricStor arena were added, since packages are only offered there.

As a result of subsequent modification of the package structure in the database, there were repeatedly problems in reading configurations that had been created earlier – they were marked as being inconsistent. The options for users to respond to these problem cases have been enhanced. To this end, the “Refresh” function in the “Configuration” window has to be executed on the icon for the configuration.



For advanced information and training:

- Extranet <http://extranet.fujitsu-siemens.com/configurators>
- Internet: <http://configurator.fujitsu-siemens.com/public>
- Training: <http://www.fujitsu-siemens.de/rl/workshops/architect>
- E-Learning: <http://extranet1.fujitsu-siemens.com/Systemarchitect>

Training Offer

Training programs are offered on the topic of 'Configuration Tools' and can be adapted to meet the needs of the individual participant group.

Course objectives: To provide a functional and performance overview
 To create simple and complex configurations
 To provide practical experience of tool handling through exercises

Target group: Technical consultants, sales employees (with or without previous knowledge of the tool) with the relevant product know-how

Language: German or English

Duration: 3 hours to 2 days (depending on individual needs)

Possible topics: System selection
 Configuration of individual systems
 Handling with packages and included components (CentricStor)
 Assembly of racks and rack modules
 Special function for PRIMERGY, PRIMEPOWER, PRIMEQUEST and CentricStor
 Partitioning for PRIMEPOWER and PRIMEQUEST systems
 External cabling, KVM- and power assistant
 Plausibility checking
 Creation and use of configuration templates
 Import and export functions

Contact: christian.buechner@fujitsu-siemens.com

Registration for standard training: <http://www.fujitsu-siemens.de/rl/workshops/architect/>