

Inform

We make sure



New Version 7.1 PC- and SystemArchitect Planned Release: 29th May, 2006

Issue May 2006
Category PC- / SystemArchitect
Content Tool Changes
Distributed External / Internal
Pages 8

Overview of the new functions / Useful for the user

- **Changed query dialogue after starting the PC-Architect**
Enhanced user guidance – accessories can be easily found
- **New indication of Lifecycle and component information**
Quick and clear information about availability of all components
- **Changed indication within the configuration view**
Better overview with selection of options and accessories
- **Integration of CentricStor Virtual Tape Appliance**
All CentricStor-Components can be configured within the SystemArchitect /
Extension of configuration with other FSC components

Due to the huge number of functionality changes, Virtual Classroom sessions are offered:

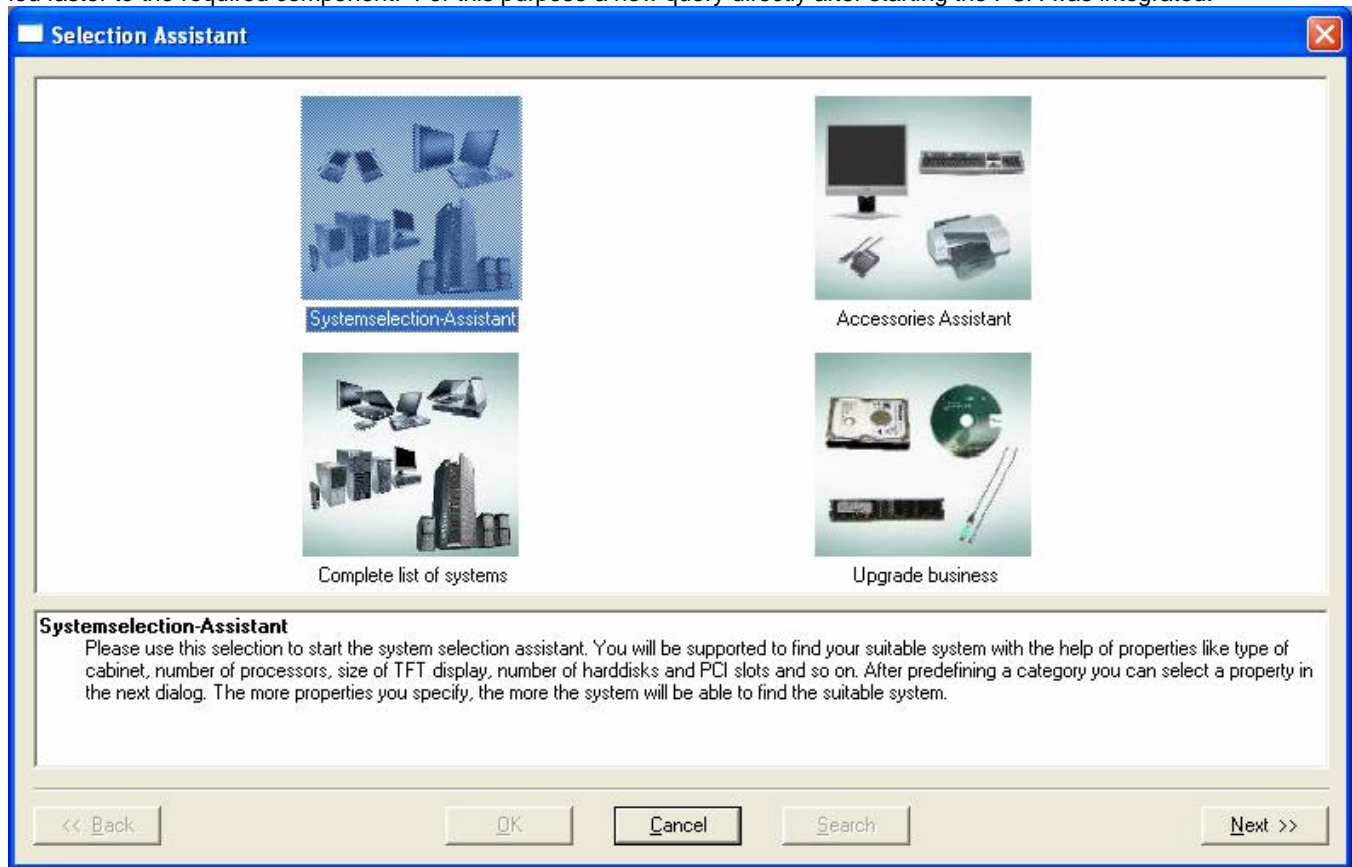
- **01. June 2006 in German**
- **13. June 2006 in English**

You can register here:

http://extranet.fujitsu-siemens.com/products/consulting/server_trainings/vcs/actual_vcs.htm

Changed query dialogue after starting the PC-Architect

Particularly for the users of the PC-Architect (PCA) the start dialogue was changed, so that new users or less practice users are led faster to the required component. For this purpose a new query directly after starting the PCA was integrated.



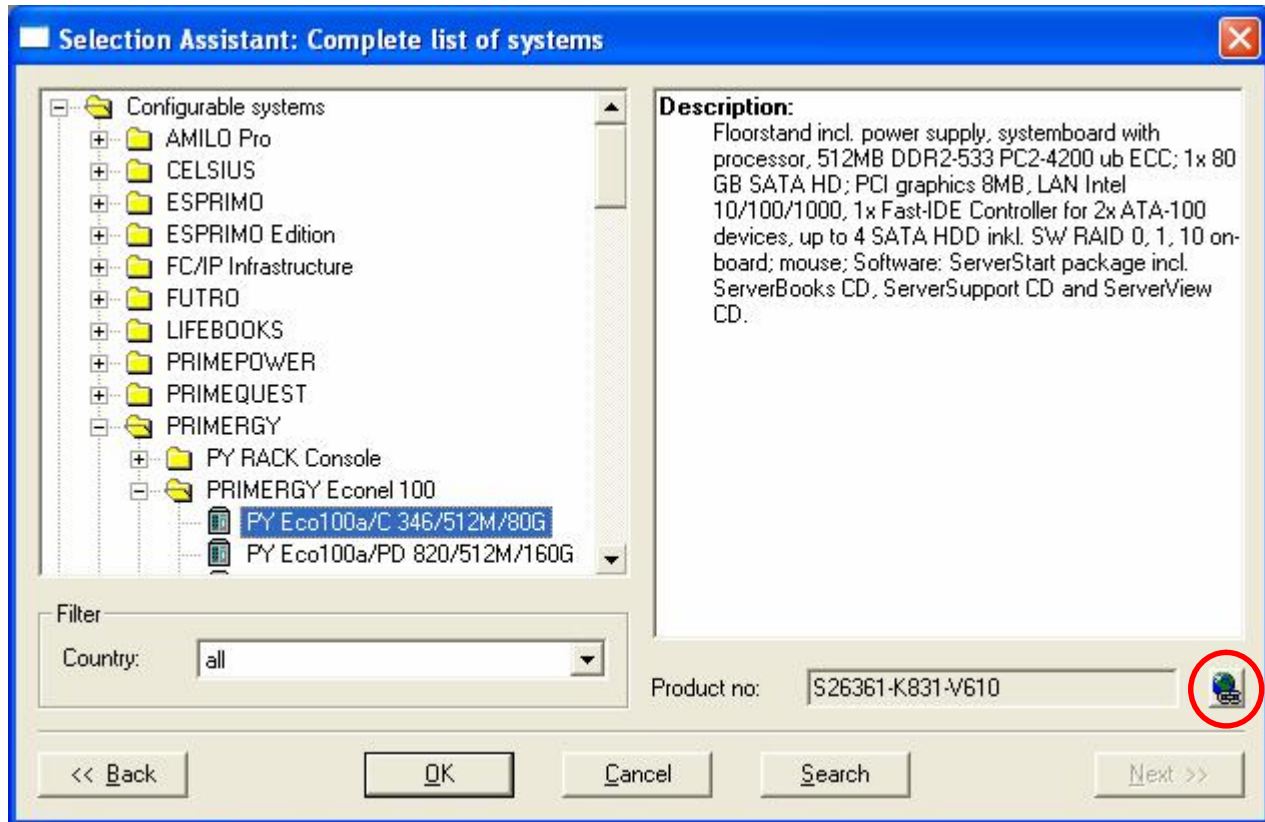
In this first query the user will be asked directly, which component he needs. Within some ranges the following selection will be supported by the assistant. When selecting one of the 4 ranges, a supplementary text will be indicated in the lower part of the window, which will give additional assistance.

The following dialogue will be started by double clicking one of the 4 symbols or after selecting a category by clicking the button Next.

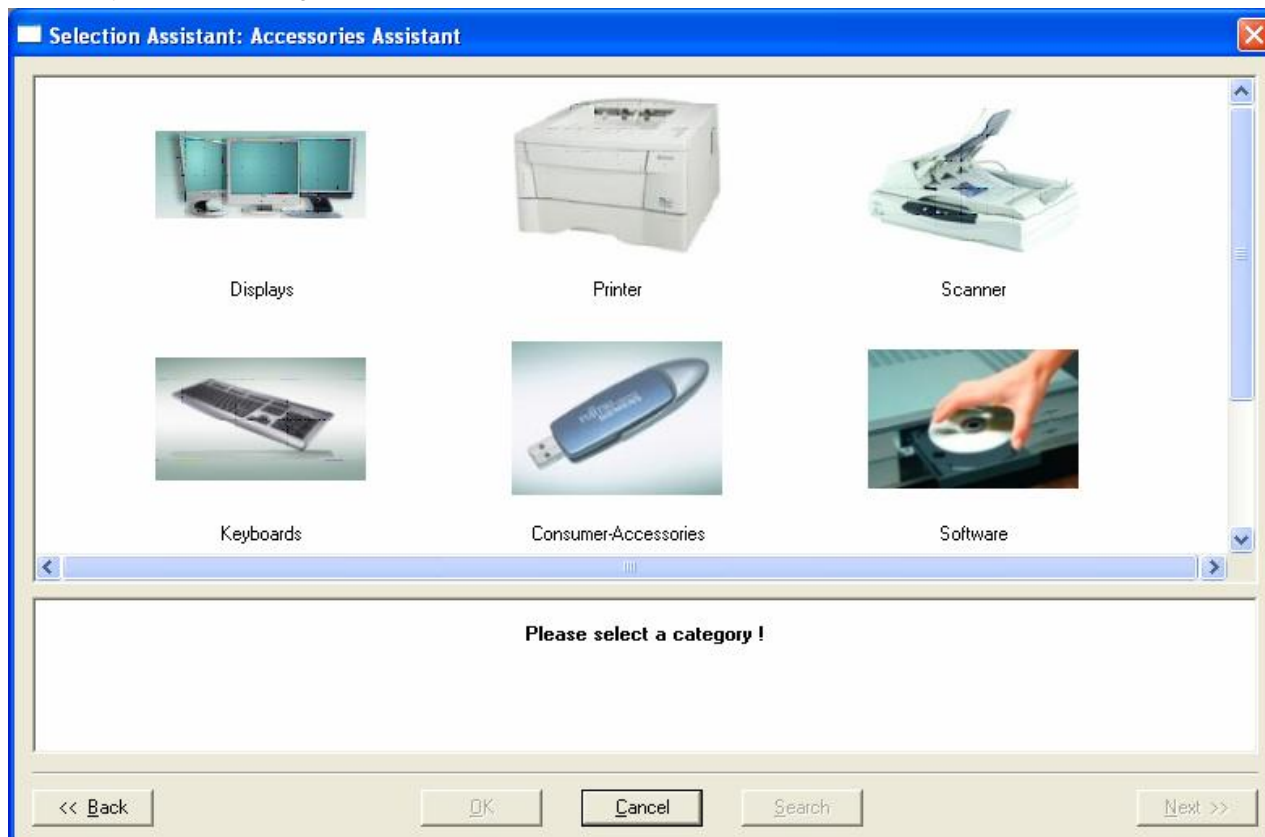
In the System Architect the system selection assistant will be available exclusively , which will be started via the menu „Assistant“ or by clicking the corresponding icon.

Changed query dialogue after starting the PC-Architect

For all further ranges in which systems (basic units) can be selected, a new surface „Show Information via www“ was added, which evaluates the web address deposited there for the selected system and which starts the corresponding web browser. Thus the user is able to get information about the system before getting started with the system selection.



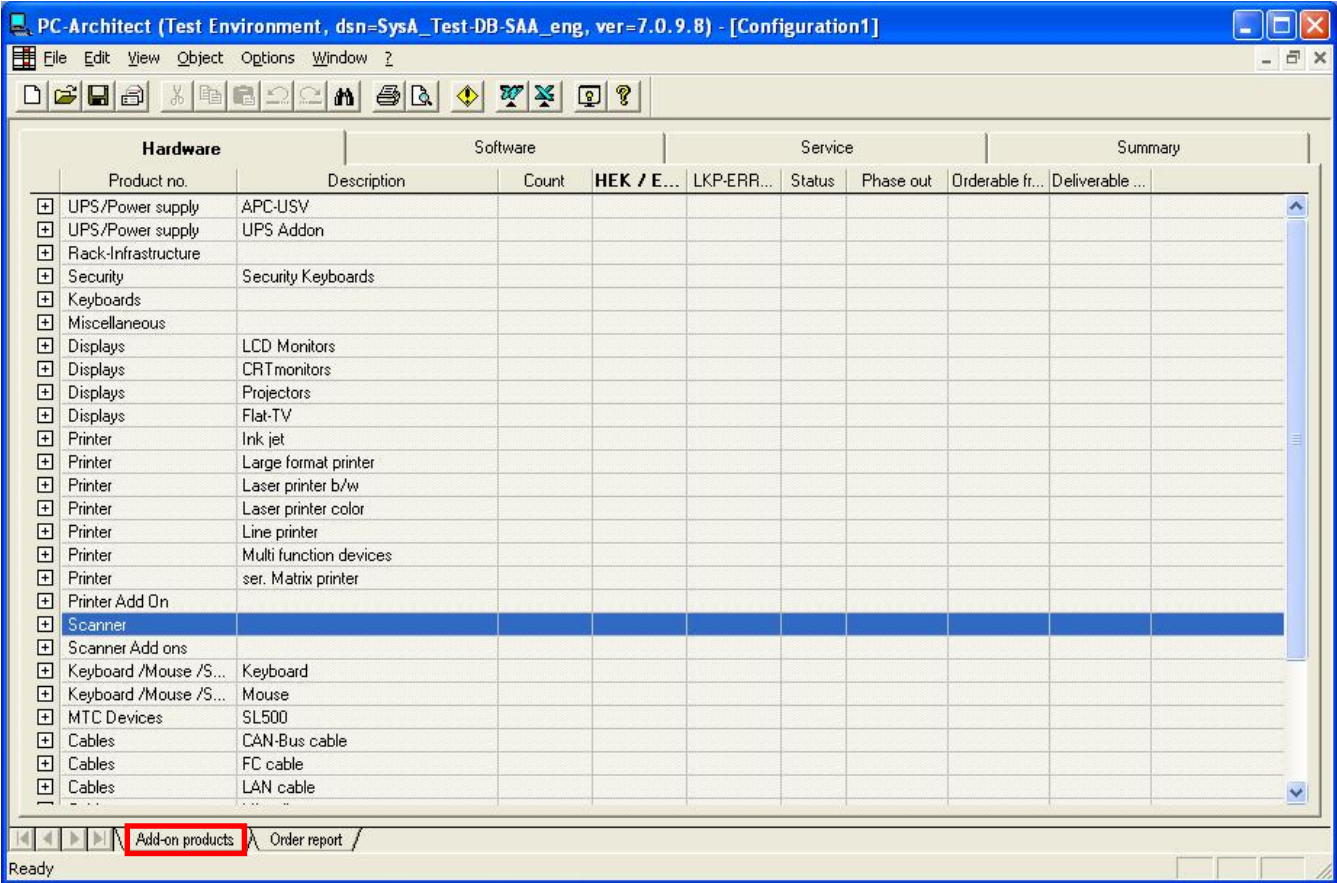
A further innovation will be the **Accessories Assistant** which is mainly for those users that want to order only accessories (without systems). Following window will appear:



Here the user selects the corresponding group of components. He will confirm his selection by double-click or by clicking the button "Next".

Changed query dialogue after starting the PC-Architect

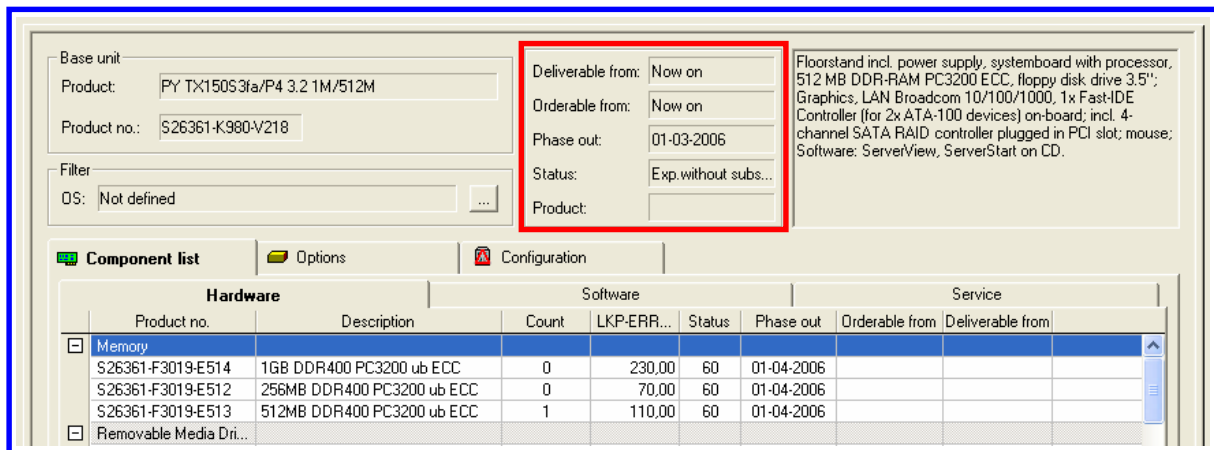
After that, a new configuration (SAR file) is opened and the tab „Add-on products“ will be selected automatically. The positioning within the add-on products takes place in accordance with the selected category. The SAR file does not contain any system! If necessary, this can be added later via the function „Edit – Insert System“. The summarized representation of the categories will be explained additionally within the topic changed indication within the configuration view.



New indication of Lifecycle and component information

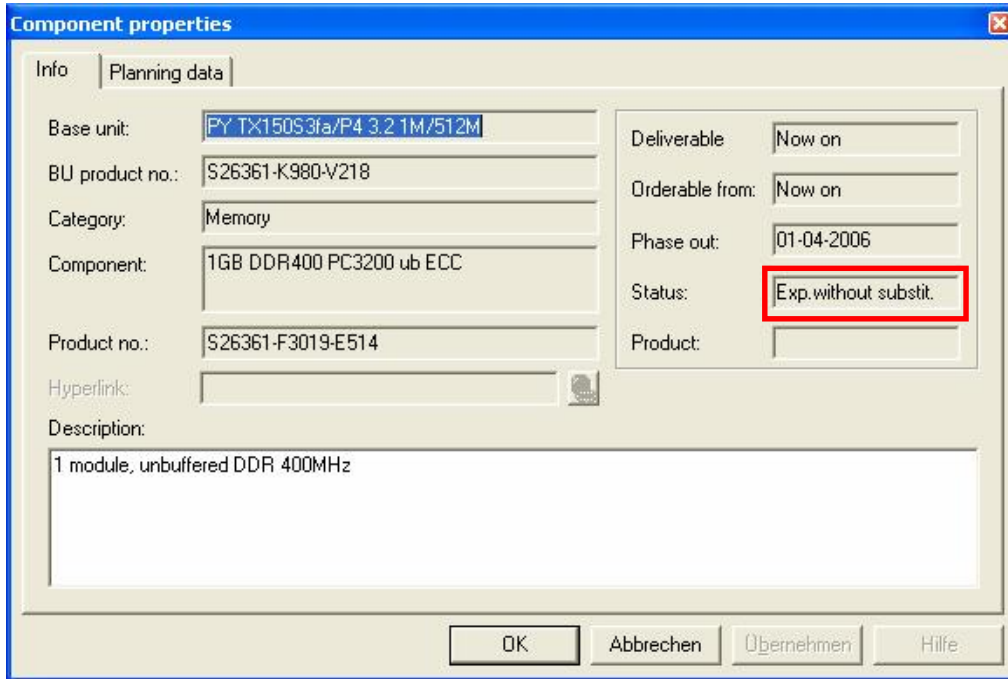
The extension of the indicated information took place in several places:

- The indication of the availability and the sales status of the base unit takes place directly in the configuration view of the corresponding system. The user does not need to activate the tab „Configuration“. The sales status will be indicated in text form, not as number.



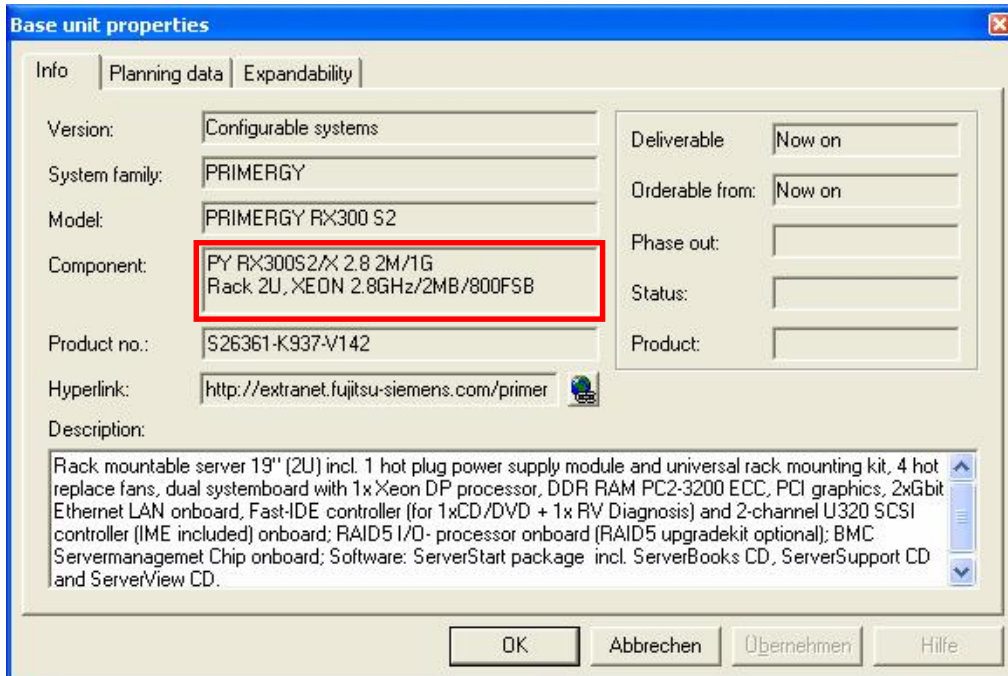
New indication of Lifecycle and component information

- The indication of the availability and the sales status of **build-in components, options and accessories** take place in the columns of the configuration view as before. Additionally the property dialogue of the component was changed; the sales status will be indicated in text form, not as number.



The example shows the main memory of the system shown before. In the configuration view the memory module is indicated with the status "60".

- Additionally the field size of the component name was doubled in the property dialogue. Thus the user will get more detailed information about the selected component.



Changed indication within the configuration view

For a clearer overview, the components within a category can be hidden. The summarized indication will be shown with a small plus sign, which is placed in front of the category. By clicking the plus sign all components will be shown. This "opened" indication will be indicated by a small minus sign, placed in front of the category. An additional click on the minus sign will close this indication again.

With pressed CTRL-key and a click on any plus or minus sign, all categories in this view will be shown „opened or closed“.

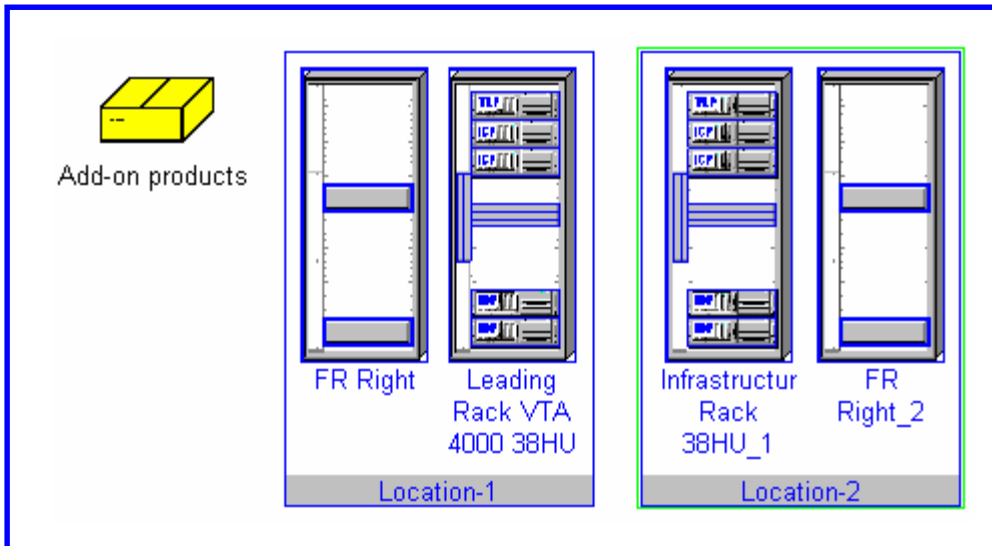
Hardware		Software	Service	
Product no.	Description	Count	LKP-ERR...	Status
+ Memory				
+ Removable Media Dri...				
+ Hard Disk Drives				
- SCSI/RAID/SAS con...	SCSI Controller			
	S26361-F2399-E1	0	210,00	
	S26361-F2399-E2	0	210,00	
+ SCSI/RAID/SAS con...	RAID Controller			
+ SCSI/RAID/SAS con...	Cable			
+ Communication/Netw...				
+ UPS/Power supply	Power pack			
+ OneBox-Keyboards				
+ PRIMERGY-Software	Manageability Hardware			
+ PRIMERGY-Software	Manageability Software			

The following rules apply for the indication:

- When opening a configuration view, initially all components will be indicated individually (open), as in the most cases a lot of information has to be put in within this tab.
- Options and accessories, however, are indicated closed initially when opening the configuration view.
- Changing the indication within the configuration will be saved until the end of the configuration process.
- With summarized indication of build-in components, the non visible coloured backgrounds for the field „Count“ will be transferred to the leading plus sign (see example above). Only red and yellow fields will be displayed – a grey plus sign (for closed components) will not be displayed due to the bad recognizability. If yellow and red count fields should exist within a category, a red plus sign will be displayed in the summarized indication.

Integration of CentricStor Virtual Tape Appliance

Due to the variety of the new functions and component-specific characteristics, these will be described completely later in the help file. Detailed product knowledge is necessary for the configuration and the sizing of CentricStor solutions!



The example shows a VTA 4000. With one order number 4 racks with different Centric Stor processors, Tape-Volume, FC- and Lan-Switches, as well as various console components are summarized here. In order to get a complete and customer orientated configuration, additional components are required, which must be configured into the components by the user.

All new functions and properties are shown in detail in the Virtual Classroom Session offered on the first side.

Additional information concerning CentricStor solution and logistic hints:

Product info :

<http://extranet.fujitsu-siemens.com/storage>

Logistic and tool info:

<http://configurator.fujitsu-siemens.com/public/information>

http://extranet.fujitsu-siemens.com/vil/pc/vil/storagesolutions/inform/inform2006/inf_centricstor_v31c_de.doc

