

## New Version 6.6 of the PC-Architect and SystemArchitect

Planned Release: September 9th, 2005

Category: PC-Architect/SystemArchitect

Content: Tool Changes

### Overview of the new functions / helpful user information

- I **Operation with multiple databases and support of multilingual exports**  
Simple handling of heterogeneous customer landscapes
- I **Change to “Check for Update”**  
Better transparency in updates
- I **New functions in the “About” box**  
Better user support in the event of problems
- I **Change in handling of the country code**  
Clear and consistent approach for users
- I **Display of expansion options for systems**  
Improved user information
- I **Many minor changes**  
To enable simpler use, greater clarity and more information

## Operation with multiple databases and support of multilingual exports

### Introduction

The previous concept for the interface language of the PC-Architect and SystemArchitect, the export language (EXCEL, WORD or report) and access to the database was based on a single-language approach, i.e. when the system was installed, users had to choose a language version (German or English) for the tool and so also define the language to be used for exports. By means of the entry in the “Configure check for update” program, users specified a single update server that ensured that one database was kept up-to-date.

### Requirement

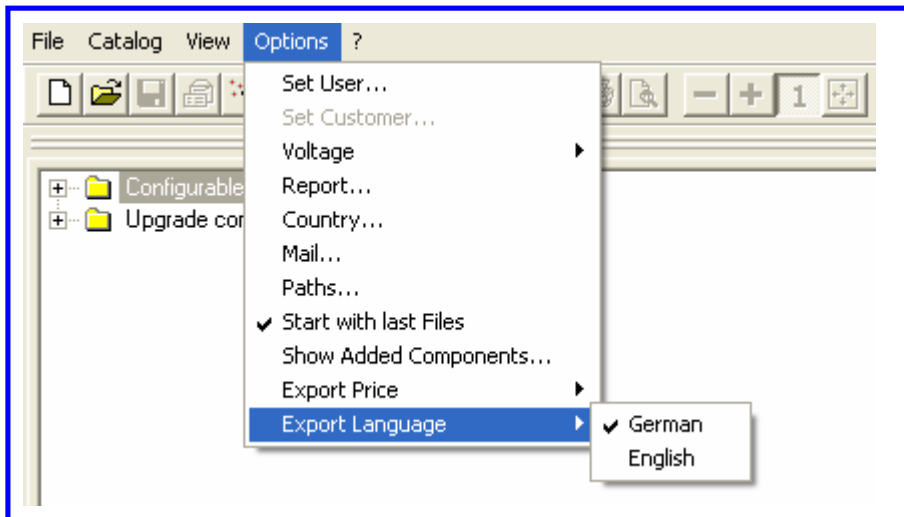
However, because of their working environment, certain groups of users needed to be able to

- Execute exports in German and/or English
- Work with several different databases

There is no means of changing the interface language at runtime or subsequently, i.e. users still choose one language (German or English) by selecting the relevant SETUP program.

### Multilingual exports

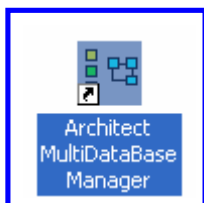
The export language can be changed by means of a new function in the “Options” menu. It has a direct effect on all subsequent exports. The last setting is saved and is activated again when the Architect is next started.



### Working with multiple databases

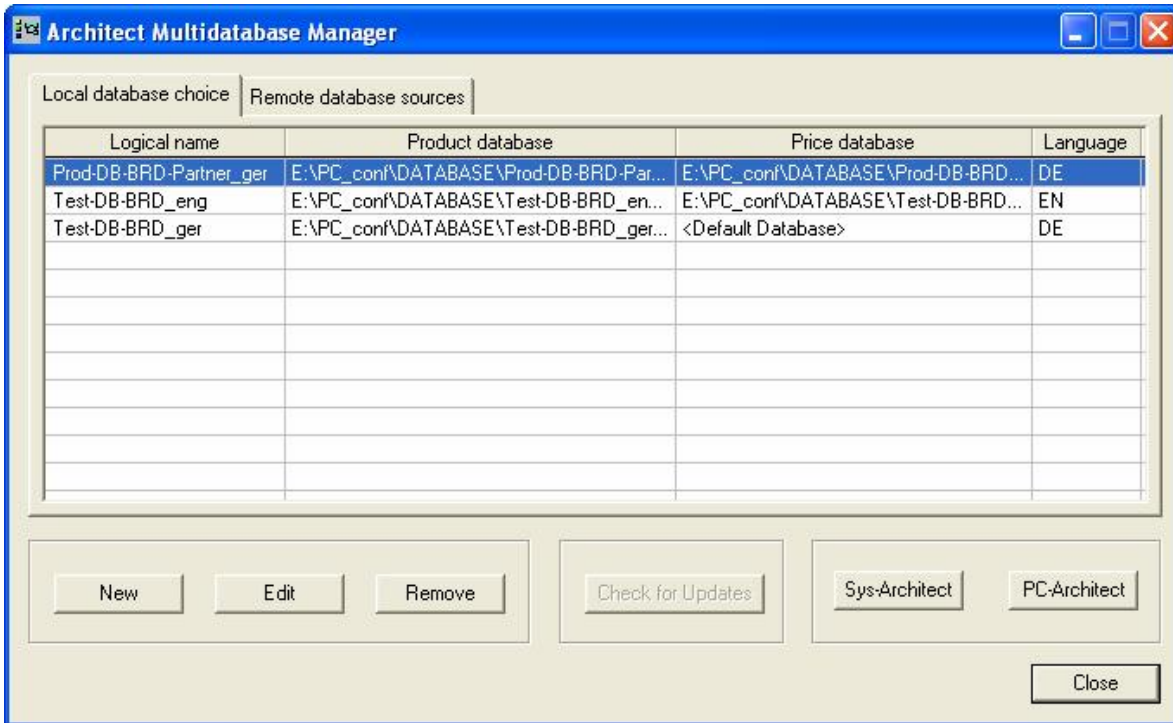
So that users wishing to work with several different databases are provided with optimum support, a new “start program” has been implemented specifically for them, since switching over the database at the program’s runtime is not possible! All the other users (i.e. the majority) still work as usual, i.e. they start the PC-Architect and SystemArchitect using the familiar icons and ensure that their database is up-to-date using the “Check for Update” function.

The new start program is called “Architect MultiDataBase Manager” (AMM) and is shown as a new icon in the program group “Fujitsu Siemens Configurators”.




After launching the AMM, users have two different options, each of which is represented by tabs:

- Access to different databases, all of which however must already be available locally (or as a network drive within a LAN) on the user's system. Users themselves are responsible for updating these databases.
- As above, with the addition that updating of the databases can be initiated directly by the user. However, the link to the update server (<http://...>) must be entered to enable this.



### Configuration of additional access to a local database

- The product and price database must already exist on the local system
- Select the tab “Local database choice”
- Press the button “New”
- Complete the necessary fields
  - An appropriate name should be selected; it must be assigned once only
  - The browser button to the right of the fields can be used as a means of simplifying entry of the paths for the product and price databases
  - Selection of the export language to be used initially for this entry. The value “Default” means that the export language is that last set in the program (PCA or SA)



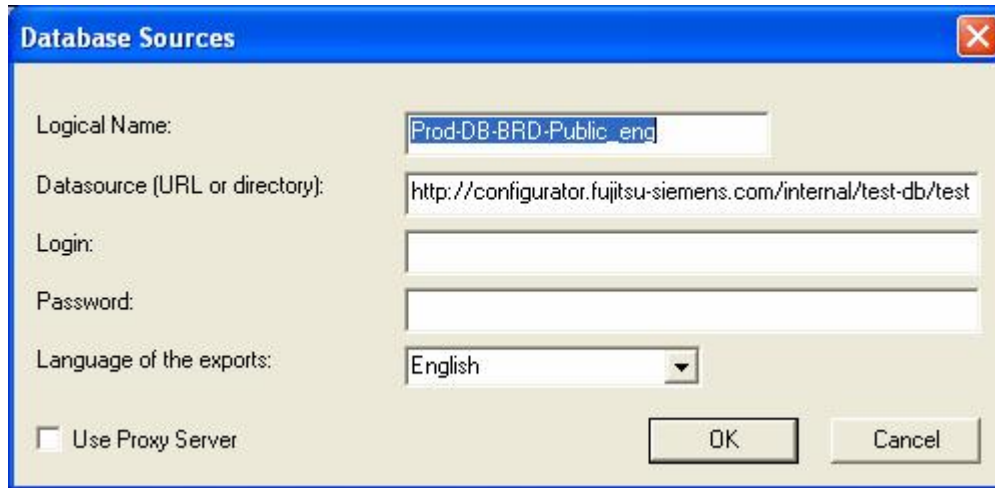
The screenshot shows a dialog box titled "Database information". It has a blue title bar with a close button (X) on the right. The dialog contains the following fields:

- Logical name:** A text box containing "Prod-DB-BRD-Partner\_ger".
- Product database:** A text box containing "E:\PC\_conf\DATABASE\Prod-DB-BRD-Partner\_ger\Sys\_arc.md" and a browse button (...).
- Price database:** A text box containing "E:\PC\_conf\DATABASE\Prod-DB-BRD-Partner\_ger\prices.mdb" and a browse button (...).
- Language of the exports:** A dropdown menu with "German" selected.

At the bottom right of the dialog are "OK" and "Cancel" buttons.

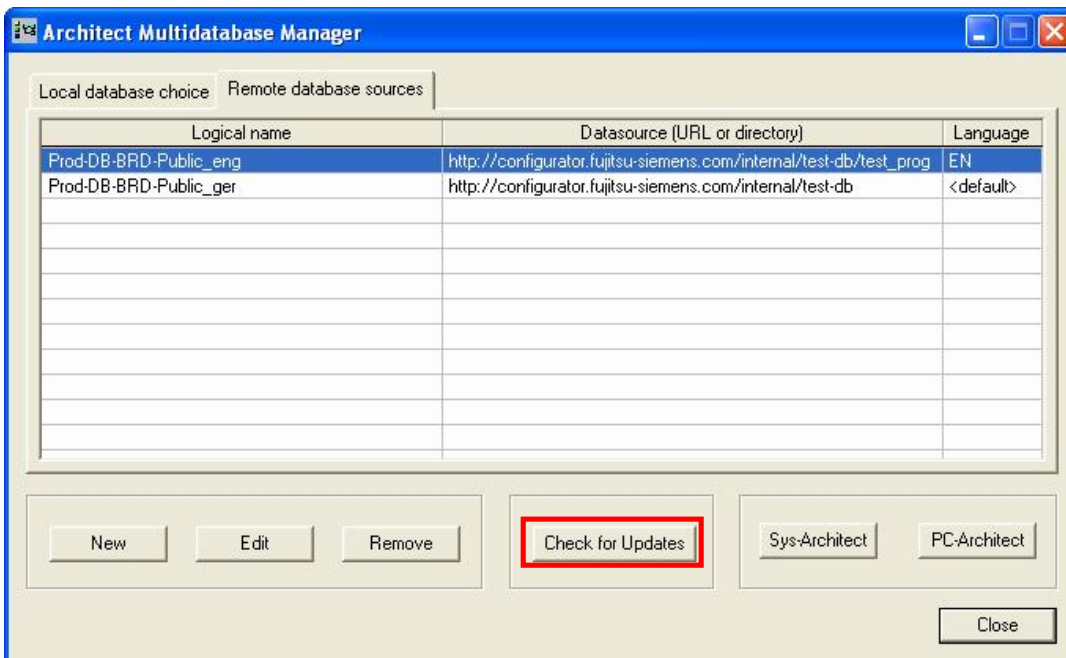
### Configuration of additional access to a remote database

- Select the tab “Remote database sources”
- Press the button “New”
- Complete the necessary fields
  - An appropriate name should be selected; it must be assigned once only
  - The paths for the source; here it is implicitly assumed that the product and price databases are always updated together in the update process. That is why there are no different fields for the two databases here.
  - Entry of the user name and password so that any access protection mechanisms are parameterized (similar to the procedure for “Configure check for update”)
  - Selection of the export language to be used initially for this entry. The value “Default” means that the export language is that last set in the program (PCA or SA)



**Calling updates for remote databases**

The existing function “Check for Update” has been changed due to the fact that multiple databases can exist. In addition, the same function can be started directly from the “Remote database sources” tab by means of the button “Check for Updates”. A detailed description is provided in the next section.

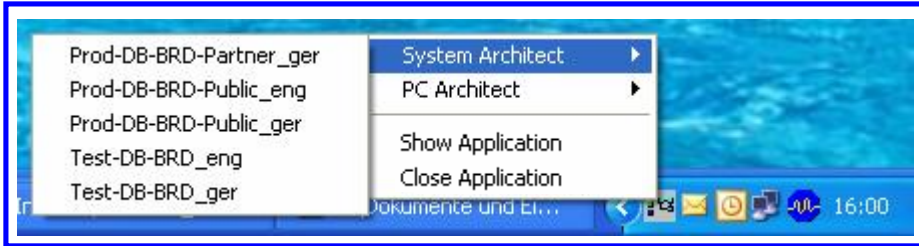


**Starting the PCA or SA with a specific database**

- Select the tab “Remote database sources” or “Local database choice”
- Select the entry for the database you wish to select
- Select the program to be started by pressing the button “Sys-Architect” or “PC-Architect”
- After the SA or PCA is started, the export language is set in these programs as follows:
  - § If <default> is set in the “Language” column, the export language last used in the programs is set
  - § In all other cases, the export language set in the “Language” column is used.

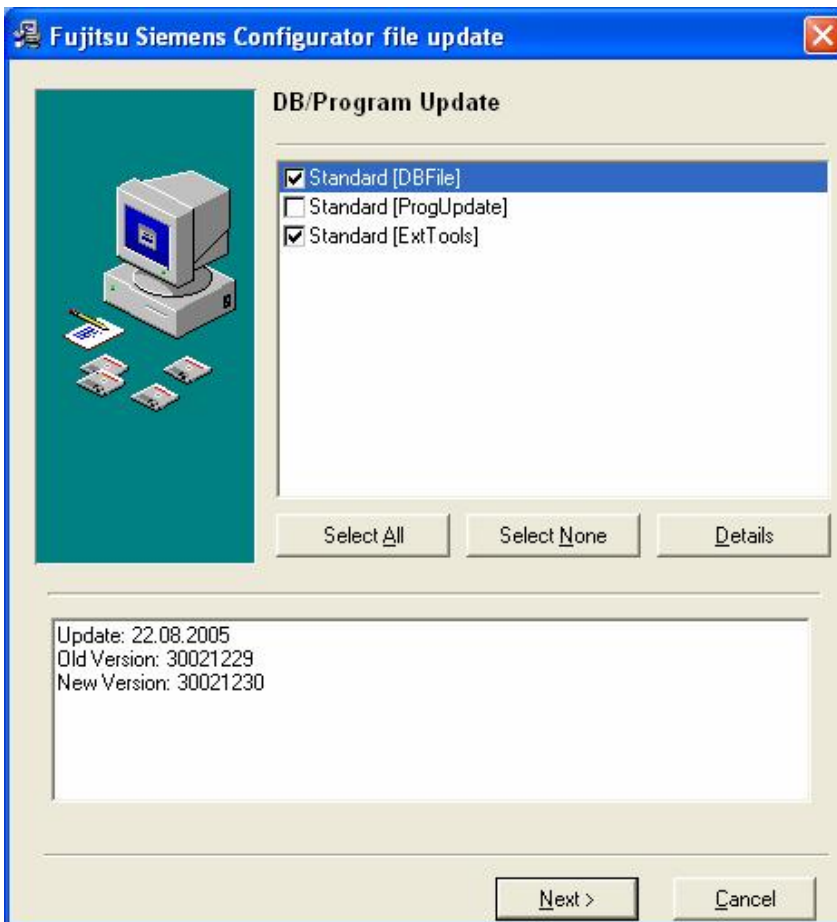
## AMM in the task bar

The AMM application is shown as an icon in the information area (right-hand part of the task bar) of Windows using the standard WINDOWS function “Minimize”. By right clicking on the icon you can start the PC-Architect or SystemArchitect directly, specifying the database entry to be used. The program’s user interface can also be opened or exited completely here.



## Change to “Check for Update”

The interface for the “Check for Update” function also had to be modified as a result of the new functions described in the previous section. After the function has been called as usual from the program group “Fujitsu Siemens Configurators”, the following screen appears:

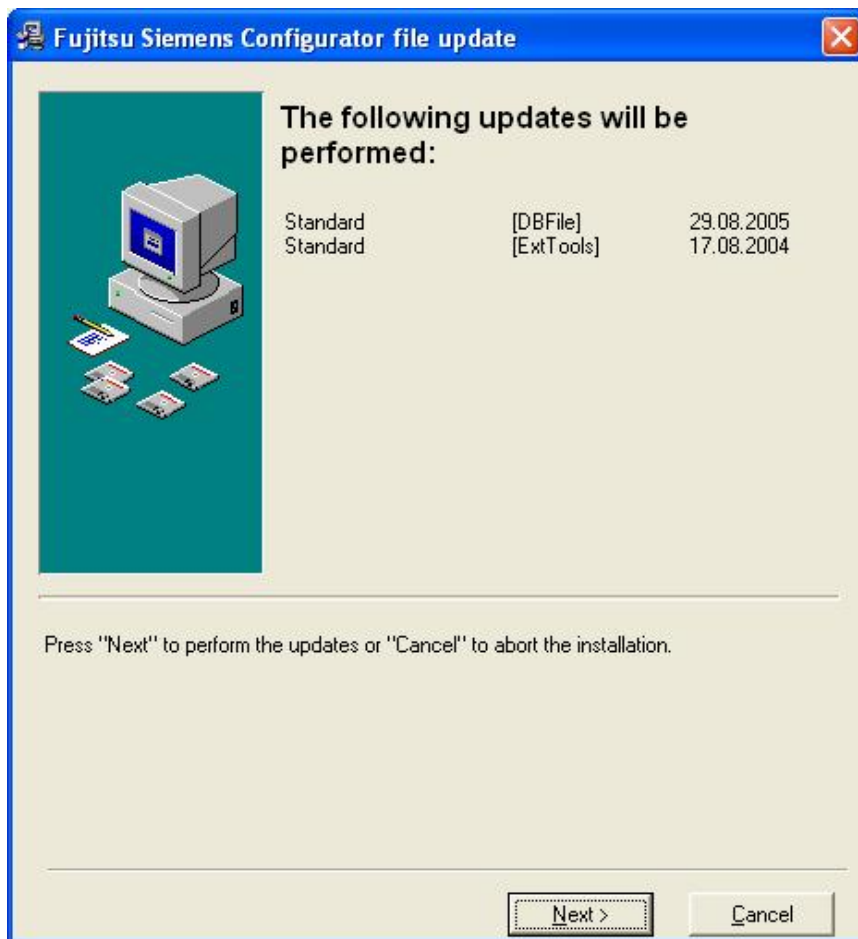


All the available update areas for the standard update are shown in the upper area. A check mark before an entry means that a more recent version for this area is available on the update server. Brief information on the contents of the update for the selected area can be found in the bottom part of the display.

By pressing the “Details” button, you can obtain more detailed information on the new update for the area in question. This is displayed in a separate window. In addition, you can change the choice of areas by specifically setting or removing check marks. The buttons “Select All” and “Select None” also change the areas selected. This makes it possible to perform a “mandatory update”. The update is resumed by means of the “Next” button.

If – and only if – further (optional) additional “remote databases” have been defined by means of the AMM on the system in question, there is an analogous query of the databases defined there on the next page.

The last page shows a summary of the selected areas for which the update is to be performed. You start the update by pressing “Next”.

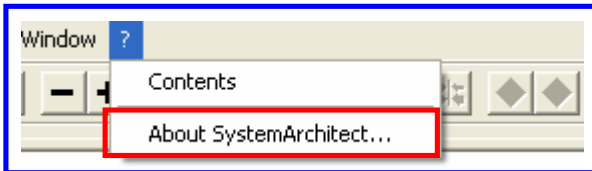


The function “Check for Update” can also be started from the “Remote database sources” tab of the AMM.

- If no entry has been selected, all the existing entries are checked
- If one entry is selected, only it is checked

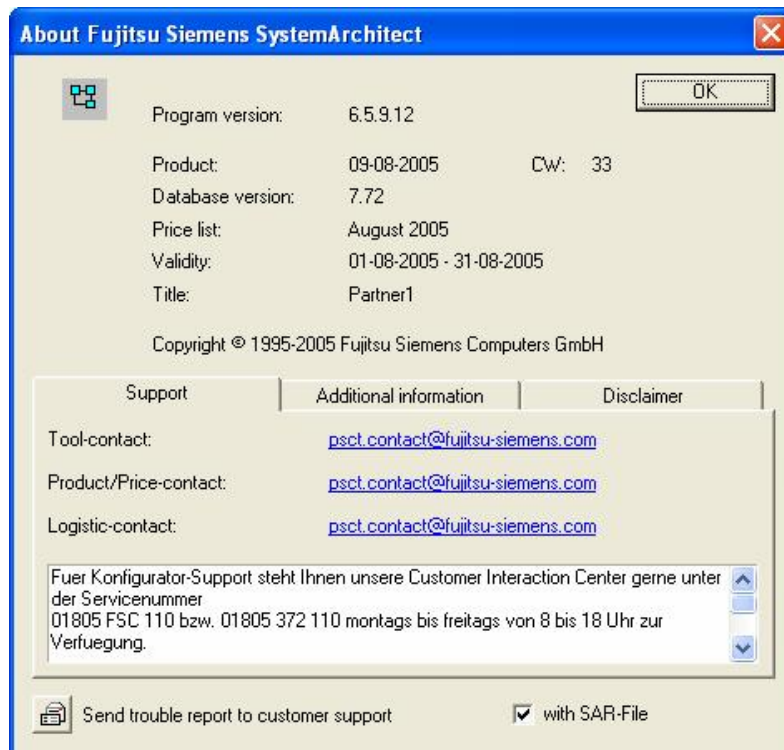
## New functions in the “About” box

The contents of the “About” box, which is called using the function “About SystemArchitect...”, have been redesigned.



The previous information on the program and database version has been restructured and the “Title” has been added to it. In addition, 3 new tabs are displayed:

- Support**  
 Country-specific mail addresses are displayed and can be used for sending various support queries. When you select one of the displayed addresses, the installed default mail program is started and the selected address is entered by default. You can then formulate your query in the text box. If you call the function “Send trouble report to customer support”, various systems files related to the PC-Architect and SystemArchitect are also automatically read out and added to the new mail job as an attachment. If the “with SAR-File” function is enabled, the current configuration is also added as an attachment. If this configuration has not yet been saved at this time, you are first asked if you wish to save it. This type of query is intended primarily for technical problems connected to installation and functioning of the PC-Architect and SystemArchitect and not for clarifying questions related to the contents of configurations!
- Additional information**  
 Various Web links to further information on the PC-Architect and SystemArchitect are offered here. When you select a link, the installed default Web browser is started.
- Disclaimer**  
 This contains licensing texts that have to be displayed due to the fact that external program parts are used.



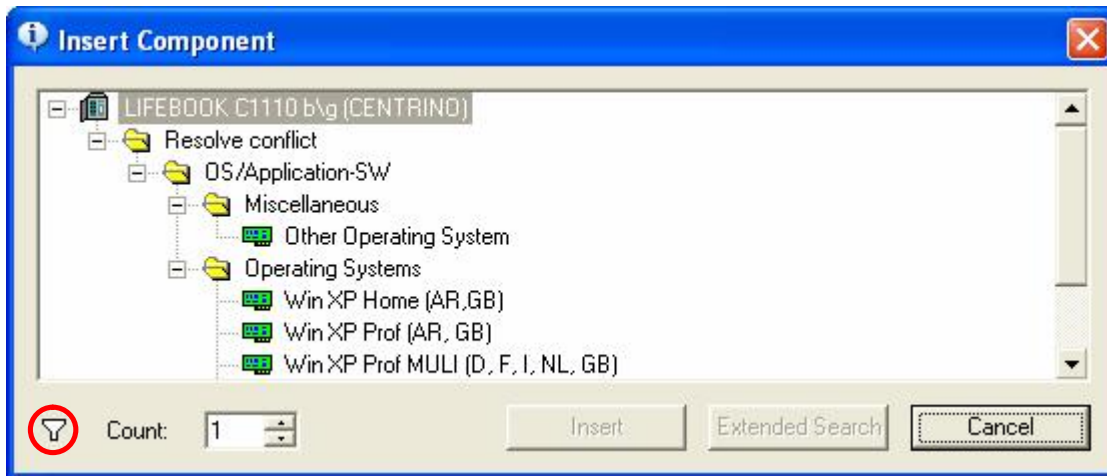
## Change in handling of the country code

In future, the country code used for filtering components will be set only centrally, under “Options”. The previous inheritance mechanism, in which the country code was passed on to all the systems and could be changed subsequently, has been dropped. The country code set always affects all the components in the current view

- System selection tree
- Configuration view
- Rack view
- Connection view
- Add-on products
- Substitute and successors
- Resolving conflicts

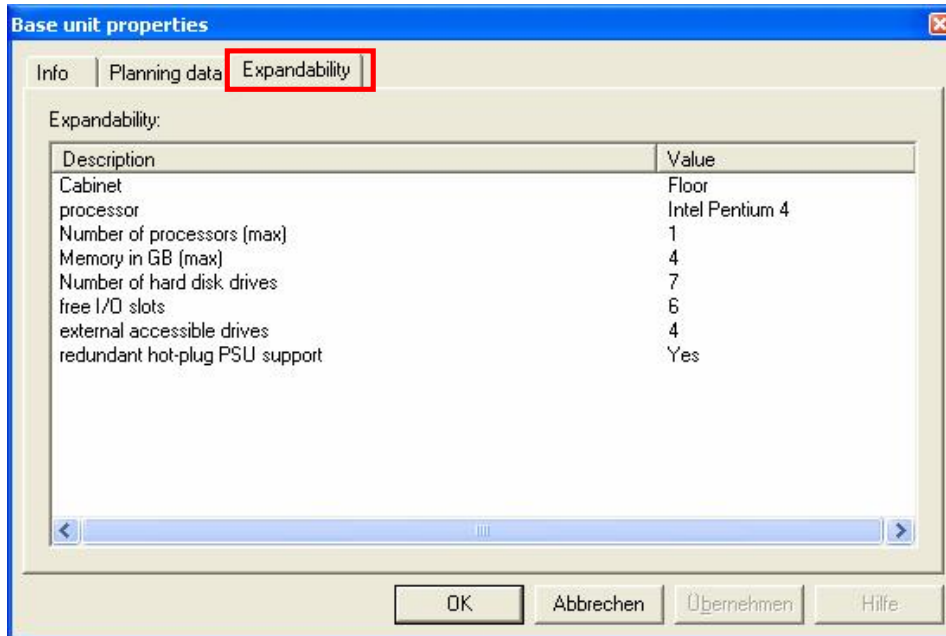
In addition, the filter affects all the assistants (System Selection Assistant, Power Assistant, etc.).

A funnel icon appears in the footer of the PC-Architect and SystemArchitect and in the relevant dialog boxes as soon as a country filter has been set. You obtain information on what filter has been set in the form of a tool tip when you move the mouse over the icon.



## Display of expansion options for systems

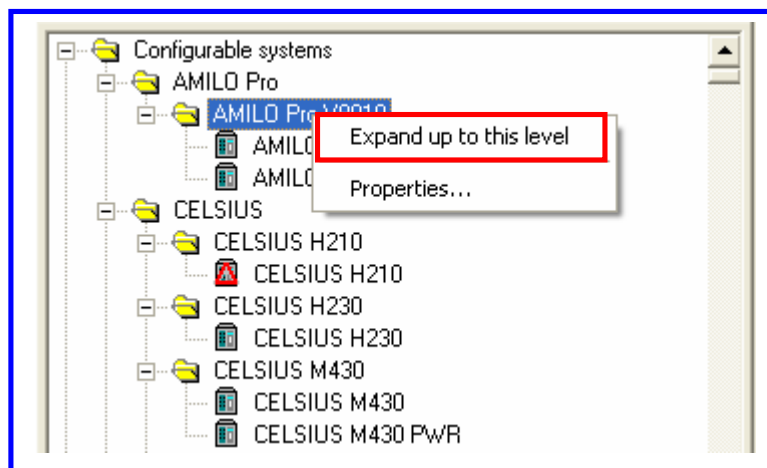
A new tab called “Expandability” has been implemented in the properties dialog of base units and supplies details on the expansion options for the system in question. The data also required for finding a system using the System Selection Assistant is primarily displayed. However, additional data may also be shown.



## Many minor changes

### Expanding and collapsing hierarchy levels in tree views

The existing functionality whereby a tree view can be fully expanded if you keep the CTRL key pressed and click with the mouse has been enhanced. Every element in a tree view (system selection, configuration overview, connection view, partitioning view, etc.) has been given a new context function called “Expand up to this level”. The view of all the other tree elements is also influenced by this, even if they have not been selected, but are located at the same hierarchy level.



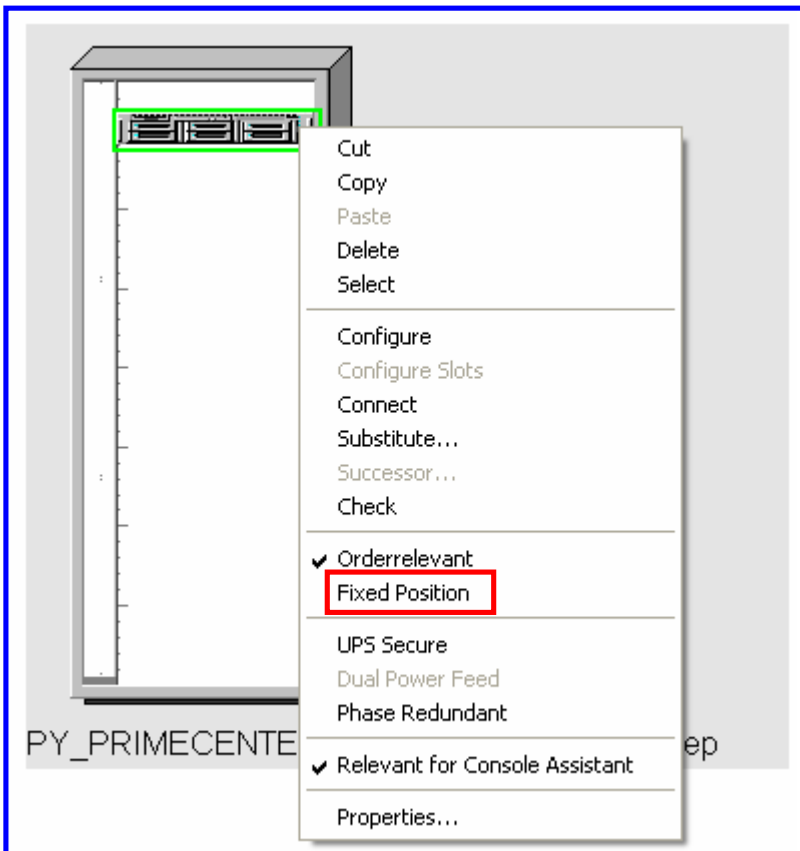
In the above example, all the trees up to the model series are closed and the individual systems are no longer displayed after the function is executed.

## Fixing the position of rack modules

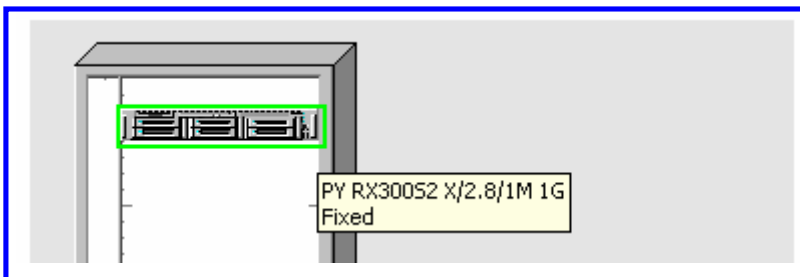
In many cases, it may be desirable to specify that a rack module should not change its installation location under any circumstances. The following functions normally permit this:

- Manual move
- “New Sort” function
- Displacement by rack modules that have been deliberately incorporated at the top or bottom of the existing module.

The new context menu function “Fixed Position”, which is available for every rack module located within a rack, prevents the module in question from being moved.



You can see whether a rack module has been fixed in position by means of an addition to the tool tip. This is always displayed when you move the mouse cursor over the module.



### **New category “Hints”**

The results window of the check function can now not only display the existing entries in the category “Conflicts” and “Warnings”, but also those in the new category “Hints”. The entries shown there can be handled in exactly the same way as those for the other categories (context function, functional range, etc.).

### **Change in the mechanical planning data in the exports**

The heat dissipation of rack components is output in the exports “Report” and EXCEL not only in the existing units [W] and [BTU/h], but now also in kilojoules an hour [kJ/h].

### **New conflicts and hints in the case of mechanical overloading of racks**

A message is output in the check function in the following situations:

- When the maximum permissible total weight of a rack is exceeded, as a conflict aimed at avoiding mechanical destruction.
- When the maximum permissible transport weight of a rack is exceeded, as a hint to the haulage company, and the resultant fact that certain points must be taken into account during transportation.
- If a heat dissipation threshold defined for the rack is exceeded. In this case, a hint is issued to the effect that you should consider using a rack with active cooling (LC rack).

### **Better representation of non order-relevant rack components**

Appropriate text additions in the exports point out that the component in question is non order-relevant.

### **Change in the description for discontinued systems**

The display “Phased out” will appear in future instead of “Expired”.

For advanced information and training:

## Training Offer

**Training programs are offered on the topic of 'Configuration Tools' and can be adapted to meet the needs of the individual participant group.**

**Course objectives:** To provide a functional and performance overview  
 To create simple and complex configurations  
 To provide practical experience of tool handling through exercises

**Target group:** Technical consultants, sales employees (with or without previous knowledge of the tool) with the relevant product know-how

**Language:** German or English

**Duration:** 3 hours to 2 days (depending on individual needs)

**Possible topics:** Configuration of individual systems  
 Assembly of racks and rack modules  
 Partitioning for PRIMEPOWER systems  
 External cabling and power assistant  
 Plausibility checking  
 Creation and use of configuration templates  
 Import and export functions

**Contact:** [christian.buechner@fujitsu-siemens.com](mailto:christian.buechner@fujitsu-siemens.com)

<p><b>Published by:</b></p> <p>Metin Yazici                  FSC IS PLES</p> <p>Phone: ++49 5251 8 20076  <a href="mailto:metin.yazici@fujitsu-siemens.com">metin.yazici@fujitsu-siemens.com</a>  <a href="http://www.fujitsu-siemens.de/">http://www.fujitsu-siemens.de/</a></p>	<p>Delivery subject to availability, specifications subject to change without notice, corrections of errors and omissions excepted.</p> <p>All conditions quoted are recommended cost prices in EURO excl. VAT (unless stated otherwise in the text).                  All hardware and software names used are brand names and/or trademarks of their respective holders.</p> <p>Copyright © Fujitsu Siemens Computers, 03/2005</p>	<p><b>Extranet:</b>  <a href="http://extranet.fujitsu-siemens.com/">http://extranet.fujitsu-siemens.com/</a></p>	<p><b>Distribution:</b>                  Internal: X                  External: X</p>
---	--	--	---