

New Version 6.5 PC and System Architect Planned Release: 15th April 2005

Category: PC- /System Architect

Content: Tool Change

Overview of the new functions / Useful for the user

- Enhanced transfer of PCA-configurations into the SA
simplified further use of PCA-configurations; unique handling
- Changed rules for the function Replace
No restrictions when replacing; unique handling
- Upgrade components for Storage- and PRIMEPOWER products
simple supplement order for all products
- Assistant for console cabling
faster, error free configuration
- New properties with power components
better assistance and information within power cabling
- Enhanced Adding of Adapters
No incorrect configurations
- New Options
enhanced adjustment to different requirements for user
- Adjustments within EXCEL-Export
better information content;
- Several small changes
better operation, better overview

Enhanced Transfer of PCA-Configurations to the SA

- In the past, object model within PCA and SA, only floor-stand-systems could be configured in the PCA. Even if it was physically a rack server, which was configured with the PCA, it was set as 'Floor-stand-Systems'.
- This led to problems when replacing (see next paragraph) and inserting the configuration into the SA. The graphic object of an obvious rack server could not be brought into a rack – the missing support by the substitute function made a complete new configuration of the system necessary.
- With this change, the systems configured in the PCA are entered now correctly as floor-stand – or rack-systems. This leads now to a possible variant inquiry in the PCA, which was only possible in the SA before. Thus all systems configured in the PCA are processed correctly in the SA.

Changed Rules for the Function *Substitute*

- In consequence of the enhancements described before also the *Substitute-Function* had to be adapted. Now it is valid always and independently from the program.
 - A single floor-stand server that 'lies on the floor' in the SA or was configured in the PCA can be replaced by both the floor-stand server and the rack server in both programs.
 - This is also valid for single rack servers.
 - In the SA a slide-in rack server can only be replaced by a rack server.
- The offer of the replacement systems is still limited in the same model row, as there is an assumption guarantee only for these systems.
- A model-row predominant substitute function is only possible in exceptional cases, that must be released separately in the database (e.g. PW 250N and PW450N).
- The display of the hierarchy levels (model rows) was also enhanced.

Upgrade components for Storage- and PRIMEPOWER products

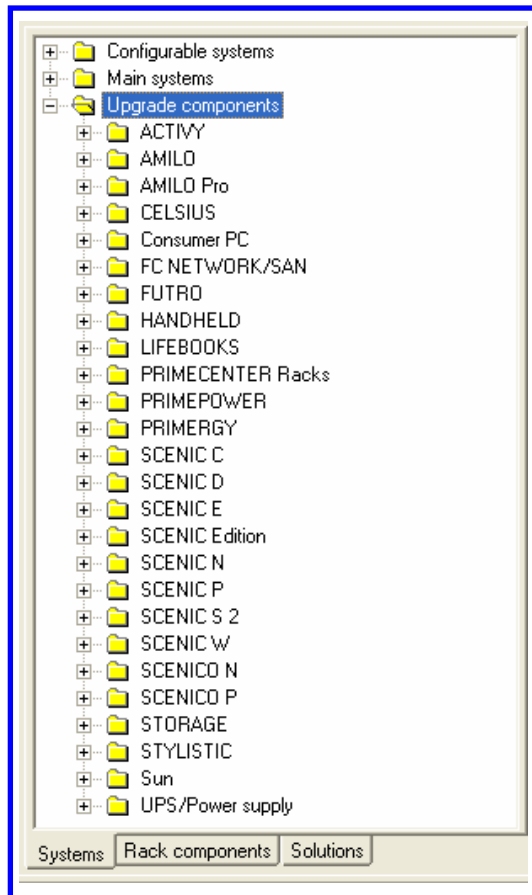
Introduction

- The supply of upgrade components, introduced with version 6.2, was first limited to the product areas 'Notebook', 'PC' and 'PRIMERGY', as there are individual part numbers for these areas.
- For the products STORAGE and PRIMEPOWER there is not such a distinction by the part number. Furthermore it is possible in this product area to configure multi-level hierarchy levels (system – system-board - component), that do not exist in these areas.
- With new version these product specific differences are considered accordingly – partially a changed handling is necessary.

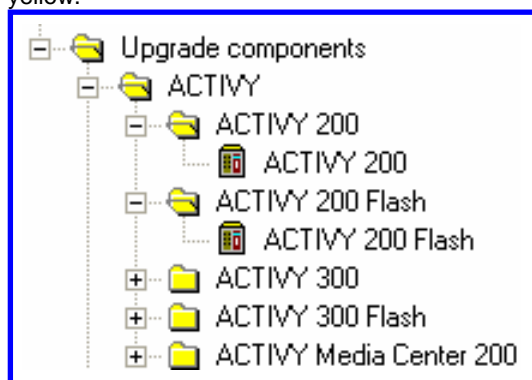
Upgrade components for Storage- and PRIMEPOWER products

Selection of the basic carrier

- The start in the PCA and SA for all upgrade components takes place via the 3. folder in the first level of the system selection tree. The sequence of all entries (family, model, system) is alphabetically sorted.

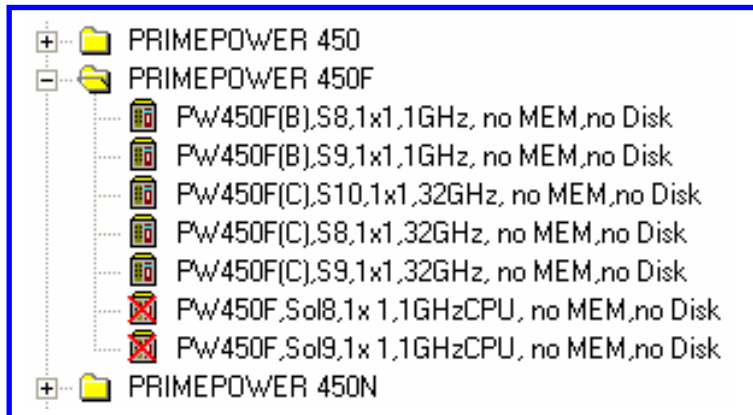


- As long as there is at least one orderable option for a system (or model), an appropriate artificial / symbolic carrier is displayed, which makes a purposeful component selection possible for the user. Different icons symbolize the design of the system (floor-stand, rack built-in component, rack).
- For the product areas, in which options are provided with individual order numbers, only one symbolic carrier is displayed for every model, which represents all orderable systems. All available options for these systems are summarized in this carrier. For a better distinction to effectively existing systems these carriers are marked yellow.



Upgrade components for Storage- and PRIMEPOWER products

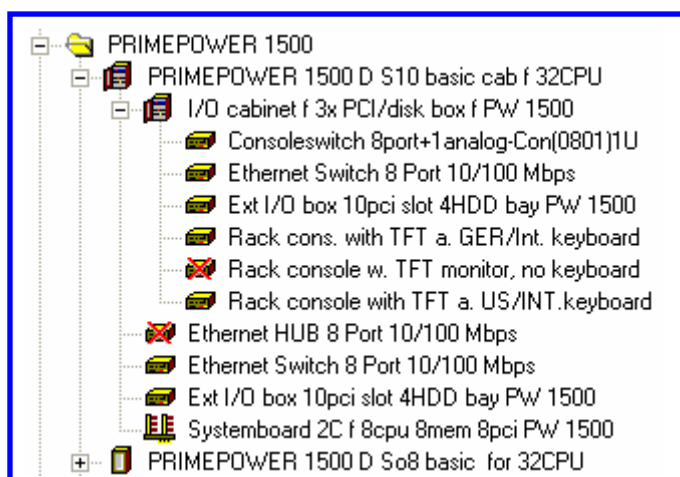
- For the new added product areas STORAGE and PRIMEPOWER, in which options are not provided with individual order numbers, one symbolic carrier (as system) is displayed. All available options for these systems are summarized in this carrier. For a better distinction to effectively existing systems these carriers are also marked yellow. In addition the user can find following icons:
 - Without any marking means, that the system is also orderable 'normally'
 - A red triangle means, that the system has already been shipped abroad (on stock delivery)
 - A red cross means, that the system is not orderable anymore.



- The carrier selection can be done in the PCA and SA by double-click or drag and drop.
- **Important rules:**
 - All these carriers serve only for the controlled allocation of entering options!
 - They are always 'not order-relevant' and thus **never a component of a configuration**
 - That applies also to systems, which are still orderable – these must be ordered in the first file *configurable systems*.
 - **A checking of all subsequent delivery components** (amount, toleration, relation to other components, ...) **does not take place!**

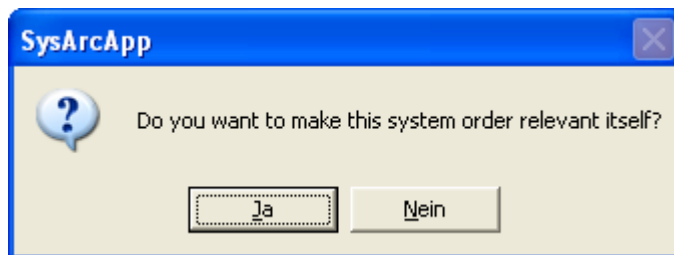
Selection of sub-carriers

- For some components of the 'new product areas', there are again configurable components, which could not be ordered isolated so far. These can be expandable cabs, PCI-boxes, and other rack built-in components. For the display of these assigned subcomponents an appropriate structure was realized in the upgrade components tree.



Upgrade components for Storage- and PRIMEPOWER products

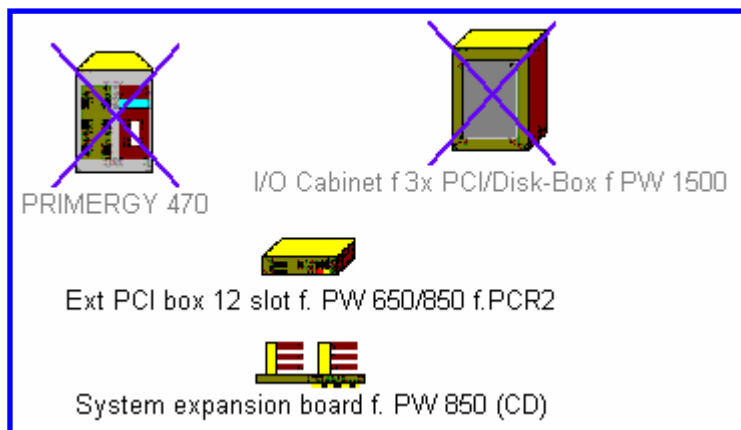
- In the shown example following subcomponents are displayed below the basic cab.
 - I/O-expandable cab, inclusive all subcomponents
 - Rack built-in components, as hub, switch and I/O-Box
 - Configurable components
- Following properties apply to each of these components:
 - The type of component is displayed by the corresponding icons
 - The real availability of the components is displayed by red triangles and crosses
 - The selection is the same as the selection of the basic carrier, with the important difference, that there will be an inquiry for the available sub carriers, whether this carrier should be ordered.



- The once made statement to the order relevance cannot be changed afterwards – if necessary, the carrier has to be deleted and selected again.
- There is no checking regarding the configurable components (options)

Indication of the carriers (SA)

- For a better distinction of 'normal' systems and components supplement delivery carriers are indicated with new symbols on the surface of the SA. The characteristic 'Carrier is not order relevant' will be displayed by the crossed symbol.



Selection of upgrade components

- Like before, the configuration view will be opened by double click on the carrier symbol. Only the tab 'Options' will be available for the component selection. The remaining handling here is 100% similar to the configuration of options in 'normal' systems.

Assistant for console cabling

Introduction / General Information

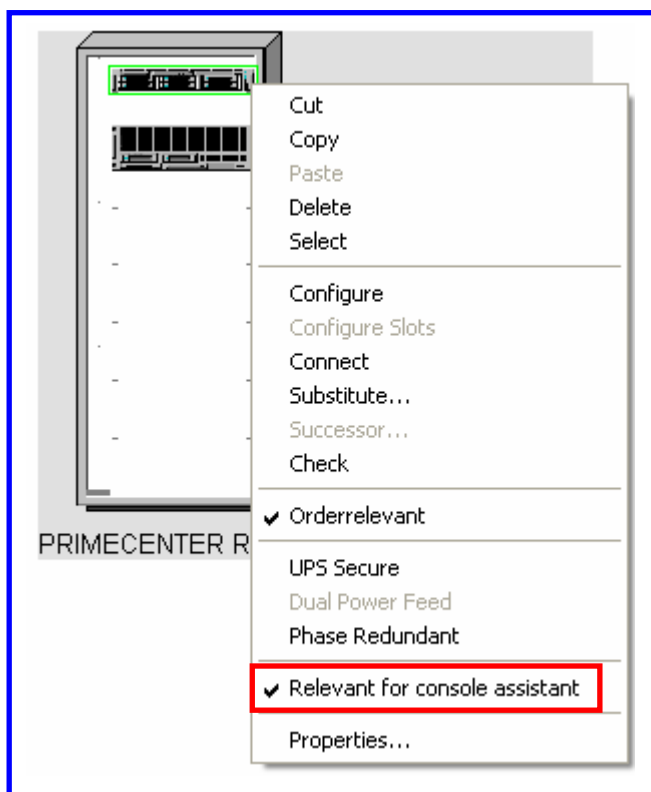
- After successful introduction of the power cabling assistant a further assistant for the console cabling was introduced. The following basic rules are valid:
 - Affects only racks
 - Several racks cannot be processed at the same time
 - No support for rack overlapping console cabling
 - Only first cabling is supported in the first level – an incremental cabling will be implemented in further version
 - The sequence of cabling, cascading and allocation of the switches are made according the same rules as described in the manufacturing instructions of the factories
 - Rack built-in components and complete racks can be excluded from cabling by the assistant
 - Definition of roles for further view:
 - KVM-suppliers are components which deliver necessary console resources_ (keyboard, mouse and monitor)
 - KVM-consumers are components which need console resources (server, etc...)
 - Consol cable, consol adapter and consol switches connect the supplier with the consumer
 - Due to the many different console switches, they must be available in the racks sufficient number **before** starting the assistant
 - The assistant adds all necessary console cables and console adapters
 - In the **selected** racks **all** existing console cables and console adapters are deleted when starting the assistant in order to enable the connection to another possible console switch.
 - However 'internal clearing' takes place with the added components which are listed in the final report.
 - The cascading of switches is made by the assistant regarding the described rules, as well as the definition of the 'master switch'
 - The master switch roll is depend on the installation situation (vertical slot "below to the left") and the capability of rules of switch.
 - At the moment the only supported console supplier is the rack console RC22
 - For every rack, an individually exact statement is done in the final report regarding errors, warnings and cabling.
- Before starting the Assistant every selected rack will be checked. This will probably avoid the start of the cabling assistant. The user has to check following points:
 - No consumer found
 - No switch could be found as there are more than one consumer
 - Not enough available switch ports for the number of consumers
 - More than one switch, but no MASTER
 - Existing, but not order-relevant console switches, console cables and/or –adapters, due to an incremental cabling that is not supported in this version.
 - More than one RC-22 found in the rack

Assistant for console cabling

- The following circumstances are tolerated by the assistant – possibly they would lead to warnings in the final report:
 - Non order-relevant KVM-Consumers are connected as usual
 - Non order –relevant KVM-Suppliers are connected as usual
 - Missing VGA-Controllers in the PRIMEPOWER systems are marked in the final report by open connectors of adapters / cables
 - A missing KVM-supplier is mentioned in the final report
 - There are too many switches available

Preparation by the user

- Add all racks and servers necessary for the configuration
- Configuration of the Server
- Possible data cabling (SCSI- and/or FC-cable)
- Activate/Deactivate single consumers, which should be connected with the console assistant. Following indications have to be observed:
 - The Activation / Deactivation for all consumers within a rack can be done – analogue to the power attributes – centrally by the context menu of rack.
 - The function is activated initially for every rack. Every new added server within a rack 'inherits' the selected attribute.

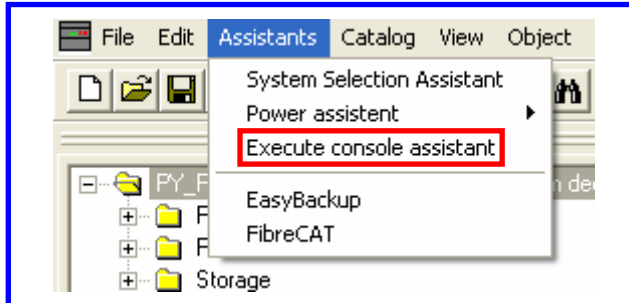


- The user adds the required amount of console switches. The user has to check the number of console consumers as well as the number of available ports on the console switches. When cascading, every cascade can only be provided with only one port.
- Optional adding of an RC22-console.
- Console switches and RC22 are always relevant for the console assistant! The attribute cannot be changed.

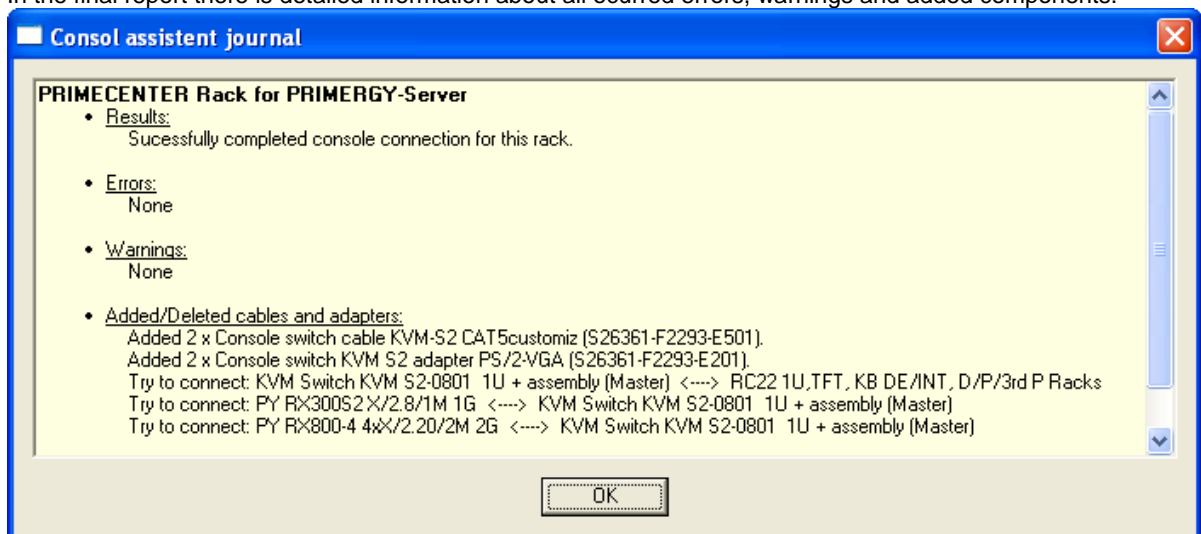
Assistant for Console Cabling

Starting the Assistant

- Marking of all racks, for which the console cabling should take place, just click on Assistant – Execute Console Assistant or click on new symbol.



- After that the following Steps are processed internally for each selected rack:
 - Test, whether the assistant can start (initial test as described above)
 - Disconnection of all existing connections
 - Definition of Master- and Slave-switch
 - Creation of switch-cascades
 - Consumer cabling
 - Final report
- In the final report there is detailed information about all occurred errors, warnings and added components.



- Manual console cabling has to be done, if the existing components are excluded from the standard operation.
- The **checking** regarding correct cabling takes place independently from the assistant because of the deposited resources and **has to be done manually** by the user.

New properties of power components

- In some cases, various error messages can appear regarding the overload of components within power cabling. Furthermore, the experienced user, who does power cabling manually, lacks in some information regarding power load of individual components.
- In the new Version, new characteristic windows will appear for these components.
- The following components have new properties:
 - Power connectors
 - Socket strips
 - UPS
- In the property dialog (opened via context function) the new tab *Electr. planning data* was created which show the following information:

The screenshot shows the 'Connector properties' dialog box with the 'Electr. planning data' tab selected. The 'Performance Data' section contains a table with the following data:

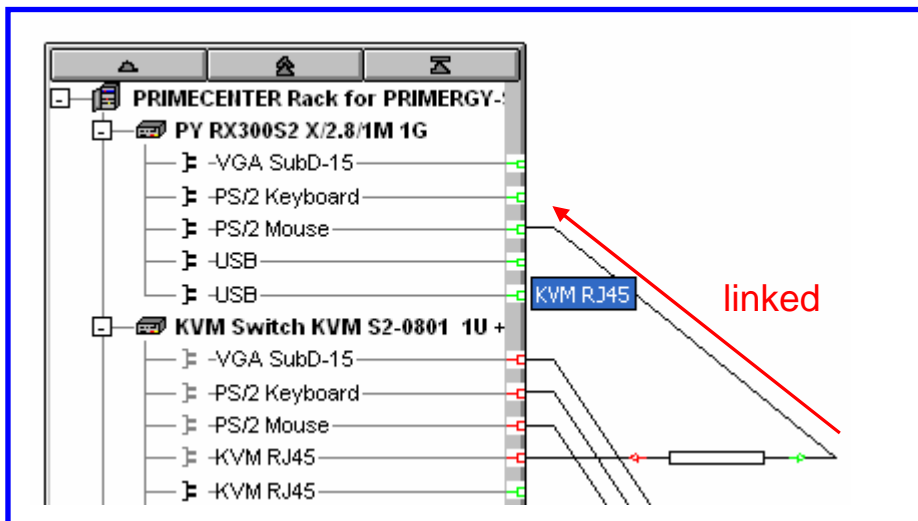
	Sum:	Phase L1:	Phase L2:	Phase L3:	
Cumulative apparent power:	689,00	0,00	689,00	0,00	VA
Cumulative real power:	681,00	0,00	681,00	0,00	W
Cumulative amperage:	3,00	0,00	3,00	0,00	A
Maximum apparent power:					VA
Maximum real power:					W
Maximum amperage:	10				A

At the bottom of the dialog, there are buttons for 'OK', 'Abbrechen', 'Übernehmen', and 'Hilfe'.

- 1 The current electric power of the selected connector or components
- 2 It shows which phase is effected. The fields are filled only, if a complete path is connected to a local power supply system.
- 3 The maximum load of the selected component in ampere; in case of a USV the fields of the maximum apparent power and the maximum real power are filled, too.

Enhanced Adding of Adapters

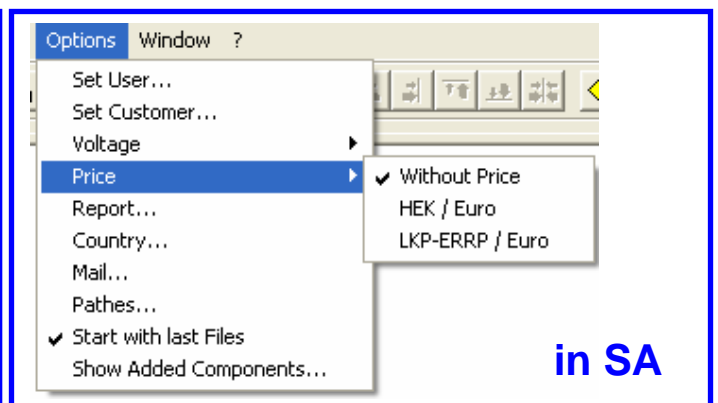
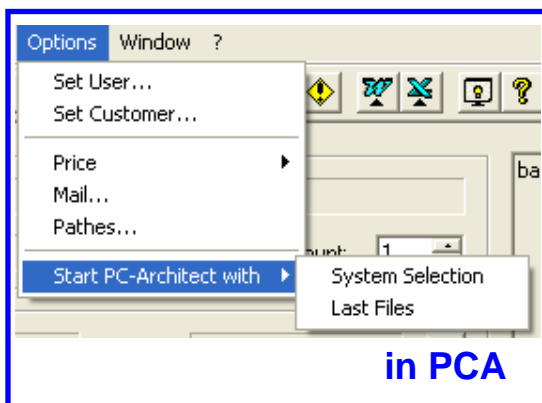
- In the cable view there are two possibilities to create a connection between two components:
 - Selection of both components and starting of the function *Connect*
 - Graphical connection of both components by drawing a line with the mouse (*Linking*)
- In the first case there is **always** access to the database in order to find possible cables / adapters.
- In the second case there is – because of performance reasons – only access to the database, if two sockets should have been connected. In all other cases it was assumed that the *Linking* should be uses for connecting two connectors which do not need access to the database.
- Error warnings appeared during manually console cabling, when an open end of an a console cable was linked to the socket of a server, as an additional adapter is needed.



- With the new version of the SA the database can be accessed directly after an unsuccessful attempt of a direct connection when linking.

New Options

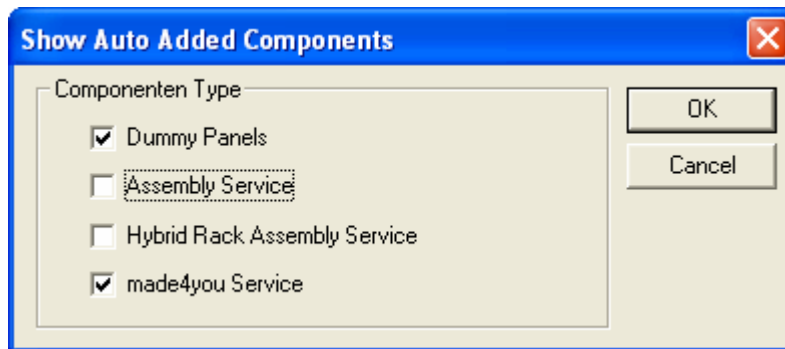
- With the new version some new options were implemented, which make the daily usage of the tools easier.



- Price - without Price
no prices will be displayed in the exports (Word, Excel and bill of materials)

New Options

- Start with last Files
With activated function the tools will be started with the last opened file. With deactivated function, the SA starts always with an empty configuration sheet, in the PCA the final properties are determined by the following new options.
- Start PC-Architect with system selection (only PCA)
With activated function the PCA starts with the system selection as usual. With deactivated function the PCA starts 'empty', i.e. an existing configuration file must be opened – or the function *File – New Configuration* must be selected.
- Show added components (only SA)
After selecting the option Show added components the user can activate / deactivate corresponding indications in a sub menu.



This function will be described below.

Adjustments within the EXCEL-Export

- The EXCEL-Export and the reports were enhanced by:
 - Output of planning data also for floor-stand-systems – up to this release this was only for racks
 - Text change within the operating system filters
 - Text changes regarding the electric load of UPS
 - Text changes within the mechanic planning data (weight and heat)

Several small Changes

- Highlighting the selected price model

The selected price models (found in options) that effect exclusively exports, leads to a bold headline in the price columns for the corresponding price model. So the selected price model can be easily found without opening the *Option dialogue*.

Selected price model: LKP

Price

	LKP-ERRP / ...	HEK / Euro
Price	590,00	590,00
Total	590,00	590,00

Processor XEON DP 3.2GHz 1MB/800MHz

Base unit

Product:

Product no.:

Filter

OS: Country:

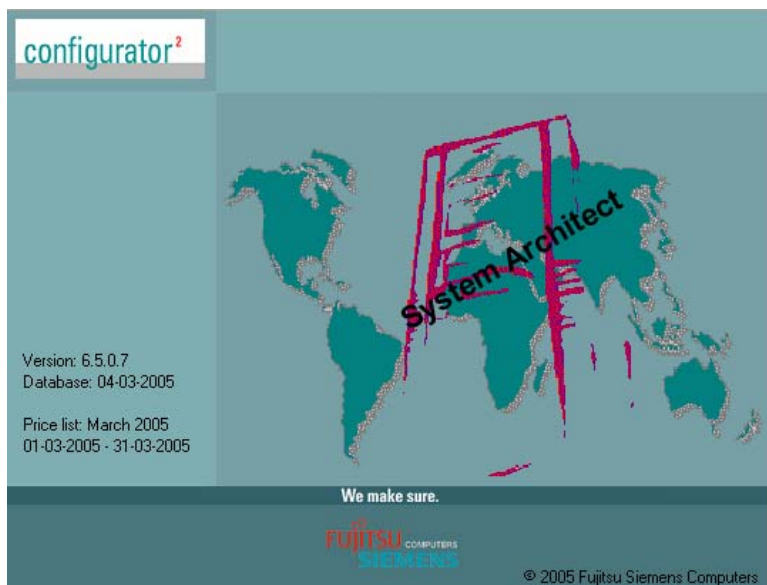
Component list
 Options
 Configuration

Hardware		Software		Service	
Product no.	Description	Count	Status	LKP-ERRP / ...	HEK / Euro
Processor					
S26361-F3086-E320	Processor XEON DP 3.2GHz 1M...	1	●	590,00	590,00
Memory					

Floorstand incl. 1 hot plug power supply module castors and sliding screen with lock, 4 hot plug redundant); dualsystemboard with 1x Xeon DP DDR RAM PC2-3200 ECC; floppy disk drive 3.5! PCI graphics, 2xGbit Ethernet LAN onboard, Fa controller (for 1xDVD + 1x RemoteView or 1x C burner) and 2-channel U320 SCSI controller (1M onboard); RAID5 I/O- processor onboard (RAID optional); BMC Servermanagemet Chip onboard

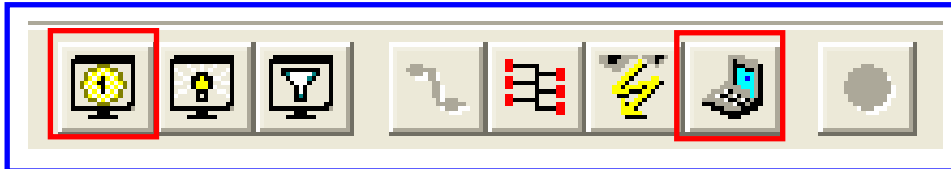
- Starting window in the background

The opened window opened after starting the PCA / SA can be now overlapped by other applications.



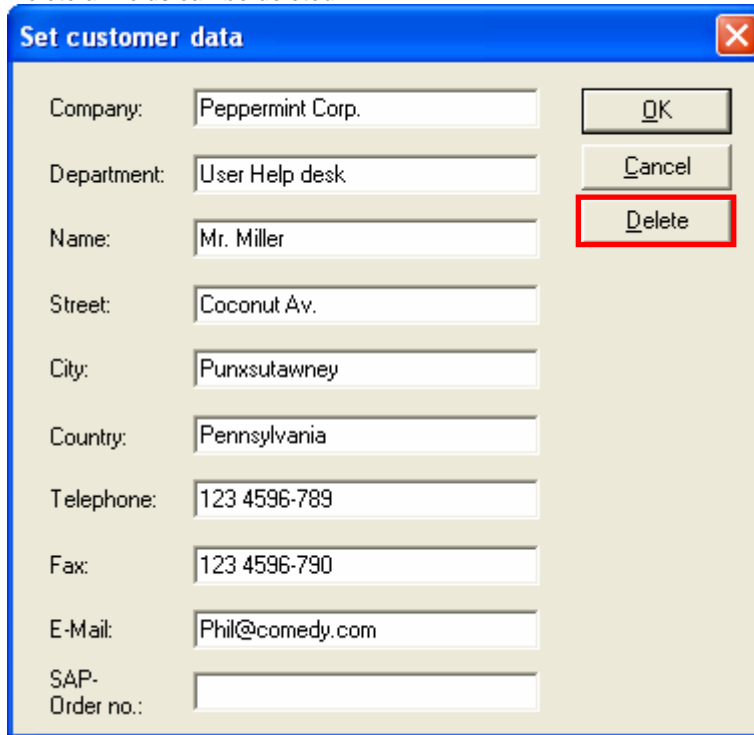
Several small Changes

- Changes of toolbars
 - Changed grouping in order to find belonging functions easier
 - Added function button for 'Show price window'
 - Added function button to start the 'console assistant'



- Easy deletion of customer data

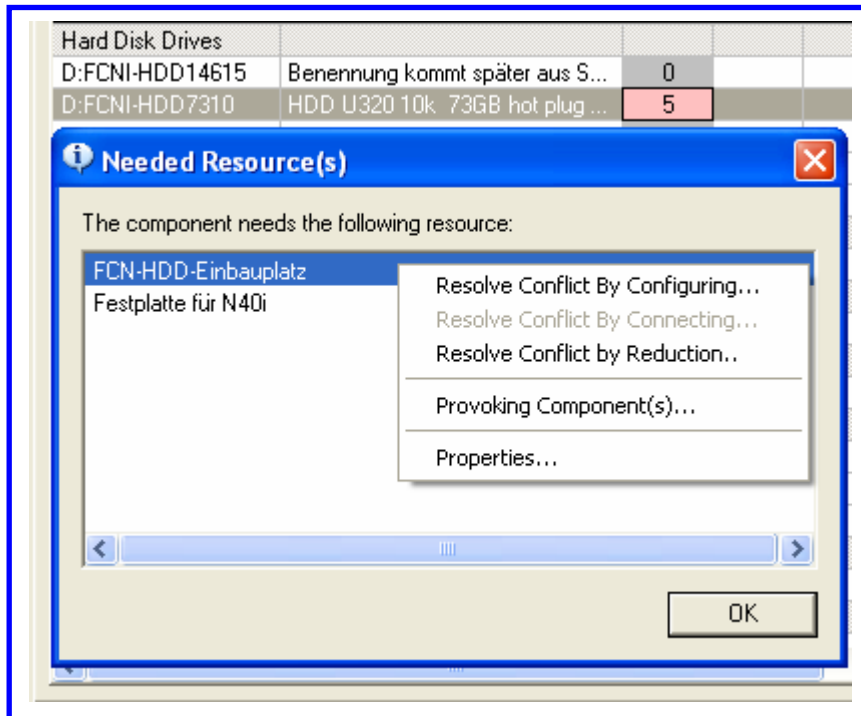
When opening function *Options - set customer data* or when opening any export function, the customer data will be queried. Initially they are filled with the data of the last entered configuration. With the new function button *Delete all fields* can be deleted.



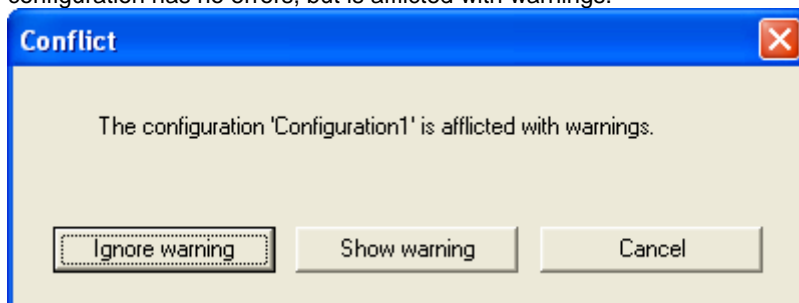
Field	Value
Company:	Peppermint Corp.
Department:	User Help desk
Name:	Mr. Miller
Street:	Coconut Av.
City:	Punxsutawney
Country:	Pennsylvania
Telephone:	123 4596-789
Fax:	123 4596-790
E-Mail:	Phil@comedy.com
SAP-Order no.:	

Several small Changes

- Enhanced context function for red fields in the configuration view
 - With 'Check on the Fly' the configuration of built-in components will be checked and possible errors / conditions will be displayed at once with colour.
 - In case of an over-configuration the field will be filled with red colour and the user will have the possibility to get more information about the cause by clicking of context function "Show needed resource(s)".
 - With the new version the user is in charge of extensive functions – now he can proceed other functions with the context function.

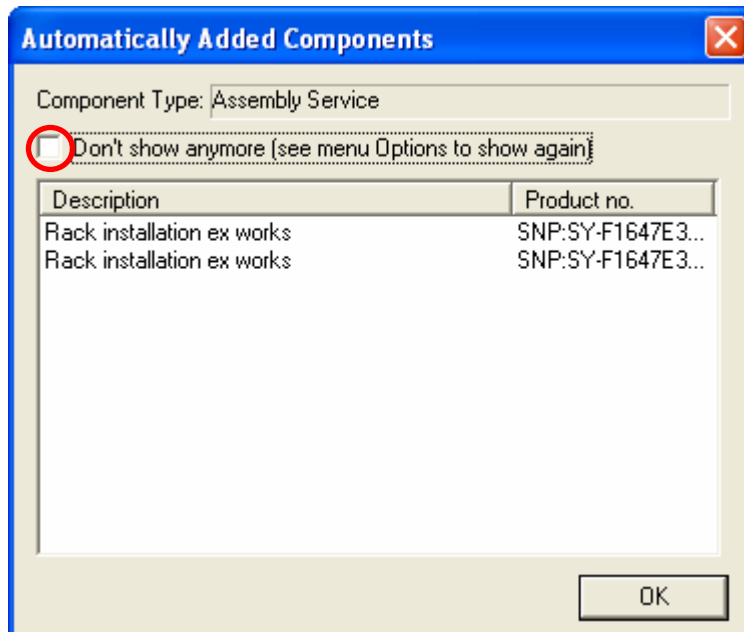


- When starting the export functions (WORD, EXCEL and report) a corresponding conflict will appear that the configuration has no errors, but is afflicted with warnings.



Several small Changes

- Display of automatically added components
 - From time to time several types of components 'appeared', which were added in the SA (sometimes in the PCA) automatically in the background by the system. The causes – until now not yet recognised by the user – for the adding's are different:
 - Dummy panels for racks would disturb the user in the rack configuration as they appear always.
 - Assembly services for rack servers are determined thereby, in which area the cause is configured. Is it ordered loose it will be dropped, if it should be ordered in a rack, it is mandatory. Something similar is valid for special costs, which occur for a hybrid rack.
 - The different SETUP fees for customizing-services depend on the different systems and on the different types of services. There are special rules:.
 - All have in common that the automatically added components are added when the configuration is 'done'. This occurs when the configuration is saved, exported or created as order file.
 - To inform the user about the increasing amount of components (these have to be paid) for every occurrence a component-specific display will appear for all added components.
 - The displays can be turned off component type specifically so that the experienced user will not be disturbed. The reactivation of the display can be done via the option menu.



- Complete revision of the menus
 - Many *Edit* functions were added which were previously available in the context function.
 - Complete display of all available shortcut functions (CTRL + ??) in the menus
 - Re-sorting of some menus
 - Adding of new menu terms for a better overview and better accessibility of the functions (for example *Catalog*)

Several small Changes

- Copy text of component information
 - Every copied component via context menu function or CTRL-C can now be inserted as text in other applications.
 - Following properties of the component are copied and pasted:
 - Order number, name and visible prices
 - The function with graphic object remains unchanged, where they can be pasted in as graphics (for example PowerPoint)
- In the rack view and in the exports the rack diagram is created without connection lines (caused by an existing cabling), as this has become very unclear due to the many connections.
- In the option menu, the country filter affects now also the add-on products summarised in the yellow box.
- In the overview tab of the configuration view the component status will be displayed in a new column 'Status'. Thus it is possible to indicate also for the carrier system corresponding information.
- Additional reference texts in the system selection assistant in order to lead the user

For advanced information and training:

Training Offer

Training Programs are offered on the topic of 'Configuration Tools' and can be adapted to meet the needs of the individual participant group.

Course objectives:	To provide a functional and performance overview To create simple and complex configuration To provide practical experience of tool handling through exercises
Target group:	Technical consultants, sales employees (with and without previous knowledge of the tool) with the relevant product know-how
Language:	German or English
Duration:	3 hours to 2 days (depending on individual needs)
Possible Topics:	Configuration of individual systems Assembly of racks and rack modules Partitioning for PRIMEPOWER systems External cabling and power assistant Plausibility checking Creation and use of configuration templates Import and Export functions
Contact:	christian.buechner@fujitsu-siemens.com

<p>Published by department:</p> <p>Metin Yazici FSC IS PLES</p> <p>Tel.: ++49 5251 8 20076 metin.yazici@fujitsu-siemens.com http://www.fujitsu-siemens.de/</p>	<p>Delivery subject to availability, specifications subject to change without notice, corrections of errors and omissions excepted.</p> <p>All conditions quoted are recommended cost prices in EURO excl. VAT (unless stated otherwise in the text). All hardware and software names used are brand names and/or trademarks of their respective holders.</p> <p>Copyright © Fujitsu Siemens Computers, 03/2005</p>	<p>Extranet: http://extranet.fujitsu-siemens.com/</p>	<p>Distribution: Intern: X Extern: X</p>
--	---	---	---