

## PC New Version 6.5.5 and System Architect

Planned Release: 21. June 2005

Category: PC- /SystemArchitect

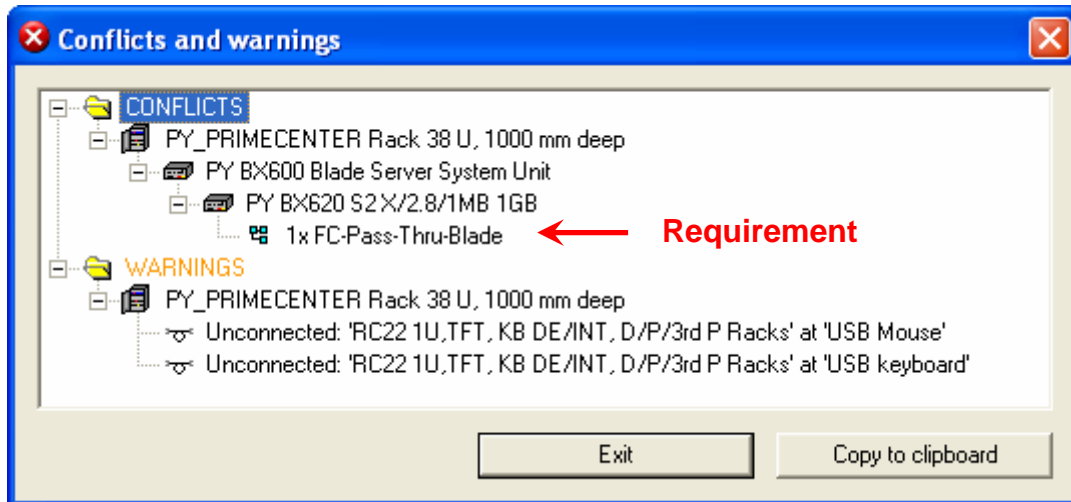
Content: Tool Changes

### Overview of the new functions / Useful for the User

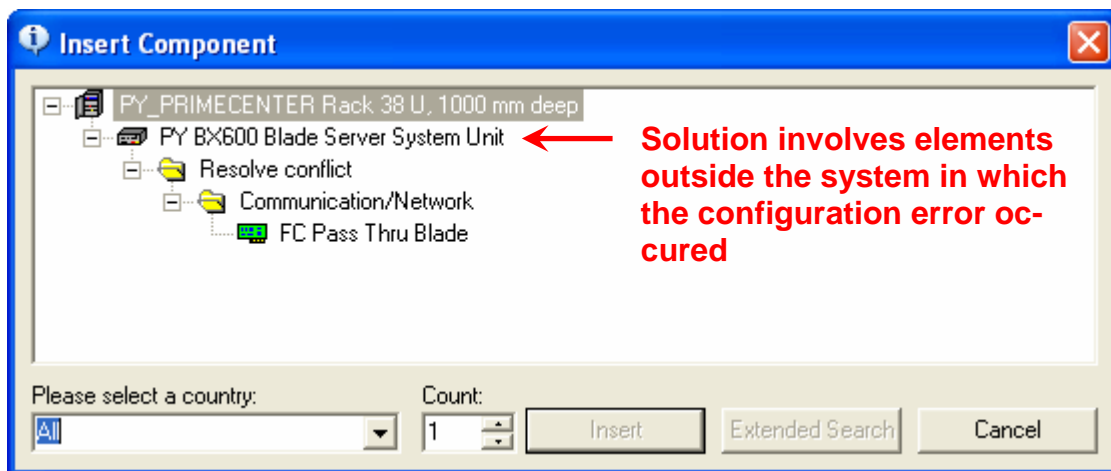
- Resolving of conflicts outside a basic unit  
**Errorless configurations for blade server**
- Warnings for mechanic overload of racks  
**Enhanced user information**
- Separation of conflicts and warnings within the power checking  
**Smaller 'power errors' create no more configurations with conflicts**
- Enhanced error messages and EXCEL-Exports within the power environment  
**Enhanced user information**
- Enhanced functions within the power assistant  
**Avoidance of incorrect orders**

### Resolving of conflicts outside a base unit

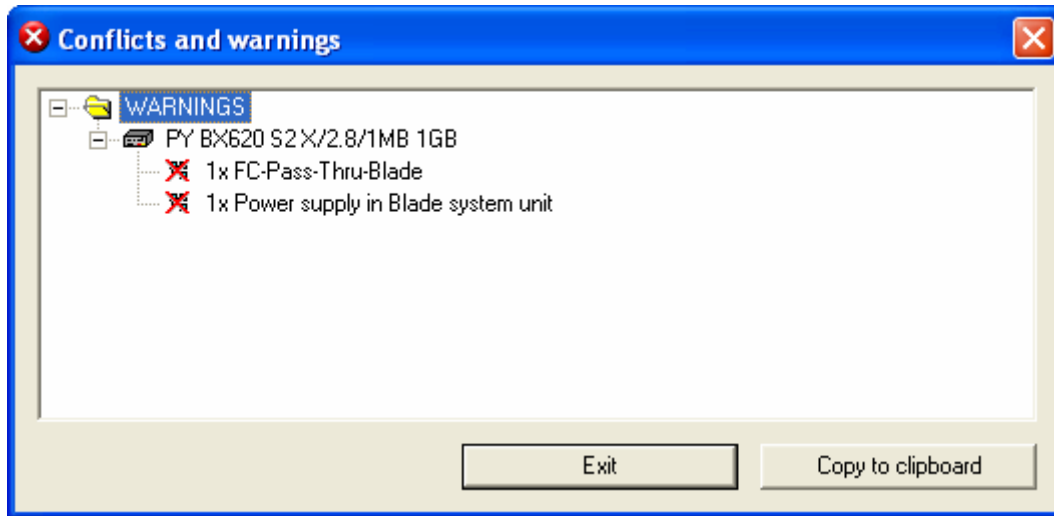
- The past concept for the resolving of conflicts was enhanced as certain errors now can also be resolved outside the causing system – **without using cables**.
- The definition, which errors can be solved that way, will be determined by the database not by the user.
- In the concrete case the need of an I/O-module within a blade server will be solved by a Switch or a Path-Thru-module, which has to be configured first in the blade frame!



- With the function Resolve Conflict by Configuration special conflict resolve's are offered in the database, according to special authorizations. Those conflict resolve's are outside the causing system.

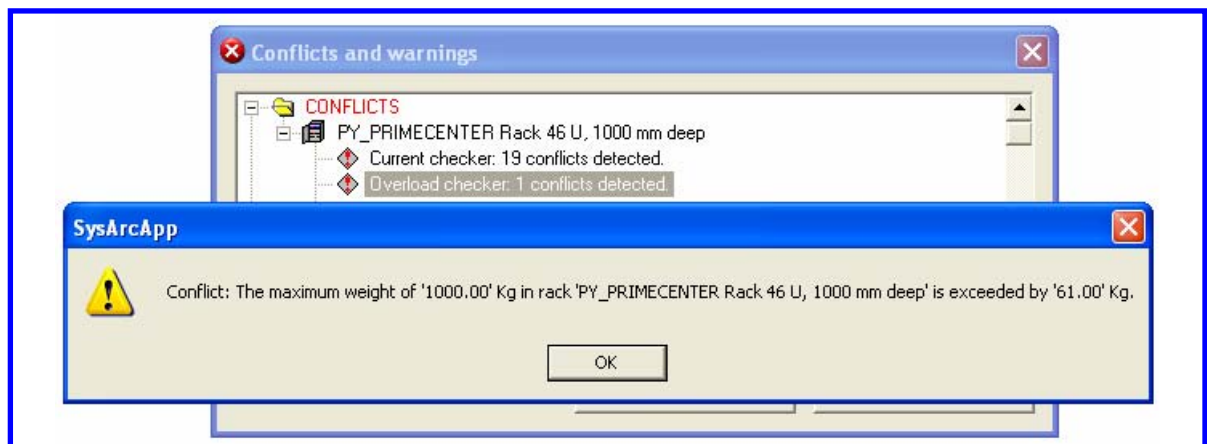


- After the selection of the component the conflict will be resolved after selecting the complete system (blade frame with all its blade servers). The selective testing of a server, however, will indicate this error as non-resolving warning, as due to the selection of the bladeframe this is not considered and thus the existing conflict solver cannot be verified.



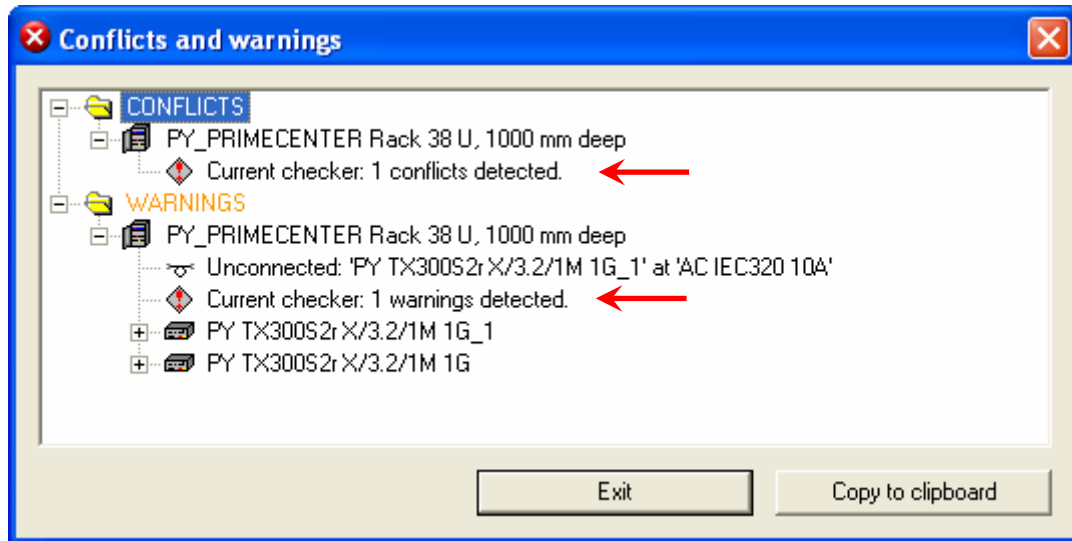
### Warnings for mechanic overload of racks

- With the release of the new version the maximally possible weight of a rack within the configuration test will be compared with the currently reached weight. In case of an overload an appropriate error message will be indicated.



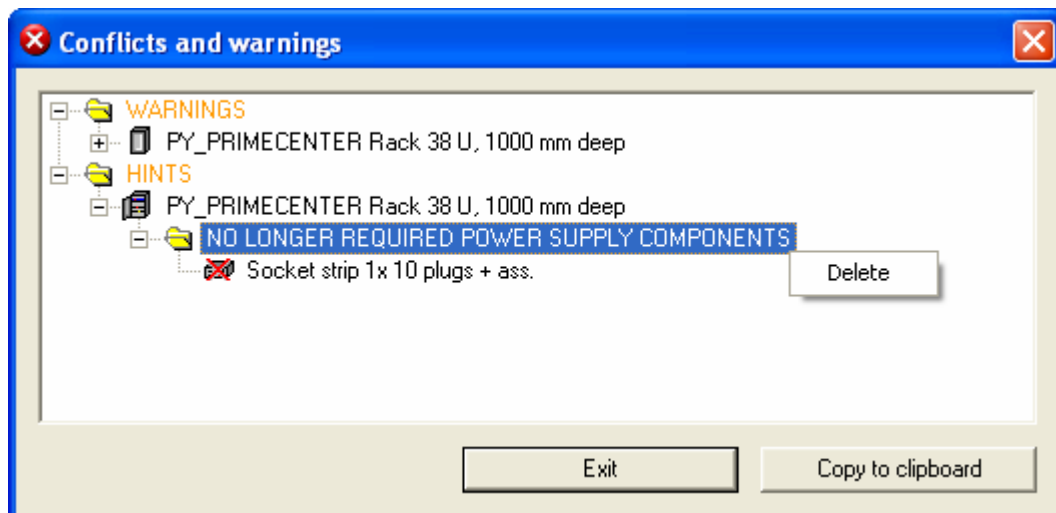
### Separation of conflicts and warnings references within the power checking

- The usual power testing always resulted in error warnings even for smaller errors, which had the consequence that the configuration could not be processed.
- With the new version uncritical errors will be indicated as warnings for operations (or manufacturing), all others (for example open connections or overloaded components) will be indicated as conflicts.

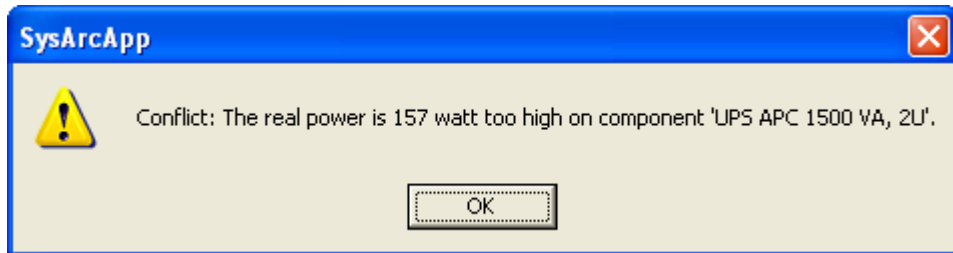


### Enhanced error messages and EXCEL-Exports within the power environment

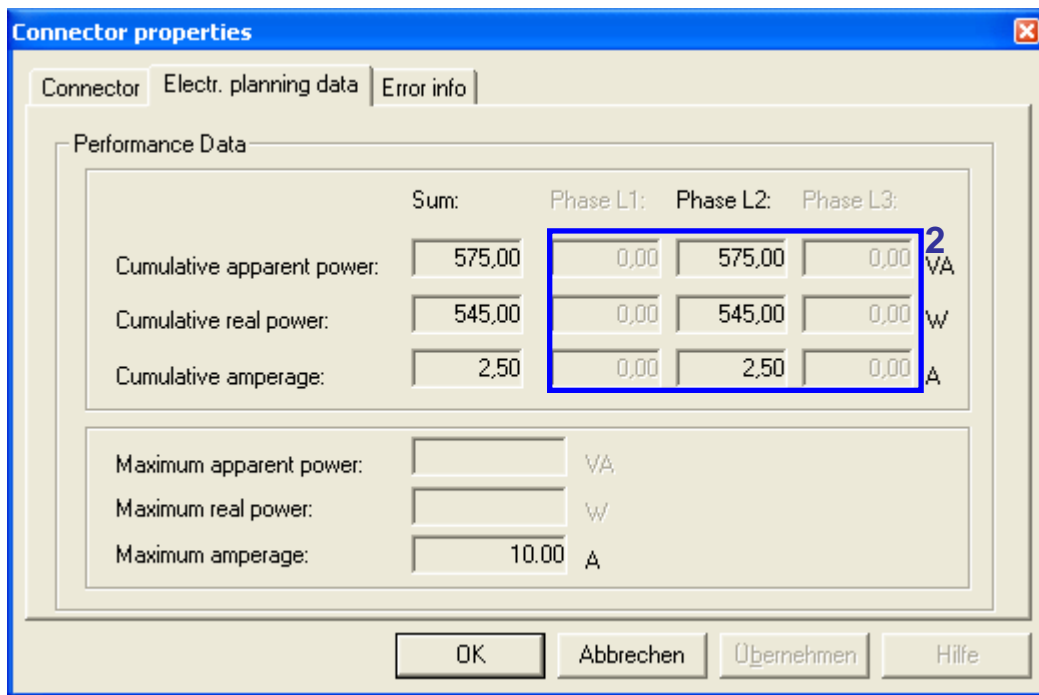
- Handling with missing data from the database  
Due to the increasing amount of information necessary for an errorless configuration and the normal operation of the assistants, it could be possible that the data entry for a certain parameter will be missing for some components. In this case a detailed error message will be indicated which will inform the user about the missing information.
- Deletion of no longer required power supply components  
All socket strips and UPSs that are not required will be displayed in a new category named *Hints* . With the context function those can be deleted separately or completely directly from the testing dialog.



- Indication of missing power when UPSs are overloaded  
 Within the power testing the load of the used UPSs was always checked and, if necessary, an error message was indicated. Additionally a message will occur how high the load excess will be to give the user reference with which UPS the missing load difference can be compensated.



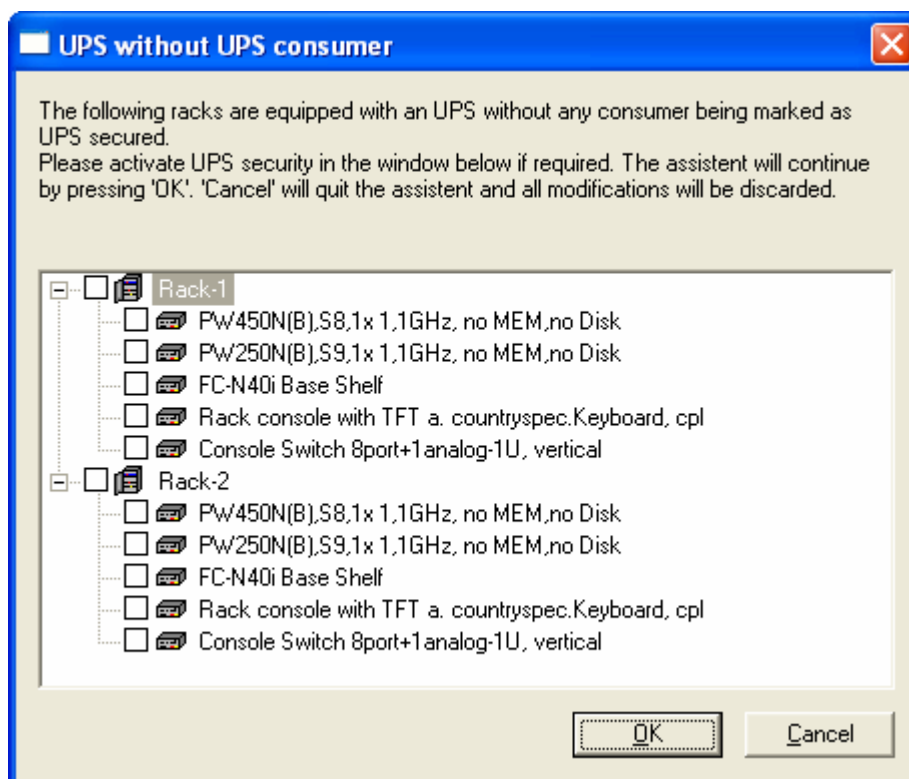
- Additional book in the EXCEL-Export  
 A further book 'connections' shows, which consumers are connected by which socket strip (or UPS). Additionally the total loads and the reserves of the connections will be displayed. In contrast to the usual procedure the display of this information will not be shown in the part list (Menu View – reports)
- Format changes of indication of electrical planning data



- Empty fields mean that there is no connection to the house connection for the appropriate phase.
- Grey zeros mean that the appropriate phase has connection to the house net, but, however, is not relevant for the just selected connector, as this is connected to the house net with the appropriate phase (see picture).
- With selection of a 3-phase component which is connected to the house net, all phases will be marked with black values. This applies also to a 3-phase connector which is connected to the house net.
- Additionally the field 'Maximum apparent power' will be always filled, if a socket strip will be selected.

## Enhanced functions within the power assistant

- The concept of the power testing and the power assistant is based on the fact that the power consumers (usually the servers of a rack) are characterized by different parameters (UPS-secured ( phase redundant/...)) and how they have to be connected or how the power assistant has to proceed cabling and component selection
- A UPS manually added to the rack **does not** mean that the consumers will be connected automatically. The reason for that are too many open factors for which a query would be too complicated and not transparent, as the power assistant can be started for several racks at the same time.
  - Which one of the currently available consumer are should be connected to the UPS (all or only one)?
  - What will be, if the UPS is too small or is not suitable for the consumers?
- In order to improve this situation, in the new version 6.5.5 it will be checked right after starting the assistant, if there are racks available which contain a UPS without a consumer marked as UPS-secured. In this cases a corresponding hint will appear and the user will have the possibility to mark complete racks or single systems as 'UPS-secured'.



For advanced information and training:

## Training Offer

**Training Programs are offered on the topic of 'Configuration Tools' and can be adapted to meet the needs of the individual participant group.**

<b>Course objectives:</b>	To provide a functional and performance overview To create simple and complex configuration To provide practical experience of tool handling through exercises
<b>Target group:</b>	Technical consultants, sales employees (with and without previous knowledge of the tool) with the relevant product know-how
<b>Language:</b>	German or English
<b>Duration:</b>	3 hours to 2 days (depending on individual needs)
<b>Possible Topics:</b>	Configuration of individual systems Assembly of racks and rack modules Partitioning for PRIMEPOWER systems External cabling and power assistant Plausibility checking Creation and use of configuration templates Import and Export functions
<b>Contact:</b>	<a href="mailto:christian.buechner@fujitsu-siemens.com">christian.buechner@fujitsu-siemens.com</a>

<p><b>Published by department:</b></p> <p>Metin Yazici FSC IS PLES</p> <p>Tel.: ++49 5251 8 20076 <a href="mailto:metin.yazici@fujitsu-siemens.com">metin.yazici@fujitsu-siemens.com</a> <a href="http://www.fujitsu-siemens.de/">http://www.fujitsu-siemens.de/</a></p>	<p>Delivery subject to availability, specifications subject to change without notice, corrections of errors and omissions excepted.</p> <p>All conditions quoted are recommended cost prices in EURO excl. VAT (unless stated otherwise in the text). All hardware and software names used are brand names and/or trademarks of their respective holders.</p> <p>Copyright © Fujitsu Siemens Computers, 03/2005</p>	<p><b>Extranet:</b> <a href="http://extranet.fujitsu-siemens.com/">http://extranet.fujitsu-siemens.com/</a></p>	<p><b>Distribution:</b> Intern: X Extern: X</p>
--	---	---	---