

New Version 6.3 PC and System Architect Scheduled Release: 30th April 2004

Category: PC- /SystemArchitect

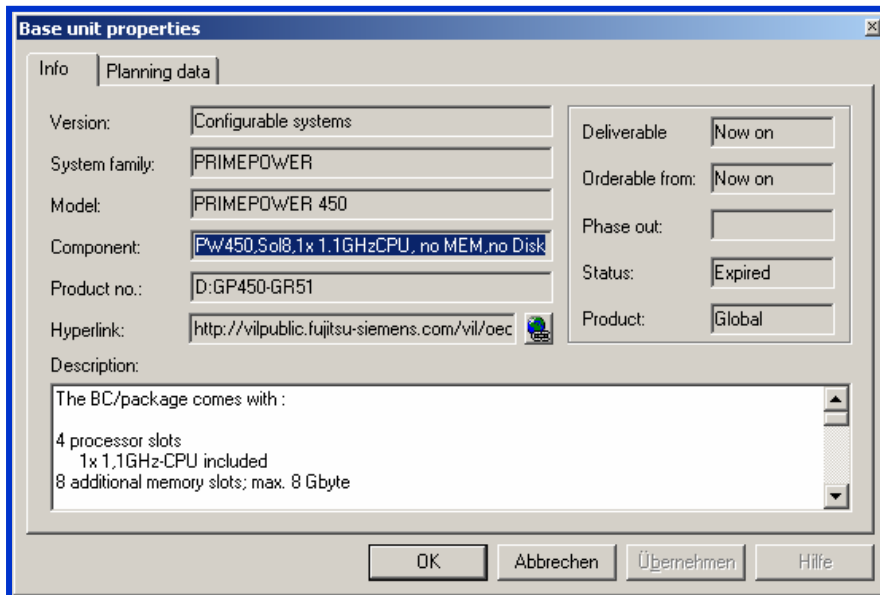
Content: Tool Change

Overview of the new Functions / Useful for the user

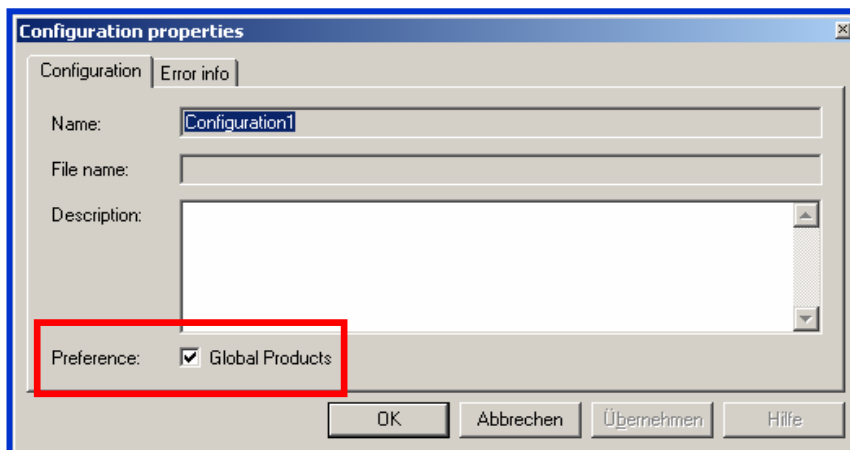
- Introduction of new Filter 'Global Product'
filters worldwide available components
- System Selection Assistant for rack components
Solution Selection Assistant for standard catalogues and also
for the individually created catalogues
Enhancement of functionalities to all components in the system
selection window
- USV-Selection: Allowance of preferences and technical rules
Assistant considered all UPS
- Dummy partition
Marking of not yet selected partition units
- General 2-phase Cabling
Improved console-cabling
- Check for Update: Petition of access data for individual firewalls
Update within individual protected network now possible
- Several small changes
better operation, better evidence

Introduction of new Filter 'Global Product'

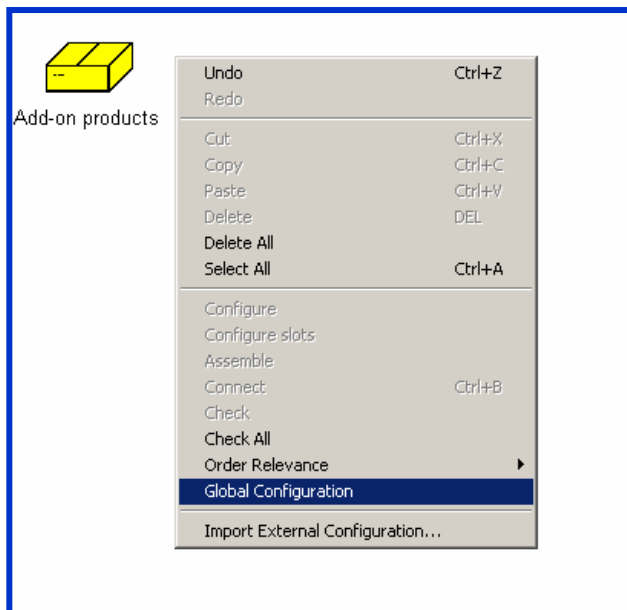
- Special Design for worldwide available components. Type of component (base unit, build-in, option and add-ons) is not of importance.
- At the moment only available for PRIMEPOWER-Components (entered in the database)
- The components global property is generally recognizable via context menu *Properties*



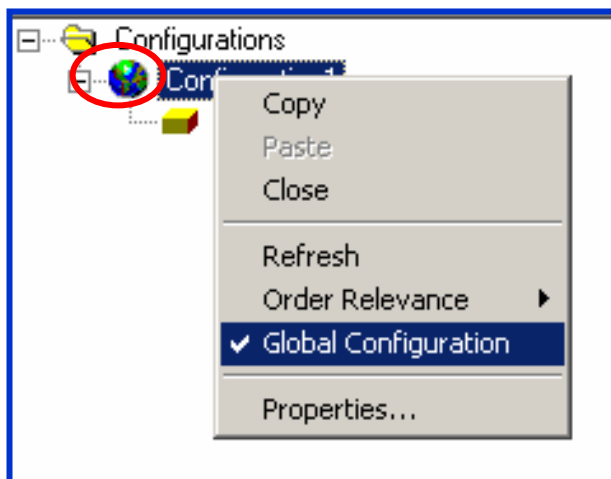
- The evidence of global products on the surface is controllers by an open configuration marks as 'global'. This is a simple flag set when configuring.
- This can happen in several stages:
 - Via *File - Properties* (in PCA and SA):



- o Via context menu on open space within the standard view (only in SA):



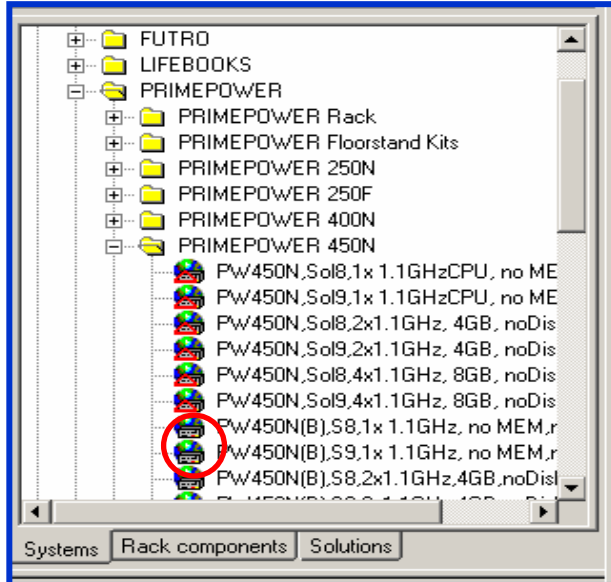
- o Via context menu of the configuration (only in SA):



- A 'global' configuration is recognizable with the changed icons (see picture before)

- As soon as an opened 'global' configuration is displayed, all products marked as global are represented by another icon

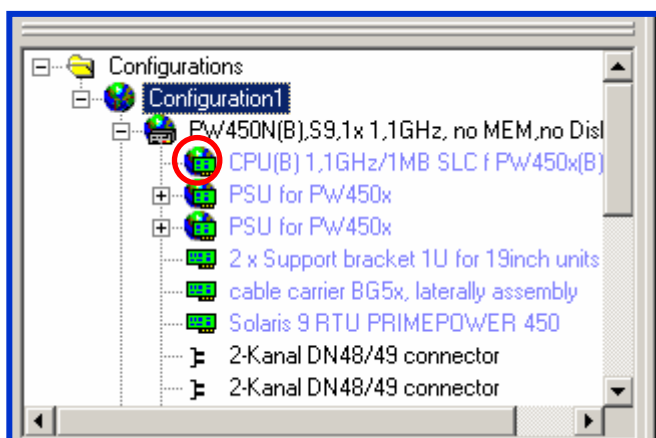
- In the System Selection:



- In the Component Selection:

Hardware		Software		Service
Product no.	Description	Count	RLP / Euro	ERRP / E...
Processor				
D:GP70P-ZE05	CPU(B) 1,1GHz/1MB SLC f Pw45...	1	2.600,00	P
Memory				
D:GP70P-SP01	Memory 1 GByte for Pw250x, Pw...	0	900,00	P
D:GP70P-SP02	Memory 2 GByte for Pw250x Pw4...	0	1.800,00	P
D:GP70P-SP03	Memory 4 GByte f Pw250x(BC) P...	0	4.400,00	P
Graphics				
D:GP70F-CC11	Graphic Controller 48 bit	0	400,00	P
Removable Media Dri...				

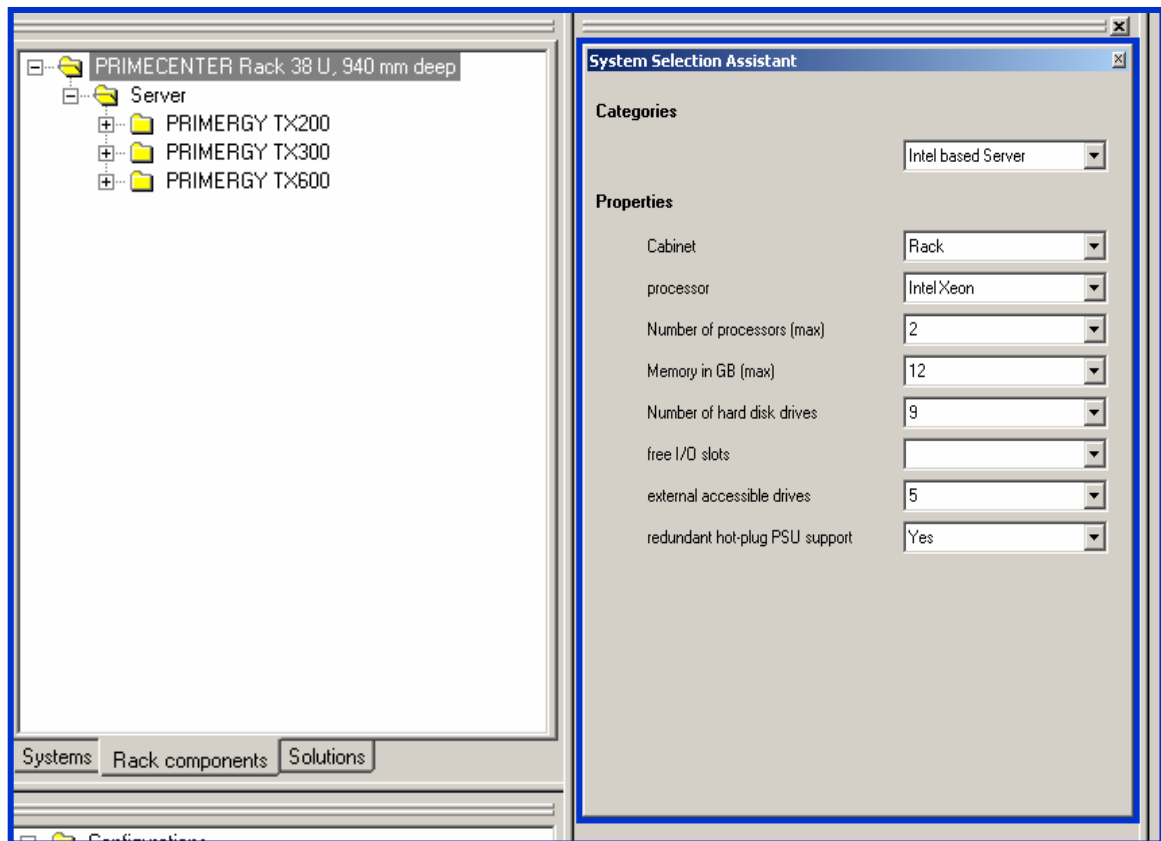
- In the Configuration View and Overview:



- A 'global' configuration is marked correspondingly on the first page of the exports WORD, EXCEL & reports. In this case all global components are marked specially.

System Selection Assistant in the rack view

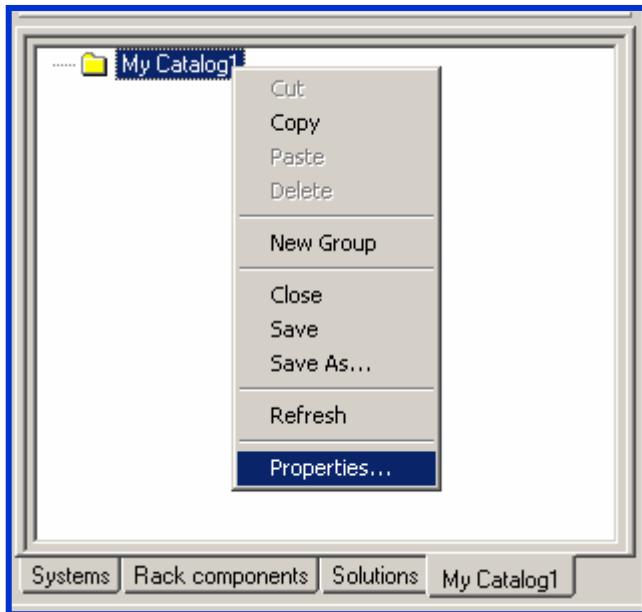
- The previous Filter of the System Selection Assistant was exclusively limited for the tab *Systems*. Rackserver could also be filtered there, which were always treated after the selection as slide-in racks. The Assistant could not be used with opened rack assembly view (rack view) before.
- With the new version, the system selection assistant causes dependent upon the respectively activated view and is available both in the Floorstand-View, and in the rack-view with same functional scope.



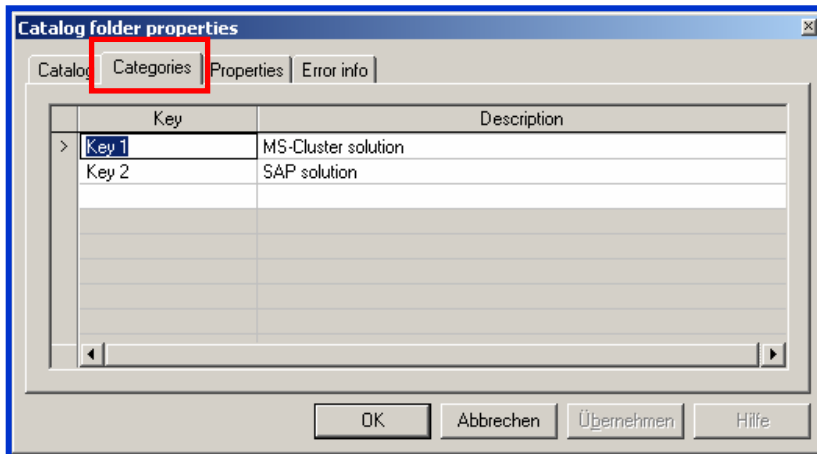
Solution-Selection Assistant

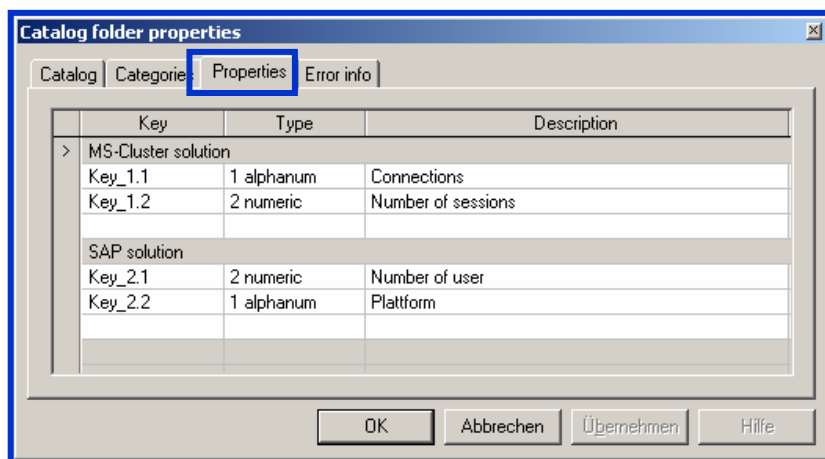
- Those attributes described in the section above also apply to catalogues. It is not significant whether the catalogues were created individually, whether they are created centrally and distributed as displayed on tab *Solutions*.
- With the Solution Selection Assistant corresponding catalogue entries should be found according to the filter criteria chosen before. This happens 100% analogously to the system selection.
- With the categories and the specific criteria valid solutions are filtered, without the user interpreting the catalogue structure or entry names.
- In contrast to the systems, categories and attributes are defined individually. Within *Solutions* the catalogues are created centrally, while the user must enter corresponding values in individually created catalogues to use the functionality.

- The catalogues categories and their specific properties have to be designed first via context function *Properties*.

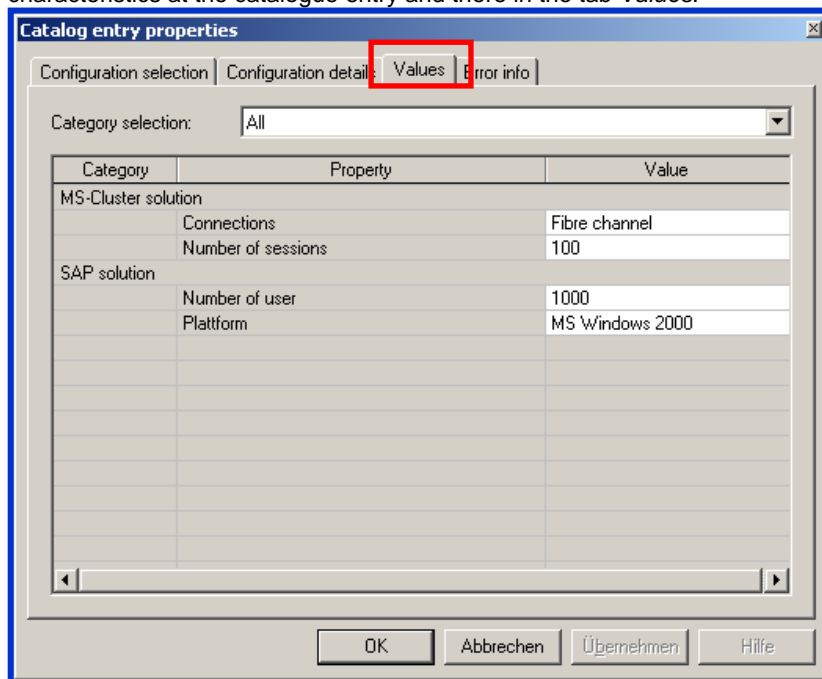


- The following description is only for individually created catalogues. For centrally distributed catalogues the described tabs are **not visible**.
- Before the corresponding field names can be entered within Properties the categories have to be defined first.





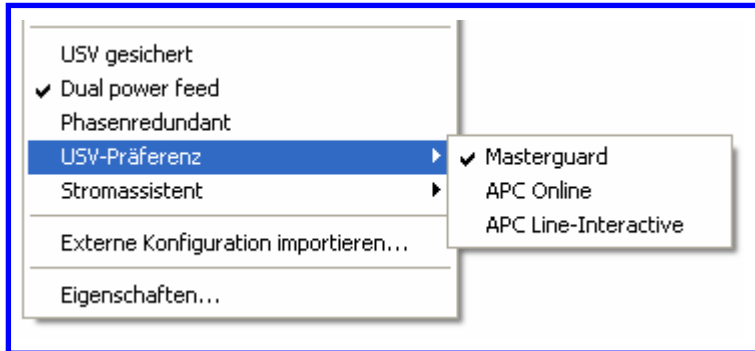
- Further rules:
 - The key has to be allocated only once, there are no restrictions in naming the key. By separating key and name, it is possible to change the (displayed) name afterwards without destroying the current structure.
 - The types definition in the characteristics supervises the petition of the values and drives simultaneously the analysis. Alphanumeric values will be tested for 'equal' while numeric values are tested for 'greater than'
 - Between input fields can be navigated with CTRL + Cursor Control Key
 - Entries are deleted via a corresponding context function. The deleting of a category means the simultaneous deleting of all assigned characteristics
 - ENTER comes up to the 'OK' -Button - ESC comes up to 'Cancel'
- After the general definition of categories and characteristics within the catalogue, the corresponding values must be registered now to the single entries within the catalogue. This takes place via the context function characteristics at the catalogue entry and there in the tab *Values*.



- The categories selection in the upper part of the window filters the display (reasonable, if many categories and characteristics are defined). The rules named before are also valid in this window.
- As already mentioned before, the petitions described before for the use of the selection assistant are required. The catalogues can be used as usual (without entries).

Power Assistant – Consideration of Preferences within UPS-selection

- Previously only firmly defined UPS` of **one** type were used by the power assistant in case of an UPS-protection. Other UPS-types that were added manually were not recognized by the power test and led to error messages.
- With Version 6.3, there is an additional attribute *preferred UPS*, that can be set differently in every rack.



- In contrast to the other attributes like 'UPS-secure', 'Dual Power feed' and 'Phase redundant', the attribute UPS preference in separate servers cannot be changed later. It's an attribute for racks which is obligatory within the racks for all users.
- The initial value is taken from the database and corresponds to the UPS-type which was formerly applied by the assistant.
- When required the user can change the attribute – **before starting** the assistant – so the corresponding preference can be considered.
- The preference is affected by an existing and contrary technical rule (see next point)

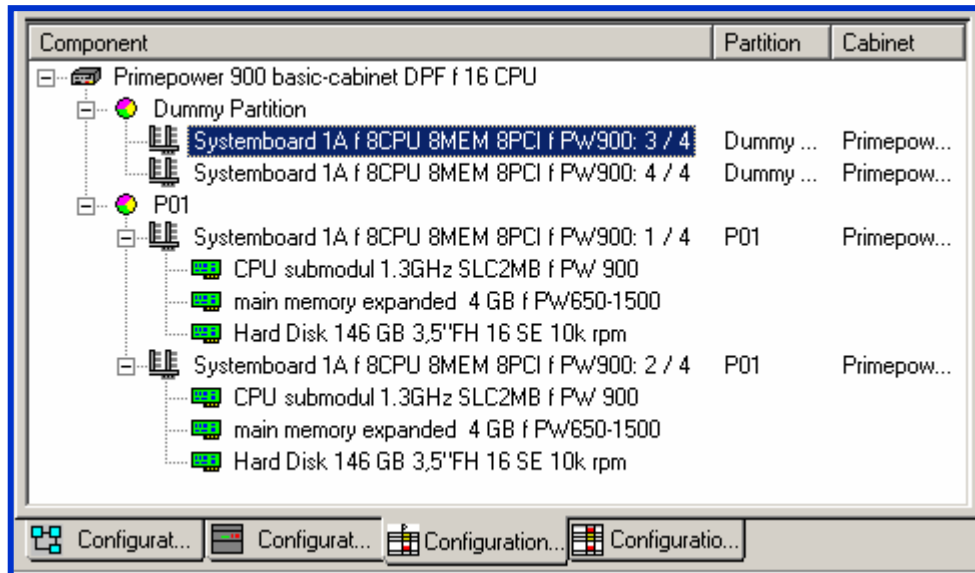
Power Assistant and Power Test: Consideration of technical rules in UPS Selection

- In dependence of the set attributes 'Dual Power feed' and 'Phase redundant' different cabling types and selection criteria for UPS-types apply in case of UPS-protection for PRIMERGY-Systems, PRIMEPOWER-Systems and STORAGE-Products.
- These are deposited and be considered in an internal table by the current assistant.
- In case of manual power cabling, the compliance of these rules is reviewed in the power test also.
- There is the possibility that more than one cabling type is defined as permitted - the assistant, however, always uses only **one preferred rule**.
- As already mentioned before, the set preference in the rack is affected by the technical rule. In this case several different UPS-types in a rack could possibly configure through the assistant.

Dummy Partition

- When configuring partitionable PRIMEPOWER-XA-Systems it often occurs that single XSBs (parts of a split system board) remain unused. In order to summarize them clearly, the dummy partition was introduced in the corresponding servers.
- In the past, these XSBs must either:
 - Be assigned to any productive partition which led to a worse evidence. The configuration was not corresponding to the reality.
 - Or had to be assigned to a new defined partition (so called 'Dummy') in which all of the minimal requirements (processor, main memory, hard disk, console cabling...) have to be completed by non-order-relevant components

- With the latest Version a *Dummy-Partition* was already designed initially where not required partition units can be assigned. There is **no test** for the there parked empty XSBs – The otherwise required components which are not configured in this case do not lead to any conflicts.



- For now any unspecifically added Systemboard will be assigned to this dummy partition. However it is not allowed to park entire Systemboards.

2-phase Cabling

- The existence of console adapters with more than one connector was implemented already in version 6.2.
- These were not all considered in all cabling possibilities. In some cases for this 2-phase cabling the adapters had to be added manually by the user first in order to carry out subsequently the remaining cabling with tool-support in the cabling-selection.
- In order to create a general possibility for multi-stage connections, the Handling of the cabling was unified:
 - There have to be always selected two connectors (socket or connector) or one connector and a carrier (in general a basic unit)
 - If the selections are on or within carriers, generally all available one-phase **and** two-phase connections are offered
 - If at least one selection is outside of the carrier, a possible direct or one-phase cabling is reviewed.
 - All desired cabling possibilities can also be expressed through graphic drawing of a line between two sockets.
 - Each step of the connection can consist of usual cables, extension cables, firm and loose connection cables or adapters
 - A direct connection between two adapters is not possible
 - A selection of more than two connectors is possible. In this case only one-phase connections (cable or adapter) are offered which are able to connect the selected connectors. Those could have additional connectors which remain open.

For Update check: petition of access data for individual firewalls

- When entering the access data (login & password) for the update-server via the program *Testing of Updates configuring* only data for access into the FSC network could be deposited previously.
- The deposition of access data to leave protected networks is now possible with V6.3. The petition of these data resulted on the second page of the program *Updates testing for configure*.



Small Changes

- The adjusted screen styles and types are not changed, also after starting again the SA.
- New symbol for configurable built-in components
- The function *ASK-Import* was removed
- The Shortcuts 'CTRL-C' and 'CTRL-V' also work within in the cable view
- The function *order relevance* is now also available for
 - The whole configuration
 - The 'Box' for add on products
 - Multi selections in Floorstand- and Rackview
- Mail address of reviser
- Petition of 'Number' for the components by 'Resolve Conflicts By Configuring'
- Petition of 'Path options' for the catalogues and configurations
- Add on hints for automatically dragged components (blue components)
 - as 'Tool tip' at the configuration view in the tab 'Configuration'
 - as additional description in the property window

For advanced information and training:

Training Offer

Training Programs are offered on the topic of 'Configuration Tools' and can be adapted to meet the needs of the individual participant group.

Course objectives:	To provide a functional and performance overview To create simple and complex configuration To provide practical experience of tool handling through exercises
Target group:	Technical consultants, sales employees (with and without previous knowledge of the tool) with the relevant product know-how
Language:	German or English
Duration:	3 hours to 2 days (depending on individual needs)
Possible Topics:	Configuration of individual systems Assembly of racks and rack modules HW-Partitioning for PRIMEPOWER systems External cabling / power assistant Plausibility checking Creation and use of configuration templates Import and Export functions
Contact:	christian.buechner@fujitsu-siemens.com

<p>Published by department:</p> <p>Christian Buechner FSC SMCS G</p> <p>Telefon: ++49 6172 188 6073 christian.buechner@fujitsu-siemens.com http://www.fujitsu-siemens.de/</p>	<p>Delivery subject to availability, specifications subject to change without notice, correction of errors and omissions excepted.</p> <p>All conditions quoted are recommended cost prices in EURO excl. VAT (unless stated otherwise in the text). All hardware and software names used are brand names and/or trademarks of their respective holders.</p> <p>Copyright © Fujitsu Siemens Computers, 04/2004</p>	<p>Extranet: http://extranet.fujitsu-siemens.com/</p>	<p>Distribution: Intern: X Extern: X</p>
---	--	---	---