

New Version 6.2 PC and System Architect Scheduled Release: 17th November 2003

Category: PC- /SystemArchitect

Content: Tool Change

Overview of the new Functions / Useful for the user

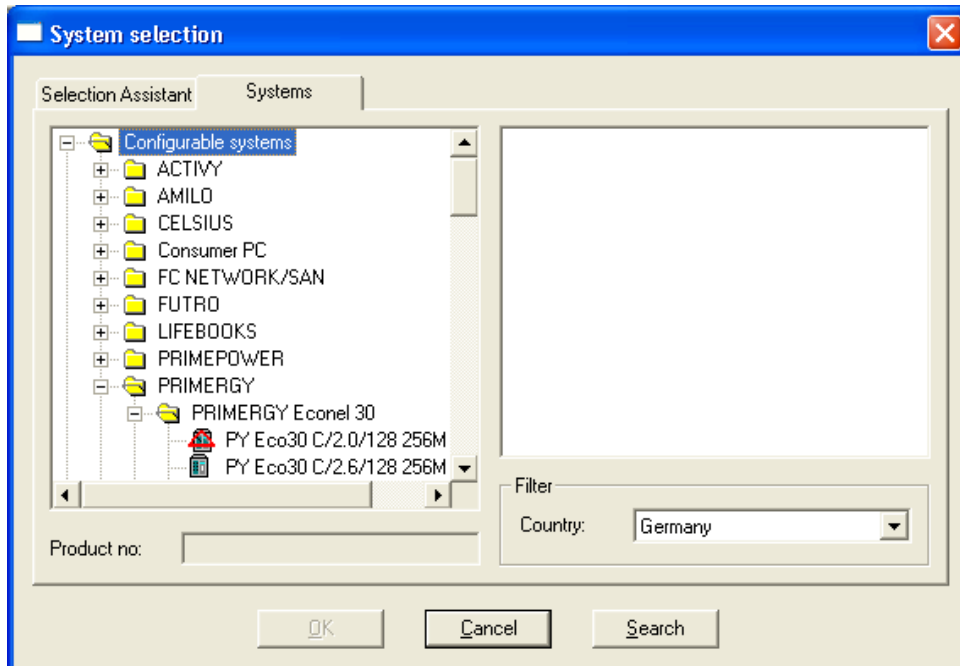
- **Changed Systemselection in the PCA**
Harmonization of the proceeding between SA and PCA
- **New Design for Product phased out and availability Information**
better information in the component selection
- **Upgrade Components**
quick access particularly to components for no longer orderable systems
- **Optimized Access to centrally created solution libraries**
create complex configurations by one mouse click
- **Introduction of new slot-types**
improved differentiation with Slot-Assignment
- **Extended Exports: planning data, Slot-Assignment, Cable Plan**
improved documentation, error-free manufacturing and on-site installation
- **Changed Adapter Handling, introduction of adapters with several connectors**
complete and error free console cabling
- **New functions in the cable view**
easier and clearer component cabling
- **Several small changes**
better operation, better evidence
- **Power Cabling and power cabling assistant**
complete and error free configuration of all power components incl. UPS

Enhancement of data

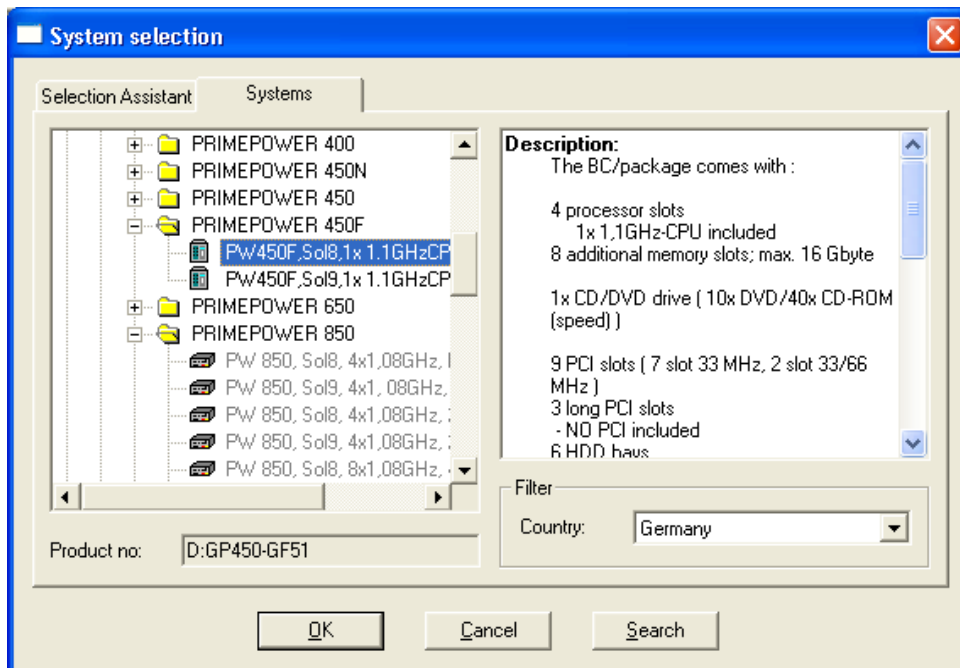
- **New categories for STORAGE-Components and 'SPARC Based Servers' in System Selection-Assistant**
easy support with system selection

Changed system selection in the PC-Architect (PCA)

- The System selection in the PCA starts with the System Selection Assistant which is used as usual. Now the choice is available for the unfiltered system offer on the tab 'systems' analogously like in the system-architect (SA) in a tree structure
- The availability info is recognizable by the use of graphic files
- Up to Racks and PRIMEPOWER cabinet systems **all** systems are now listed in the tree structure



- The descriptions are indicated after marking a system without selecting the system for configuration
- Additional descriptions for the marked system are recallable via the corresponding context function
- The systems which can not be configured with the PCA due to their complexity, are displayed in grey



- The selection of a system results from double click on the symbol line in the selection tree or by click on the OK-Button after marking a system
- By selecting a grey system a corresponding indication appears that the system can not be configured with the PCA

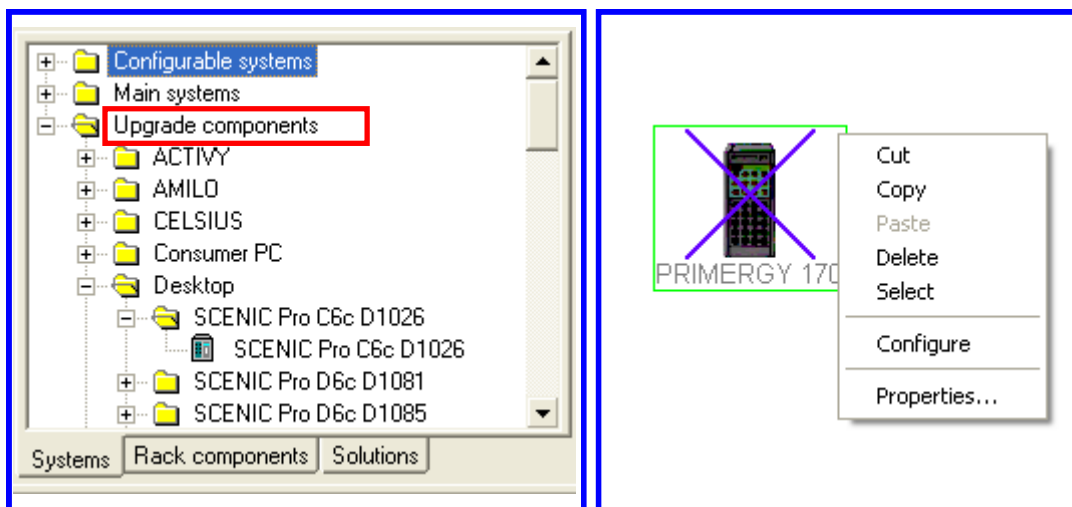
New Design for Product phased out and Availability Information

- In the configuration view (for basic unities), in the Rack basket (for Rack built-in components with height 0) and in the box (for periphery parts, add-on components) the columns for the availability information were redesigned
 - Phase out: The component is disposable until indicated date – afterwards only 'while stocks last'. This condition is then marked by status 'A' and by the red triangle in the icon. Components which are not available are not indicated.
 - Orderable from: The new component ist not orderable until indicated date. This will be additionally indicated by status '29'. The status information is prior to the date field. ASK-Export (Order generation) is not possible with configured components with status '29'.
 - Deliverable from: The new component could possibly be ordered, but the initial delivery can only take place from indicated date on
 - Next delivery: Due to supply shortages the component is not available until indicated date

Hardware		Software			Service			
Product no.	Description	Count	LKP / ...	Status	Phase out	Orderable from	Deliverable from	Next delivery
Memory								
S26361-F276...	Mem 256MB DDR-RAM...	1	189,00					
S26361-F276...	Mem 512MB DDR-RAM...	0	384,00					
S26361-F276...	Mem 1GB DDR-RAM P...	0	772,00					
Removable ...								
SNP:SY-F22...	CD-ROM ATAPI	0	46,00					
SNP:SY-F22...	DVD-ROM ATAPI	0	81,00					
S26361-F300...	CD-RW / DVD ATAPI	0	138,00					
S26361-F223...	Tape Drv DAT DDS4 2...	0	846,00					
S26361-F223...	Tape Drv DAT DDS4 2...	0	960,00					
S26361-F223...	Tape Drv DAT DDS4 6...	0	2.503,00					
S26361-F284...	Tape Drv DDS Gen5 36...	0	1.349,00					
S26361-F284...	Tape Drv VXA-2 80GB ...	0	1.349,00					
S26361-F223...	Tape Drv SLR 7 20GB ...	0	1.052,00	A				
S26361-F257...	Tape Drv SLR 60 30GB...	0	1.772,00	A				

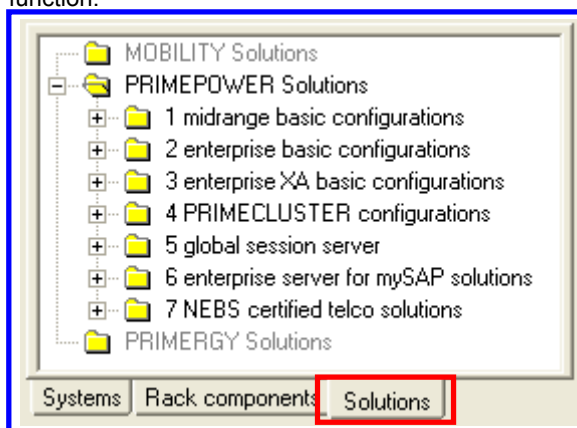
Upgrade Components (Step I)

- In the System Selection Window on the first level there is a third folder called 'Upgrade components' available. There are **all** models to be found (also those which are not orderable any more) for which there are still **orderable components as "Option"**.
- There are no upgrade components for PRIMEPOWER and most of the STORAGE Systems available now – this is planned for step II
- The models are summarised into their superordinated families.
- To enable analog operation to an orderable *System*, for each upgrade model one **artificial truss** system was created which can be selected by double click in the PCA or per Drag&Drop in the SA. This 'System' will appear as non order relevant basic unit. This feature can not be changed!
- In the configuration view for these 'Systems' only options can be selected. There will be no verification (maxima, dependences to other components, etc...) for the selected components – this is planned for step II



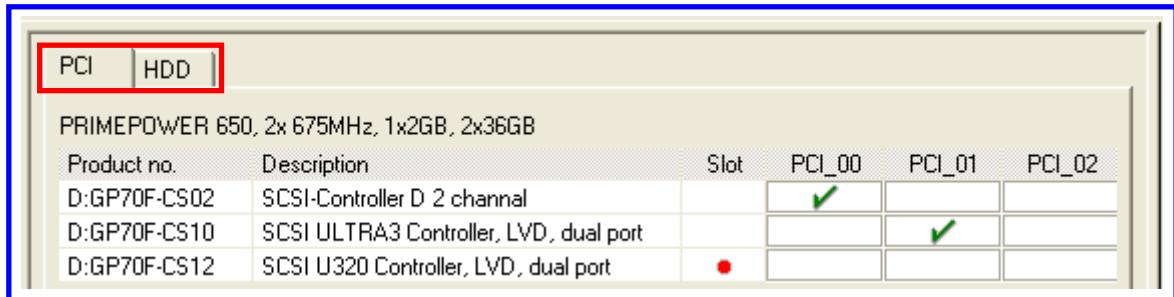
Optimized Access to centrally created solution libraries

- All centrally created and distributed solution libraries (catalogues) are displayed in 'Solutions' immediately and without any additional operation steps
- Users – who configure with a very strong product orientation – have the possibility to deactivate separate catalogues via context-function.
- Deactivated catalogues are displayed in grey. However, they are not evaluated when starting the SA, they still exist and are actualized by the automatic update. They can be updated again with the corresponding context function.



Introduction of new slot-types

- There are no more unsspecified Slot-Assignments – now clear assignments can be carried out in different classes. Those are displayed on different tabs in the slot-configuration-view.



- At the moment there are the classes 'PCI' and 'HDD' which are maintained with PRIMEPOWER-Systems. Extensions in the data base are possible at any time.
- A check within a class does not take place at the moment

Extended exports: mechanical and electric planning data, Slot-assignments, cable plan

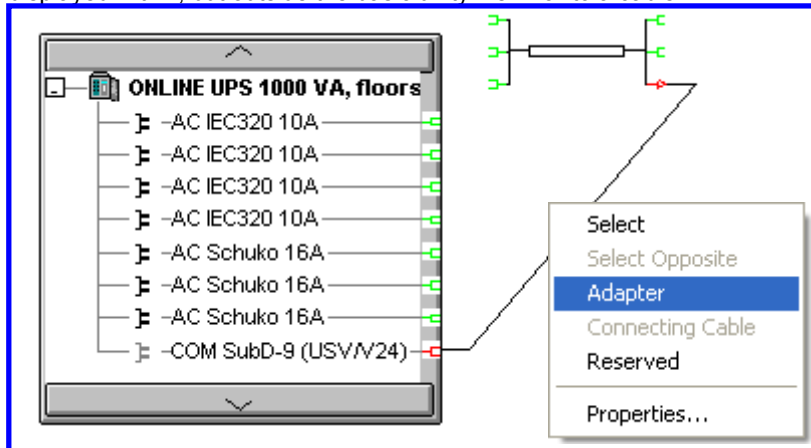
- The functional enhancements in V6.2 also have effect on the 'EXCEL-Export' and the parameterized report. New added, or modified are the tabs (or report options)
 - For the Slot-Assignment
 - For the planning data which is now also available in EXCEL. There is a distinction between mechanical and electric planning data implemented, where the electric connected load of each socket strip can be read off.
 - For the cable plan from which the exact use of all configured cables comes out.

	A	B	C	D	E	F	G	H
1	PRIMECENTER Rack 38 U, 1000 mm deep, stackable							
2								
3	Peripheral-Connections							
4	Cable			Connected Components				
5				in container component(s)				
6	Product name	Order number	Connector	Connector	Product name	Order number	Pos (in HU)	Slot
7	Keyb.-Mon.-Mouse server con. set customized	SNP-SY-F2293E500-P						
8			KVM-SubD-25	KVM-SubD-25	KVM Switch 4-port (ES4+) 1HU assembly	SNP-SY-F2293E40-P	H19	
9			VGA SubD-15	VGA SubD-15	PY RX200 W2.66/512 512M RAID-LSI	S26361-K878-V111	H30	
10			PS/2 Keyboard	PS/2 Keyboard	PY RX200 W2.66/512 512M RAID-LSI	S26361-K878-V111	H30	
11			PS/2 Mouse	PS/2 Mouse	PY RX200 W2.66/512 512M RAID-LSI	S26361-K878-V111	H30	
12								
13	Power-Supply							
14	Cable			Connected Components				
15				in container component(s)				

- Not only the price list date, but also the validity period of the price list are taken and displayed from the applied database.

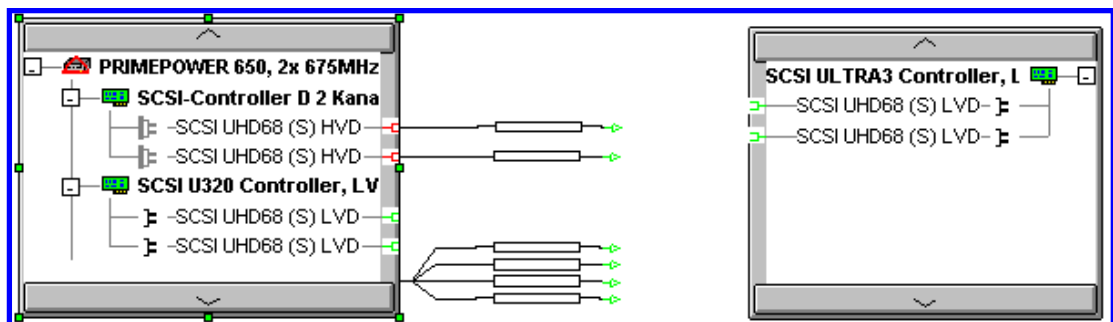
Changed Adapter Handling, introduction of adapters with several connectors

- Up to now adapters were treated as a component of a basic unity and were connected always in only one socket.
- With the new representation it is now possible to represent also adapter with several plugs. This is mandatory for the new adapters which are used with console cabling.
- Adding an adapter to a connector via context function remains unchanged. The component, however, will not be displayed within, but outside the basic unity – similar to a cable.

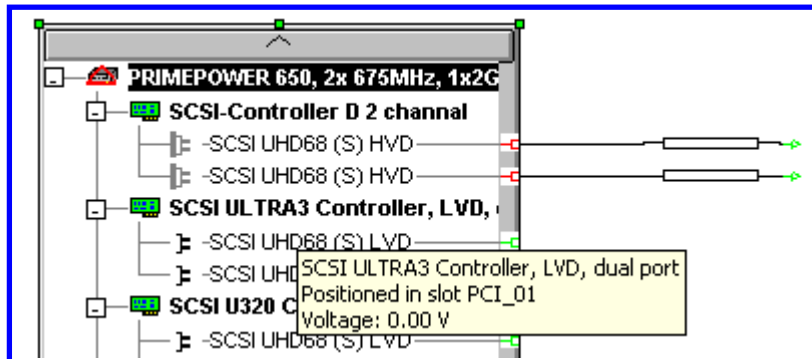


New functions in the cable view

- Due to the additionally existing power cables several functions had to be added, which facilitate working in the cable view.
 - The key F5 to refresh cable view will sort the cables – the position of the boxes and the view of the contents remain unchanged.
 - A graphic connection over 'larger distances' is now possible. After selecting a socket or a plug the user leads the mouse pointer across the grey scroll area – with pressed left mouse button – from the upper or lower margin of the box. So the user can scroll through the list of connectors. As soon as the 'target connector' can be seen in the box, the connection can be done via drag&drop.
 - Another solution for this scenario is graphic paging out of partial components. All components can be indicated as independent box via the context function "display discretely". There is no limit regarding amount or hierarchy level. The summarized view happens either by the corresponding context function "display joined on a paged out component or by Close / Reload the cable view as paging out can only be done graphically.

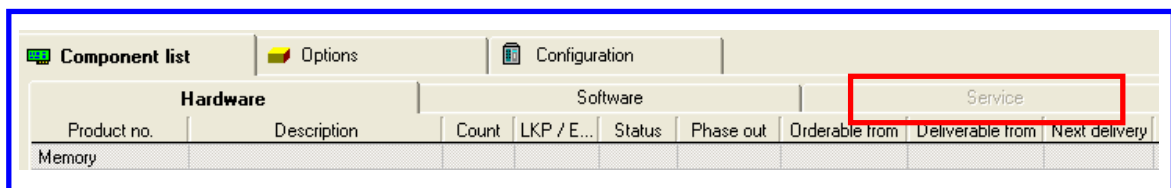


- A possibly existing slot assignment of a component is indicated on the tooltip, if the mouse pointer is led across the component.



Small changes facilitating general handling

- New info field in the system selection assistant which requests the user to select a category
- In the check dialogue the color of the text was changed for WARNINGS to underline the difference to real conflicts.
- New hotkeys to open important functions which effect only graphic selected objects.
 - ALT + ENTER Opens description dialogue
 - CTRL + R Opens substitute dialogue
 - CTRL + Q Opens configuration view
 - CTRL + W Opens rack view
 - CTRL + E Opens partitioning view
- All rack accessories from the basket and dummy panels are renamable. Thus clear definitions can be described by the user.
- In the graphic exports of the racks all names of non order-relevant rack plug-ins will be displayed in grey.
- In the configuration view for basic units the current selection of the tabs is now more clearly characterized by bold print. Empty tabs are marked grey.

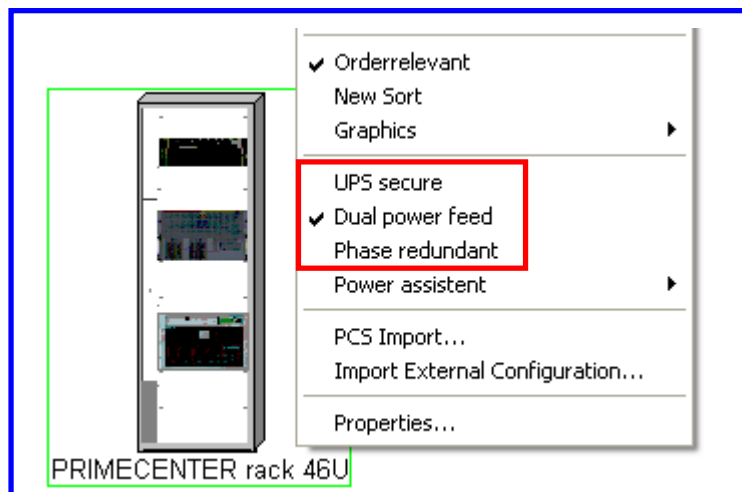


- The price representation for automatically dragged components due to a package (so-called 'Blue Components') and non order-relevant components (displayed grey) has been changed. The irrelevance in prices of these components will be shown by price '0'.

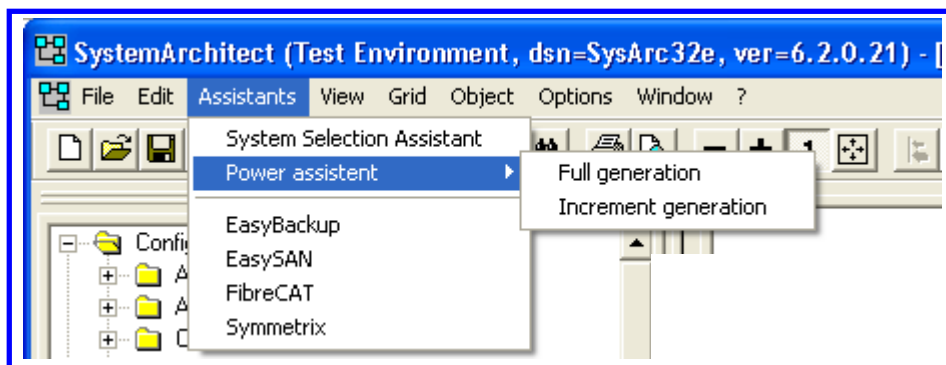
Status	Product no.	Description	Count	LKP / Euro
	S26361-K879-V135	FY TX150f P4/2.66/512 256M	1	1.400,00
	S26361-F2762-E513	Mem 256MB DDR-RAM PC2100 L...	1	0,00
	S26361-F2762-E514	Mem 512MB DDR-RAM PC2100 L...	1	0,00
	S26361-F2762-E515	Mem 1GB DDR-RAM PC2100 lp E...	1	772,00
				2.172,00

Power cabling and power cabling-assistant

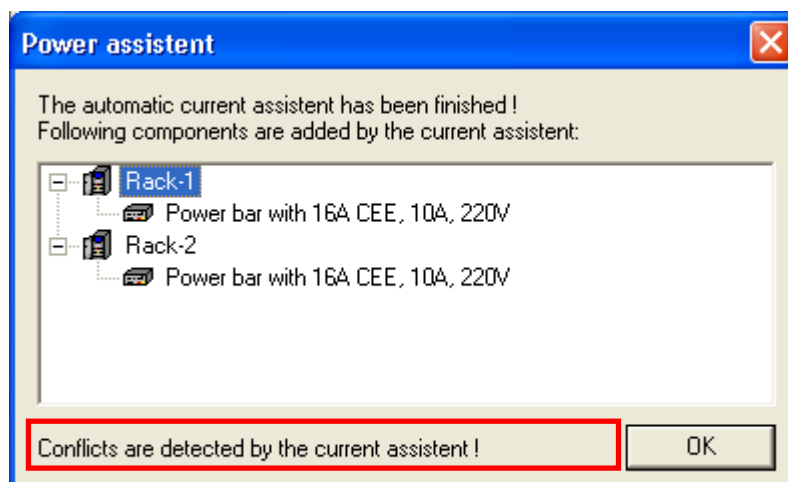
- In the data base existing connectors for all power relevant components (current consumer, UPS, multiple socket outlet) have been keyed in. Thus manual cabling for power supply would be possible within the cable view.
- In order to ensure **complete and correct** cabling some functions had to be amplified / added:
 - Testing of overcharging electric components (multiple socket outlets/UPS)
 - Marking of UPS-proofed components
 - Integration of multi-phase connections
 - Marking of the connectors which are connected to the house net of the customer
- Additionally the attributes 'Dual Power Feed' and 'Phase redundant' were implemented.
- The focus is directed first upon a rack cabling – floorstand cabling is not possible yet, but planned for later.
- To enable easy power cabling to less practiced users, the **power cabling assistant** was implemented. Following features are supported:
 - All necessary components for power cabling (power cable, multiple socket outlet, UPS) will be added automatically.
 - No change of power cabling components existing in configuration
 - Evaluation and consideration of the attributes individually adjustable for every consumer UPS secure: 'Dual Power Feed' and 'Phase redundant'
 - *New Generation*, with which all existing power connections are detached before new cabling is done. Contrary to
 - *Increment Cabling*, where existing power connections remain unchanged and only new added and not yet connected components are attached (Upgrade business).
- High value was set on simple and intuitive handling. Proceeding :
 - 1) Selection and configuration of all required systems unchanged. With PRIMERGY there is no more inquiry for possibly used UPS variants.
 - 2) Possible realisations of external cabling (SCSI, FC, etc.... power cabling not necessarily required!)
 - 3) Allocation of power attributes:
 - New added systems from system selection tree automatically get attributes adjusted in a rack
 - Changed attributes of a rack are immediately updated in all sub-components
 - Manual changing of a subcomponent's attribute is possible at any time
 - Copy / Shift of existing components with an attribute sample, which does not correspond with that of the target rack, are detected and further proceeding will be queried by user
 - Not every component is suitable for every attribute – those will be ignored. Example: User with a maximum of only one possible power supply cannot accept the attributes 'Dual-Power-Feed' or 'Phase redundancy'.
 - Initially 'Dual-Power-Feed' is activated for a new selected rack to enable ideal connection for systems.
 - The attribute sample for every component in the rack-and-cable-view is displayed as tooltip as soon as the mouse pointer is above the appropriate component, thus the user will be informed about the current adjustments without opening always the context menu.



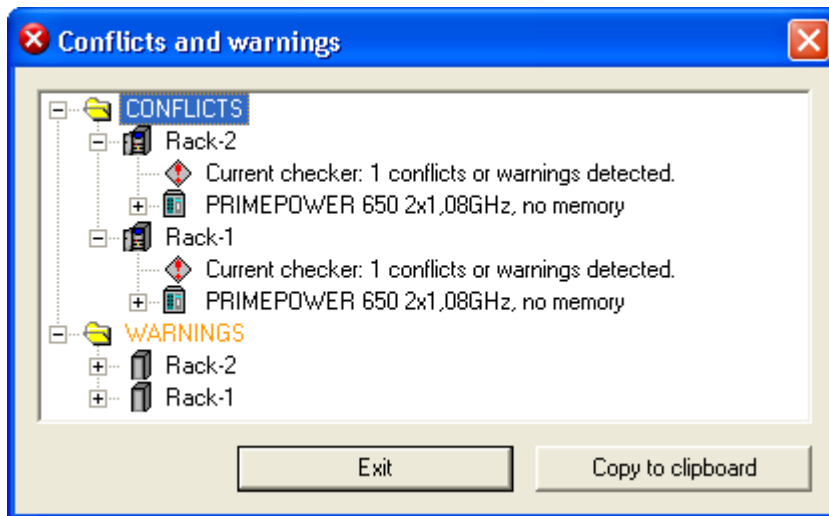
- 4) Optional changing of subcomponents within a rack regarding attributes.
- 5) **Marking of racks**, which should be included in processing the power-cabling-assistant (usually all racks)
- 6) Starting the assistant as *New Generation* via 'Assistants – power assistant' or as *Increment Generation* via the same menu or by clicking the button



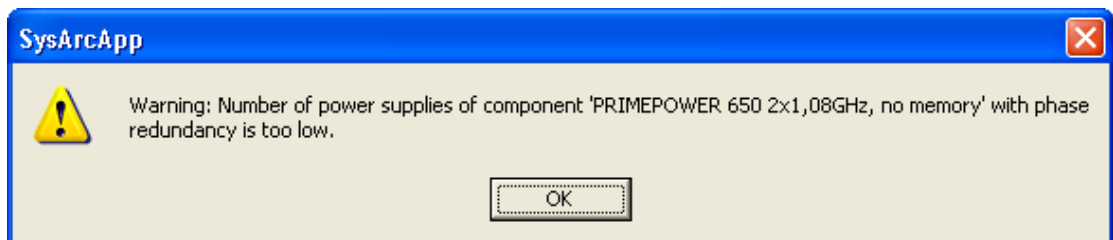
- 7) The conclusion of the assistant is marked by a reference box in which the added components are listed and eventually occurred errors are shown in the footer.



- 8) In this case the checking function has to be started



- 9) All conflicts and warnings which occur in the assistant or due to manual cabling are displayed as shown above. As the types and occurrence of errors can be very complex, they will be accumulated and then displayed (ordered by racks)
- 10) After using context function *Explain* on the conflict text a detailed error message will occur



- 11) As the following possible changes can be very complex, another automatically conflict solution is not possible at that point.
- o **Manual** change in cabling is possible **at any time**
 - o Following features in the power cabling assistant are planned for the next step:
 - Calculation / parameterisation of UPS standby time
 - Supports UPS signal cabling
 - Inquiry of customer-specific parameters before starting the assistant
 - Indication to not required components after running the assistant
 - Floorstand cabling
 - And others....

Enhancements of data

- For the system selection assistant categories and properties for STORAGE components and SPARC-based-Servers have been designed and filled with the corresponding data

For advanced information and training:

Training Offer

Training programs are offered on the topic of “Configuration Tools” and can be adapted to meet the needs of the individual participant group.

Course objectives:

- To provide a functional and performance overview
- To create simple and complex configurations
- To provide practical experience of tool handling through exercises

Target group: Technical consultants, sales employees (with and without previous knowledge of the tool) with the relevant product know-how

Language / duration: German or English / 3 hours to 2 days (depending on individual needs)

Possible topics:

- Configuration of individual systems
- Assembly of racks and rack modules
- HW partitioning for PRIMEPOWER systems
- External cabling
- Plausibility checking
- Creation and use of configuration templates
- Import and export functions

Contact: christian.buechner@fujitsu-siemens.com

3



© Fujitsu Siemens Computers 2003
All rights reserved

<p>Published by department:</p> <p>Christian Buechner FSC SMCS G</p> <p>Telefon: ++49 6172 188 6073 christian.buechner@fujitsu-siemens.com http://www.fujitsu-siemens.de/</p>	<p>Delivery subject to availability, specifications subject to change without notice, correction of errors and omissions excepted.</p> <p>All conditions quoted (TCs) are recommended cost prices in EURO excl. VAT (unless stated otherwise in the text). All hardware and software names used are brand names and/or trademarks of their respective holders.</p> <p>Copyright © Fujitsu Siemens Computers, 11/2003</p>	<p>Extranet: http://extranet.fujitsu-siemens.com/</p>	<p>Distribution:</p> <p>Intern: X Extern: X</p>
---	--	---	--